

V&V Reference Report

L2 ASCDS Version : 7.6.7.1

Observation 59923 - L2 Version 002
Chandra X-Ray Center

L2 Processing Date : Apr 8 2006

Contents

1	Front	2
2	OBI	3
2.1	OBI	3
2.1.1	Images	3
2.1.2	Bias	3
2.1.3	Parameters	4
2.1.4	Events	4
2.2	Compared Parameters	5
2.3	Aspect	6
2.4	Star Slots	8
2.5	FID Slots	8
A	Summary	9
A.1	Status	9
A.2	Comments	9

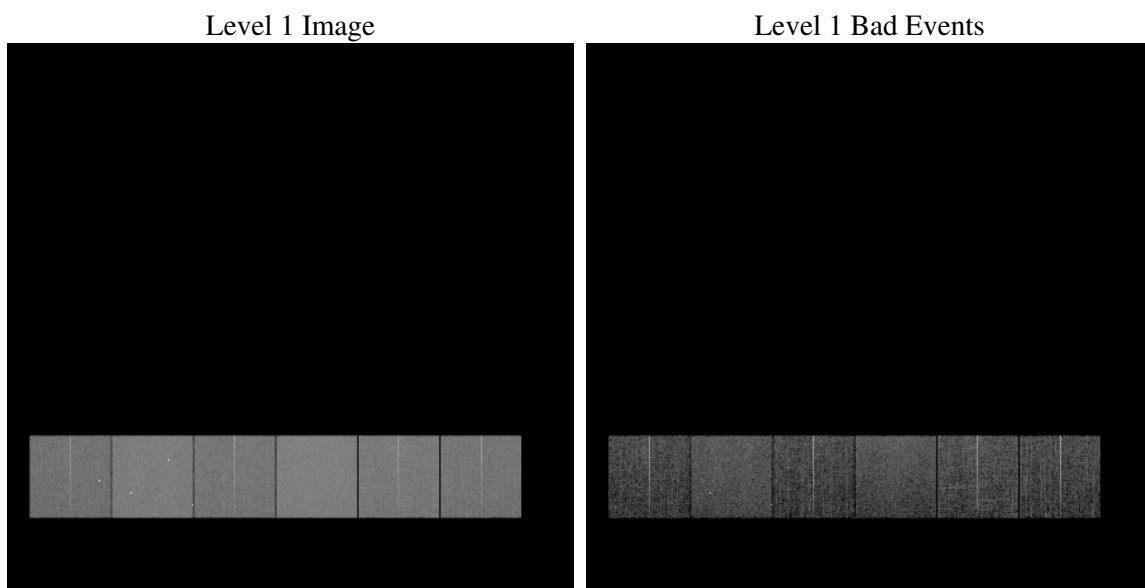
1 Front

seq_num	
obs_id	59923
title	ACIS-456789 diagnostics
observer	CHANDRA engineering request/realtime commanding
object	
dtcycle	0
cycle	P
ra_targ	0.0
dec_targ	0.0
ra_nom	112.7694661208
dec_nom	42.11413087433
roll_nom	115.54497163399
revision	2
ontime	7800.9814693928
livetime	7702.2007448402
ontime4	5746.3192485571
ontime5	7801.0225093961
ontime6	6167.614495188
ontime7	7800.9814693928
ontime8	6388.0312050283
ontime9	6021.6471740007
l2events	1037864

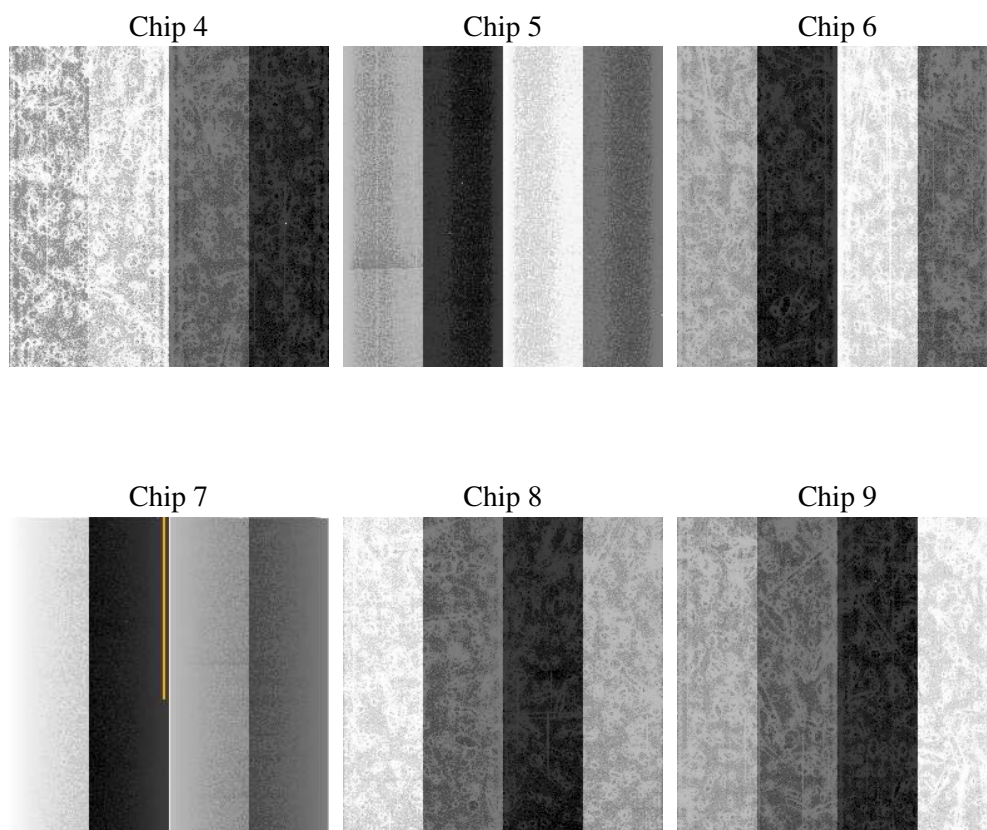
2 OBI

2.1 OBI

2.1.1 Images



2.1.2 Bias



2.1.3 Parameters

obi_num	0
ascdsver	7.6.7.1
caldsver	3.2.1
date	2006-04-09T01:07:57
revision	2

sched_exp_time	0.0
ontime	7801.0942409337
ontime4	5746.3192485571
ontime5	7801.0942409337
ontime6	6167.6451867223
ontime7	7801.0942409337
ontime8	6388.0312050283
ontime9	6021.8009855449
l1events	1411349

2.1.4 Events

	ccd 4	ccd 5	ccd 6	ccd 7	ccd 8	ccd 9
level 1 events	196107	268469	218873	280755	237934	209211
rejected events	44566	62991	45329	55450	53615	46090
rejected %	22%	23%	20%	19%	22%	22%

	ccd 4	ccd 5	ccd 6	ccd 7	ccd 8	ccd 9
grade 0 events	88085	22778	93834	39705	99893	90023
	44%	8%	42%	14%	41%	43%
grade 1 events	712	200	503	123	556	574
	0%	0%	0%	0%	0%	0%
grade 2 events	23951	96080	30226	66971	32608	27825
	12%	35%	13%	23%	13%	13%
grade 3 events	10094	6285	10846	16377	12160	10391
	5%	2%	4%	5%	5%	4%
grade 4 events	10023	6102	10763	16276	11908	10473
	5%	2%	4%	5%	5%	5%
grade 5 events	2599	6774	2980	6736	3719	3146
	1%	2%	1%	2%	1%	1%
grade 6 events	19388	74233	27875	85976	27750	24409
	9%	27%	12%	30%	11%	11%
grade 7 events	41255	56017	41846	48591	49340	42370
	21%	20%	19%	17%	20%	20%

2.2 Compared Parameters

Parameter	Planned	Actual	Parameter	Planned	Actual
Instrument	ACIS	ACIS	Obspar format version number	6	6
Detector	ACIS-456789	ACIS-456789	Obspar file type	PREDICTED	ACTUAL
Grating	NONE	NONE	Obspar update status	NONE	UPDATED
Data mode	FAINT	FAINT	On-chip summing requested	N	N
Observation mode	SECONDARY	SECONDARY	Subarray requested	NONE	NONE
Pointing RA	0	112.7694661208006	Alternating exposures requested	N	N
Pointing Dec	0	42.11413087433034	Primary exposure time	3.2	3.2
Pointing Roll	0.0	115.5449716339883			
SIM focus pos (mm)	-0.684267	-0.6828225247311905			
SIM defocus (mm)	0	0.8505141146731063			
SIM translation stage pos (mm)	-190.132523	250.466033080201			
SIM translation stage offset (mm)	0	-0.01005468664627074			
Observation start time	219317870.114614	219317869.08962			
Observation start date	2004-12-13T09:37:50	2004-12-13T09:37:49			
Observation end time	219366906.116818	219366905.09183			
Observation end date	2004-12-13T23:15:06	2004-12-13T23:15:05			
Read mode	TIMED	TIMED			

2.3 Aspect

2.4 Star Slots

2.5 FID Slots

A Summary

A.1 Status

V&V Scientist	Jen Lauer
V&V Date (YYYY-MM-DD)	2006.04.10
V&V Edition	1
V&V Disposition and Status	OK
V&V Charge Time	7.80098146

A.2 Comments