

V&V Reference Report

L2 ASCDS Version : 7.6.7.1

Observation 59892 - L2 Version 002
Chandra X-Ray Center

L2 Processing Date : Apr 7 2006

Contents

1	Front	2
2	OBI	3
2.1	OBI	3
2.1.1	Images	3
2.1.2	Bias	3
2.1.3	Parameters	4
2.1.4	Events	4
2.2	Compared Parameters	5
2.3	Aspect	6
2.4	Star Slots	8
2.5	FID Slots	8
A	Summary	9
A.1	Status	9
A.2	Comments	9

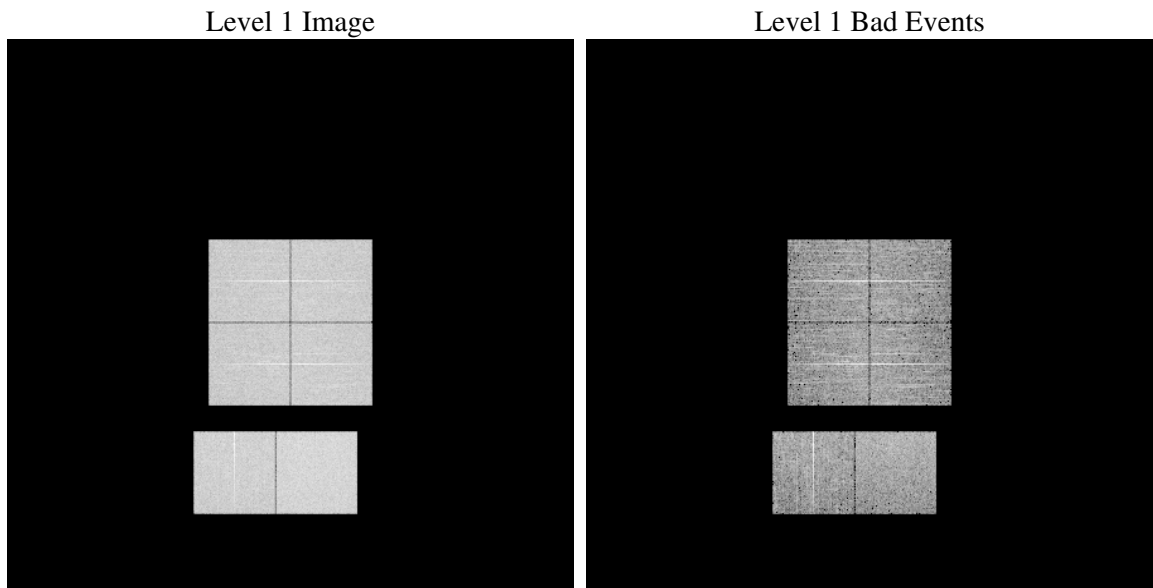
1 Front

seq_num	
obs_id	59892
title	ACIS-012367 diagnostics
observer	CHANDRA engineering request/realtime commanding
object	
dtcycle	0
cycle	P
ra_targ	0.0
dec_targ	0.0
ra_nom	96.123793066288
dec_nom	11.116527443502
roll_nom	2.3996423912261
revision	2
ontime	4953.2539274096
livetime	4890.5328436893
ontime0	4191.667989403
ontime1	4324.588601321
ontime2	4081.5574484169
ontime3	4207.7909601033
ontime6	4444.5867006183
ontime7	4953.2539274096
l2events	673295

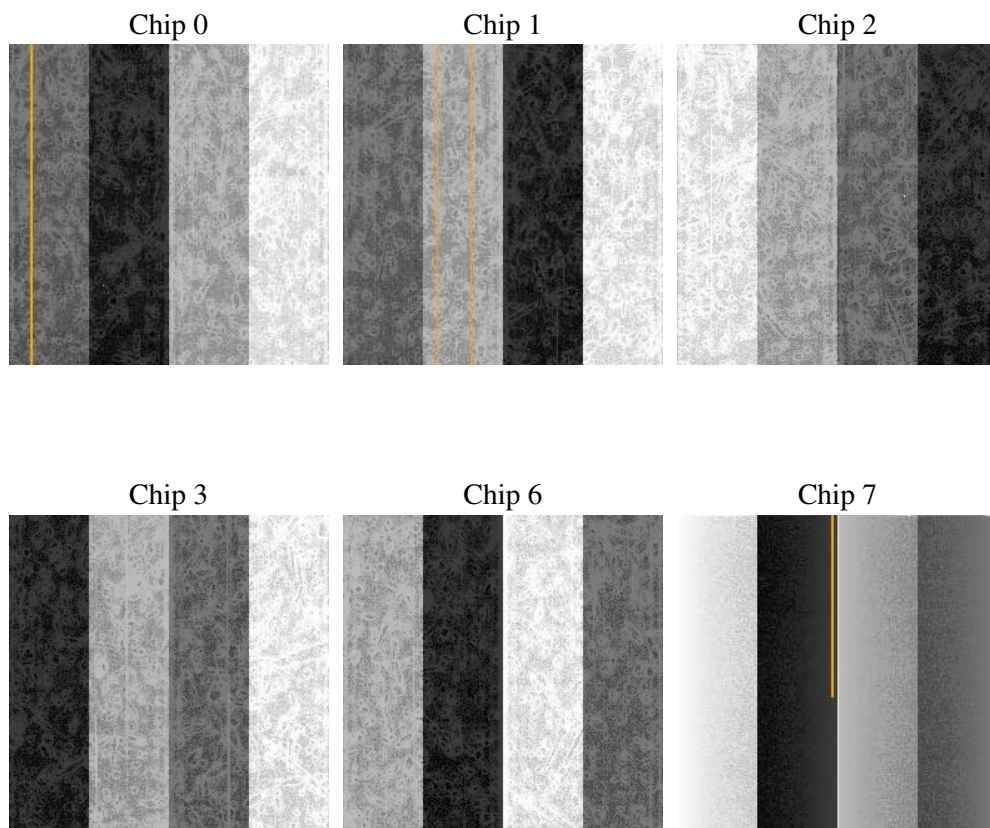
2 OBI

2.1 OBI

2.1.1 Images



2.1.2 Bias



2.1.3 Parameters

obi_num	0
ascdsver	7.6.7.1
caldbver	3.2.1
date	2006-04-07T20:45:34
revision	2

sched_exp_time	0.0
ontime	5033.2750966251
ontime0	4271.6481186152
ontime1	4404.5276905298
ontime2	4161.4554976225
ontime3	4287.853169322
ontime6	4524.4437098503
ontime7	5033.2750966251
l1events	919167

2.1.4 Events

	ccd 0	ccd 1	ccd 2	ccd 3	ccd 6	ccd 7
level 1 events	144389	146940	141549	147101	158972	180216
rejected events	34031	33241	33960	34865	36398	39518
rejected %	23%	22%	23%	23%	22%	21%

	ccd 0	ccd 1	ccd 2	ccd 3	ccd 6	ccd 7
grade 0 events	61845	63434	61571	64207	67872	24673
	42%	43%	43%	43%	42%	13%
grade 1 events	369	307	416	399	342	69
	0%	0%	0%	0%	0%	0%
grade 2 events	19789	20617	18582	19495	21591	42725
	13%	14%	13%	13%	13%	23%
grade 3 events	7155	7423	7094	7584	7932	10244
	4%	5%	5%	5%	4%	5%
grade 4 events	7436	7463	7228	7493	7621	10166
	5%	5%	5%	5%	4%	5%
grade 5 events	1867	2014	1752	2080	2196	4450
	1%	1%	1%	1%	1%	2%
grade 6 events	16195	16921	15267	15489	19745	55148
	11%	11%	10%	10%	12%	30%
grade 7 events	29733	28761	29639	30354	31673	32741
	20%	19%	20%	20%	19%	18%

2.2 Compared Parameters

Parameter	Planned	Actual	Parameter	Planned	Actual
Instrument	ACIS	ACIS	Obspar format version number	6	6
Detector	ACIS-012367	ACIS-012367	Obspar file type	PREDICTED	ACTUAL
Grating	NONE	NONE	Obspar update status	NONE	UPDATED
Data mode	FAINT	FAINT	On-chip summing requested	N	N
Observation mode	SECONDARY	SECONDARY	Subarray requested	NONE	NONE
Pointing RA	0	96.12379306628827	Alternating exposures requested	N	N
Pointing Dec	0	11.11652744350196	Primary exposure time	3.2	3.2
Pointing Roll	0.0	2.399642391226119			
SIM focus pos (mm)	-0.782348	-0.6828225247311905			
SIM defocus (mm)	0	0.8505141146731063			
SIM translation stage pos (mm)	-233.592463	250.466033080201			
SIM translation stage offset (mm)	0	-0.01005468664627074			
Observation start time	220458939.116024	220458938.09101			
Observation start date	2004-12-26T14:35:39	2004-12-26T14:35:38			
Observation end time	220494920.717647	220494919.69263			
Observation end date	2004-12-27T00:35:21	2004-12-27T00:35:19			
Read mode	TIMED	TIMED			

2.3 Aspect

2.4 Star Slots

2.5 FID Slots

A Summary

A.1 Status

V&V Scientist	Jen Lauer
V&V Date (YYYY-MM-DD)	2006.04.10
V&V Edition	1
V&V Disposition and Status	OK
V&V Charge Time	4.95325392

A.2 Comments