

# V&V Reference Report

## L2 ASCDS Version : 7.6.7.1

Observation 59888 - L2 Version 002  
Chandra X-Ray Center

L2 Processing Date : Apr 7 2006

## Contents

<b>1</b>	<b>Front</b>	<b>2</b>
<b>2</b>	<b>OBI</b>	<b>3</b>
2.1	OBI . . . . .	3
2.1.1	Images . . . . .	3
2.1.2	Bias . . . . .	3
2.1.3	Parameters . . . . .	4
2.1.4	Events . . . . .	4
2.2	Compared Parameters . . . . .	5
2.3	Aspect . . . . .	6
2.4	Star Slots . . . . .	8
2.5	FID Slots . . . . .	8
<b>A</b>	<b>Summary</b>	<b>9</b>
A.1	Status . . . . .	9
A.2	Comments . . . . .	9

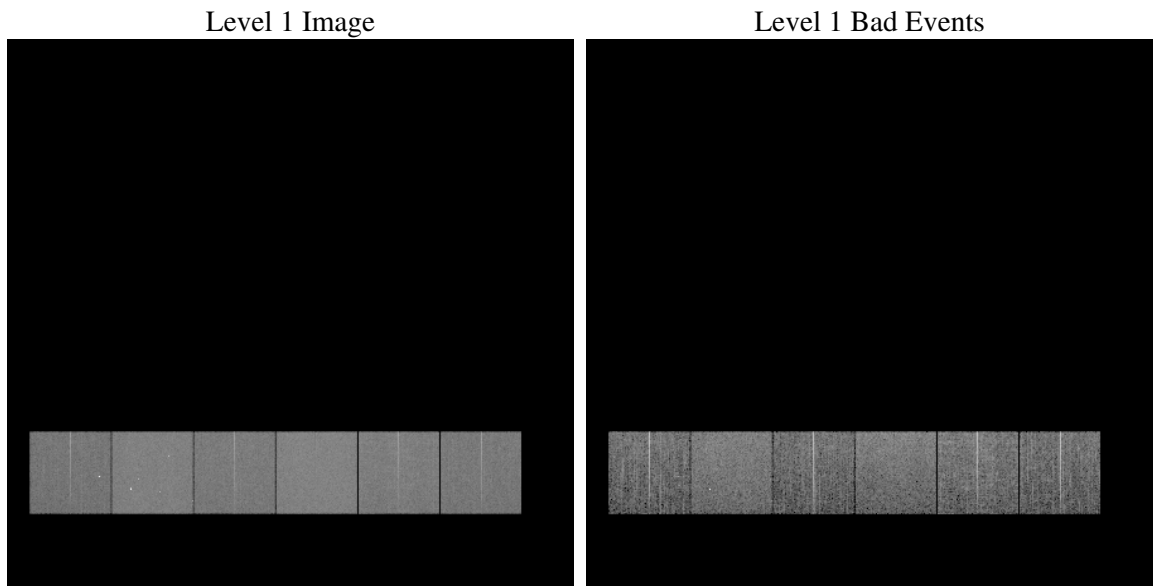
# 1 Front

seq_num	&#160
obs_id	59888
title	ACIS-456789 diagnostics
observer	CHANDRA engineering request/realtime commanding
object	&#160
dtcycle	0
cycle	P
ra_targ	0.0
dec_targ	0.0
ra_nom	105.96509290934
dec_nom	34.999026023758
roll_nom	149.12000291683
revision	2
ontime	7800.2000020742
livetime	7701.4291729314
ontime4	5771.4754644036
ontime5	7800.2410420775
ontime6	6422.8711056709
ontime7	7800.2000020742
ontime8	6552.5908907056
ontime9	6221.8068713844
l2events	1036321

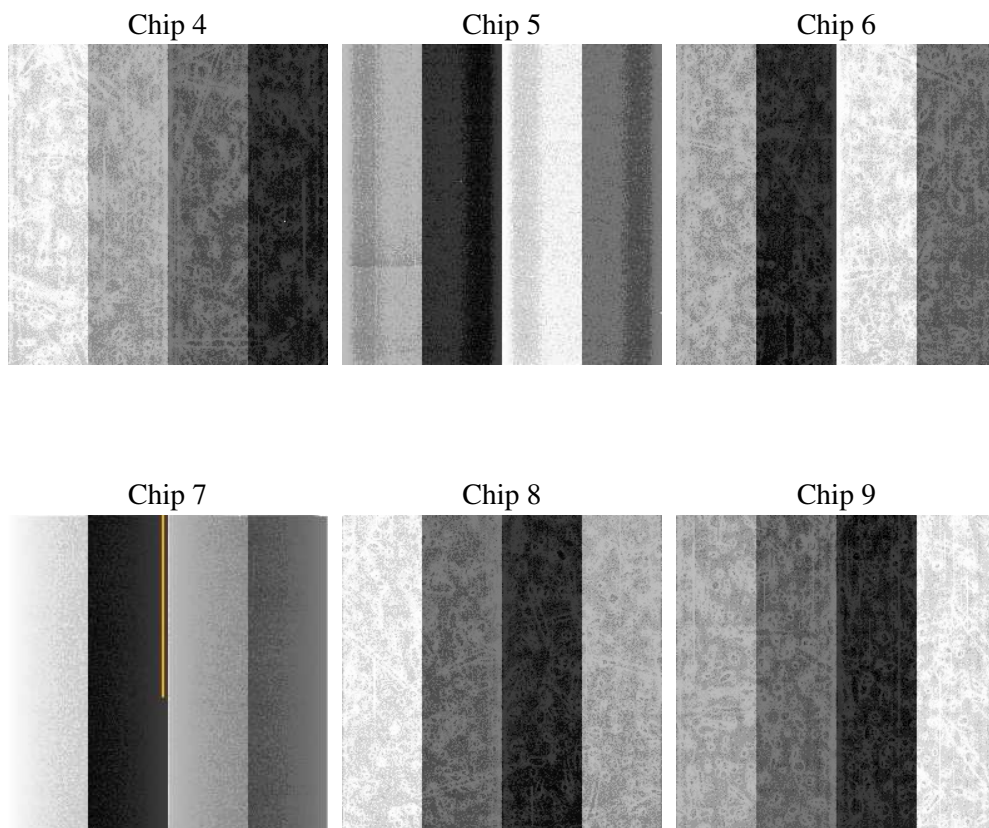
## 2 OBI

### 2.1 OBI

#### 2.1.1 Images



#### 2.1.2 Bias



### 2.1.3 Parameters

obi_num	0
ascdsver	7.6.7.1
caldbver	3.2.1
date	2006-04-07T21:02:59
revision	2

sched_exp_time	0.0
ontime	7801.094501406
ontime4	5772.2468437254
ontime5	7801.094501406
ontime6	6423.683524996
ontime7	7801.094501406
ontime8	6553.3212300539
ontime9	6222.7424107194
l1events	1409950

### 2.1.4 Events

	ccd 4	ccd 5	ccd 6	ccd 7	ccd 8	ccd 9
level 1 events	196341	261079	223705	275721	240954	212150
rejected events	47077	58881	46130	54941	54081	46574
rejected %	23%	22%	20%	19%	22%	21%

	ccd 4	ccd 5	ccd 6	ccd 7	ccd 8	ccd 9
grade 0 events	87005	24415	96515	38585	101370	90764
	44%	9%	43%	13%	42%	42%
grade 1 events	666	267	464	99	544	515
	0%	0%	0%	0%	0%	0%
grade 2 events	23738	93375	30852	65859	32603	28405
	12%	35%	13%	23%	13%	13%
grade 3 events	9874	6845	11008	16111	12498	10718
	5%	2%	4%	5%	5%	5%
grade 4 events	9858	6572	11187	15890	12370	10632
	5%	2%	5%	5%	5%	5%
grade 5 events	2717	6037	3158	6700	3791	3228
	1%	2%	1%	2%	1%	1%
grade 6 events	18789	70991	28013	84335	28032	25057
	9%	27%	12%	30%	11%	11%
grade 7 events	43694	52577	42508	48142	49746	42831
	22%	20%	19%	17%	20%	20%

## 2.2 Compared Parameters

Parameter	Planned	Actual	Parameter	Planned	Actual
Instrument	ACIS	ACIS	Obspar format version number	6	6
Detector	ACIS-456789	ACIS-456789	Obspar file type	PREDICTED	ACTUAL
Grating	NONE	NONE	Obspar update status	NONE	UPDATED
Data mode	FAINT	FAINT	On-chip summing requested	N	N
Observation mode	SECONDARY	SECONDARY	Subarray requested	NONE	NONE
Pointing RA	0	105.9650929093445	Alternating exposures requested	N	N
Pointing Dec	0	34.99902602375776	Primary exposure time	3.2	3.2
Pointing Roll	0.0	149.1200029168311			
SIM focus pos (mm)	-0.684267	-0.6828225247311905			
SIM defocus (mm)	0	0.8505141146731063			
SIM translation stage pos (mm)	-190.132523	250.466033080201			
SIM translation stage offset (mm)	0	-0.01005468664627074			
Observation start time	220688768.726371	220688767.70137			
Observation start date	2004-12-29T06:26:09	2004-12-29T06:26:07			
Observation end time	220703092.077017	220703091.05201			
Observation end date	2004-12-29T10:24:52	2004-12-29T10:24:51			
Read mode	TIMED	TIMED			

## 2.3 Aspect



## **2.4 Star Slots**

## **2.5 FID Slots**



## A Summary

### A.1 Status

V&V Scientist	Jen Lauer
V&V Date (YYYY-MM-DD)	2006.04.10
V&V Edition	1
V&V Disposition and Status	OK
V&V Charge Time	7.8002

### A.2 Comments