

V&V Reference Report

L2 ASCDS Version : 8.4.5

Observation 62847 - L2 Version 4
Chandra X-Ray Center

L2 Processing Date : Oct 29 2012

Contents

1	Front	2
2	OBI	3
2.1	OBI	3
2.1.1	Images	3
2.1.2	Bias	3
2.1.3	Parameters	4
2.1.4	Events	4
2.2	Compared Parameters	5
2.3	Star Slots	6
2.4	FID Slots	6
A	Summary	7
A.1	Status	7
A.2	Comments	7

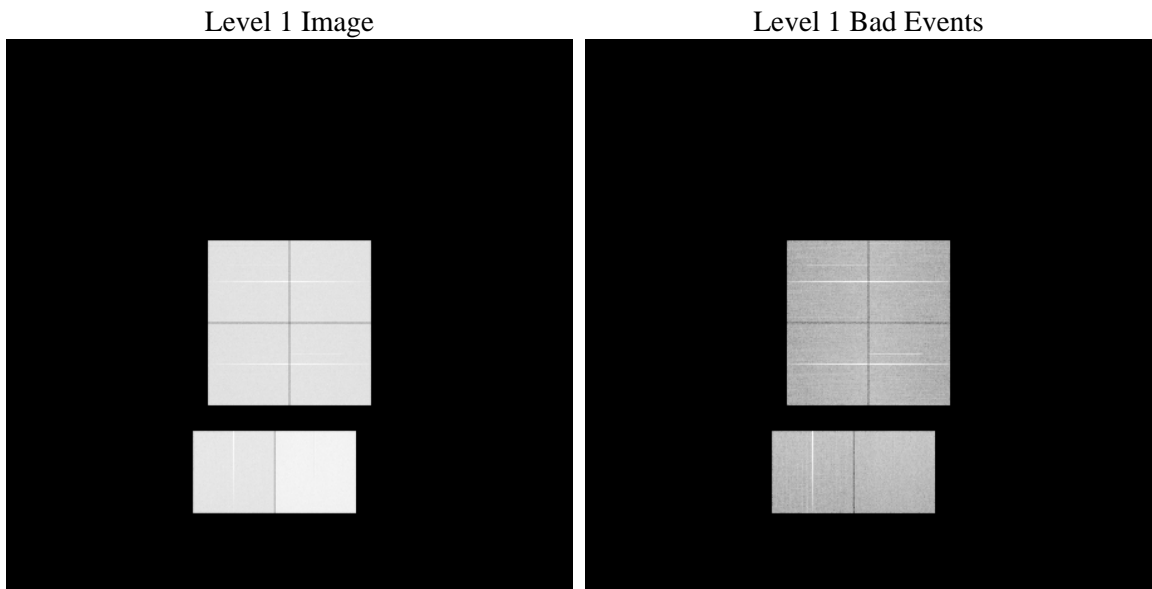
1 Front

seq_num	 	Sequence number
obs_id	62847	Observation id
title	ACIS-012367 diagnostics	Proposal title
observer	CHANDRA engineering request/realtime commanding	Principal investig
object	 	Source name
dtcycle	0	
cycle	P	events from which exps? Prim/Second/Both
ra_targ	0.0	Observer's specified target RA [deg]
dec_targ	0.0	Observer's specified target Dec [deg]
ra_nom	97.880833391516	Nominal RA [deg]
dec_nom	-20.604994360407	Nominal Dec [deg]
roll_nom	209.87111499722	Nominal Roll [deg]
revision	4	Processing version of data
ontime	50284.369801015	Sum of GTIs [s]
livetime	49647.638832982	Livetime [s]
ontime0	28472.398121864	Sum of GTIs [s]
ontime1	29237.270496428	Sum of GTIs [s]
ontime2	27415.83826381	Sum of GTIs [s]
ontime3	28375.170617789	Sum of GTIs [s]
ontime6	31110.666156858	Sum of GTIs [s]
ontime7	50284.369801015	Sum of GTIs [s]
l2events	7414502	Number of level 2 events

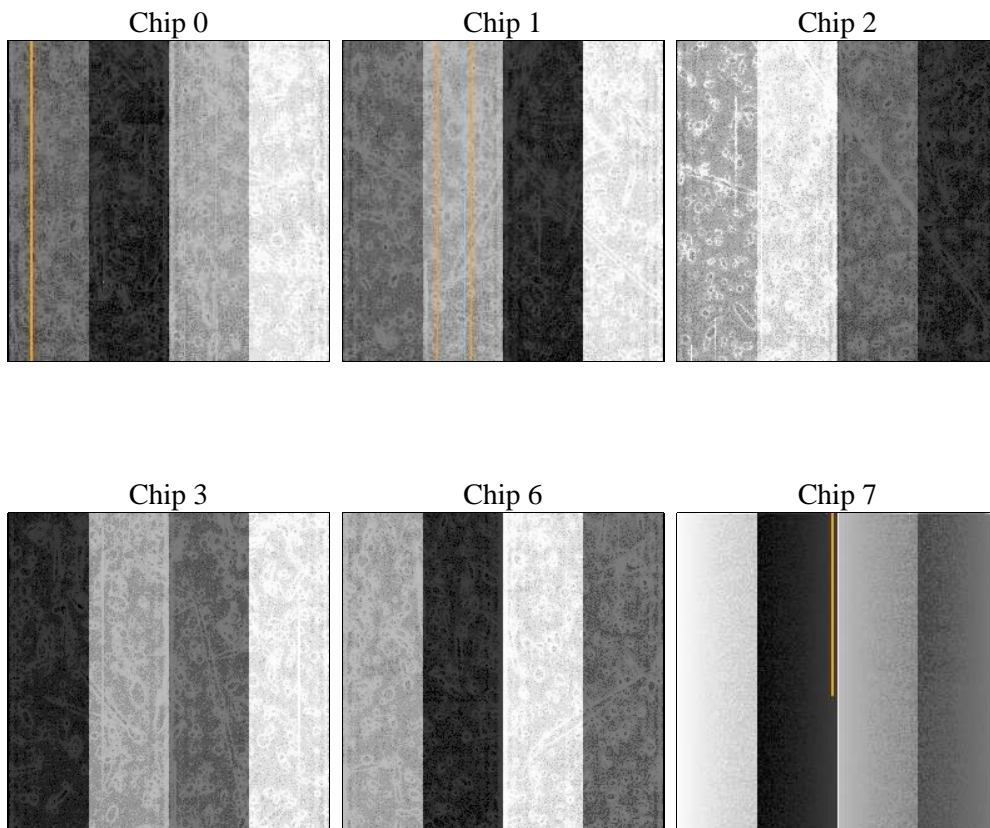
2 OBI

2.1 OBI

2.1.1 Images



2.1.2 Bias



2.1.3 Parameters

obi_num	0	Obi number	sched_exp_time	0.0	[s] Scheduled observation exposure time
ascdsver	8.4.5	Processing system revision	ontime	50284.369801015	Sum of GTIs [s]
caldsver	4.5.2	 	ontime0	28472.398121864	Sum of GTIs [s]
date	2012-10-29T07:25:32	Date and time of file creation	ontime1	29237.270496428	Sum of GTIs [s]
revision	4	Processing version of data	ontime2	27415.83826381	Sum of GTIs [s]
			ontime3	28375.170617789	Sum of GTIs [s]
			ontime6	31110.666156858	Sum of GTIs [s]
			ontime7	50284.369801015	Sum of GTIs [s]
			l1events	9028874	Number of level 1 events

2.1.4 Events

	ccd 0	ccd 1	ccd 2	ccd 3	ccd 6	ccd 7		ccd 0	ccd 1	ccd 2	ccd 3	ccd 6	ccd 7
level 1 events	1296824	1335263	1276459	1321972	1491841	2306515	grade 0 events	608664	625566	602211	626851	688599	514093
rejected events	195209	199185	202301	209017	227136	238856		46%	46%	47%	47%	46%	22%
rejected %	15%	14%	15%	15%	15%	10%	grade 1 events	3512	3223	3935	3876	3584	1445
								0%	0%	0%	0%	0%	0%
							grade 2 events	191538	200994	181050	189968	217554	457689
								14%	15%	14%	14%	14%	19%
							grade 3 events	71284	72293	70038	72482	78501	209518
								5%	5%	5%	5%	5%	9%
							grade 4 events	71275	72429	70451	72298	78349	207936
								5%	5%	5%	5%	5%	9%
							grade 5 events	11712	12128	11247	12453	13903	45695
								0%	0%	0%	0%	0%	1%
							grade 6 events	160172	166542	151801	152976	203532	681151
								12%	12%	11%	11%	13%	29%
							grade 7 events	178667	182088	185726	191068	207819	188988
								13%	13%	14%	14%	13%	8%

2.2 Compared Parameters

Parameter	Planned	Actual	Parameter	Planned	Actual
Instrument	ACIS	ACIS	Obspar format version number	7	7
Detector	ACIS-012367	ACIS-012367	Obspar file type	PREDICTED	ACTUAL
Grating	NONE	NONE	Obspar update status	OVERRIDE	OVERRIDE
Data mode	FAINT	FAINT	Number of optional ACIS chips dropped	0	0
Observation mode	SECONDARY	SECONDARY	On-chip summing requested	N	N
[deg] Pointing RA	97.8831088918477	97.88083339151574	Subarray requested	NONE	NONE
[deg] Pointing Dec	-20.60419280548223	-20.60499436040689	Alternating exposures requested	N	N
[deg] Pointing Roll	209.8732210733343	209.8711149972164	[s] Primary exposure time	3.2	3.2
[mm] SIM focus pos	-0.782348	-0.782348			
[mm] SIM defocus	0.7509885631557434	0.7509885631557434			
[mm] SIM translation stage pos	0	0			
[mm] SIM translation stage offset	250.4559758189947	250.4559758189947			
[s] Observation start time (MET)	170721226.0376	170721226.0376			
Observation start date	2003-05-30T22:33:46	2003-05-30T22:33:46			
[s] Observation end time (MET)	170773263.362108	170773263.362108			
Observation end date	2003-05-31T13:01:03	2003-05-31T13:01:03			
Read mode	TIMED	TIMED			

2.3 Star Slots

2.4 FID Slots

A Summary

A.1 Status

V&V Scientist	Jen Lauer
V&V Date (YYYY-MM-DD)	2012.12.06
V&V Edition	1
V&V Disposition and Status	OK
V&V Charge Time	50.284369801015

A.2 Comments