

# V&V Reference Report

## L2 ASCDS Version : 7.6.9

Observation 60898 - L2 Version 002  
Chandra X-Ray Center

L2 Processing Date : Nov 17 2006

## Contents

<b>1</b>	<b>Front</b>	<b>2</b>
<b>2</b>	<b>OBI</b>	<b>3</b>
2.1	OBI . . . . .	3
2.1.1	Images . . . . .	3
2.1.2	Bias . . . . .	3
2.1.3	Parameters . . . . .	4
2.1.4	Events . . . . .	4
2.2	Compared Parameters . . . . .	5
2.3	Aspect . . . . .	6
2.4	Star Slots . . . . .	8
2.5	FID Slots . . . . .	8
<b>A</b>	<b>Summary</b>	<b>9</b>
A.1	Status . . . . .	9
A.2	Comments . . . . .	9

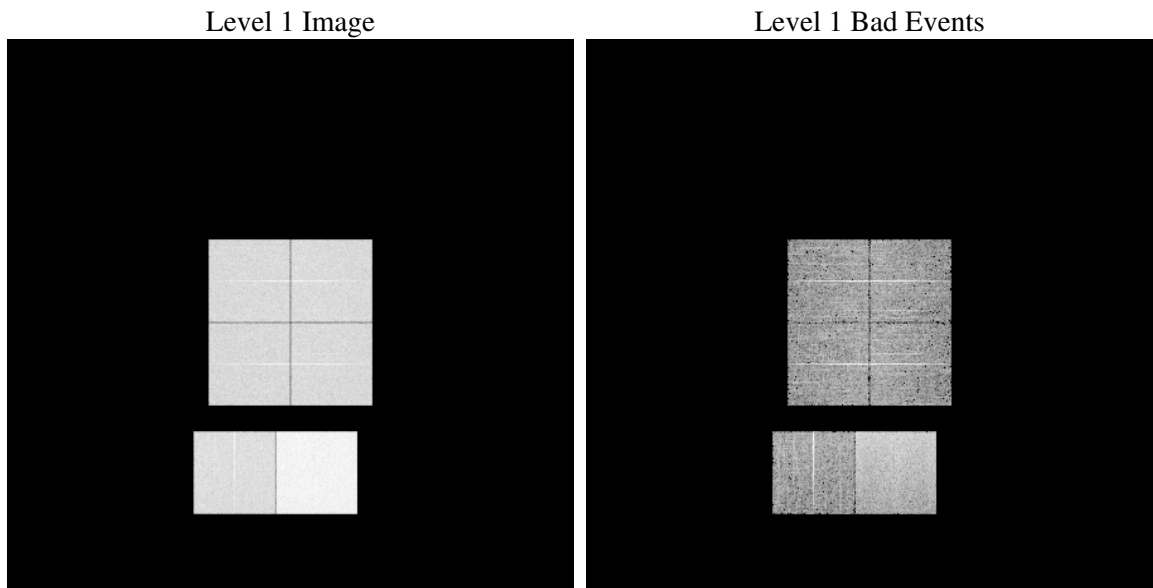
# 1 Front

seq_num	&#160
obs_id	60898
title	ACIS-012367 diagnostics
observer	CHANDRA engineering request/realtime commanding
object	&#160
dtcycle	0
cycle	P
ra_targ	0.0
dec_targ	0.0
ra_nom	121.87586360077
dec_nom	28.919273325275
roll_nom	104.71311869688
revision	4
ontime	8325.3347719014
livetime	8219.9143701048
ontime0	4368.1021847427
ontime1	4449.1276468933
ontime2	4144.1788079739
ontime3	4293.5593110323
ontime6	4640.3451805711
ontime7	8325.3347719014
l2events	1253647

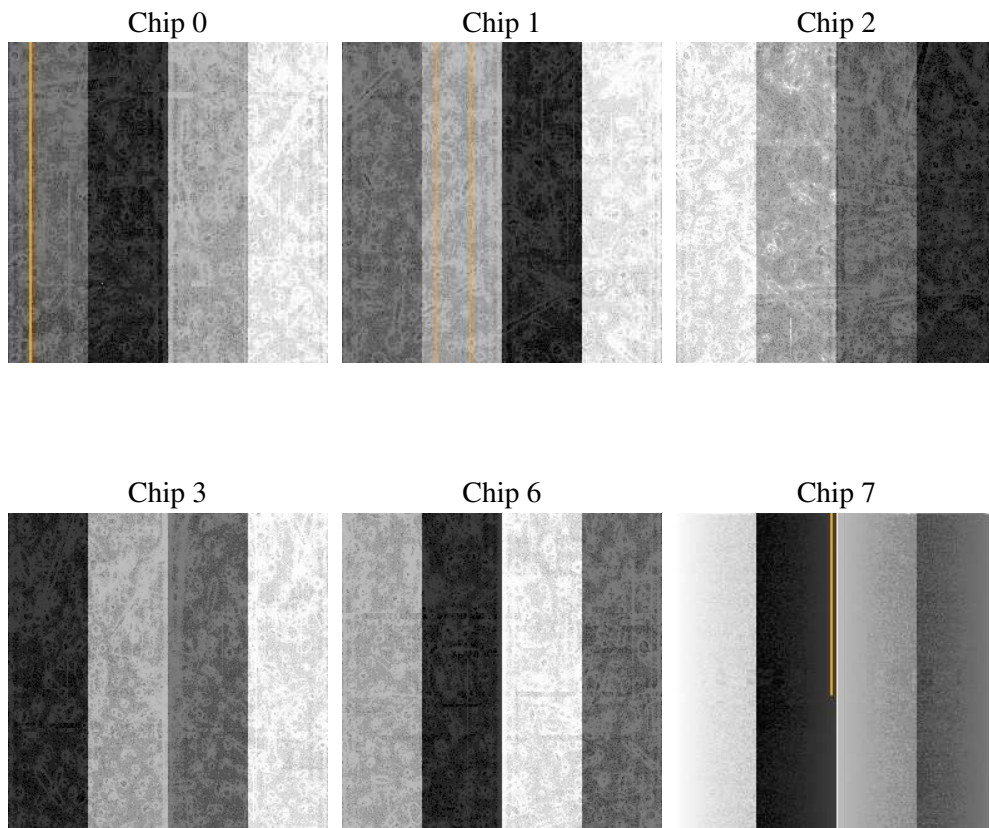
## 2 OBI

### 2.1 OBI

#### 2.1.1 Images



#### 2.1.2 Bias



### 2.1.3 Parameters

obi_num	1
ascdsver	7.6.9
caldbver	3.2.4
date	2006-11-17T16:34:00
revision	4

sched_exp_time	0.0
ontime	8381.2367168963
ontime0	4394.8352777362
ontime1	4475.8607897162
ontime2	4167.9649587572
ontime3	4323.5334439874
ontime6	4670.3193633556
ontime7	8381.2367168963
l1events	1537116

### 2.1.4 Events

	ccd 0	ccd 1	ccd 2	ccd 3	ccd 6	ccd 7
level 1 events	218516	222165	212044	218906	242038	423447
rejected events	31792	31354	33004	32632	33832	63874
rejected %	14%	14%	15%	14%	13%	15%

	ccd 0	ccd 1	ccd 2	ccd 3	ccd 6	ccd 7
grade 0 events	104440	105954	102324	106147	115200	63635
	47%	47%	48%	48%	47%	15%
grade 1 events	548	518	637	639	504	155
	0%	0%	0%	0%	0%	0%
grade 2 events	33020	34181	30648	31930	36112	111364
	15%	15%	14%	14%	14%	26%
grade 3 events	12377	12093	11841	12382	13144	26305
	5%	5%	5%	5%	5%	6%
grade 4 events	12073	12009	11782	12357	12979	25648
	5%	5%	5%	5%	5%	6%
grade 5 events	2055	2080	1969	2053	2331	7622
	0%	0%	0%	0%	0%	1%
grade 6 events	27417	28278	25559	25608	32906	136374
	12%	12%	12%	11%	13%	32%
grade 7 events	26586	27052	27284	27790	28862	52344
	12%	12%	12%	12%	11%	12%

## 2.2 Compared Parameters

Parameter	Planned	Actual	Parameter	Planned	Actual
Instrument	ACIS	ACIS	Obspar format version number	6	6
Detector	ACIS-012367	ACIS-012367	Obspar file type	PREDICTED	ACTUAL
Grating	NONE	NONE	Obspar update status	NONE	UPDATED
Data mode	FAINT	FAINT	On-chip summing requested	N	N
Observation mode	SECONDARY	SECONDARY	Subarray requested	NONE	NONE
Pointing RA	0	121.8758636007696	Alternating exposures requested	N	N
Pointing Dec	0	28.9192733252753	Primary exposure time	0.000000	3.2
Pointing Roll	0.0	104.7131186968762			
SIM focus pos (mm)	-0.782348	-0.6828225247311905			
SIM defocus (mm)	0	0.8505141146731063			
SIM translation stage pos (mm)	-233.592463	250.466033080201			
SIM translation stage offset (mm)	0	-0.01005468664627074			
Observation start time	157895357.447392	157895356.42267			
Observation start date	2003-01-02T11:49:17	2003-01-02T11:49:16			
Observation end time	157917538.448319	157917537.4236			
Observation end date	2003-01-02T17:58:58	2003-01-02T17:58:57			
Read mode	TIMED	TIMED			

## 2.3 Aspect



## **2.4 Star Slots**

## **2.5 FID Slots**

## A Summary

### A.1 Status

V&V Scientist	Beth Sundheim
V&V Date (YYYY-MM-DD)	2006.11.19
V&V Edition	1
V&V Disposition and Status	OK
V&V Charge Time	8.32533477

### A.2 Comments