

# V&V Reference Report

## L2 ASCDS Version : 8.4.5

Observation 60892 - L2 Version 3  
Chandra X-Ray Center

L2 Processing Date : Oct 20 2012

## Contents

<b>1</b>	<b>Front</b>	<b>2</b>
<b>2</b>	<b>OBI</b>	<b>3</b>
2.1	OBI . . . . .	3
2.1.1	Images . . . . .	3
2.1.2	Bias . . . . .	3
2.1.3	Parameters . . . . .	4
2.1.4	Events . . . . .	4
2.2	Compared Parameters . . . . .	5
2.3	Star Slots . . . . .	6
2.4	FID Slots . . . . .	6
<b>A</b>	<b>Summary</b>	<b>7</b>
A.1	Status . . . . .	7
A.2	Comments . . . . .	7

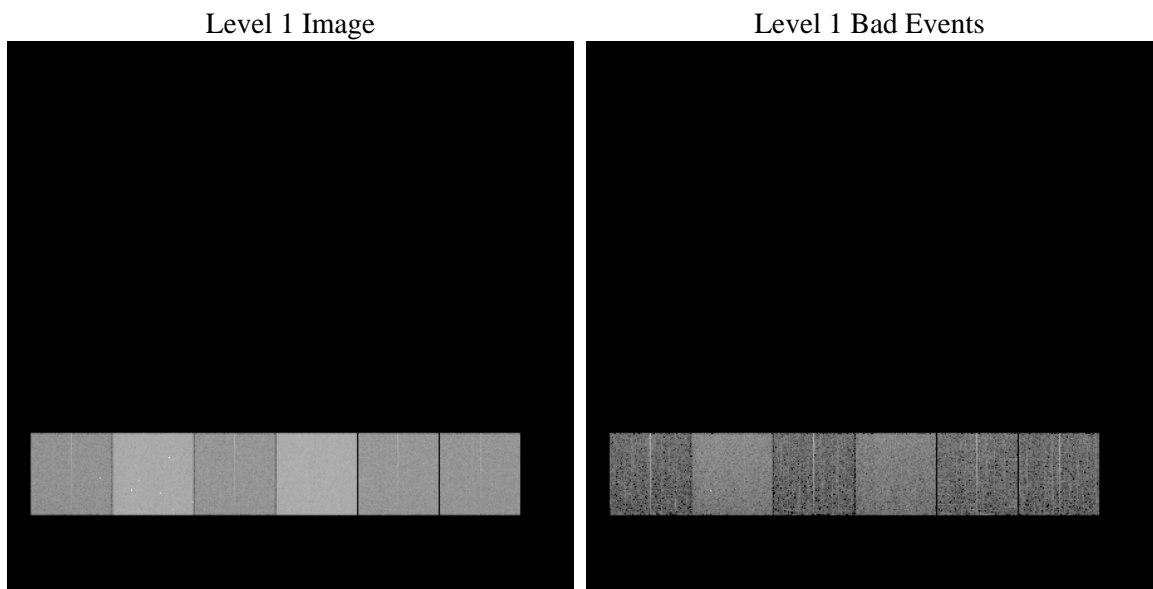
# 1 Front

seq_num	&#160	Sequence number
obs_id	60892	Observation id
title	ACIS-456789 diagnostics	Proposal title
observer	CHANDRA engineering request/realtime commanding	Principal investig
object	&#160	Source name
dtcycle	0	&#160
cycle	P	events from which exps? Prim/Second/Both
ra_targ	0.0	Observer's specified target RA [deg]
dec_targ	0.0	Observer's specified target Dec [deg]
ra_nom	92.188581171543	Nominal RA [deg]
dec_nom	38.872811918877	Nominal Dec [deg]
roll_nom	218.96596342687	Nominal Roll [deg]
revision	3	Processing version of data
ontime	8462.2605435848	Sum of GTIs [s]
livetime	8355.1063052204	Livetime [s]
ontime4	3299.3740096688	Sum of GTIs [s]
ontime5	8463.5244973302	Sum of GTIs [s]
ontime6	3578.1010681689	Sum of GTIs [s]
ontime7	8462.2605435848	Sum of GTIs [s]
ontime8	3698.0187709928	Sum of GTIs [s]
ontime9	3545.6909666657	Sum of GTIs [s]
l2events	1279073	Number of level 2 events

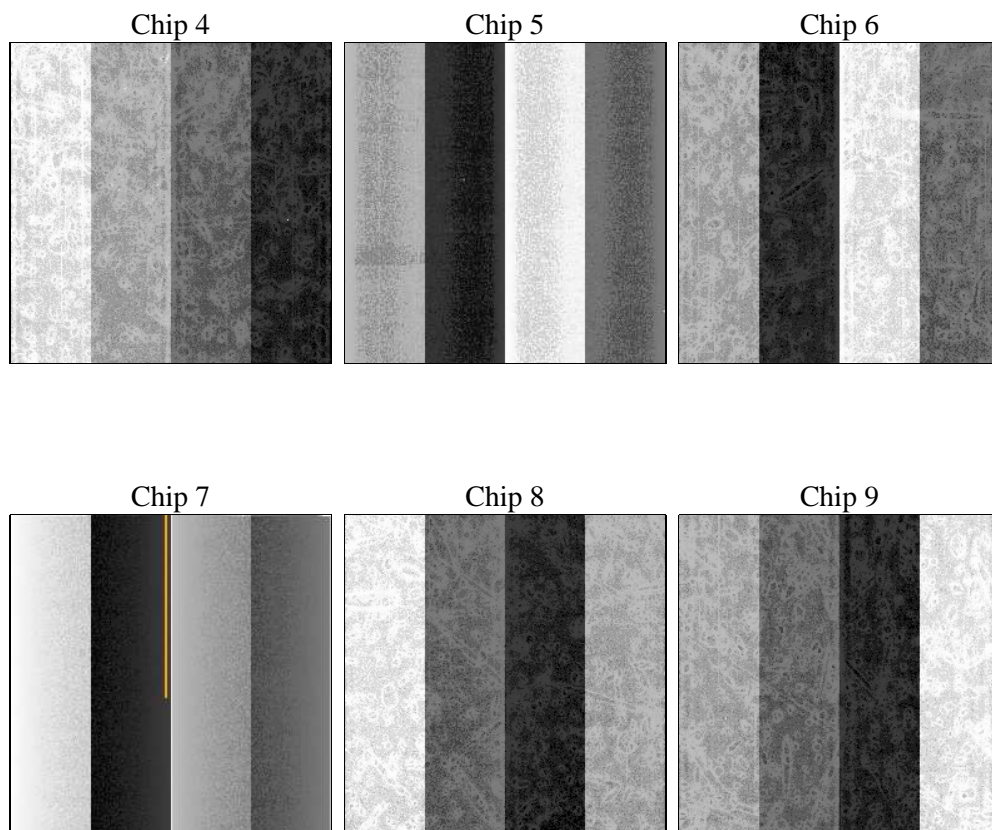
## 2 OBI

### 2.1 OBI

#### 2.1.1 Images



#### 2.1.2 Bias



### 2.1.3 Parameters

obi_num	0	Obi number	sched_exp_time	0.0	[s] Scheduled observation exposure time
ascdsver	8.4.5	Processing system revision	ontime	8462.2605435848	Sum of GTIs [s]
caldbver	4.5.2	&#160	ontime4	3299.3740096688	Sum of GTIs [s]
date	2012-10-20T14:01:44	Date and time of file creation	ontime5	8463.5244973302	Sum of GTIs [s]
revision	3	Processing version of data	ontime6	3578.1010681689	Sum of GTIs [s]
			ontime7	8462.2605435848	Sum of GTIs [s]
			ontime8	3698.0187709928	Sum of GTIs [s]
			ontime9	3545.6909666657	Sum of GTIs [s]
			l1events	1544291	Number of level 1 events

### 2.1.4 Events

	ccd 4	ccd 5	ccd 6	ccd 7	ccd 8	ccd 9		ccd 4	ccd 5	ccd 6	ccd 7	ccd 8	ccd 9
level 1 events	162459	393702	186309	427190	196022	178609	grade 0 events	79932	79026	87985	95699	92384	84754
rejected events	24550	57195	25164	44609	28321	25339		49%	20%	47%	22%	47%	47%
rejected %	15%	14%	13%	10%	14%	14%	grade 1 events	546	250	428	265	480	456
								0%	0%	0%	0%	0%	0%
							grade 2 events	21991	121472	27990	84785	29472	26296
								13%	30%	15%	19%	15%	14%
							grade 3 events	9128	20893	9925	38789	10736	9814
								5%	5%	5%	9%	5%	5%
							grade 4 events	9129	20510	9957	38511	10712	9804
								5%	5%	5%	9%	5%	5%
							grade 5 events	1635	10204	1799	8550	2172	1841
								1%	2%	0%	2%	1%	1%
							grade 6 events	17729	94718	25288	124797	24397	22602
								10%	24%	13%	29%	12%	12%
							grade 7 events	22369	46629	22937	35794	25669	23042
								13%	11%	12%	8%	13%	12%

## 2.2 Compared Parameters

Parameter	Planned	Actual
Instrument	ACIS	ACIS
Detector	ACIS-456789	ACIS-456789
Grating	NONE	NONE
Data mode	FAINT	FAINT
Observation mode	SECONDARY	SECONDARY
[deg] Pointing RA	0	92.18858117154298
[deg] Pointing Dec	0	38.872811918877
[deg] Pointing Roll	0.0	218.9659634268683
[mm] SIM focus pos	-0.684267	-0.7809083437167272
[mm] SIM defocus	0	0.7524282956875696
[mm] SIM translation stage pos	-190.132523	250.466033080201
[mm] SIM translation stage offset	0	-0.01005468664627074
[s] Observation start time (MET)	158121827.106855	158121826.08214
Observation start date	2003-01-05T02:43:47	2003-01-05T02:43:46
[s] Observation end time (MET)	158144131.107787	158144130.08307
Observation end date	2003-01-05T08:55:31	2003-01-05T08:55:30
Read mode	TIMED	TIMED

Parameter	Planned	Actual
Obspar format version number	7	7
Obspar file type	PREDICTED	ACTUAL
Obspar update status	NONE	UPDATED
On-chip summing requested	N	N
Subarray requested	NONE	NONE
Alternating exposures requested	N	N
[s] Primary exposure time	0.000000	3.2

## 2.3 Star Slots

## 2.4 FID Slots

## A Summary

### A.1 Status

V&V Scientist	Beth Sundheim
V&V Date (YYYY-MM-DD)	2012.11.21
V&V Edition	1
V&V Disposition and Status	OK
V&V Charge Time	8.4622605435848

### A.2 Comments