

# V&V Reference Report

## L2 ASCDS Version : 7.6.9

Observation 60888 - L2 Version 001  
Chandra X-Ray Center

L2 Processing Date : Oct 18 2006

## Contents

<b>1</b>	<b>Front</b>	<b>2</b>
<b>2</b>	<b>OBI</b>	<b>3</b>
2.1	OBI . . . . .	3
2.1.1	Images . . . . .	3
2.1.2	Bias . . . . .	3
2.1.3	Parameters . . . . .	4
2.1.4	Events . . . . .	4
2.2	Compared Parameters . . . . .	5
2.3	Aspect . . . . .	6
2.4	Star Slots . . . . .	8
2.5	FID Slots . . . . .	8
<b>A</b>	<b>Summary</b>	<b>9</b>
A.1	Status . . . . .	9
A.2	Comments . . . . .	9

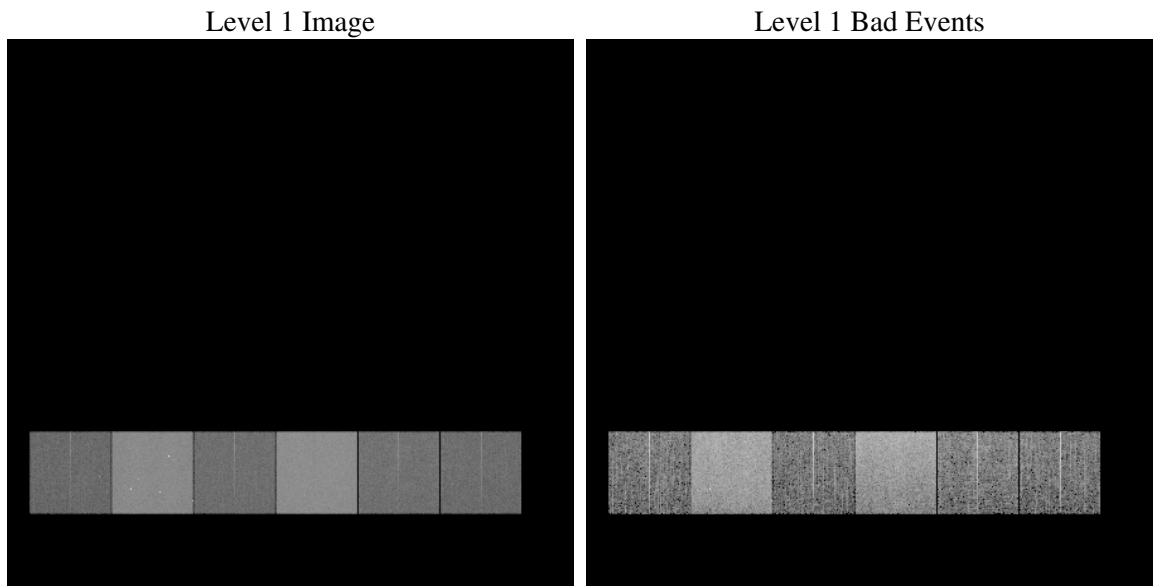
# 1 Front

seq_num	&#160
obs_id	60888
title	ACIS-456789 diagnostics
observer	CHANDRA engineering request/realtime commanding
object	&#160
dtcycle	0
cycle	P
ra_targ	0.0
dec_targ	0.0
ra_nom	109.88257739031
dec_nom	77.985118446964
roll_nom	178.4919135311
revision	2
ontime	8355.1999688745
livetime	8249.4013959711
ontime4	3253.8922631741
ontime5	8355.1999688745
ontime6	3522.8977752328
ontime7	8355.1999688745
ontime8	3701.15327245
ontime9	3454.8364638686
l2events	1237951

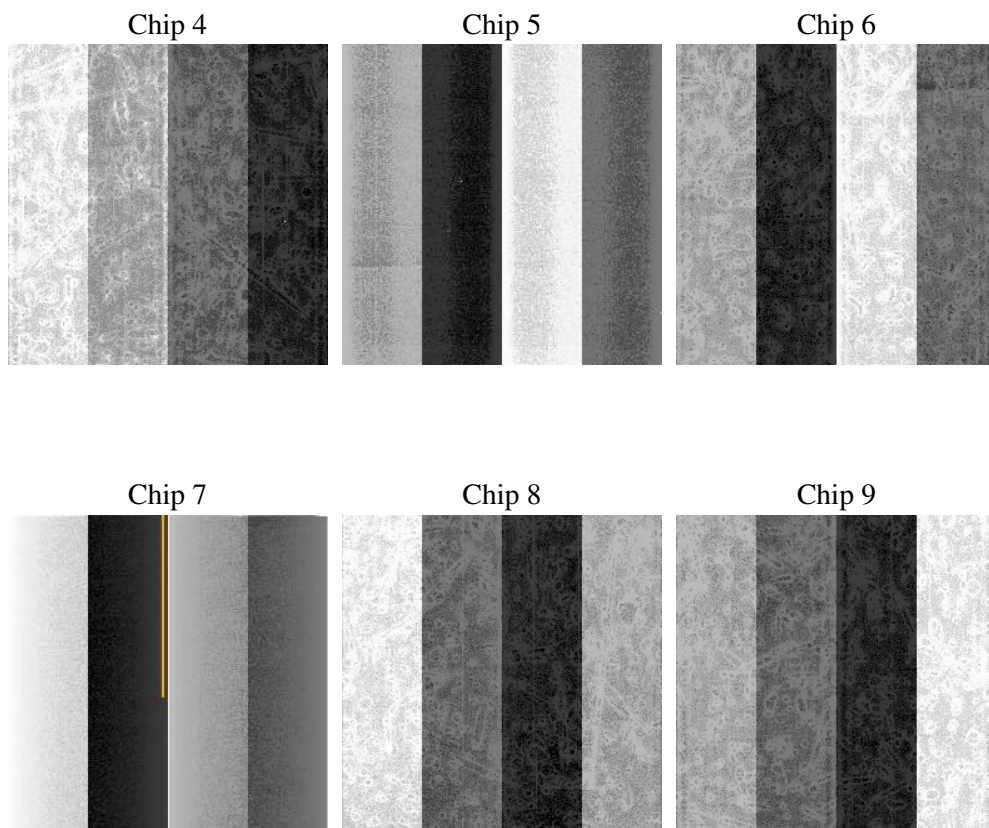
## 2 OBI

### 2.1 OBI

#### 2.1.1 Images



#### 2.1.2 Bias



### 2.1.3 Parameters

obi_num	0
ascdsver	7.6.9
caldsver	3.2.3
date	2006-10-19T01:58:35
revision	2

sched_exp_time	0.0
ontime	8462.2592436373
ontime4	3296.1318237484
ontime5	8462.2592436373
ontime6	3571.6194057763
ontime7	8462.2592436373
ontime8	3746.6338929236
ontime9	3490.5940141678
l1events	1544295

### 2.1.4 Events

	ccd 4	ccd 5	ccd 6	ccd 7	ccd 8	ccd 9
level 1 events	162577	393426	185908	426932	198821	176631
rejected events	27518	70469	27107	63311	31643	27272
rejected %	16%	17%	14%	14%	15%	15%

	ccd 4	ccd 5	ccd 6	ccd 7	ccd 8	ccd 9
grade 0 events	79455	39372	87783	67125	92968	83780
	48%	10%	47%	15%	46%	47%
grade 1 events	576	172	498	175	479	472
	0%	0%	0%	0%	0%	0%
grade 2 events	22003	156372	27813	110845	29573	25677
	13%	39%	14%	25%	14%	14%
grade 3 events	9131	10489	10071	27533	11118	9629
	5%	2%	5%	6%	5%	5%
grade 4 events	8866	10426	10067	26958	10876	9569
	5%	2%	5%	6%	5%	5%
grade 5 events	1637	7141	1878	7540	2097	1893
	1%	1%	1%	1%	1%	1%
grade 6 events	17336	110343	25189	135714	24717	22279
	10%	28%	13%	31%	12%	12%
grade 7 events	23573	59111	22609	51042	26993	23332
	14%	15%	12%	11%	13%	13%

## 2.2 Compared Parameters

Parameter	Planned	Actual	Parameter	Planned	Actual
Instrument	ACIS	ACIS	Obspar format version number	6	6
Detector	ACIS-456789	ACIS-456789	Obspar file type	PREDICTED	ACTUAL
Grating	NONE	NONE	Obspar update status	NONE	UPDATED
Data mode	FAINT	FAINT	On-chip summing requested	N	N
Observation mode	SECONDARY	SECONDARY	Subarray requested	NONE	NONE
Pointing RA	0	109.8825773903054	Alternating exposures requested	N	N
Pointing Dec	0	77.98511844696387	Primary exposure time	3.2	3.2
Pointing Roll	0.0	178.4919135311003			
SIM focus pos (mm)	-0.684267	-0.6828225247311905			
SIM defocus (mm)	0	0.8505141146731063			
SIM translation stage pos (mm)	-190.132523	250.466033080201			
SIM translation stage offset (mm)	0	-0.01005468664627074			
Observation start time	158353142.966531	158353141.94181			
Observation start date	2003-01-07T18:59:03	2003-01-07T18:59:01			
Observation end time	158376291.567499	158376290.54278			
Observation end date	2003-01-08T01:24:52	2003-01-08T01:24:50			
Read mode	TIMED	TIMED			

## 2.3 Aspect



## **2.4 Star Slots**

## **2.5 FID Slots**



## A Summary

### A.1 Status

V&V Scientist	Jen Lauer
V&V Date (YYYY-MM-DD)	2006.10.19
V&V Edition	1
V&V Disposition and Status	OK
V&V Charge Time	8.35519996

### A.2 Comments