

V&V Reference Report

L2 ASCDS Version : 8.4.5

Observation 60882 - L2 Version 3
Chandra X-Ray Center

L2 Processing Date : Oct 20 2012

Contents

1	Front	2
2	OBI	3
2.1	OBI	3
2.1.1	Images	3
2.1.2	Bias	3
2.1.3	Parameters	4
2.1.4	Events	4
2.2	Compared Parameters	5
2.3	Star Slots	6
2.4	FID Slots	6
A	Summary	7
A.1	Status	7
A.2	Comments	7

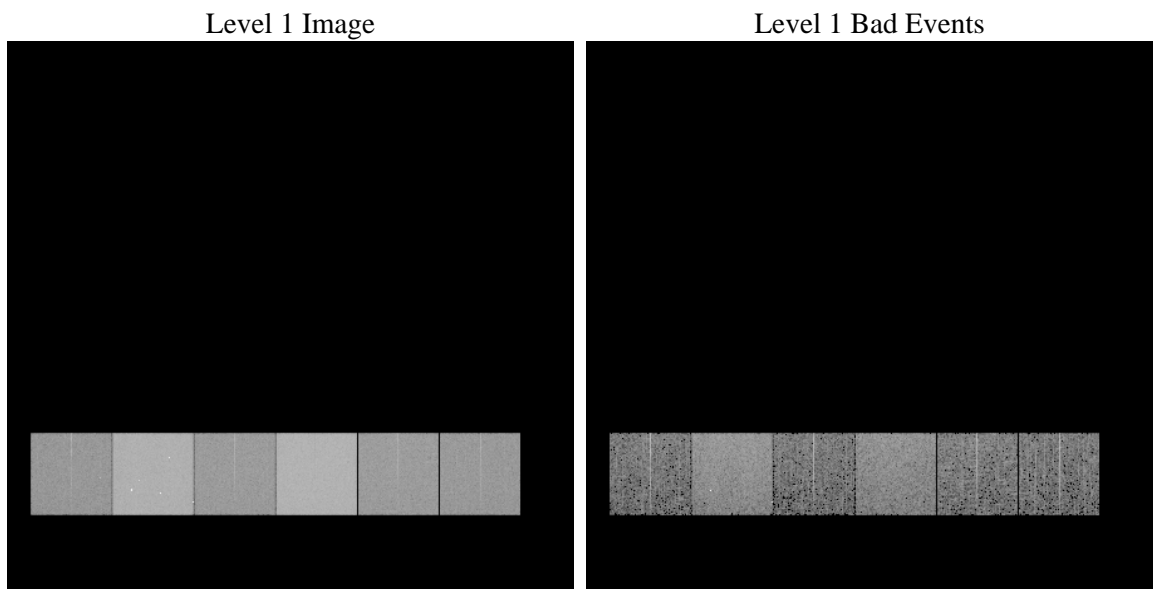
1 Front

seq_num	 	Sequence number
obs_id	60882	Observation id
title	ACIS-456789 diagnostics	Proposal title
observer	CHANDRA engineering request/realtime commanding	Principal investig
object	 	Source name
dtcycle	0	
cycle	P	events from which exps? Prim/Second/Both
ra_targ	0.0	Observer's specified target RA [deg]
dec_targ	0.0	Observer's specified target Dec [deg]
ra_nom	49.774466380611	Nominal RA [deg]
dec_nom	-5.5150641672803	Nominal Dec [deg]
roll_nom	295.8023790539	Nominal Roll [deg]
revision	3	Processing version of data
ontime	7075.1999736428	Sum of GTIs [s]
livetime	6985.6095314026	Livetime [s]
ontime4	2797.105548948	Sum of GTIs [s]
ontime5	7075.1999736428	Sum of GTIs [s]
ontime6	3061.6327106655	Sum of GTIs [s]
ontime7	7075.1999736428	Sum of GTIs [s]
ontime8	3108.2427582741	Sum of GTIs [s]
ontime9	2907.3002014756	Sum of GTIs [s]
l2events	1071689	Number of level 2 events

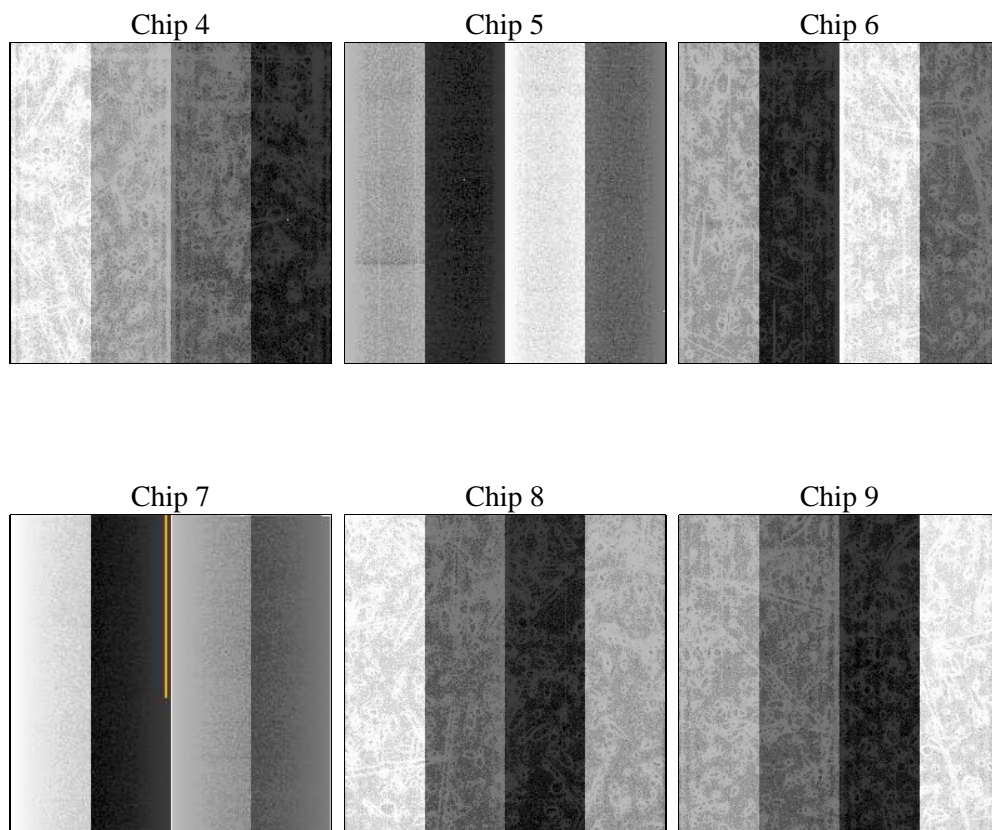
2 OBI

2.1 OBI

2.1.1 Images



2.1.2 Bias



2.1.3 Parameters

obi_num	0	Obi number	sched_exp_time	0.0	[s] Scheduled observation exposure time
ascdsver	8.4.5	Processing system revision	ontime	7075.1999736428	Sum of GTIs [s]
caldsver	4.5.2	 	ontime4	2797.105548948	Sum of GTIs [s]
date	2012-10-20T17:02:30	Date and time of file creation	ontime5	7075.1999736428	Sum of GTIs [s]
revision	3	Processing version of data	ontime6	3061.6327106655	Sum of GTIs [s]
			ontime7	7075.1999736428	Sum of GTIs [s]
			ontime8	3108.2427582741	Sum of GTIs [s]
			ontime9	2907.3002014756	Sum of GTIs [s]
			l1events	1297042	Number of level 1 events

2.1.4 Events

	ccd 4	ccd 5	ccd 6	ccd 7	ccd 8	ccd 9		ccd 4	ccd 5	ccd 6	ccd 7	ccd 8	ccd 9
level 1 events	138726	331831	158540	357350	163965	146630	grade 0 events	67615	70965	75128	80369	77372	69116
rejected events	21902	47096	21056	38279	24042	21363		48%	21%	47%	22%	47%	47%
rejected %	15%	14%	13%	10%	14%	14%	grade 1 events	477	424	369	236	396	391
								0%	0%	0%	0%	0%	0%
							grade 2 events	18893	99388	23848	71068	24428	21600
								13%	29%	15%	19%	14%	14%
							grade 3 events	7905	18584	8522	32393	8923	8044
								5%	5%	5%	9%	5%	5%
							grade 4 events	7662	18170	8571	32177	8959	8024
								5%	5%	5%	9%	5%	5%
							grade 5 events	1378	8295	1554	7355	1824	1595
								0%	2%	0%	2%	1%	1%
							grade 6 events	14850	77929	21566	103355	20381	18641
								10%	23%	13%	28%	12%	12%
							grade 7 events	19946	38076	18982	30397	21682	19219
								14%	11%	11%	8%	13%	13%

2.2 Compared Parameters

Parameter	Planned	Actual	Parameter	Planned	Actual
Instrument	ACIS	ACIS	Obspar format version number	7	7
Detector	ACIS-456789	ACIS-456789	Obspar file type	PREDICTED	ACTUAL
Grating	NONE	NONE	Obspar update status	NONE	UPDATED
Data mode	FAINT	FAINT	On-chip summing requested	N	N
Observation mode	SECONDARY	SECONDARY	Subarray requested	NONE	NONE
[deg] Pointing RA	0	49.7744663806107	Alternating exposures requested	N	N
[deg] Pointing Dec	0	-5.515064167280279	[s] Primary exposure time	0.000000	3.2
[deg] Pointing Roll	0.0	295.8023790538994			
[mm] SIM focus pos	-0.684267	-0.7809083437167272			
[mm] SIM defocus	0	0.7524282956875696			
[mm] SIM translation stage pos	-190.132523	250.466033080201			
[mm] SIM translation stage offset	0	-0.01005468664627074			
[s] Observation start time (MET)	158806369.285474	158806368.26076			
Observation start date	2003-01-13T00:52:49	2003-01-13T00:52:48			
[s] Observation end time (MET)	158830085.736466	158830084.71176			
Observation end date	2003-01-13T07:28:06	2003-01-13T07:28:04			
Read mode	TIMED	TIMED			

2.3 Star Slots

2.4 FID Slots

A Summary

A.1 Status

V&V Scientist	Beth Sundheim
V&V Date (YYYY-MM-DD)	2012.11.20
V&V Edition	1
V&V Disposition and Status	OK
V&V Charge Time	7.0751999736428

A.2 Comments