

# V&V Reference Report

## L2 ASCDS Version : 7.6.9

Observation 60882 - L2 Version 001  
Chandra X-Ray Center

L2 Processing Date : Oct 19 2006

## Contents

<b>1</b>	<b>Front</b>	<b>2</b>
<b>2</b>	<b>OBI</b>	<b>3</b>
2.1	OBI . . . . .	3
2.1.1	Images . . . . .	3
2.1.2	Bias . . . . .	3
2.1.3	Parameters . . . . .	4
2.1.4	Events . . . . .	4
2.2	Compared Parameters . . . . .	5
2.3	Aspect . . . . .	6
2.4	Star Slots . . . . .	8
2.5	FID Slots . . . . .	8
<b>A</b>	<b>Summary</b>	<b>9</b>
A.1	Status . . . . .	9
A.2	Comments . . . . .	9

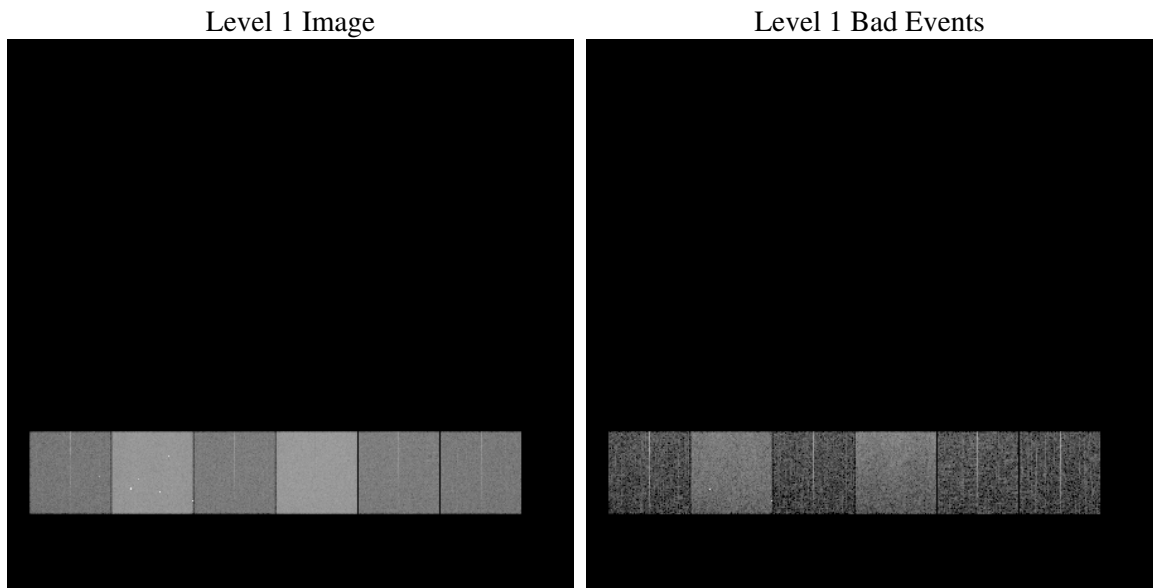
# 1 Front

seq_num	&#160
obs_id	60882
title	ACIS-456789 diagnostics
observer	CHANDRA engineering request/realtime commanding
object	&#160
dtcycle	0
cycle	P
ra_targ	0.0
dec_targ	0.0
ra_nom	49.774443776909
dec_nom	-5.515065675533
roll_nom	295.80225542921
revision	2
ontime	7075.1999736428
livetime	6985.6095314026
ontime4	2797.105548948
ontime5	7075.1999736428
ontime6	3060.0327106714
ontime7	7075.1999736428
ontime8	3108.2427582741
ontime9	2907.3002014756
l2events	1053129

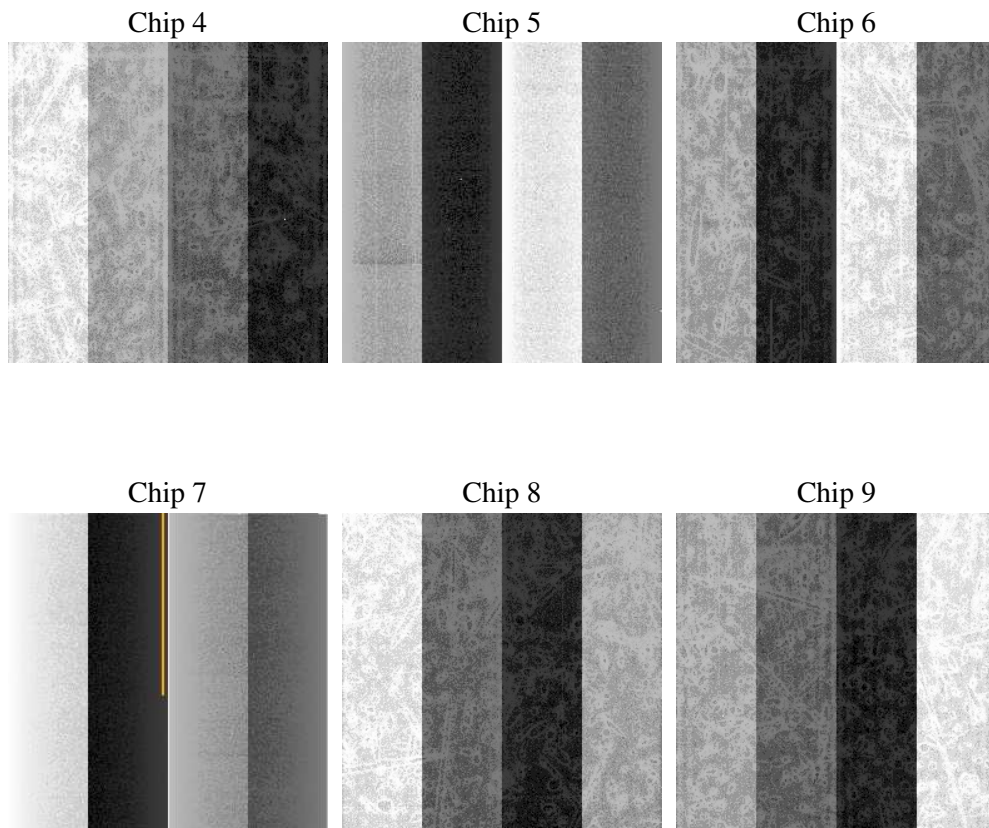
## 2 OBI

### 2.1 OBI

#### 2.1.1 Images



#### 2.1.2 Bias



### 2.1.3 Parameters

obi_num	0
ascdsver	7.6.9
caldbver	3.2.3
date	2006-10-19T03:30:20
revision	2

sched_exp_time	0.0
ontime	7081.5889761448
ontime4	2800.2535612583
ontime5	7081.5889761448
ontime6	3066.017156601
ontime7	7081.5889761448
ontime8	3111.3907705843
ontime9	2910.4482137859
l1events	1297042

### 2.1.4 Events

	ccd 4	ccd 5	ccd 6	ccd 7	ccd 8	ccd 9
level 1 events	138726	331831	158540	357350	163965	146630
rejected events	21924	55094	21214	49033	24040	21354
rejected %	15%	16%	13%	13%	14%	14%

	ccd 4	ccd 5	ccd 6	ccd 7	ccd 8	ccd 9
grade 0 events	67615	36995	75128	57578	77372	69116
	48%	11%	47%	16%	47%	47%
grade 1 events	477	282	369	155	396	391
	0%	0%	0%	0%	0%	0%
grade 2 events	18893	129835	23848	92145	24428	21600
	13%	39%	15%	25%	14%	14%
grade 3 events	7905	9905	8522	23299	8923	8044
	5%	2%	5%	6%	5%	5%
grade 4 events	7662	9601	8571	23049	8958	8024
	5%	2%	5%	6%	5%	5%
grade 5 events	1378	6234	1554	6506	1824	1595
	0%	1%	0%	1%	1%	1%
grade 6 events	14850	90693	21566	112520	20382	18641
	10%	27%	13%	31%	12%	12%
grade 7 events	19946	48286	18982	42098	21682	19219
	14%	14%	11%	11%	13%	13%

## 2.2 Compared Parameters

Parameter	Planned	Actual	Parameter	Planned	Actual
Instrument	ACIS	ACIS	Obspar format version number	6	6
Detector	ACIS-456789	ACIS-456789	Obspar file type	PREDICTED	ACTUAL
Grating	NONE	NONE	Obspar update status	NONE	UPDATED
Data mode	FAINT	FAINT	On-chip summing requested	N	N
Observation mode	SECONDARY	SECONDARY	Subarray requested	NONE	NONE
Pointing RA	0	49.77444377690853	Alternating exposures requested	N	N
Pointing Dec	0	-5.515065675532971	Primary exposure time	0.000000	3.2
Pointing Roll	0.0	295.8022554292061			
SIM focus pos (mm)	-0.684267	-0.7809083437167272			
SIM defocus (mm)	0	0.7524282956875696			
SIM translation stage pos (mm)	-190.132523	250.466033080201			
SIM translation stage offset (mm)	0	-0.01005468664627074			
Observation start time	158806369.285474	158806368.26076			
Observation start date	2003-01-13T00:52:49	2003-01-13T00:52:48			
Observation end time	158830085.736466	158830084.71176			
Observation end date	2003-01-13T07:28:06	2003-01-13T07:28:04			
Read mode	TIMED	TIMED			

## 2.3 Aspect



## **2.4 Star Slots**

## **2.5 FID Slots**



## A Summary

### A.1 Status

V&V Scientist	Jen Lauer
V&V Date (YYYY-MM-DD)	2006.10.19
V&V Edition	1
V&V Disposition and Status	OK
V&V Charge Time	7.07519997

### A.2 Comments