

V&V Reference Report

L2 ASCDS Version : 7.6.8

Observation 60850 - L2 Version 001
Chandra X-Ray Center

L2 Processing Date : Jul 21 2006

Contents

1	Front	2
2	OBI	3
2.1	OBI	3
2.1.1	Images	3
2.1.2	Bias	3
2.1.3	Parameters	4
2.1.4	Events	4
2.2	Compared Parameters	5
2.3	Aspect	6
2.4	Star Slots	8
2.5	FID Slots	8
A	Summary	9
A.1	Status	9
A.2	Comments	9

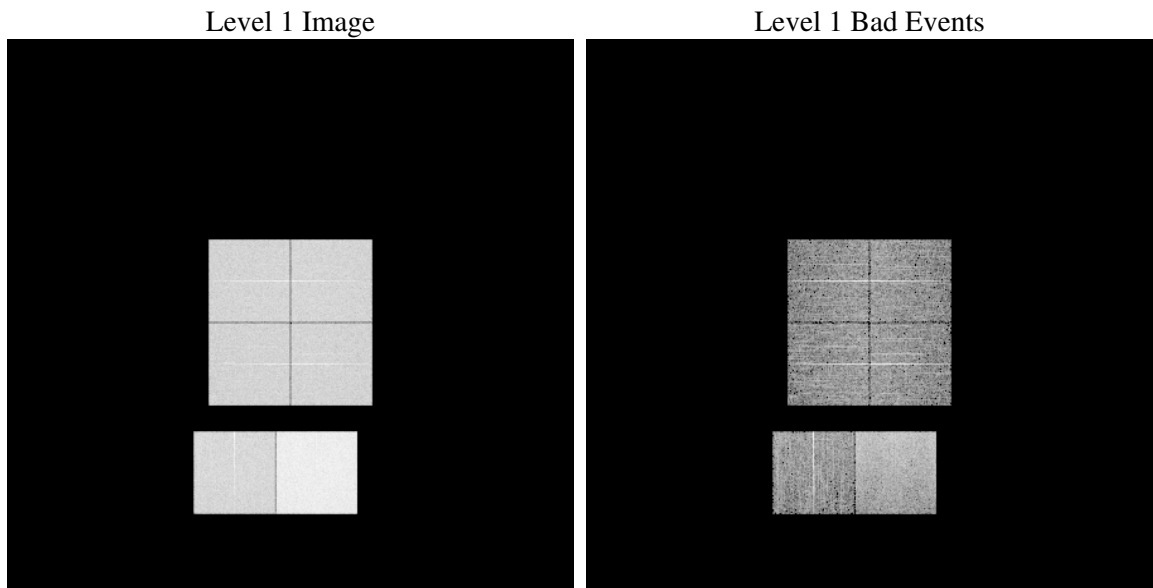
1 Front

seq_num	
obs_id	60850
title	ACIS-012367 diagnostics
observer	CHANDRA engineering request/realtime commanding
object	
dtcycle	0
cycle	P
ra_targ	0.0
dec_targ	0.0
ra_nom	228.59065900343
dec_nom	-21.872773586292
roll_nom	74.794574509894
revision	2
ontime	8463.2883458138
livetime	8356.1210927986
ontime0	4609.8174601495
ontime1	4661.714312613
ontime2	4357.1017589271
ontime3	4395.8293022215
ontime6	4749.3032372892
ontime7	8463.2883458138
l2events	1270708

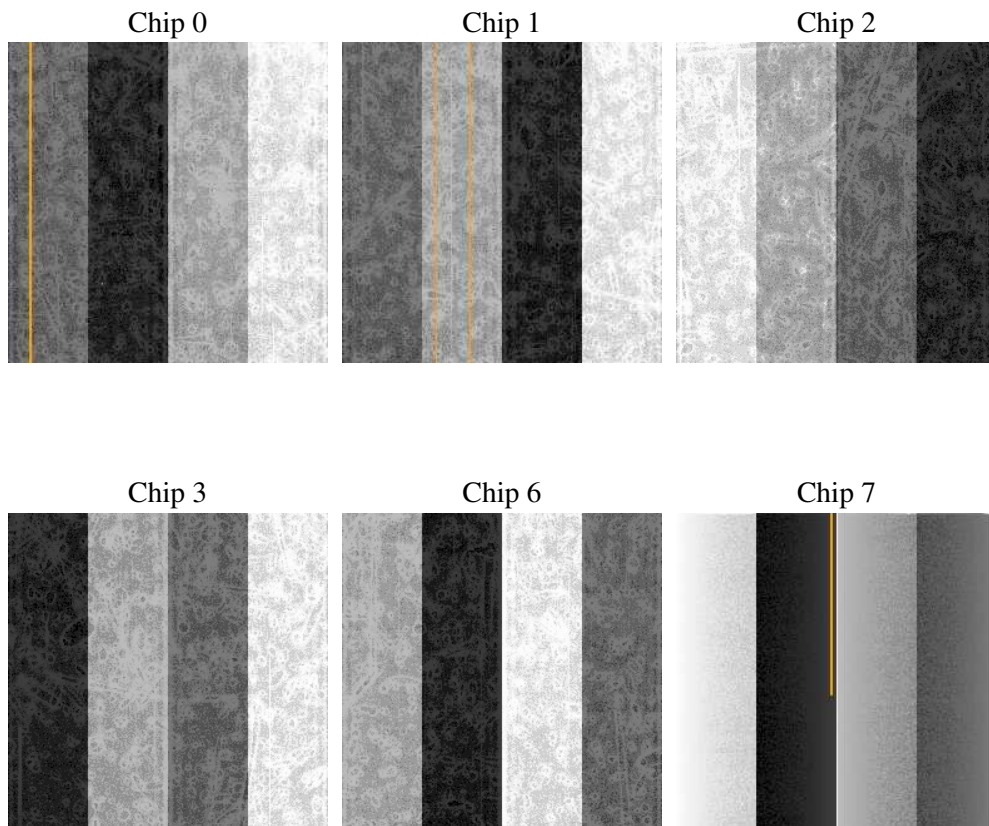
2 OBI

2.1 OBI

2.1.1 Images



2.1.2 Bias



2.1.3 Parameters

obi_num	0
ascdsver	7.6.8
caldbver	3.2.2
date	2006-07-21T04:28:49
revision	2

sched_exp_time	0.0
ontime	8465.4918054044
ontime0	4611.9798797369
ontime1	4663.8356921971
ontime2	4359.1820985079
ontime3	4398.0738018155
ontime6	4751.3425368965
ontime7	8465.4918054044
l1events	1546284

2.1.4 Events

	ccd 0	ccd 1	ccd 2	ccd 3	ccd 6	ccd 7
level 1 events	221932	225534	215035	217504	243612	422667
rejected events	29492	30768	31629	31704	34162	59470
rejected %	13%	13%	14%	14%	14%	14%

	ccd 0	ccd 1	ccd 2	ccd 3	ccd 6	ccd 7
grade 0 events	106124	106904	102996	104102	113639	66296
	47%	47%	47%	47%	46%	15%
grade 1 events	589	518	677	651	542	163
	0%	0%	0%	0%	0%	0%
grade 2 events	33692	34520	31191	31848	36447	108360
	15%	15%	14%	14%	14%	25%
grade 3 events	12453	12573	11857	12205	13075	27562
	5%	5%	5%	5%	5%	6%
grade 4 events	12490	12437	11759	12093	13042	26992
	5%	5%	5%	5%	5%	6%
grade 5 events	2121	2192	1961	2127	2310	7905
	0%	0%	0%	0%	0%	1%
grade 6 events	27816	28459	25729	25702	33382	134124
	12%	12%	11%	11%	13%	31%
grade 7 events	26647	27931	28865	28776	31175	51265
	12%	12%	13%	13%	12%	12%

2.2 Compared Parameters

Parameter	Planned	Actual	Parameter	Planned	Actual
Instrument	ACIS	ACIS	Obspar format version number	6	6
Detector	ACIS-012367	ACIS-012367	Obspar file type	PREDICTED	ACTUAL
Grating	NONE	NONE	Obspar update status	NONE	UPDATED
Data mode	FAINT	FAINT	On-chip summing requested	N	N
Observation mode	SECONDARY	SECONDARY	Subarray requested	NONE	NONE
Pointing RA	0	228.5906590034315	Alternating exposures requested	N	N
Pointing Dec	0	-21.87277358629179	Primary exposure time	0.000000	3.2
Pointing Roll	0.0	74.79457450989362			
SIM focus pos (mm)	-0.782348	-0.6828225247311905			
SIM defocus (mm)	0	0.8505141146731063			
SIM translation stage pos (mm)	-233.592463	250.4635187648994			
SIM translation stage offset (mm)	0	-0.007540371344731511			
Observation start time	161319290.140849	161319289.11611			
Observation start date	2003-02-11T02:54:50	2003-02-11T02:54:49			
Observation end time	161342512.541826	161342511.51709			
Observation end date	2003-02-11T09:21:53	2003-02-11T09:21:51			
Read mode	TIMED	TIMED			

2.3 Aspect

2.4 Star Slots

2.5 FID Slots

A Summary

A.1 Status

V&V Scientist	Jen Lauer
V&V Date (YYYY-MM-DD)	2006.07.21
V&V Edition	1
V&V Disposition and Status	OK
V&V Charge Time	8.46328834

A.2 Comments