

V&V Reference Report

L2 ASCDS Version : 8.4.5

Observation 60846 - L2 Version 3
Chandra X-Ray Center

L2 Processing Date : Oct 23 2012

Contents

1	Front	2
2	OBI	3
2.1	OBI	3
2.1.1	Images	3
2.1.2	Bias	3
2.1.3	Parameters	4
2.1.4	Events	4
2.2	Compared Parameters	5
2.3	Star Slots	6
2.4	FID Slots	6
A	Summary	7
A.1	Status	7
A.2	Comments	7

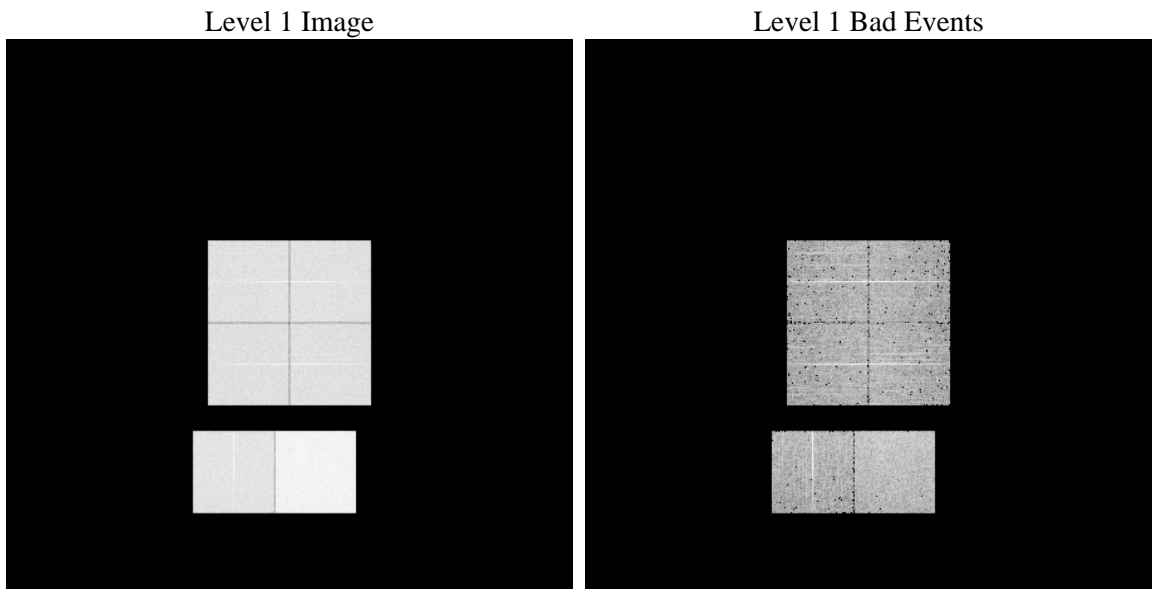
1 Front

seq_num	 	Sequence number
obs_id	60846	Observation id
title	ACIS-012367 diagnostics	Proposal title
observer	CHANDRA engineering request/realtime commanding	Principal investig
object	 	Source name
dtcycle	0	
cycle	P	events from which exps? Prim/Second/Both
ra_targ	0.0	Observer's specified target RA [deg]
dec_targ	0.0	Observer's specified target Dec [deg]
ra_nom	105.0205927636	Nominal RA [deg]
dec_nom	4.9800520738182	Nominal Dec [deg]
roll_nom	282.91168418419	Nominal Roll [deg]
revision	3	Processing version of data
ontime	7794.9115101397	Sum of GTIs [s]
livetime	7696.2076470661	Livetime [s]
ontime0	4233.0295678973	Sum of GTIs [s]
ontime1	4284.6396681368	Sum of GTIs [s]
ontime2	4044.8051176071	Sum of GTIs [s]
ontime3	4038.3235551715	Sum of GTIs [s]
ontime6	4530.9557104707	Sum of GTIs [s]
ontime7	7794.9115101397	Sum of GTIs [s]
l2events	1184595	Number of level 2 events

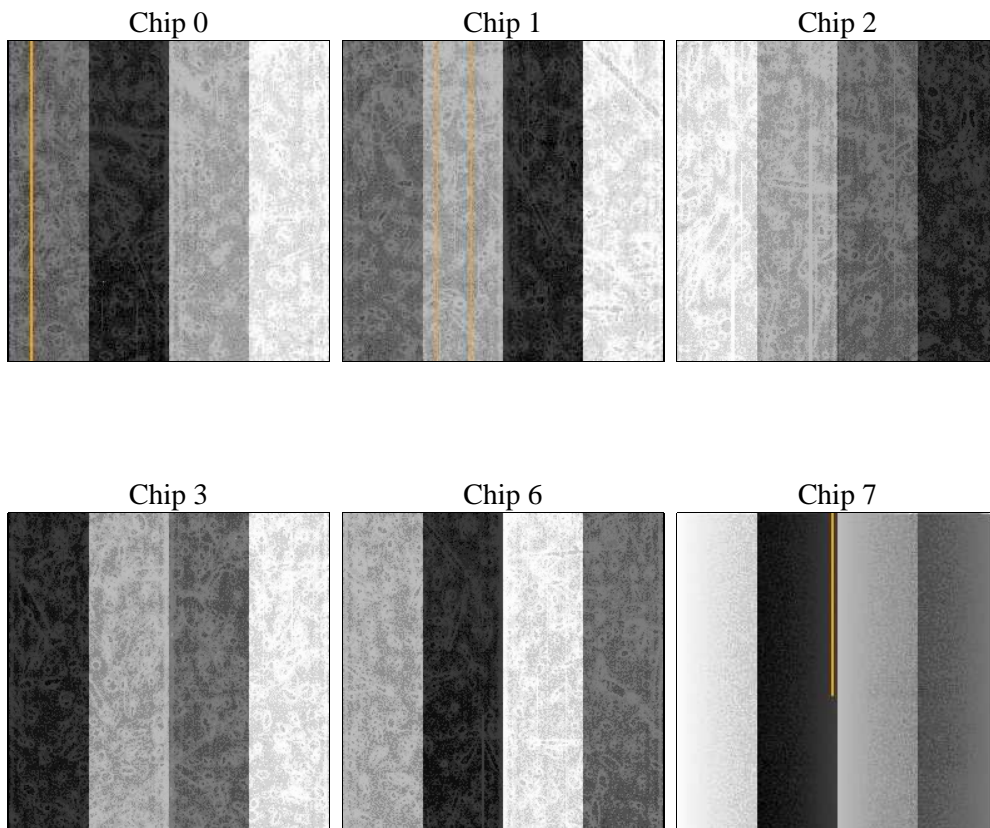
2 OBI

2.1 OBI

2.1.1 Images



2.1.2 Bias



2.1.3 Parameters

obi_num	0	Obi number	sched_exp_time	0.0	[s] Scheduled observation exposure time
ascdsver	8.4.5	Processing system revision	ontime	7794.9115101397	Sum of GTIs [s]
caldsver	4.5.2	 	ontime0	4233.0295678973	Sum of GTIs [s]
date	2012-10-23T06:22:30	Date and time of file creation	ontime1	4284.6396681368	Sum of GTIs [s]
revision	3	Processing version of data	ontime2	4044.8051176071	Sum of GTIs [s]
			ontime3	4038.3235551715	Sum of GTIs [s]
			ontime6	4530.9557104707	Sum of GTIs [s]
			ontime7	7794.9115101397	Sum of GTIs [s]
			l1events	1427344	Number of level 1 events

2.1.4 Events

	ccd 0	ccd 1	ccd 2	ccd 3	ccd 6	ccd 7		ccd 0	ccd 1	ccd 2	ccd 3	ccd 6	ccd 7
level 1 events	205375	206976	198603	201416	229383	385591	grade 0 events	97966	98409	95838	96843	108690	85218
rejected events	28674	27801	28195	30388	31323	42296		47%	47%	48%	48%	47%	22%
rejected %	13%	13%	14%	15%	13%	10%	grade 1 events	579	453	569	563	517	247
								0%	0%	0%	0%	0%	0%
							grade 2 events	30725	32201	28502	28684	34091	76589
								14%	15%	14%	14%	14%	19%
							grade 3 events	11325	11098	11194	11043	12135	34310
								5%	5%	5%	5%	5%	8%
							grade 4 events	11318	11272	11238	11063	12017	33756
								5%	5%	5%	5%	5%	8%
							grade 5 events	1905	1954	1788	2027	2261	7914
								0%	0%	0%	1%	0%	2%
							grade 6 events	25501	26195	23636	23395	31127	113560
								12%	12%	11%	11%	13%	29%
							grade 7 events	26056	25394	25838	27798	28545	33997
								12%	12%	13%	13%	12%	8%

2.2 Compared Parameters

Parameter	Planned	Actual	Parameter	Planned	Actual
Instrument	ACIS	ACIS	Obspar format version number	7	7
Detector	ACIS-012367	ACIS-012367	Obspar file type	PREDICTED	ACTUAL
Grating	NONE	NONE	Obspar update status	NONE	UPDATED
Data mode	FAINT	FAINT	On-chip summing requested	N	N
Observation mode	SECONDARY	SECONDARY	Subarray requested	NONE	NONE
[deg] Pointing RA	0	105.0205927636039	Alternating exposures requested	N	N
[deg] Pointing Dec	0	4.980052073818248	[s] Primary exposure time	0.000000	3.2
[deg] Pointing Roll	0.0	282.9116841841941			
[mm] SIM focus pos	-0.782348	-0.6828225247311905			
[mm] SIM defocus	0	0.8505141146731063			
[mm] SIM translation stage pos	-233.592463	250.466033080201			
[mm] SIM translation stage offset	0	-0.01005468664627074			
[s] Observation start time (MET)	161748941.458873	161748940.43416			
Observation start date	2003-02-16T02:15:41	2003-02-16T02:15:40			
[s] Observation end time (MET)	161760700.259367	161760699.23465			
Observation end date	2003-02-16T05:31:40	2003-02-16T05:31:39			
Read mode	TIMED	TIMED			

2.3 Star Slots

2.4 FID Slots

A Summary

A.1 Status

V&V Scientist	Beth Sundheim
V&V Date (YYYY-MM-DD)	2012.11.29
V&V Edition	1
V&V Disposition and Status	OK
V&V Charge Time	7.7949115101397

A.2 Comments