

# V&V Reference Report

## L2 ASCDS Version : 7.6.8

Observation 60838 - L2 Version 001  
Chandra X-Ray Center

L2 Processing Date : Jul 28 2006

## Contents

<b>1</b>	<b>Front</b>	<b>2</b>
<b>2</b>	<b>OBI</b>	<b>3</b>
2.1	OBI . . . . .	3
2.1.1	Images . . . . .	3
2.1.2	Bias . . . . .	3
2.1.3	Parameters . . . . .	4
2.1.4	Events . . . . .	4
2.2	Compared Parameters . . . . .	5
2.3	Aspect . . . . .	6
2.4	Star Slots . . . . .	8
2.5	FID Slots . . . . .	8
<b>A</b>	<b>Summary</b>	<b>9</b>
A.1	Status . . . . .	9
A.2	Comments . . . . .	9

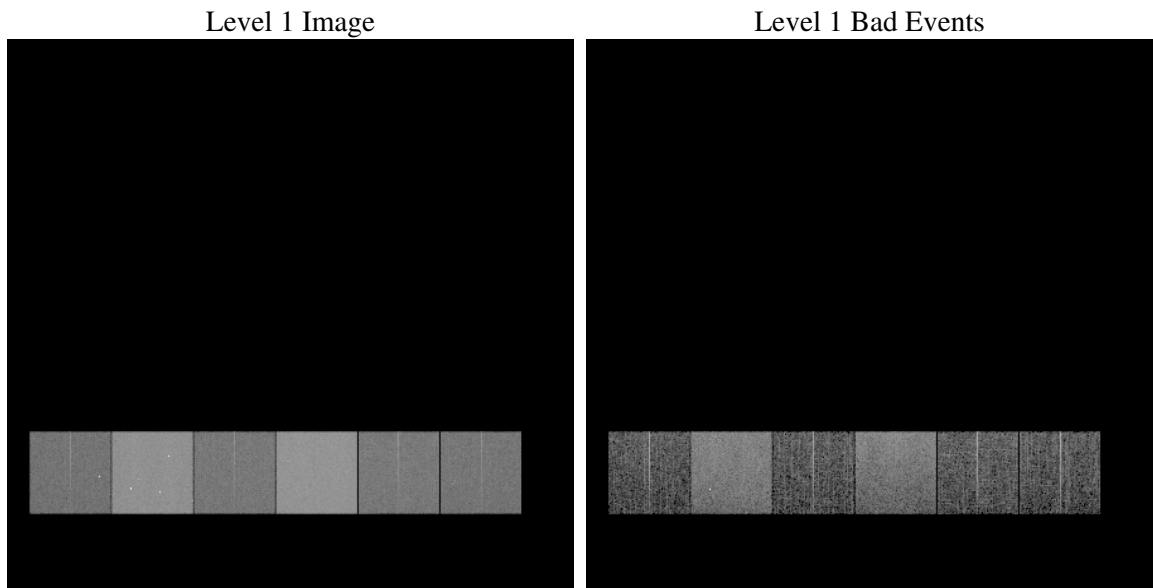
# 1 Front

seq_num	&#160
obs_id	60838
title	ACIS-456789 diagnostics
observer	CHANDRA engineering request/realtime commanding
object	&#160
dtcycle	0
cycle	P
ra_targ	0.0
dec_targ	0.0
ra_nom	67.823901468944
dec_nom	41.377725228544
roll_nom	275.92258901555
revision	2
ontime	8462.2745929956
livetime	8355.1201767291
ontime4	3552.3168750107
ontime5	8462.3156329989
ontime6	3805.0744336545
ontime7	8462.2745929956
ontime8	3925.0743252933
ontime9	3710.9615419805
l2events	1250528

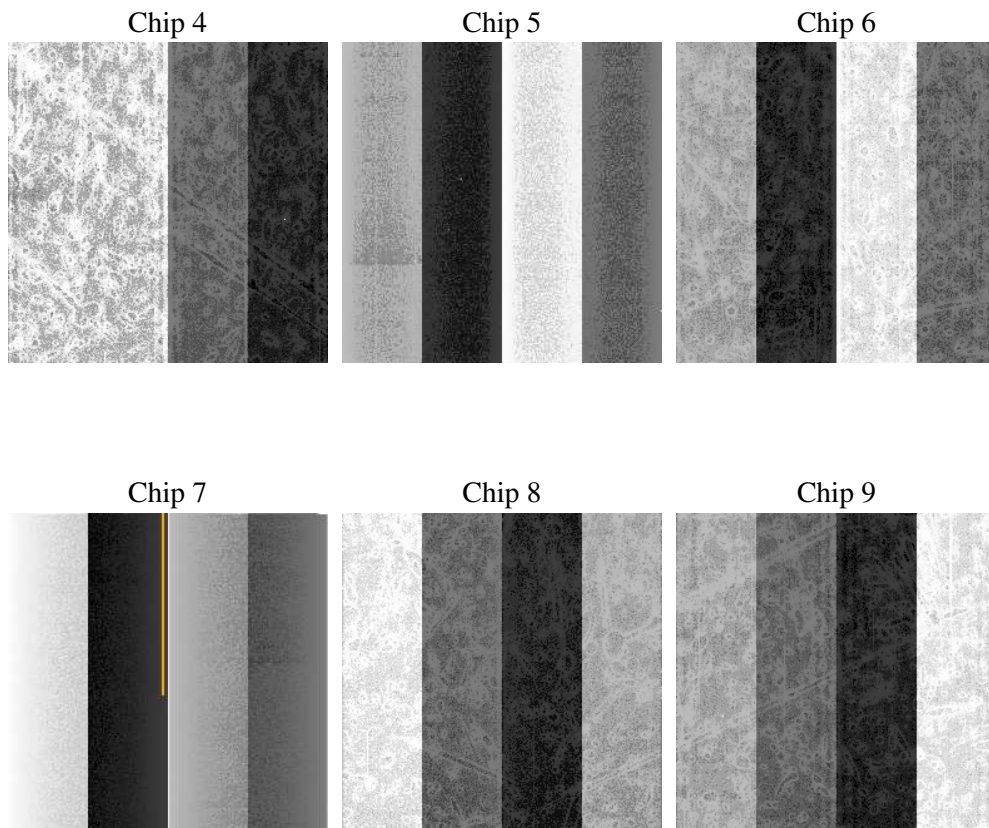
## 2 OBI

### 2.1 OBI

#### 2.1.1 Images



#### 2.1.2 Bias



### 2.1.3 Parameters

obi_num	0
ascdsver	7.6.8
caldsver	3.2.2
date	2006-07-28T04:57:59
revision	2

sched_exp_time	0.0
ontime	8465.4944359362
ontime4	3555.4135979414
ontime5	8465.4944359362
ontime6	3808.2121965885
ontime7	8465.4944359362
ontime8	3928.1300082505
ontime9	3714.2224249244
l1events	1543997

### 2.1.4 Events

	ccd 4	ccd 5	ccd 6	ccd 7	ccd 8	ccd 9
level 1 events	171093	383146	193140	413639	200879	182100
rejected events	26112	64719	26984	56701	29470	26964
rejected %	15%	16%	13%	13%	14%	14%

	ccd 4	ccd 5	ccd 6	ccd 7	ccd 8	ccd 9
grade 0 events	84486	39566	90788	64262	94355	85764
	49%	10%	47%	15%	46%	47%
grade 1 events	593	105	499	161	489	438
	0%	0%	0%	0%	0%	0%
grade 2 events	23330	151481	28823	108086	30097	26558
	13%	39%	14%	26%	14%	14%
grade 3 events	9584	10422	10121	26594	10997	9942
	5%	2%	5%	6%	5%	5%
grade 4 events	9556	10049	10297	25868	11059	9893
	5%	2%	5%	6%	5%	5%
grade 5 events	1699	6904	1879	7339	2195	1952
	0%	1%	0%	1%	1%	1%
grade 6 events	18156	107022	26279	132282	25030	23113
	10%	27%	13%	31%	12%	12%
grade 7 events	23689	57597	24454	49047	26657	24440
	13%	15%	12%	11%	13%	13%

## 2.2 Compared Parameters

Parameter	Planned	Actual	Parameter	Planned	Actual
Instrument	ACIS	ACIS	Obspar format version number	6	6
Detector	ACIS-456789	ACIS-456789	Obspar file type	PREDICTED	ACTUAL
Grating	NONE	NONE	Obspar update status	NONE	UPDATED
Data mode	FAINT	FAINT	On-chip summing requested	N	N
Observation mode	SECONDARY	SECONDARY	Subarray requested	NONE	NONE
Pointing RA	0	67.82390146894417	Alternating exposures requested	N	N
Pointing Dec	0	41.37772522854378	Primary exposure time	0.000000	3.2
Pointing Roll	0.0	275.9225890155486			
SIM focus pos (mm)	-0.684267	-0.6828225247311905			
SIM defocus (mm)	0	0.8505141146731063			
SIM translation stage pos (mm)	-190.132523	250.466033080201			
SIM translation stage offset (mm)	0	-0.01005468664627074			
Observation start time	162238184.229431	162238183.20473			
Observation start date	2003-02-21T18:09:44	2003-02-21T18:09:43			
Observation end time	162260164.330354	162260163.30565			
Observation end date	2003-02-22T00:16:04	2003-02-22T00:16:03			
Read mode	TIMED	TIMED			

## 2.3 Aspect



## **2.4 Star Slots**

## **2.5 FID Slots**



## A Summary

### A.1 Status

V&V Scientist	Jen Lauer
V&V Date (YYYY-MM-DD)	2006.07.28
V&V Edition	1
V&V Disposition and Status	OK
V&V Charge Time	8.46227459

### A.2 Comments