

V&V Reference Report

L2 ASCDS Version : 7.6.8

Observation 60820 - L2 Version 001
Chandra X-Ray Center

L2 Processing Date : Jul 22 2006

Contents

1	Front	2
2	OBI	3
2.1	OBI	3
2.1.1	Images	3
2.1.2	Bias	3
2.1.3	Parameters	4
2.1.4	Events	4
2.2	Compared Parameters	5
2.3	Aspect	6
2.4	Star Slots	8
2.5	FID Slots	8
A	Summary	9
A.1	Status	9
A.2	Comments	9

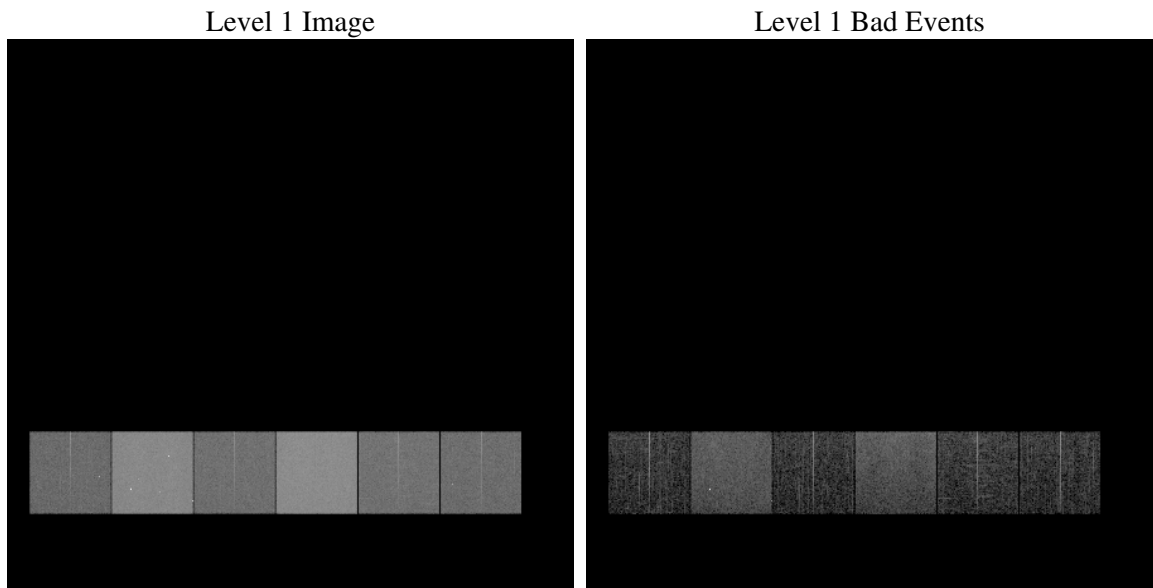
1 Front

seq_num	
obs_id	60820
title	ACIS-456789 diagnostics
observer	CHANDRA engineering request/realtime commanding
object	
dtcycle	0
cycle	P
ra_targ	0.0
dec_targ	0.0
ra_nom	185.21503525483
dec_nom	-28.974651680162
roll_nom	29.680661905058
revision	2
ontime	8462.176597029
livetime	8355.0234216464
ontime4	3537.6686170697
ontime5	8462.2176370323
ontime6	3860.0662876368
ontime7	8462.176597029
ontime8	4015.6372746229
ontime9	3658.9998936355
l2events	1244817

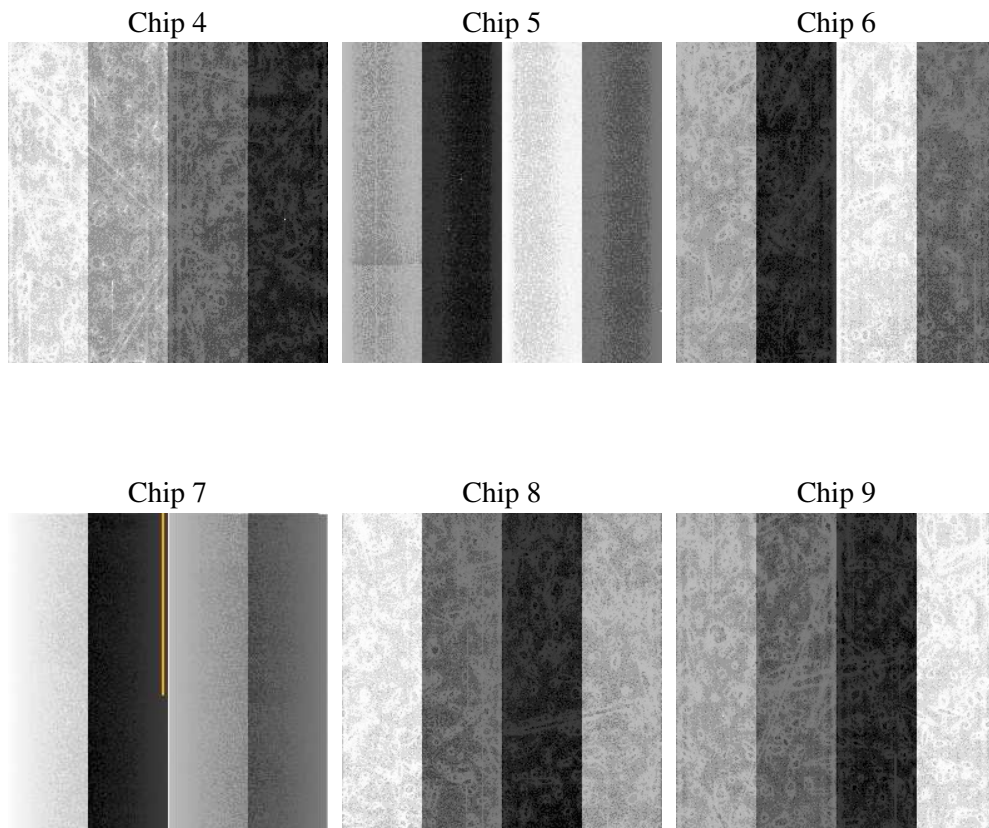
2 OBI

2.1 OBI

2.1.1 Images



2.1.2 Bias



2.1.3 Parameters

obi_num	0
ascdsver	7.6.8
caldsver	3.2.2
date	2006-07-22T23:58:31
revision	2

sched_exp_time	0.0
ontime	8462.2617658079
ontime4	3539.2093658149
ontime5	8462.2617658079
ontime6	3860.0693764091
ontime7	8462.2617658079
ontime8	4015.6372746229
ontime9	3659.1261024177
l1events	1542545

2.1.4 Events

	ccd 4	ccd 5	ccd 6	ccd 7	ccd 8	ccd 9
level 1 events	168534	381396	193401	414728	205282	179204
rejected events	27351	67315	26896	58285	30456	27111
rejected %	16%	17%	13%	14%	14%	15%

	ccd 4	ccd 5	ccd 6	ccd 7	ccd 8	ccd 9
grade 0 events	81626	36571	91343	64563	96219	83781
	48%	9%	47%	15%	46%	46%
grade 1 events	568	210	438	131	487	471
	0%	0%	0%	0%	0%	0%
grade 2 events	22678	149890	28753	107298	30173	26220
	13%	39%	14%	25%	14%	14%
grade 3 events	9307	10370	10252	26393	11413	9763
	5%	2%	5%	6%	5%	5%
grade 4 events	9417	9796	10215	26241	11422	9702
	5%	2%	5%	6%	5%	5%
grade 5 events	1724	8537	1898	7543	2312	1899
	1%	2%	0%	1%	1%	1%
grade 6 events	18155	107454	25942	131948	25599	22627
	10%	28%	13%	31%	12%	12%
grade 7 events	25059	58568	24560	50611	27657	24741
	14%	15%	12%	12%	13%	13%

2.2 Compared Parameters

Parameter	Planned	Actual	Parameter	Planned	Actual
Instrument	ACIS	ACIS	Obspar format version number	6	6
Detector	ACIS-456789	ACIS-456789	Obspar file type	PREDICTED	ACTUAL
Grating	NONE	NONE	Obspar update status	NONE	UPDATED
Data mode	FAINT	FAINT	On-chip summing requested	N	N
Observation mode	SECONDARY	SECONDARY	Subarray requested	NONE	NONE
Pointing RA	0	185.2150352548285	Alternating exposures requested	N	N
Pointing Dec	0	-28.974651680162	Primary exposure time	0.000000	3.2
Pointing Roll	0.0	29.68066190505801			
SIM focus pos (mm)	-0.684267	-0.6828225247311905			
SIM defocus (mm)	0	0.8505141146731063			
SIM translation stage pos (mm)	-190.132523	250.466033080201			
SIM translation stage offset (mm)	0	-0.01005468664627074			
Observation start time	163385407.327654	163385406.30296			
Observation start date	2003-03-07T00:50:07	2003-03-07T00:50:06			
Observation end time	163399283.778236	163399282.75355			
Observation end date	2003-03-07T04:41:24	2003-03-07T04:41:22			
Read mode	TIMED	TIMED			

2.3 Aspect

2.4 Star Slots

2.5 FID Slots

A Summary

A.1 Status

V&V Scientist	Beth Sundheim
V&V Date (YYYY-MM-DD)	2006.07.23
V&V Edition	1
V&V Disposition and Status	OK
V&V Charge Time	8.46217659

A.2 Comments