

V&V Reference Report

L2 ASCDS Version : 7.6.8

Observation 60817 - L2 Version 001
Chandra X-Ray Center

L2 Processing Date : Jul 22 2006

Contents

1	Front	2
2	OBI	3
2.1	OBI	3
2.1.1	Images	3
2.1.2	Bias	3
2.1.3	Parameters	4
2.1.4	Events	4
2.2	Compared Parameters	5
2.3	Aspect	6
2.4	Star Slots	8
2.5	FID Slots	8
A	Summary	9
A.1	Status	9
A.2	Comments	9

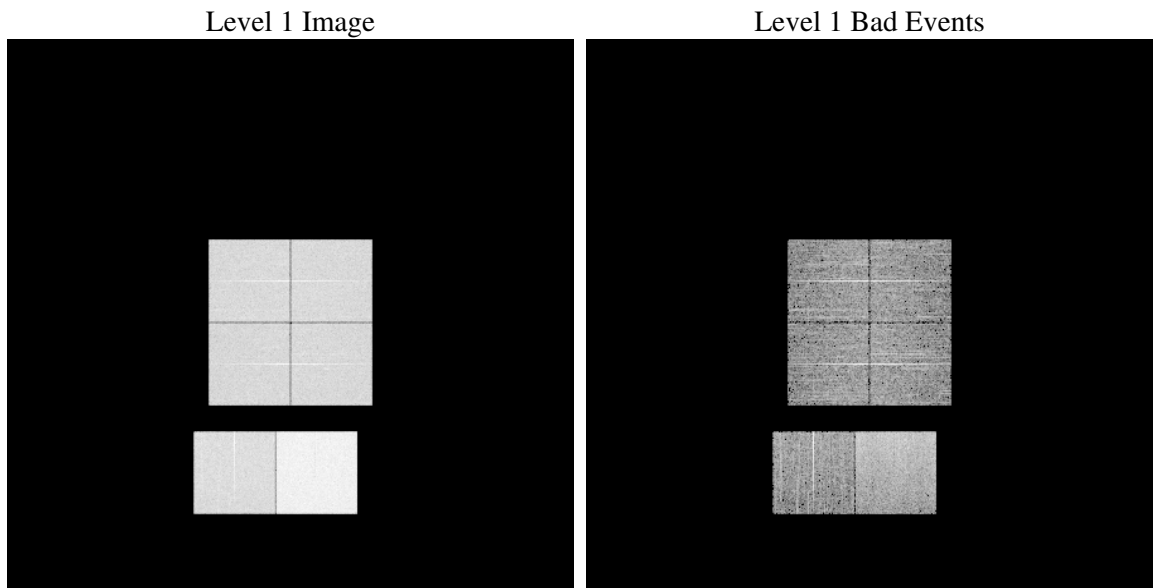
1 Front

seq_num	
obs_id	60817
title	ACIS-012367 diagnostics
observer	CHANDRA engineering request/realtime commanding
object	
dtcycle	0
cycle	P
ra_targ	0.0
dec_targ	0.0
ra_nom	229.97810821372
dec_nom	27.020920532257
roll_nom	100.17941617898
revision	2
ontime	8457.599968493
livetime	8350.5047451366
ontime0	4684.5114555359
ontime1	4703.9959069788
ontime2	4435.5507094562
ontime3	4493.2097196281
ontime6	4960.1176463664
ontime7	8457.599968493
l2events	1266786

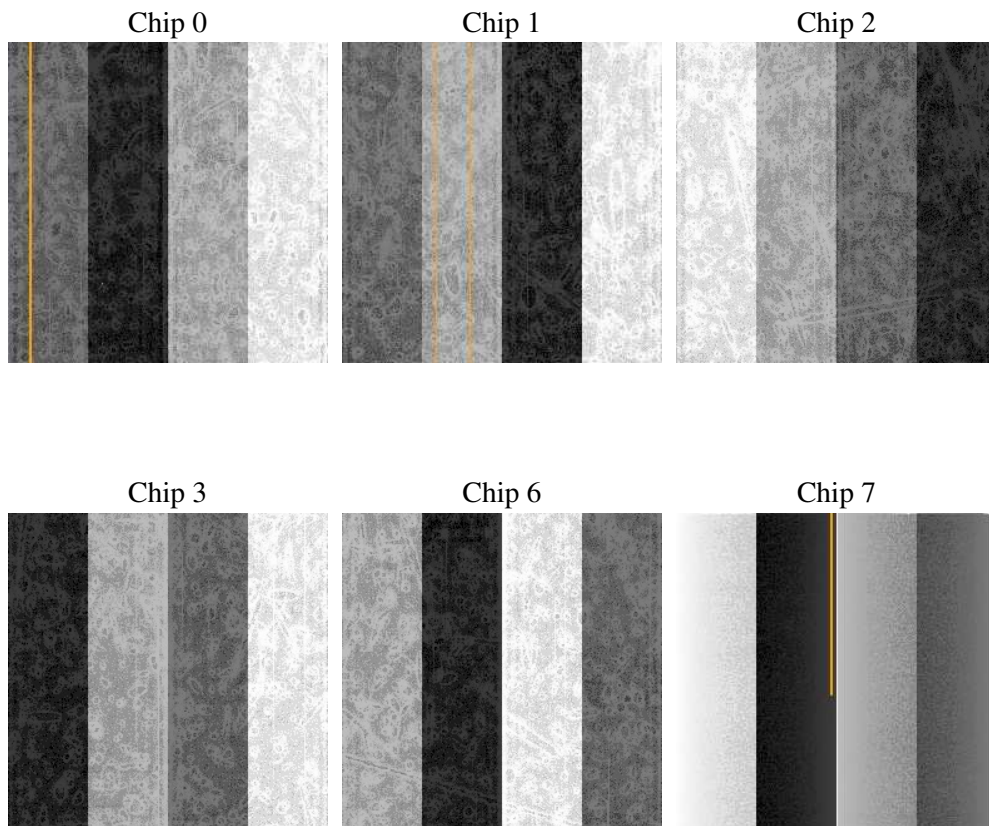
2 OBI

2.1 OBI

2.1.1 Images



2.1.2 Bias



2.1.3 Parameters

obi_num	0
ascdsver	7.6.8
caldbver	3.2.2
date	2006-07-23T00:38:20
revision	2

sched_exp_time	0.0
ontime	8465.4999662042
ontime0	4686.5253296793
ontime1	4705.9687411189
ontime2	4440.2097170055
ontime3	4495.3056737781
ontime6	4965.249440521
ontime7	8465.4999662042
l1events	1545088

2.1.4 Events

	ccd 0	ccd 1	ccd 2	ccd 3	ccd 6	ccd 7
level 1 events	224792	224036	215233	219955	247769	413303
rejected events	32216	31022	31432	32776	34156	58554
rejected %	14%	13%	14%	14%	13%	14%

	ccd 0	ccd 1	ccd 2	ccd 3	ccd 6	ccd 7
grade 0 events	106783	105961	103093	105055	116577	64514
	47%	47%	47%	47%	47%	15%
grade 1 events	604	503	626	601	561	185
	0%	0%	0%	0%	0%	0%
grade 2 events	33517	34456	31293	31840	36676	106756
	14%	15%	14%	14%	14%	25%
grade 3 events	12450	12296	12094	12319	13243	26574
	5%	5%	5%	5%	5%	6%
grade 4 events	12408	12282	11934	12069	13354	26133
	5%	5%	5%	5%	5%	6%
grade 5 events	2188	2132	2047	2180	2470	7607
	0%	0%	0%	0%	0%	1%
grade 6 events	27551	28139	25651	26038	34029	131209
	12%	12%	11%	11%	13%	31%
grade 7 events	29291	28267	28495	29853	30859	50325
	13%	12%	13%	13%	12%	12%

2.2 Compared Parameters

Parameter	Planned	Actual	Parameter	Planned	Actual
Instrument	ACIS	ACIS	Obspar format version number	6	6
Detector	ACIS-012367	ACIS-012367	Obspar file type	PREDICTED	ACTUAL
Grating	NONE	NONE	Obspar update status	NONE	UPDATED
Data mode	FAINT	FAINT	On-chip summing requested	N	N
Observation mode	SECONDARY	SECONDARY	Subarray requested	NONE	NONE
Pointing RA	0	229.9781082137182	Alternating exposures requested	N	N
Pointing Dec	0	27.02092053225716	Primary exposure time	0.000000	3.2
Pointing Roll	0.0	100.1794161789824			
SIM focus pos (mm)	-0.782348	-0.7809083437167272			
SIM defocus (mm)	0	0.7524282956875696			
SIM translation stage pos (mm)	-233.592463	250.466033080201			
SIM translation stage offset (mm)	0	-0.01005468664627074			
Observation start time	163619794.087525	163619793.06282			
Observation start date	2003-03-09T17:56:34	2003-03-09T17:56:33			
Observation end time	163631589.788021	163631588.76332			
Observation end date	2003-03-09T21:13:10	2003-03-09T21:13:08			
Read mode	TIMED	TIMED			

2.3 Aspect

2.4 Star Slots

2.5 FID Slots

A Summary

A.1 Status

V&V Scientist	Beth Sundheim
V&V Date (YYYY-MM-DD)	2006.07.23
V&V Edition	1
V&V Disposition and Status	OK
V&V Charge Time	8.45759996

A.2 Comments