

# V&V Reference Report

## L2 ASCDS Version : 7.6.8

Observation 60812 - L2 Version 001  
Chandra X-Ray Center

L2 Processing Date : Jul 26 2006

## Contents

<b>1</b>	<b>Front</b>	<b>2</b>
<b>2</b>	<b>OBI</b>	<b>3</b>
2.1	OBI . . . . .	3
2.1.1	Images . . . . .	3
2.1.2	Bias . . . . .	3
2.1.3	Parameters . . . . .	4
2.1.4	Events . . . . .	4
2.2	Compared Parameters . . . . .	5
2.3	Aspect . . . . .	6
2.4	Star Slots . . . . .	8
2.5	FID Slots . . . . .	8
<b>A</b>	<b>Summary</b>	<b>9</b>
A.1	Status . . . . .	9
A.2	Comments . . . . .	9

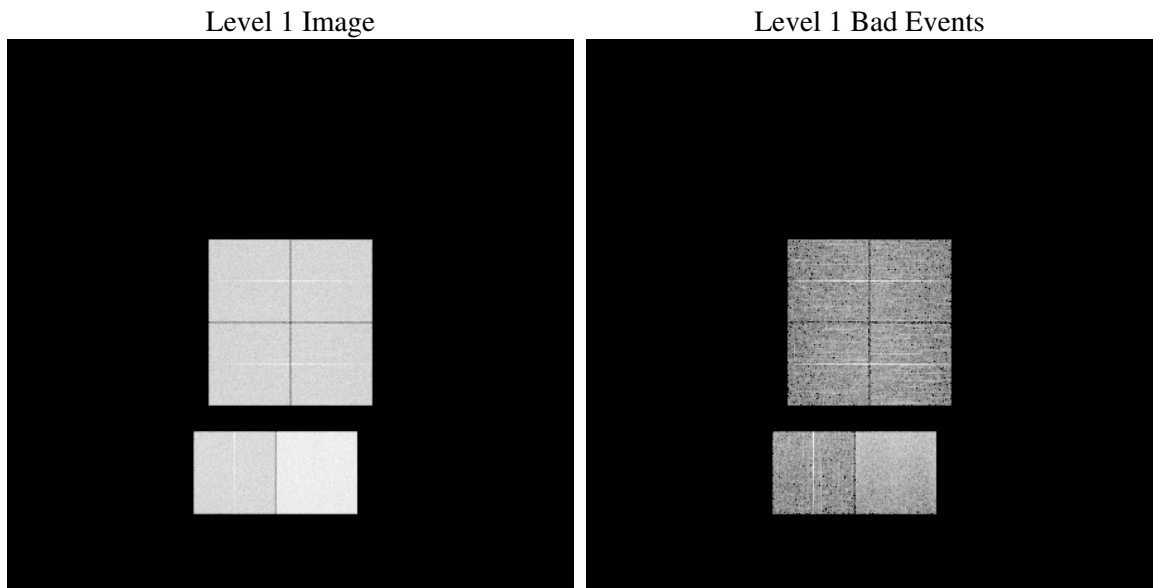
# 1 Front

seq_num	&#160
obs_id	60812
title	ACIS-012367 diagnostics
observer	CHANDRA engineering request/realtime commanding
object	&#160
dtcycle	0
cycle	P
ra_targ	0.0
dec_targ	0.0
ra_nom	148.97309105643
dec_nom	59.974756548341
roll_nom	209.06371756589
revision	2
ontime	7797.156059444
livetime	7698.4237745355
ontime0	4254.8134070337
ontime1	4332.6384200752
ontime2	4154.4248108268
ontime3	4196.3935636878
ontime6	4595.2405261397
ontime7	7797.156059444
l2events	1170464

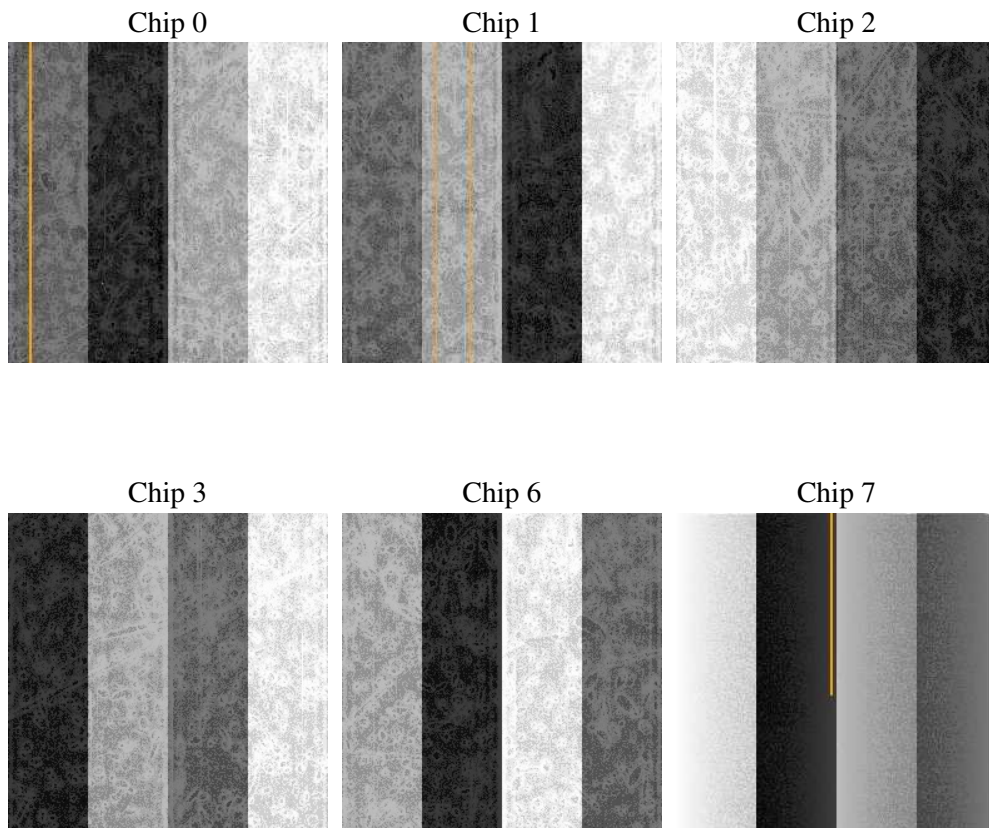
## 2 OBI

### 2.1 OBI

#### 2.1.1 Images



#### 2.1.2 Bias



### 2.1.3 Parameters

obi_num	0
ascdsver	7.6.8
caldbver	3.2.2
date	2006-07-26T04:16:53
revision	2

sched_exp_time	0.0
ontime	7797.8516484201
ontime0	4255.4679560065
ontime1	4333.2519290447
ontime2	4154.997279793
ontime3	4197.1301926672
ontime6	4595.7719551325
ontime7	7797.8516484201
l1events	1424967

### 2.1.4 Events

	ccd 0	ccd 1	ccd 2	ccd 3	ccd 6	ccd 7
level 1 events	201330	206481	201855	205591	229316	380394
rejected events	27974	29046	28948	31569	31045	52616
rejected %	13%	14%	14%	15%	13%	13%

	ccd 0	ccd 1	ccd 2	ccd 3	ccd 6	ccd 7
grade 0 events	95556	97908	97161	97759	108065	61075
	47%	47%	48%	47%	47%	16%
grade 1 events	509	486	554	593	557	137
	0%	0%	0%	0%	0%	0%
grade 2 events	30144	31340	29204	29956	34384	97676
	14%	15%	14%	14%	14%	25%
grade 3 events	11286	11174	11301	11305	12471	25114
	5%	5%	5%	5%	5%	6%
grade 4 events	11006	11156	11306	11314	12239	24512
	5%	5%	5%	5%	5%	6%
grade 5 events	1967	2066	1888	2025	2224	7114
	0%	1%	0%	0%	0%	1%
grade 6 events	25364	25857	23935	23688	31112	119401
	12%	12%	11%	11%	13%	31%
grade 7 events	25498	26494	26506	28951	28264	45365
	12%	12%	13%	14%	12%	11%

## 2.2 Compared Parameters

Parameter	Planned	Actual	Parameter	Planned	Actual
Instrument	ACIS	ACIS	Obspar format version number	6	6
Detector	ACIS-012367	ACIS-012367	Obspar file type	PREDICTED	ACTUAL
Grating	NONE	NONE	Obspar update status	NONE	UPDATED
Data mode	FAINT	FAINT	On-chip summing requested	N	N
Observation mode	SECONDARY	SECONDARY	Subarray requested	NONE	NONE
Pointing RA	0	148.9730910564334	Alternating exposures requested	N	N
Pointing Dec	0	59.97475654834083	Primary exposure time	0.000000	3.2
Pointing Roll	0.0	209.0637175658932			
SIM focus pos (mm)	-0.782348	-0.6828225247311905			
SIM defocus (mm)	0	0.8505141146731063			
SIM translation stage pos (mm)	-233.592463	250.466033080201			
SIM translation stage offset (mm)	0	-0.01005468664627074			
Observation start time	164025556.754617	164025555.72991			
Observation start date	2003-03-14T10:39:17	2003-03-14T10:39:15			
Observation end time	164036833.805092	164036832.78039			
Observation end date	2003-03-14T13:47:14	2003-03-14T13:47:12			
Read mode	TIMED	TIMED			

## 2.3 Aspect



## **2.4 Star Slots**

## **2.5 FID Slots**



## A Summary

### A.1 Status

V&V Scientist	Jen Lauer
V&V Date (YYYY-MM-DD)	2006.07.26
V&V Edition	1
V&V Disposition and Status	OK
V&V Charge Time	7.79715605

### A.2 Comments