

# V&V Reference Report

## L2 ASCDS Version : 7.6.8

Observation 60809 - L2 Version 001  
Chandra X-Ray Center

L2 Processing Date : Aug 21 2006

## Contents

<b>1</b>	<b>Front</b>	<b>2</b>
<b>2</b>	<b>OBI</b>	<b>3</b>
2.1	OBI . . . . .	3
2.1.1	Images . . . . .	3
2.1.2	Bias . . . . .	3
2.1.3	Parameters . . . . .	4
2.1.4	Events . . . . .	4
2.2	Compared Parameters . . . . .	5
2.3	Aspect . . . . .	6
2.4	Star Slots . . . . .	8
2.5	FID Slots . . . . .	8
<b>A</b>	<b>Summary</b>	<b>9</b>
A.1	Status . . . . .	9
A.2	Comments . . . . .	9

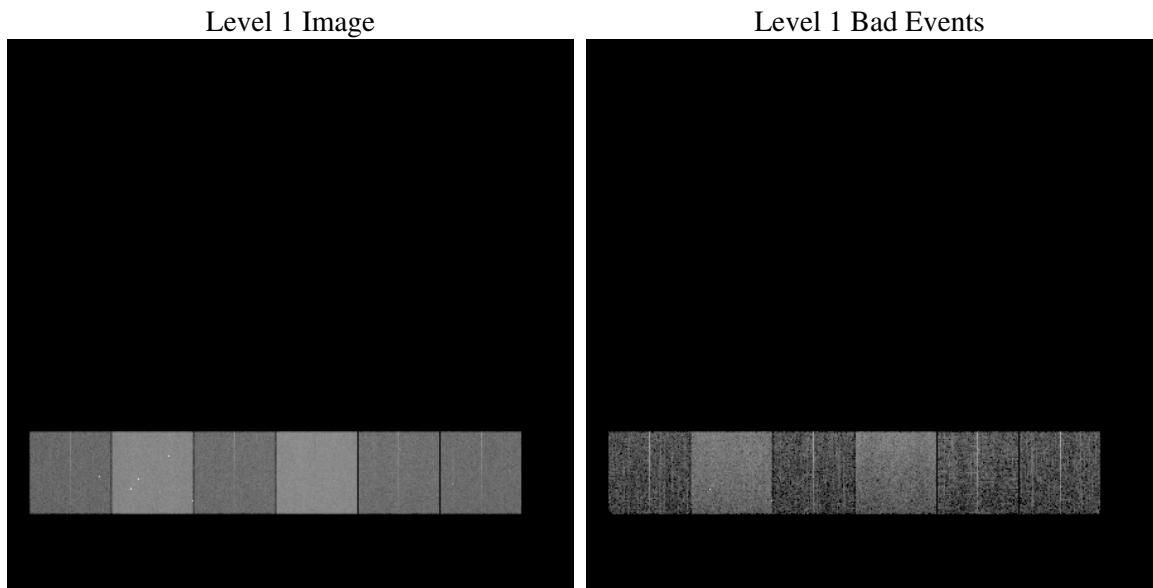
# 1 Front

seq_num	&#160
obs_id	60809
title	ACIS-456789 diagnostics
observer	CHANDRA engineering request/realtime commanding
object	&#160
dtcycle	0
cycle	P
ra_targ	0.0
dec_targ	0.0
ra_nom	159.36383139569
dec_nom	61.2773010207
roll_nom	199.68361522208
revision	2
ontime	6588.3165711164
livetime	6504.891339685
ontime4	2660.372936815
ontime5	6588.3576111197
ontime6	2916.3719640672
ontime7	6588.3165711164
ontime8	2961.8282949328
ontime9	2848.1876316965
l2events	978158

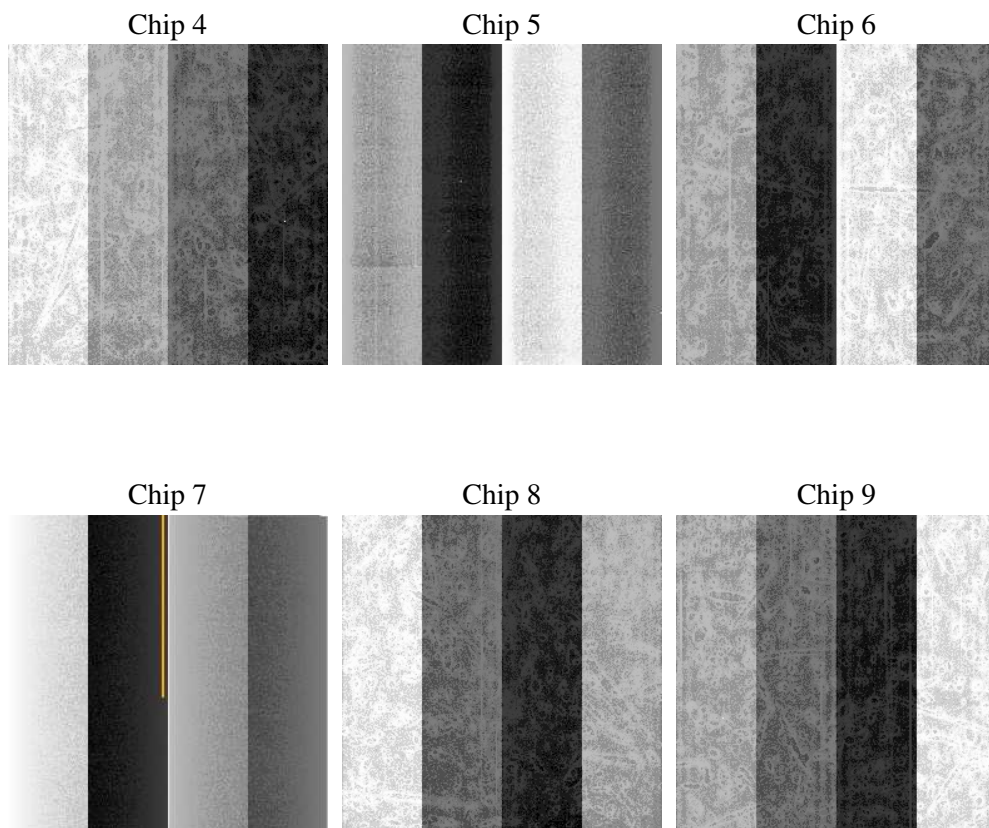
## 2 OBI

### 2.1 OBI

#### 2.1.1 Images



#### 2.1.2 Bias



### 2.1.3 Parameters

obi_num	0
ascdsver	7.6.8.1
caldbver	3.2.3
date	2006-08-21T13:14:29
revision	2

sched_exp_time	0.0
ontime	6588.9549975693
ontime4	2660.888243258
ontime5	6588.9549975693
ontime6	2916.9283105135
ontime7	6588.9549975693
ontime8	2962.3025614023
ontime9	2848.8670981526
l1events	1210926

### 2.1.4 Events

	ccd 4	ccd 5	ccd 6	ccd 7	ccd 8	ccd 9
level 1 events	130301	305657	148975	328104	155133	142756
rejected events	21025	51043	20758	44776	23850	21756
rejected %	16%	16%	13%	13%	15%	15%

	ccd 4	ccd 5	ccd 6	ccd 7	ccd 8	ccd 9
grade 0 events	63196	34818	69710	52426	71926	66535
	48%	11%	46%	15%	46%	46%
grade 1 events	489	387	373	117	336	374
	0%	0%	0%	0%	0%	0%
grade 2 events	17293	118885	22073	84843	22892	20754
	13%	38%	14%	25%	14%	14%
grade 3 events	7358	8962	7822	21181	8507	7846
	5%	2%	5%	6%	5%	5%
grade 4 events	7361	8621	7917	21026	8539	7549
	5%	2%	5%	6%	5%	5%
grade 5 events	1316	5728	1433	5902	1612	1537
	1%	1%	0%	1%	1%	1%
grade 6 events	14068	83328	20695	103852	19419	18316
	10%	27%	13%	31%	12%	12%
grade 7 events	19220	44928	18952	38757	21902	19845
	14%	14%	12%	11%	14%	13%

## 2.2 Compared Parameters

Parameter	Planned	Actual	Parameter	Planned	Actual
Instrument	ACIS	ACIS	Obspar format version number	6	6
Detector	ACIS-456789	ACIS-456789	Obspar file type	PREDICTED	ACTUAL
Grating	NONE	NONE	Obspar update status	NONE	UPDATED
Data mode	FAINT	FAINT	On-chip summing requested	N	N
Observation mode	SECONDARY	SECONDARY	Subarray requested	NONE	NONE
Pointing RA	0	159.3638313956933	Alternating exposures requested	N	N
Pointing Dec	0	61.27730102070036	Primary exposure time	0.000000	3.2
Pointing Roll	0.0	199.6836152220829			
SIM focus pos (mm)	-0.684267	-1.038866356238299			
SIM defocus (mm)	0	0.4944702831659975			
SIM translation stage pos (mm)	-190.132523	250.466033080201			
SIM translation stage offset (mm)	0	-0.01005468664627074			
Observation start time	164264086.56466	164264085.53997			
Observation start date	2003-03-17T04:54:47	2003-03-17T04:54:45			
Observation end time	164291771.815826	164291770.79113			
Observation end date	2003-03-17T12:36:12	2003-03-17T12:36:10			
Read mode	TIMED	TIMED			

## 2.3 Aspect



## **2.4 Star Slots**

## **2.5 FID Slots**



## A Summary

### A.1 Status

V&V Scientist	Beth Sundheim
V&V Date (YYYY-MM-DD)	2006.08.21
V&V Edition	1
V&V Disposition and Status	OK
V&V Charge Time	6.58831657

### A.2 Comments