

V&V Reference Report

L2 ASCDS Version : 7.6.8

Observation 60808 - L2 Version 001
Chandra X-Ray Center

L2 Processing Date : Jul 26 2006

Contents

1	Front	2
2	OBI	3
2.1	OBI	3
2.1.1	Images	3
2.1.2	Bias	3
2.1.3	Parameters	4
2.1.4	Events	4
2.2	Compared Parameters	5
2.3	Aspect	6
2.4	Star Slots	8
2.5	FID Slots	8
A	Summary	9
A.1	Status	9
A.2	Comments	9

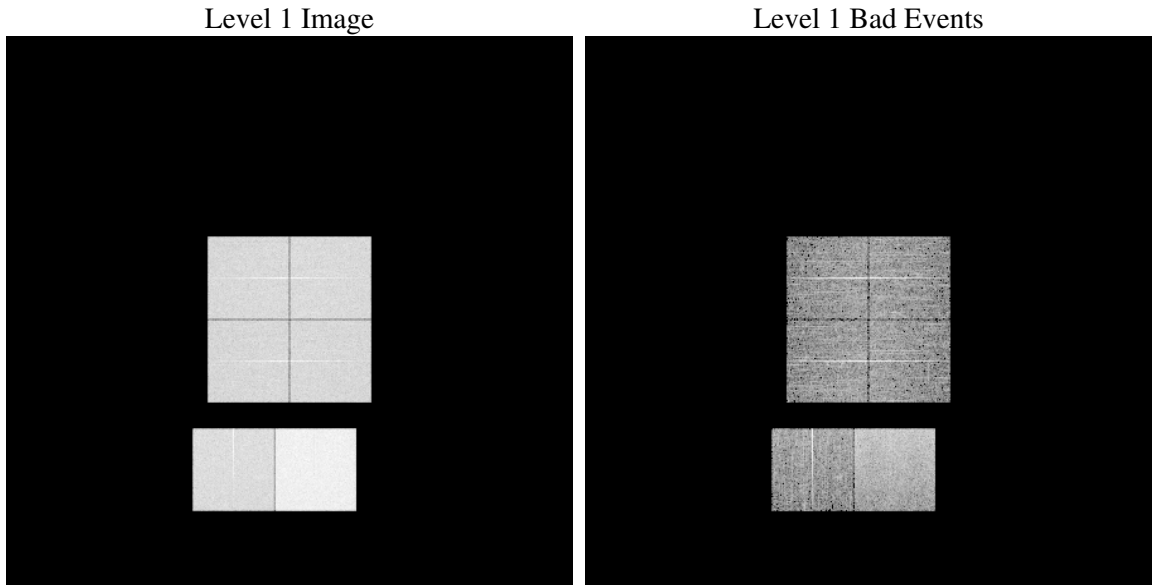
1 Front

seq_num	
obs_id	60808
title	ACIS-012367 diagnostics
observer	CHANDRA engineering request/realtime commanding
object	
dtcycle	0
cycle	P
ra_targ	0.0
dec_targ	0.0
ra_nom	226.99756760605
dec_nom	-39.971457928454
roll_nom	60.847487936461
revision	2
ontime	8463.8732534349
livetime	8356.6985939673
ontime0	4749.7587529123
ontime1	4856.7525293529
ontime2	4471.1151188314
ontime3	4542.25263381
ontime6	4967.0284744799
ontime7	8463.8732534349
l2events	1272125

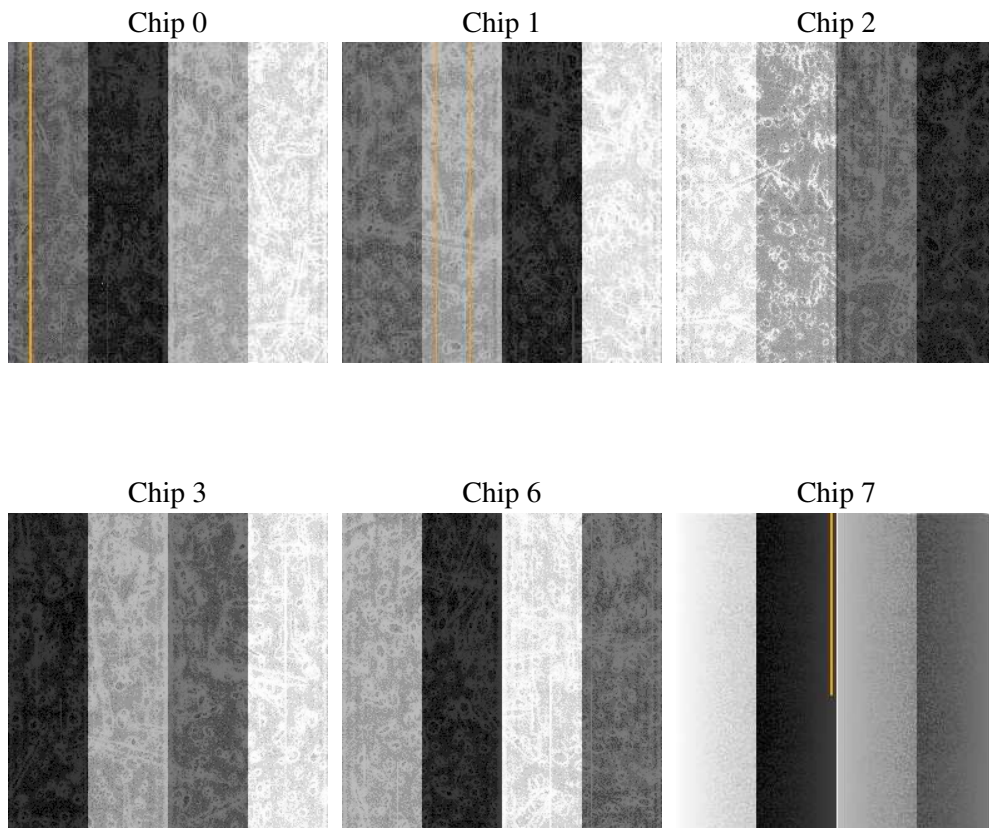
2 OBI

2.1 OBI

2.1.1 Images



2.1.2 Bias



2.1.3 Parameters

obi_num	0
ascdsver	7.6.8
caldbver	3.2.2
date	2006-07-26T04:45:36
revision	2

sched_exp_time	0.0
ontime	8465.5001065731
ontime0	4751.3445660472
ontime1	4858.2973024845
ontime2	4472.6188519597
ontime3	4543.9205269516
ontime6	4968.4911676347
ontime7	8465.5001065731
l1events	1544881

2.1.4 Events

	ccd 0	ccd 1	ccd 2	ccd 3	ccd 6	ccd 7
level 1 events	223757	229594	215860	218912	247005	409753
rejected events	29833	30823	30990	30703	33023	58462
rejected %	13%	13%	14%	14%	13%	14%

	ccd 0	ccd 1	ccd 2	ccd 3	ccd 6	ccd 7
grade 0 events	106708	109549	104025	106270	116764	63032
	47%	47%	48%	48%	47%	15%
grade 1 events	594	510	602	588	525	157
	0%	0%	0%	0%	0%	0%
grade 2 events	34001	35199	31196	31919	36915	106091
	15%	15%	14%	14%	14%	25%
grade 3 events	12599	12615	12038	12322	13289	26024
	5%	5%	5%	5%	5%	6%
grade 4 events	12527	12550	11990	12214	13089	25340
	5%	5%	5%	5%	5%	6%
grade 5 events	2143	2162	1972	2156	2392	7550
	0%	0%	0%	0%	0%	1%
grade 6 events	28089	28858	25621	25636	33925	130952
	12%	12%	11%	11%	13%	31%
grade 7 events	27096	28151	28416	27807	30106	50607
	12%	12%	13%	12%	12%	12%

2.2 Compared Parameters

Parameter	Planned	Actual	Parameter	Planned	Actual
Instrument	ACIS	ACIS	Obspar format version number	6	6
Detector	ACIS-012367	ACIS-012367	Obspar file type	PREDICTED	ACTUAL
Grating	NONE	NONE	Obspar update status	NONE	UPDATED
Data mode	FAINT	FAINT	On-chip summing requested	N	N
Observation mode	SECONDARY	SECONDARY	Subarray requested	NONE	NONE
Pointing RA	0	226.9975676060536	Alternating exposures requested	N	N
Pointing Dec	0	-39.97145792845419	Primary exposure time	0.000000	3.2
Pointing Roll	0.0	60.84748793646084			
SIM focus pos (mm)	-0.782348	-1.038866356238299			
SIM defocus (mm)	0	0.4944702831659975			
SIM translation stage pos (mm)	-233.592463	250.466033080201			
SIM translation stage offset (mm)	0	-0.01005468664627074			
Observation start time	164291771.815826	164291770.79113			
Observation start date	2003-03-17T12:36:12	2003-03-17T12:36:10			
Observation end time	164317265.6169	164317264.59221			
Observation end date	2003-03-17T19:41:06	2003-03-17T19:41:04			
Read mode	TIMED	TIMED			

2.3 Aspect

2.4 Star Slots

2.5 FID Slots

A Summary

A.1 Status

V&V Scientist	Jen Lauer
V&V Date (YYYY-MM-DD)	2006.07.26
V&V Edition	1
V&V Disposition and Status	OK
V&V Charge Time	8.46387325

A.2 Comments