

V&V Reference Report

L2 ASCDS Version : 7.6.8

Observation 60803 - L2 Version 001
Chandra X-Ray Center

L2 Processing Date : Jul 26 2006

Contents

1	Front	2
2	OBI	3
2.1	OBI	3
2.1.1	Images	3
2.1.2	Bias	3
2.1.3	Parameters	4
2.1.4	Events	4
2.2	Compared Parameters	5
2.3	Aspect	6
2.4	Star Slots	8
2.5	FID Slots	8
A	Summary	9
A.1	Status	9
A.2	Comments	9

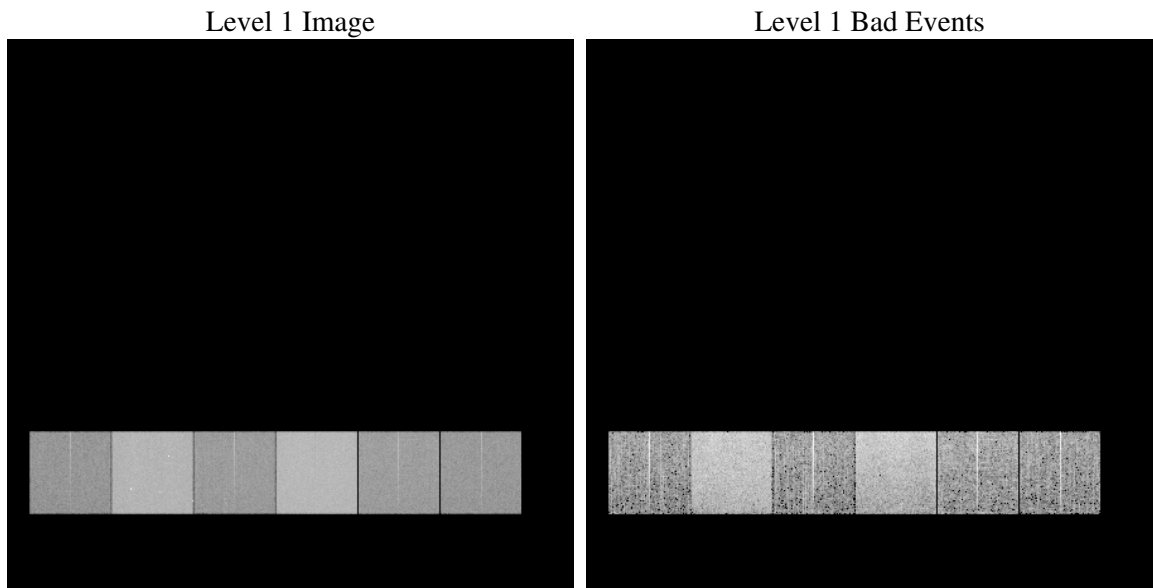
1 Front

seq_num	
obs_id	60803
title	ACIS-456789 diagnostics
observer	CHANDRA engineering request/realtime commanding
object	
dtcycle	0
cycle	P
ra_targ	0.0
dec_targ	0.0
ra_nom	130.3261500351
dec_nom	-30.517506230983
roll_nom	289.22541047691
revision	2
ontime	7785.501019448
livetime	7686.9163176739
ontime4	3232.0482992828
ontime5	7782.3010493219
ontime6	3569.072848022
ontime7	7785.501019448
ontime8	3692.313282162
ontime9	3406.8989039063
l2events	1149296

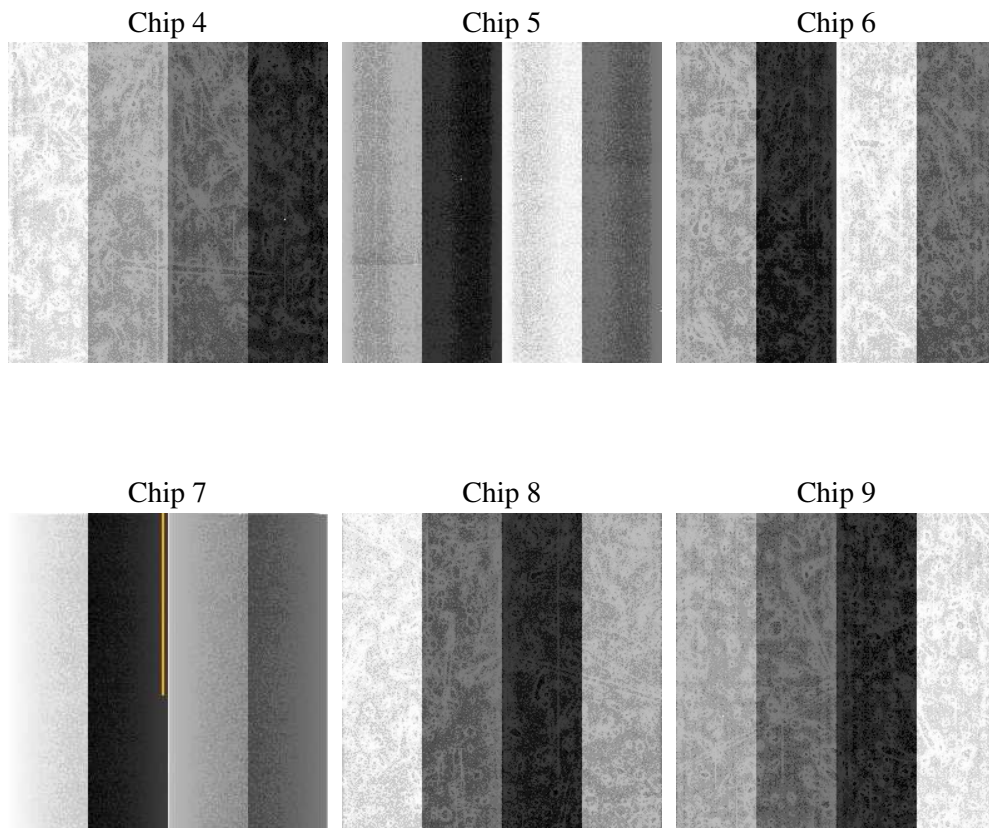
2 OBI

2.1 OBI

2.1.1 Images



2.1.2 Bias



2.1.3 Parameters

obi_num	0
ascdsver	7.6.8
caldsver	3.2.2
date	2006-07-26T06:01:24
revision	2

sched_exp_time	0.0
ontime	7788.1266178787
ontime4	3234.5507777035
ontime5	7784.8856077492
ontime6	3571.616366446
ontime7	7788.1266178787
ontime8	3694.7747206092
ontime9	3409.5655423403
l1events	1421726

2.1.4 Events

	ccd 4	ccd 5	ccd 6	ccd 7	ccd 8	ccd 9
level 1 events	154471	350270	180541	380685	189321	166438
rejected events	25488	59370	26709	53201	29168	24830
rejected %	16%	16%	14%	13%	15%	14%

	ccd 4	ccd 5	ccd 6	ccd 7	ccd 8	ccd 9
grade 0 events	74674	37215	84188	60735	88257	78261
	48%	10%	46%	15%	46%	47%
grade 1 events	542	116	398	136	459	450
	0%	0%	0%	0%	0%	0%
grade 2 events	20795	136706	26718	97474	27804	24259
	13%	39%	14%	25%	14%	14%
grade 3 events	8603	10466	9427	25071	10348	8879
	5%	2%	5%	6%	5%	5%
grade 4 events	8483	10314	9537	24359	10207	8893
	5%	2%	5%	6%	5%	5%
grade 5 events	1516	6584	1846	6866	2064	1835
	0%	1%	1%	1%	1%	1%
grade 6 events	16566	96537	24121	120010	23675	21464
	10%	27%	13%	31%	12%	12%
grade 7 events	23292	52332	24306	46034	26507	22397
	15%	14%	13%	12%	14%	13%

2.2 Compared Parameters

Parameter	Planned	Actual	Parameter	Planned	Actual
Instrument	ACIS	ACIS	Obspar format version number	6	6
Detector	ACIS-456789	ACIS-456789	Obspar file type	PREDICTED	ACTUAL
Grating	NONE	NONE	Obspar update status	NONE	UPDATED
Data mode	FAINT	FAINT	On-chip summing requested	N	N
Observation mode	SECONDARY	SECONDARY	Subarray requested	NONE	NONE
Pointing RA	0	130.3261500350954	Alternating exposures requested	N	N
Pointing Dec	0	-30.51750623098281	Primary exposure time	0.000000	3.2
Pointing Roll	0.0	289.2254104769113			
SIM focus pos (mm)	-0.684267	-0.6828225247311905			
SIM defocus (mm)	0	0.8505141146731063			
SIM translation stage pos (mm)	-190.132523	250.466033080201			
SIM translation stage offset (mm)	0	-0.01005468664627074			
Observation start time	164947173.243509	164947172.21875			
Observation start date	2003-03-25T02:39:33	2003-03-25T02:39:32			
Observation end time	164958975.094007	164958974.06925			
Observation end date	2003-03-25T05:56:15	2003-03-25T05:56:14			
Read mode	TIMED	TIMED			

2.3 Aspect

2.4 Star Slots

2.5 FID Slots

A Summary

A.1 Status

V&V Scientist	Jen Lauer
V&V Date (YYYY-MM-DD)	2006.07.26
V&V Edition	1
V&V Disposition and Status	OK
V&V Charge Time	7.78550101

A.2 Comments