

# V&V Reference Report

## L2 ASCDS Version : 8.4.5

Observation 60798 - L2 Version 3  
Chandra X-Ray Center

L2 Processing Date : Oct 24 2012

## Contents

<b>1</b>	<b>Front</b>	<b>2</b>
<b>2</b>	<b>OBI</b>	<b>3</b>
2.1	OBI . . . . .	3
2.1.1	Images . . . . .	3
2.1.2	Bias . . . . .	3
2.1.3	Parameters . . . . .	4
2.1.4	Events . . . . .	4
2.2	Compared Parameters . . . . .	5
2.3	Star Slots . . . . .	6
2.4	FID Slots . . . . .	6
<b>A</b>	<b>Summary</b>	<b>7</b>
A.1	Status . . . . .	7
A.2	Comments . . . . .	7

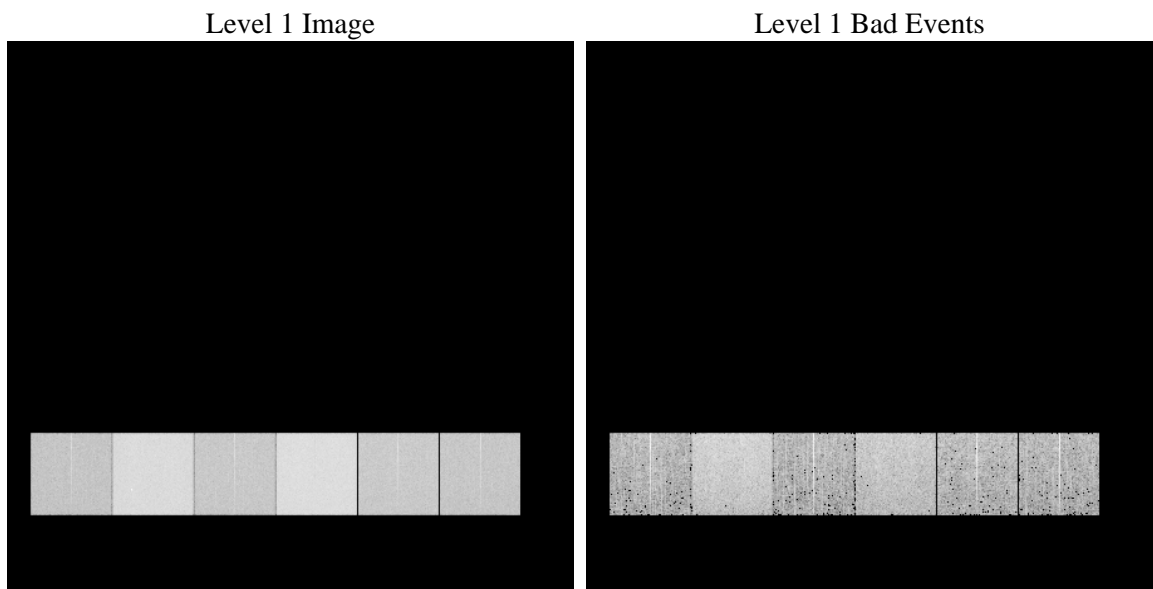
# 1 Front

seq_num	&#160	Sequence number
obs_id	60798	Observation id
title	ACIS-456789 diagnostics	Proposal title
observer	CHANDRA engineering request/realtime commanding	Principal investig
object	&#160	Source name
dtcycle	0	&#160
cycle	P	events from which exps? Prim/Second/Both
ra_targ	0.0	Observer's specified target RA [deg]
dec_targ	0.0	Observer's specified target Dec [deg]
ra_nom	189.57098689477	Nominal RA [deg]
dec_nom	28.687009906955	Nominal Dec [deg]
roll_nom	174.18009095039	Nominal Roll [deg]
revision	3	Processing version of data
ontime	8463.8315635324	Sum of GTIs [s]
livetime	8356.6574319674	Livetime [s]
ontime4	3662.3673925698	Sum of GTIs [s]
ontime5	8463.7905235291	Sum of GTIs [s]
ontime6	3986.4691105485	Sum of GTIs [s]
ontime7	8463.8315635324	Sum of GTIs [s]
ontime8	4161.4832183123	Sum of GTIs [s]
ontime9	3869.7924579382	Sum of GTIs [s]
l2events	1267596	Number of level 2 events

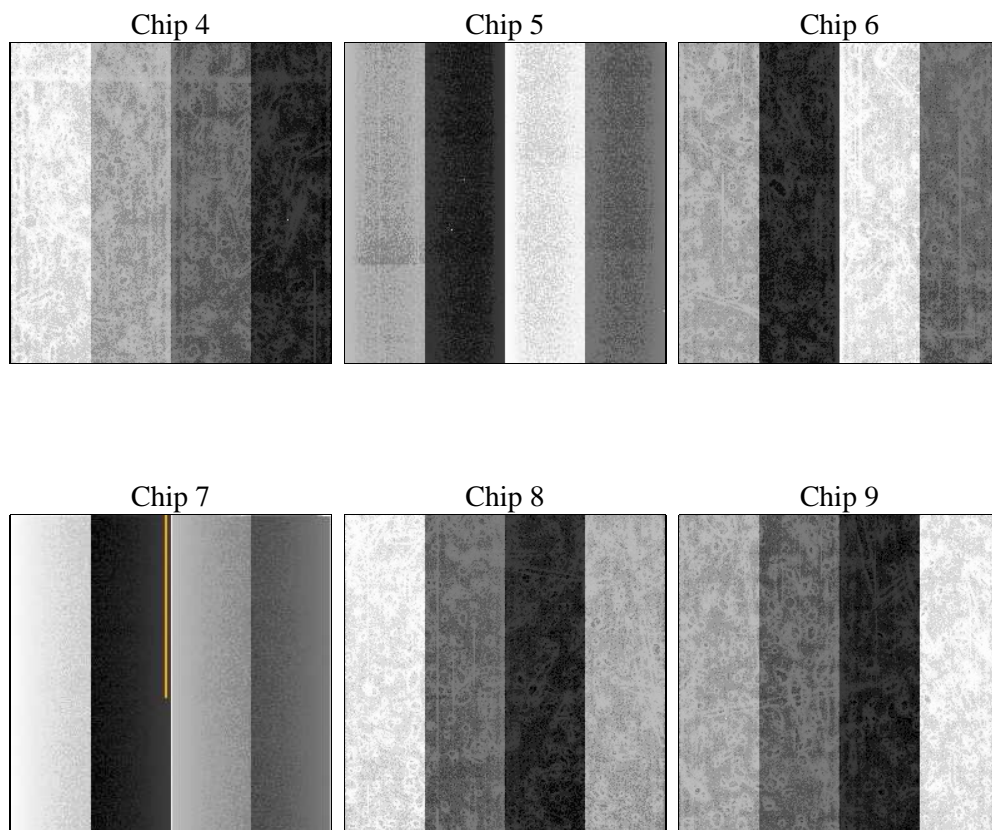
## 2 OBI

### 2.1 OBI

#### 2.1.1 Images



#### 2.1.2 Bias



### 2.1.3 Parameters

obi_num	0	Obi number	sched_exp_time	0.0	[s] Scheduled observation exposure time
ascdsver	8.4.5	Processing system revision	ontime	8463.8315635324	Sum of GTIs [s]
caldbver	4.5.2	&#160	ontime4	3662.3673925698	Sum of GTIs [s]
date	2012-10-25T01:37:10	Date and time of file creation	ontime5	8463.7905235291	Sum of GTIs [s]
revision	3	Processing version of data	ontime6	3986.4691105485	Sum of GTIs [s]
			ontime7	8463.8315635324	Sum of GTIs [s]
			ontime8	4161.4832183123	Sum of GTIs [s]
			ontime9	3869.7924579382	Sum of GTIs [s]
			l1events	1541450	Number of level 1 events

### 2.1.4 Events

	ccd 4	ccd 5	ccd 6	ccd 7	ccd 8	ccd 9		ccd 4	ccd 5	ccd 6	ccd 7	ccd 8	ccd 9
level 1 events	172594	371539	197602	405534	209158	185023	grade 0 events	83668	68732	92752	89795	98581	87595
rejected events	28634	56748	28105	44003	30711	27227		48%	18%	46%	22%	47%	47%
rejected %	16%	15%	14%	10%	14%	14%	grade 1 events	594	233	452	250	477	479
								0%	0%	0%	0%	0%	0%
							grade 2 events	22821	118061	29134	80315	30947	26918
								13%	31%	14%	19%	14%	14%
							grade 3 events	9594	18372	10322	36849	11376	9897
								5%	4%	5%	9%	5%	5%
							grade 4 events	9609	18191	10456	36154	11460	10025
								5%	4%	5%	8%	5%	5%
							grade 5 events	1698	9686	2005	8588	2285	2014
								0%	2%	1%	2%	1%	1%
							grade 6 events	18268	91543	26833	118564	26083	23361
								10%	24%	13%	29%	12%	12%
							grade 7 events	26342	46721	25648	35019	27949	24734
								15%	12%	12%	8%	13%	13%

## 2.2 Compared Parameters

Parameter	Planned	Actual	Parameter	Planned	Actual
Instrument	ACIS	ACIS	Obspar format version number	7	7
Detector	ACIS-456789	ACIS-456789	Obspar file type	PREDICTED	ACTUAL
Grating	NONE	NONE	Obspar update status	NONE	UPDATED
Data mode	FAINT	FAINT	On-chip summing requested	N	N
Observation mode	SECONDARY	SECONDARY	Subarray requested	NONE	NONE
[deg] Pointing RA	0	189.5709868947665	Alternating exposures requested	N	N
[deg] Pointing Dec	0	28.68700990695521	[s] Primary exposure time	0.000000	3.2
[deg] Pointing Roll	0.0	174.1800909503912			
[mm] SIM focus pos	-0.684267	-0.7809083437167272			
[mm] SIM defocus	0	0.7524282956875696			
[mm] SIM translation stage pos	-190.132523	250.466033080201			
[mm] SIM translation stage offset	0	-0.01005468664627074			
[s] Observation start time (MET)	165213882.354689	165213881.32999			
Observation start date	2003-03-28T04:44:42	2003-03-28T04:44:41			
[s] Observation end time (MET)	165227152.005248	165227150.98055			
Observation end date	2003-03-28T08:25:52	2003-03-28T08:25:50			
Read mode	TIMED	TIMED			

## **2.3 Star Slots**

## **2.4 FID Slots**

## A Summary

### A.1 Status

V&V Scientist	Beth Sundheim
V&V Date (YYYY-MM-DD)	2012.12.04
V&V Edition	1
V&V Disposition and Status	OK
V&V Charge Time	8.4638315635324

### A.2 Comments