

# V&V Reference Report

## L2 ASCDS Version : 7.6.8

Observation 60795 - L2 Version 001  
Chandra X-Ray Center

L2 Processing Date : Jul 30 2006

## Contents

<b>1</b>	<b>Front</b>	<b>2</b>
<b>2</b>	<b>OBI</b>	<b>3</b>
2.1	OBI . . . . .	3
2.1.1	Images . . . . .	3
2.1.2	Bias . . . . .	3
2.1.3	Parameters . . . . .	4
2.1.4	Events . . . . .	4
2.2	Compared Parameters . . . . .	5
2.3	Aspect . . . . .	6
2.4	Star Slots . . . . .	8
2.5	FID Slots . . . . .	8
<b>A</b>	<b>Summary</b>	<b>9</b>
A.1	Status . . . . .	9
A.2	Comments . . . . .	9

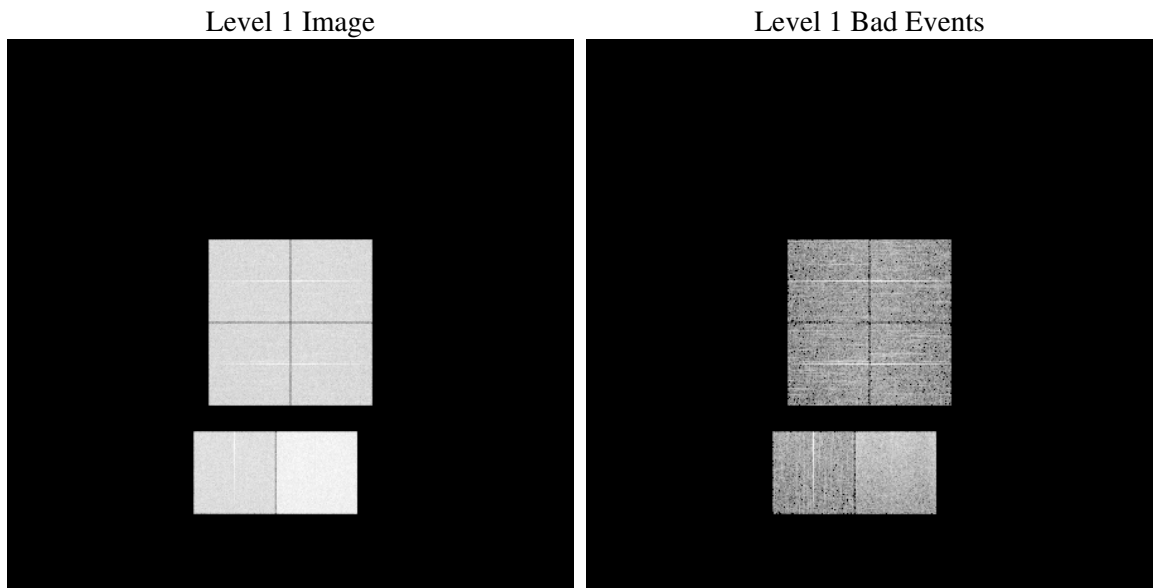
# 1 Front

seq_num	&#160
obs_id	60795
title	ACIS-012367 diagnostics
observer	CHANDRA engineering request/realtime commanding
object	&#160
dtcycle	0
cycle	P
ra_targ	0.0
dec_targ	0.0
ra_nom	89.938158263549
dec_nom	61.977667894413
roll_nom	275.87753597406
revision	2
ontime	7795.1999709606
livetime	7696.4924552224
ontime0	4344.5384508669
ontime1	4364.0252328813
ontime2	4156.6424323022
ontime3	4214.8163548708
ontime6	4603.9409150481
ontime7	7795.1999709606
l2events	1171931

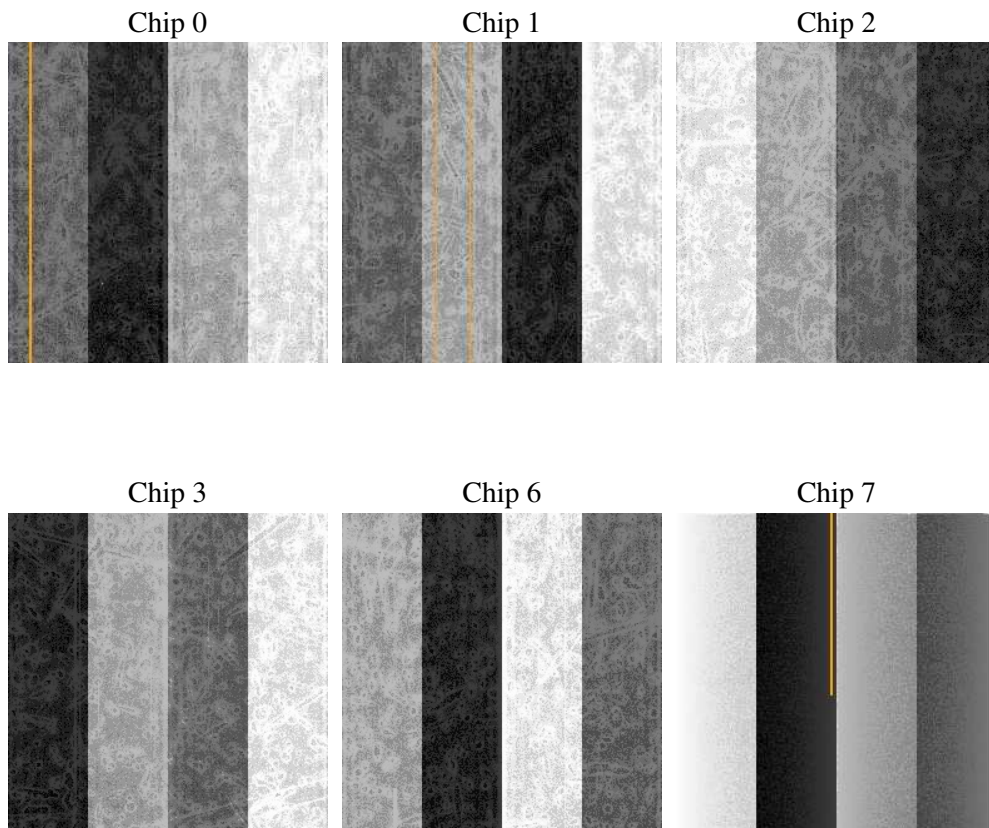
## 2 OBI

### 2.1 OBI

#### 2.1.1 Images



#### 2.1.2 Bias



### 2.1.3 Parameters

obi_num	1
ascdsver	7.6.8
caldbver	3.2.2
date	2006-07-30T11:31:53
revision	2

sched_exp_time	0.0
ontime	7797.8534385562
ontime0	4346.2167800665
ontime1	4365.6625220776
ontime2	4158.2386814952
ontime3	4216.5767640769
ontime6	4605.4961242676
ontime7	7797.8534385562
l1events	1426018

### 2.1.4 Events

	ccd 0	ccd 1	ccd 2	ccd 3	ccd 6	ccd 7
level 1 events	205401	208126	201032	204079	230328	377052
rejected events	27783	30175	28619	29439	31404	52642
rejected %	13%	14%	14%	14%	13%	13%

	ccd 0	ccd 1	ccd 2	ccd 3	ccd 6	ccd 7
grade 0 events	97769	97899	96794	98079	108151	59101
	47%	47%	48%	48%	46%	15%
grade 1 events	528	458	563	572	557	156
	0%	0%	0%	0%	0%	0%
grade 2 events	31208	31320	29059	29989	34015	97517
	15%	15%	14%	14%	14%	25%
grade 3 events	11451	11387	11287	11195	12559	24240
	5%	5%	5%	5%	5%	6%
grade 4 events	11441	11251	11167	11506	12507	23784
	5%	5%	5%	5%	5%	6%
grade 5 events	1989	1976	1878	2054	2275	6733
	0%	0%	0%	1%	0%	1%
grade 6 events	25871	26236	24106	24007	31692	119888
	12%	12%	11%	11%	13%	31%
grade 7 events	25144	27599	26178	26677	28572	45633
	12%	13%	13%	13%	12%	12%

## 2.2 Compared Parameters

Parameter	Planned	Actual	Parameter	Planned	Actual
Instrument	ACIS	ACIS	Obspar format version number	6	6
Detector	ACIS-012367	ACIS-012367	Obspar file type	PREDICTED	ACTUAL
Grating	NONE	NONE	Obspar update status	NONE	UPDATED
Data mode	FAINT	FAINT	On-chip summing requested	N	N
Observation mode	SECONDARY	SECONDARY	Subarray requested	NONE	NONE
Pointing RA	0	89.93815826354864	Alternating exposures requested	N	N
Pointing Dec	0	61.9776678944128	Primary exposure time	0.000000	3.2
Pointing Roll	0.0	275.8775359740617			
SIM focus pos (mm)	-0.782348	-0.6828225247311905			
SIM defocus (mm)	0	0.8505141146731063			
SIM translation stage pos (mm)	-233.592463	250.466033080201			
SIM translation stage offset (mm)	0	-0.01005468664627074			
Observation start time	165396246.262394	165396245.23768			
Observation start date	2003-03-30T07:24:06	2003-03-30T07:24:05			
Observation end time	165407363.412863	165407362.38815			
Observation end date	2003-03-30T10:29:23	2003-03-30T10:29:22			
Read mode	TIMED	TIMED			

## 2.3 Aspect



## **2.4 Star Slots**

## **2.5 FID Slots**



## A Summary

### A.1 Status

V&V Scientist	Jen Lauer
V&V Date (YYYY-MM-DD)	2006.07.30
V&V Edition	1
V&V Disposition and Status	OK
V&V Charge Time	7.79519997

### A.2 Comments