

V&V Reference Report

L2 ASCDS Version : 7.6.8

Observation 60792 - L2 Version 001
Chandra X-Ray Center

L2 Processing Date : Jul 30 2006

Contents

1	Front	2
2	OBI	3
2.1	OBI	3
2.1.1	Images	3
2.1.2	Bias	3
2.1.3	Parameters	4
2.1.4	Events	4
2.2	Compared Parameters	5
2.3	Aspect	6
2.4	Star Slots	8
2.5	FID Slots	8
A	Summary	9
A.1	Status	9
A.2	Comments	9

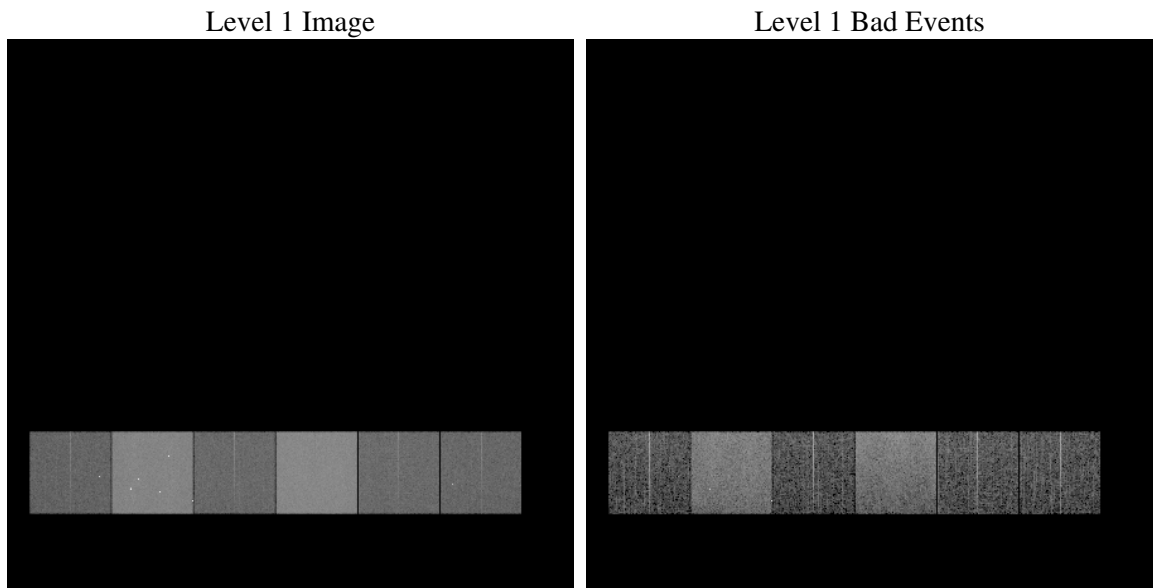
1 Front

seq_num	
obs_id	60792
title	ACIS-456789 diagnostics
observer	CHANDRA engineering request/realtime commanding
object	
dtcycle	0
cycle	P
ra_targ	0.0
dec_targ	0.0
ra_nom	269.9831336227
dec_nom	-14.976450171517
roll_nom	91.825139494473
revision	2
ontime	7788.7999709845
livetime	7690.1734958996
ontime4	2935.1314201951
ontime5	7785.5590007007
ontime6	3251.4229157865
ontime7	7788.7999709845
ontime8	3301.4078583717
ontime9	3161.8386752307
l2events	1144456

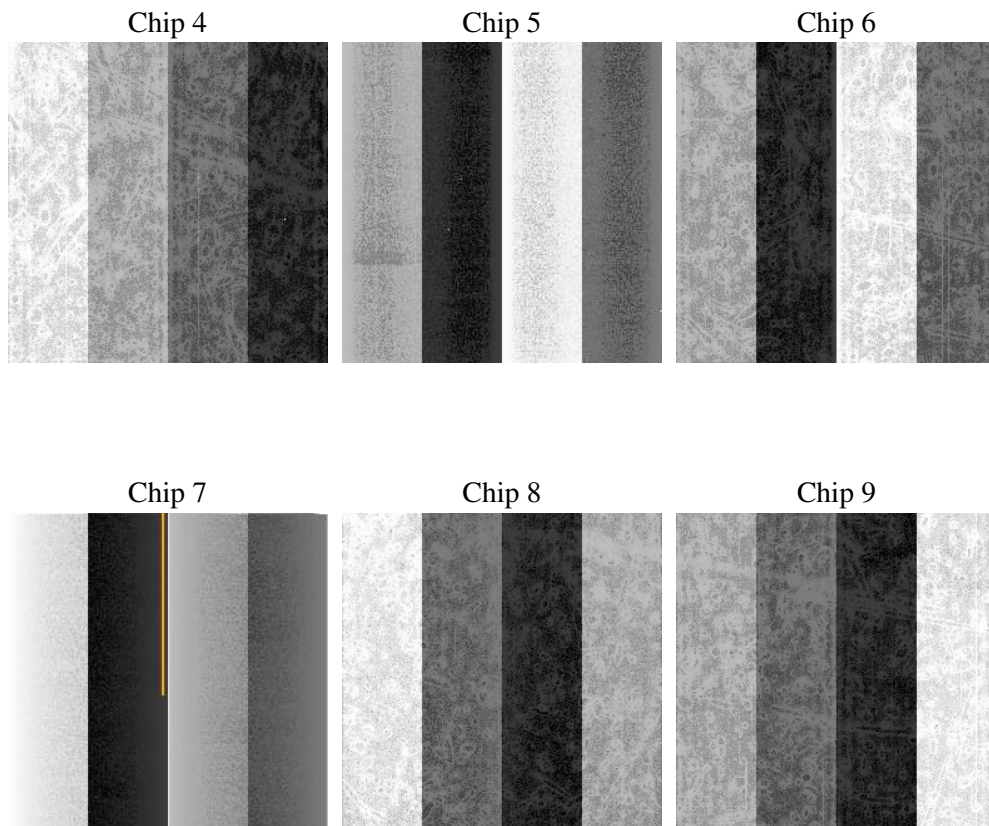
2 OBI

2.1 OBI

2.1.1 Images



2.1.2 Bias



2.1.3 Parameters

obi_num	1
ascdsver	7.6.8
caldbver	3.2.2
date	2006-07-30T11:38:48
revision	2

sched_exp_time	0.0
ontime	7791.3760885
ontime4	2936.3783886433
ontime5	7788.1351182163
ontime6	3253.9990333021
ontime7	7791.3760885
ontime8	3302.6137868464
ontime9	3163.2498036921
l1events	1425251

2.1.4 Events

	ccd 4	ccd 5	ccd 6	ccd 7	ccd 8	ccd 9
level 1 events	148318	369286	171251	394690	178998	162708
rejected events	24162	62543	24239	57195	26816	24874
rejected %	16%	16%	14%	14%	14%	15%

	ccd 4	ccd 5	ccd 6	ccd 7	ccd 8	ccd 9
grade 0 events	71895	39461	79414	58708	83117	76139
	48%	10%	46%	14%	46%	46%
grade 1 events	584	579	418	156	467	530
	0%	0%	0%	0%	0%	0%
grade 2 events	19238	145155	25274	103732	26231	22979
	12%	39%	14%	26%	14%	14%
grade 3 events	8285	9608	9122	24044	9529	8546
	5%	2%	5%	6%	5%	5%
grade 4 events	8218	9286	9029	23543	9661	8768
	5%	2%	5%	5%	5%	5%
grade 5 events	1499	6517	1757	7091	1988	1664
	1%	1%	1%	1%	1%	1%
grade 6 events	16520	103242	24173	127468	23644	21402
	11%	27%	14%	32%	13%	13%
grade 7 events	22079	55438	22064	49948	24361	22680
	14%	15%	12%	12%	13%	13%

2.2 Compared Parameters

Parameter	Planned	Actual	Parameter	Planned	Actual
Instrument	ACIS	ACIS	Obspar format version number	6	6
Detector	ACIS-456789	ACIS-456789	Obspar file type	PREDICTED	ACTUAL
Grating	NONE	NONE	Obspar update status	NONE	UPDATED
Data mode	FAINT	FAINT	On-chip summing requested	N	N
Observation mode	SECONDARY	SECONDARY	Subarray requested	NONE	NONE
Pointing RA	0	269.9831336226972	Alternating exposures requested	N	N
Pointing Dec	0	-14.97645017151715	Primary exposure time	0.000000	3.2
Pointing Roll	0.0	91.82513949447269			
SIM focus pos (mm)	-0.684267	-0.7809083437167272			
SIM defocus (mm)	0	0.7524282956875696			
SIM translation stage pos (mm)	-190.132523	250.466033080201			
SIM translation stage offset (mm)	0	-0.01005468664627074			
Observation start time	165632471.872358	165632470.84764			
Observation start date	2003-04-02T01:01:12	2003-04-02T01:01:10			
Observation end time	165642816.172794	165642815.14808			
Observation end date	2003-04-02T03:53:36	2003-04-02T03:53:35			
Read mode	TIMED	TIMED			

2.3 Aspect

2.4 Star Slots

2.5 FID Slots

A Summary

A.1 Status

V&V Scientist	Jen Lauer
V&V Date (YYYY-MM-DD)	2006.07.30
V&V Edition	1
V&V Disposition and Status	OK
V&V Charge Time	7.78879997

A.2 Comments

The ACIS focal plane temperature was above calibration limits for the entire observation.