

# V&V Reference Report

## L2 ASCDS Version : 8.4.5

Observation 60789 - L2 Version 3  
Chandra X-Ray Center

L2 Processing Date : Oct 26 2012

## Contents

<b>1</b>	<b>Front</b>	<b>2</b>
<b>2</b>	<b>OBI</b>	<b>3</b>
2.1	OBI . . . . .	3
2.1.1	Images . . . . .	3
2.1.2	Bias . . . . .	3
2.1.3	Parameters . . . . .	4
2.1.4	Events . . . . .	4
2.2	Compared Parameters . . . . .	5
2.3	Star Slots . . . . .	6
2.4	FID Slots . . . . .	6
<b>A</b>	<b>Summary</b>	<b>7</b>
A.1	Status . . . . .	7
A.2	Comments . . . . .	7

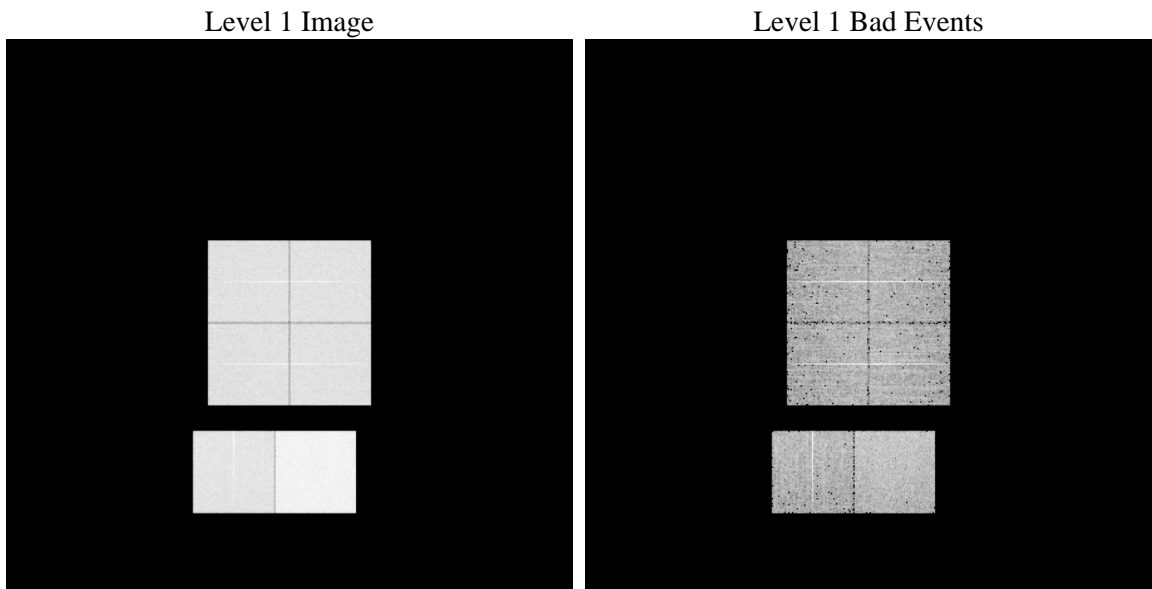
# 1 Front

seq_num	&#160	Sequence number
obs_id	60789	Observation id
title	ACIS-012367 diagnostics	Proposal title
observer	CHANDRA engineering request/realtime commanding	Principal investig
object	&#160	Source name
dtcycle	0	&#160
cycle	P	events from which exps? Prim/Second/Both
ra_targ	0.0	Observer's specified target RA [deg]
dec_targ	0.0	Observer's specified target Dec [deg]
ra_nom	269.98299036243	Nominal RA [deg]
dec_nom	-14.976598642098	Nominal Dec [deg]
roll_nom	92.213482812846	Nominal Roll [deg]
revision	3	Processing version of data
ontime	7794.8794686794	Sum of GTIs [s]
livetime	7696.1760113341	Livetime [s]
ontime0	4336.493661046	Sum of GTIs [s]
ontime1	4385.2903150022	Sum of GTIs [s]
ontime2	4180.9255253971	Sum of GTIs [s]
ontime3	4177.9895555377	Sum of GTIs [s]
ontime6	4573.1862650216	Sum of GTIs [s]
ontime7	7794.8794686794	Sum of GTIs [s]
l2events	1180316	Number of level 2 events

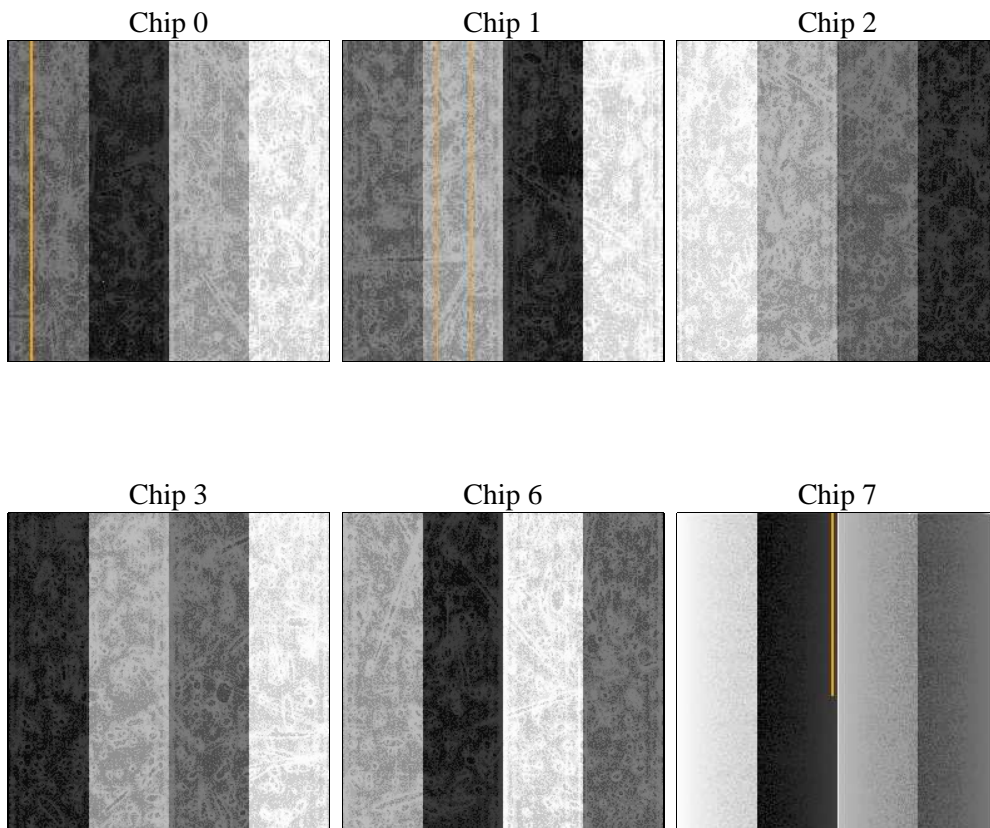
## 2 OBI

### 2.1 OBI

#### 2.1.1 Images



#### 2.1.2 Bias



### 2.1.3 Parameters

obi_num	1	Obi number	sched_exp_time	0.0	[s] Scheduled observation exposure time
ascdsver	8.4.5	Processing system revision	ontime	7794.8794686794	Sum of GTIs [s]
caldsver	4.5.2	&#160	ontime0	4336.493661046	Sum of GTIs [s]
date	2012-10-26T11:54:32	Date and time of file creation	ontime1	4385.2903150022	Sum of GTIs [s]
revision	3	Processing version of data	ontime2	4180.9255253971	Sum of GTIs [s]
			ontime3	4177.9895555377	Sum of GTIs [s]
			ontime6	4573.1862650216	Sum of GTIs [s]
			ontime7	7794.8794686794	Sum of GTIs [s]
			l1events	1426739	Number of level 1 events

### 2.1.4 Events

	ccd 0	ccd 1	ccd 2	ccd 3	ccd 6	ccd 7		ccd 0	ccd 1	ccd 2	ccd 3	ccd 6	ccd 7
level 1 events	205766	208789	201689	204377	229550	376568	grade 0 events	98030	99078	96976	97394	107632	83186
rejected events	28483	29211	29201	31250	32282	41872		47%	47%	48%	47%	46%	22%
rejected %	13%	13%	14%	15%	14%	11%	grade 1 events	532	473	575	553	497	254
								0%	0%	0%	0%	0%	0%
							grade 2 events	30439	31902	28951	29617	33916	73213
								14%	15%	14%	14%	14%	19%
							grade 3 events	11535	11577	11206	11201	12287	33686
								5%	5%	5%	5%	5%	8%
							grade 4 events	11379	11116	11247	11272	12245	32944
								5%	5%	5%	5%	5%	8%
							grade 5 events	2056	1985	1891	2064	2316	7932
								0%	0%	0%	1%	1%	2%
							grade 6 events	25900	26044	24108	23781	31327	111807
								12%	12%	11%	11%	13%	29%
							grade 7 events	25895	26614	26735	28495	29330	33546
								12%	12%	13%	13%	12%	8%

## 2.2 Compared Parameters

Parameter	Planned	Actual
Instrument	ACIS	ACIS
Detector	ACIS-012367	ACIS-012367
Grating	NONE	NONE
Data mode	FAINT	FAINT
Observation mode	SECONDARY	SECONDARY
[deg] Pointing RA	0	269.9829903624285
[deg] Pointing Dec	0	-14.97659864209821
[deg] Pointing Roll	0.0	92.21348281284641
[mm] SIM focus pos	-0.782348	-0.7809083437167272
[mm] SIM defocus	0	0.7524282956875696
[mm] SIM translation stage pos	-233.592463	250.466033080201
[mm] SIM translation stage offset	0	-0.01005468664627074
[s] Observation start time (MET)	165854829.23173	165854828.20702
Observation start date	2003-04-04T14:47:09	2003-04-04T14:47:08
[s] Observation end time (MET)	165864601.582142	165864600.55743
Observation end date	2003-04-04T17:30:02	2003-04-04T17:30:00
Read mode	TIMED	TIMED

Parameter	Planned	Actual
Obspar format version number	7	7
Obspar file type	PREDICTED	ACTUAL
Obspar update status	NONE	UPDATED
On-chip summing requested	N	N
Subarray requested	NONE	NONE
Alternating exposures requested	N	N
[s] Primary exposure time	0.000000	3.2

## 2.3 Star Slots

## 2.4 FID Slots

## A Summary

### A.1 Status

V&V Scientist	Beth Sundheim
V&V Date (YYYY-MM-DD)	2012.12.04
V&V Edition	1
V&V Disposition and Status	OK
V&V Charge Time	7.7948794686794

### A.2 Comments