

V&V Reference Report

L2 ASCDS Version : 7.6.8

Observation 60789 - L2 Version 001
Chandra X-Ray Center

L2 Processing Date : Jul 30 2006

Contents

1	Front	2
2	OBI	3
2.1	OBI	3
2.1.1	Images	3
2.1.2	Bias	3
2.1.3	Parameters	4
2.1.4	Events	4
2.2	Compared Parameters	5
2.3	Aspect	6
2.4	Star Slots	8
2.5	FID Slots	8
A	Summary	9
A.1	Status	9
A.2	Comments	9

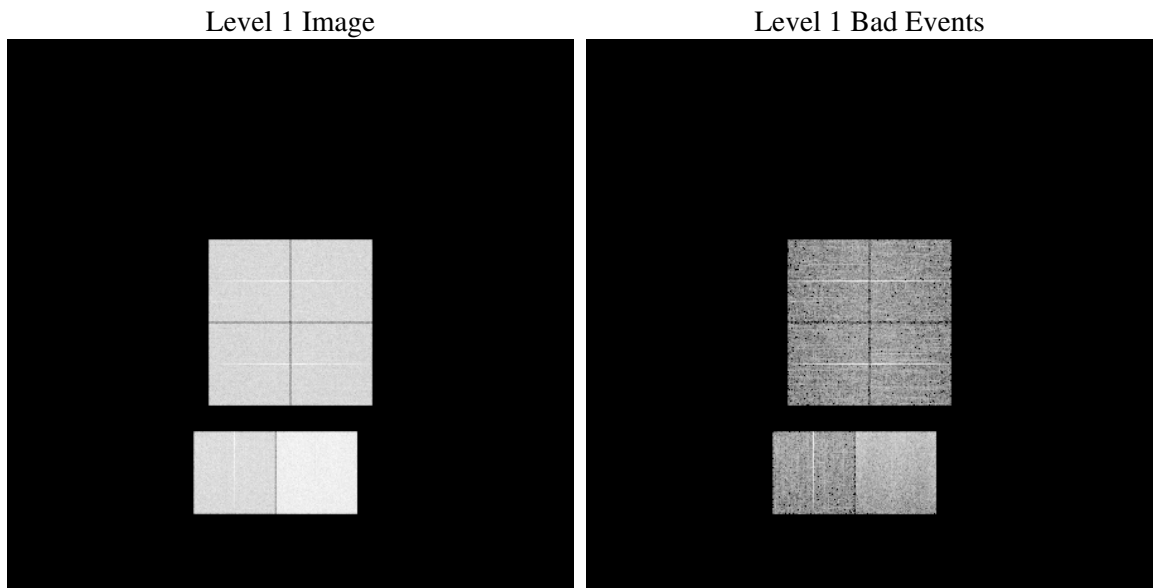
1 Front

seq_num	
obs_id	60789
title	ACIS-012367 diagnostics
observer	CHANDRA engineering request/realtime commanding
object	
dtcycle	0
cycle	P
ra_targ	0.0
dec_targ	0.0
ra_nom	269.98299035225
dec_nom	-14.976598640764
roll_nom	92.213482805022
revision	2
ontime	7795.1999709606
livetime	7696.4924552224
ontime0	4335.2552033365
ontime1	4385.69289729
ontime2	4179.7691476941
ontime3	4178.2690178156
ontime6	4573.6709272861
ontime7	7795.1999709606
l2events	1166984

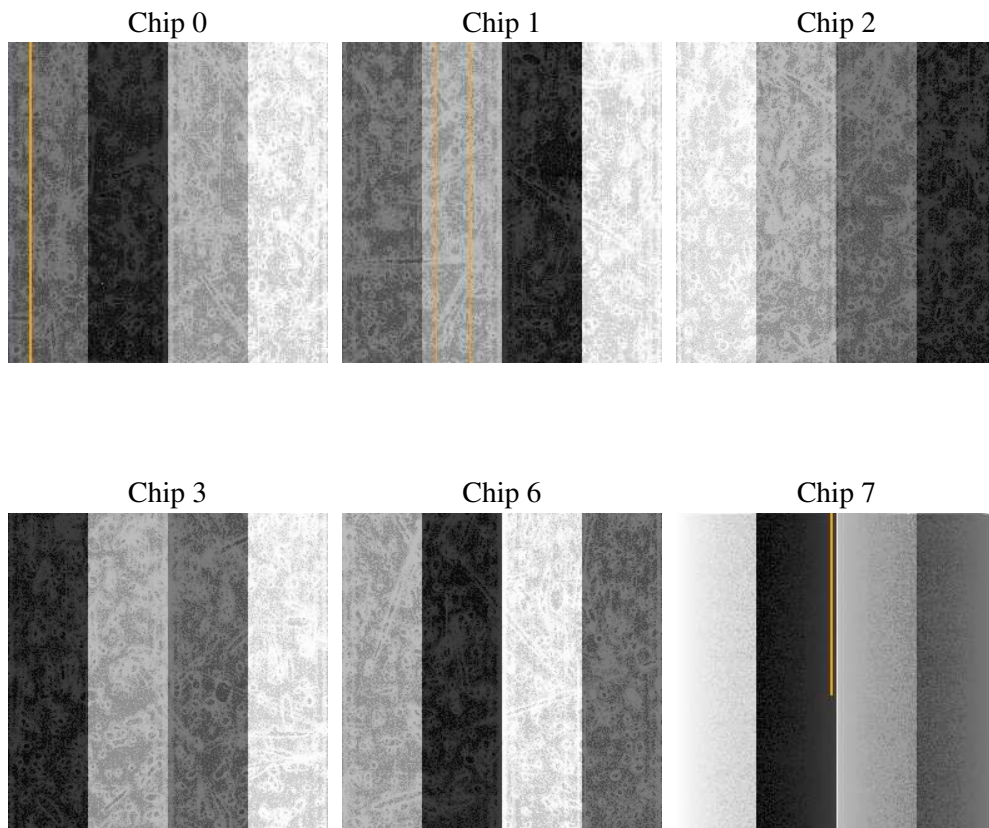
2 OBI

2.1 OBI

2.1.1 Images



2.1.2 Bias



2.1.3 Parameters

obi_num	1
ascdsver	7.6.8
caldbver	3.2.2
date	2006-07-30T11:49:10
revision	2

sched_exp_time	0.0
ontime	7797.8562390506
ontime0	4336.493661046
ontime1	4388.34916538
ontime2	4180.9255253971
ontime3	4180.9252859056
ontime6	4576.3271953762
ontime7	7797.8562390506
l1events	1426739

2.1.4 Events

	ccd 0	ccd 1	ccd 2	ccd 3	ccd 6	ccd 7
level 1 events	205766	208789	201689	204377	229550	376568
rejected events	28488	29075	29213	31114	32150	55726
rejected %	13%	13%	14%	15%	14%	14%

	ccd 0	ccd 1	ccd 2	ccd 3	ccd 6	ccd 7
grade 0 events	97997	99043	96940	97362	107564	55478
	47%	47%	48%	47%	46%	14%
grade 1 events	528	472	570	550	491	148
	0%	0%	0%	0%	0%	0%
grade 2 events	30472	31937	28987	29649	33985	98889
	14%	15%	14%	14%	14%	26%
grade 3 events	11529	11566	11187	11193	12270	22768
	5%	5%	5%	5%	5%	6%
grade 4 events	11372	11107	11230	11259	12226	22165
	5%	5%	5%	5%	5%	5%
grade 5 events	2059	1978	1894	2059	2316	6890
	1%	0%	0%	1%	1%	1%
grade 6 events	25908	26061	24132	23800	31355	121542
	12%	12%	11%	11%	13%	32%
grade 7 events	25901	26625	26749	28505	29343	48688
	12%	12%	13%	13%	12%	12%

2.2 Compared Parameters

Parameter	Planned	Actual	Parameter	Planned	Actual
Instrument	ACIS	ACIS	Obspar format version number	6	6
Detector	ACIS-012367	ACIS-012367	Obspar file type	PREDICTED	ACTUAL
Grating	NONE	NONE	Obspar update status	NONE	UPDATED
Data mode	FAINT	FAINT	On-chip summing requested	N	N
Observation mode	SECONDARY	SECONDARY	Subarray requested	NONE	NONE
Pointing RA	0	269.9829903522493	Alternating exposures requested	N	N
Pointing Dec	0	-14.97659864076432	Primary exposure time	0.000000	3.2
Pointing Roll	0.0	92.21348280502224			
SIM focus pos (mm)	-0.782348	-0.7809083437167272			
SIM defocus (mm)	0	0.7524282956875696			
SIM translation stage pos (mm)	-233.592463	250.466033080201			
SIM translation stage offset (mm)	0	-0.01005468664627074			
Observation start time	165854829.23173	165854828.20702			
Observation start date	2003-04-04T14:47:09	2003-04-04T14:47:08			
Observation end time	165864601.582142	165864600.55743			
Observation end date	2003-04-04T17:30:02	2003-04-04T17:30:00			
Read mode	TIMED	TIMED			

2.3 Aspect

2.4 Star Slots

2.5 FID Slots

A Summary

A.1 Status

V&V Scientist	Jen Lauer
V&V Date (YYYY-MM-DD)	2006.07.30
V&V Edition	1
V&V Disposition and Status	OK
V&V Charge Time	7.79519997

A.2 Comments