

# V&V Reference Report

## L2 ASCDS Version : 7.6.8

Observation 60787 - L2 Version 001  
Chandra X-Ray Center

L2 Processing Date : Jul 30 2006

## Contents

<b>1</b>	<b>Front</b>	<b>2</b>
<b>2</b>	<b>OBI</b>	<b>3</b>
2.1	OBI . . . . .	3
2.1.1	Images . . . . .	3
2.1.2	Bias . . . . .	3
2.1.3	Parameters . . . . .	4
2.1.4	Events . . . . .	4
2.2	Compared Parameters . . . . .	5
2.3	Aspect . . . . .	6
2.4	Star Slots . . . . .	8
2.5	FID Slots . . . . .	8
<b>A</b>	<b>Summary</b>	<b>9</b>
A.1	Status . . . . .	9
A.2	Comments . . . . .	9

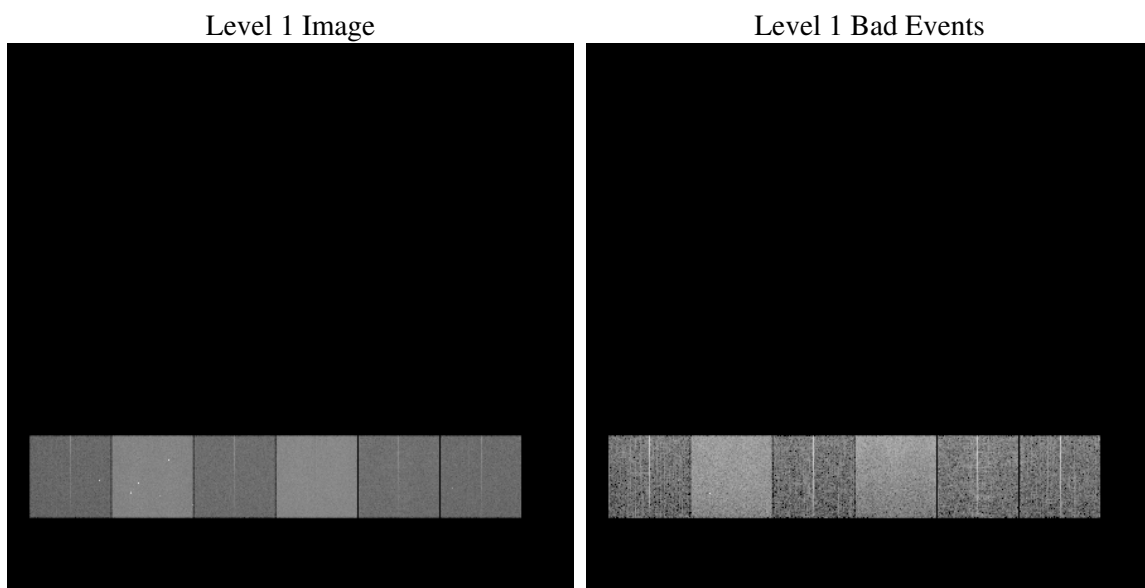
# 1 Front

seq_num	&#160
obs_id	60787
title	ACIS-456789 diagnostics
observer	CHANDRA engineering request/realtime commanding
object	&#160
dtcycle	0
cycle	P
ra_targ	0.0
dec_targ	0.0
ra_nom	224.97363597136
dec_nom	14.01280101682
roll_nom	120.48307922907
revision	2
ontime	8374.3999688029
livetime	8268.3582739397
ontime4	3562.6888398528
ontime5	8374.3999688029
ontime6	3953.7025970519
ontime7	8374.3999688029
ontime8	4042.3998843133
ontime9	3854.2169749141
l2events	1226901

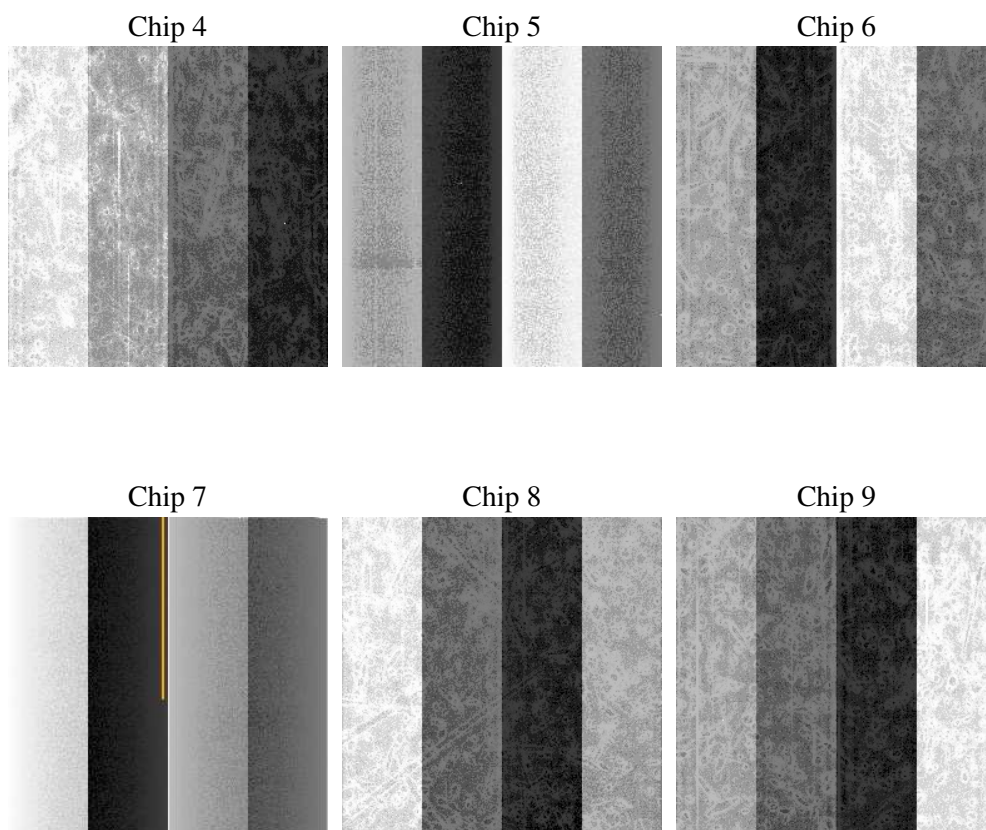
## 2 OBI

### 2.1 OBI

#### 2.1.1 Images



#### 2.1.2 Bias



### 2.1.3 Parameters

obi_num	0
ascdsver	7.6.8
caldsver	3.2.2
date	2006-07-30T12:00:29
revision	2

sched_exp_time	0.0
ontime	8462.262887001
ontime4	3591.0646911263
ontime5	8462.262887001
ontime6	3992.9507916868
ontime7	8462.262887001
ontime8	4080.4577558637
ontime9	3895.7210564911
l1events	1540330

### 2.1.4 Events

	ccd 4	ccd 5	ccd 6	ccd 7	ccd 8	ccd 9
level 1 events	168444	376354	196430	406327	206348	186427
rejected events	29124	67817	29211	60637	34140	29330
rejected %	17%	18%	14%	14%	16%	15%

	ccd 4	ccd 5	ccd 6	ccd 7	ccd 8	ccd 9
grade 0 events	81285	39699	92227	63445	95346	88172
	48%	10%	46%	15%	46%	47%
grade 1 events	573	103	465	165	461	488
	0%	0%	0%	0%	0%	0%
grade 2 events	22507	147340	29312	105513	30350	27054
	13%	39%	14%	25%	14%	14%
grade 3 events	9347	10333	10476	25767	11264	10020
	5%	2%	5%	6%	5%	5%
grade 4 events	9350	9864	10376	25791	11244	9956
	5%	2%	5%	6%	5%	5%
grade 5 events	1664	6948	1963	7443	2326	2112
	0%	1%	0%	1%	1%	1%
grade 6 events	17943	104556	26490	128725	25757	23584
	10%	27%	13%	31%	12%	12%
grade 7 events	25775	57511	25121	49478	29600	25041
	15%	15%	12%	12%	14%	13%

## 2.2 Compared Parameters

Parameter	Planned	Actual	Parameter	Planned	Actual
Instrument	ACIS	ACIS	Obspar format version number	6	6
Detector	ACIS-456789	ACIS-456789	Obspar file type	PREDICTED	ACTUAL
Grating	NONE	NONE	Obspar update status	NONE	UPDATED
Data mode	FAINT	FAINT	On-chip summing requested	N	N
Observation mode	SECONDARY	SECONDARY	Subarray requested	NONE	NONE
Pointing RA	0	224.9736359713565	Alternating exposures requested	N	N
Pointing Dec	0	14.01280101681962	Primary exposure time	0.000000	3.2
Pointing Roll	0.0	120.483079229066			
SIM focus pos (mm)	-0.684267	-0.7809083437167272			
SIM defocus (mm)	0	0.7524282956875696			
SIM translation stage pos (mm)	-190.132523	250.466033080201			
SIM translation stage offset (mm)	0	-0.01005468664627074			
Observation start time	165890659.133241	165890658.10854			
Observation start date	2003-04-05T00:44:19	2003-04-05T00:44:18			
Observation end time	165911968.884139	165911967.85944			
Observation end date	2003-04-05T06:39:29	2003-04-05T06:39:27			
Read mode	TIMED	TIMED			

## 2.3 Aspect



## **2.4 Star Slots**

## **2.5 FID Slots**



## A Summary

### A.1 Status

V&V Scientist	Jen Lauer
V&V Date (YYYY-MM-DD)	2006.07.30
V&V Edition	1
V&V Disposition and Status	OK
V&V Charge Time	8.37439996

### A.2 Comments