

V&V Reference Report

L2 ASCDS Version : 7.6.8.1

Observation 60781 - L2 Version 001
Chandra X-Ray Center

L2 Processing Date : Aug 4 2006

Contents

1	Front	2
2	OBI	3
2.1	OBI	3
2.1.1	Images	3
2.1.2	Bias	3
2.1.3	Parameters	4
2.1.4	Events	4
2.2	Compared Parameters	5
2.3	Aspect	6
2.4	Star Slots	8
2.5	FID Slots	8
A	Summary	9
A.1	Status	9
A.2	Comments	9

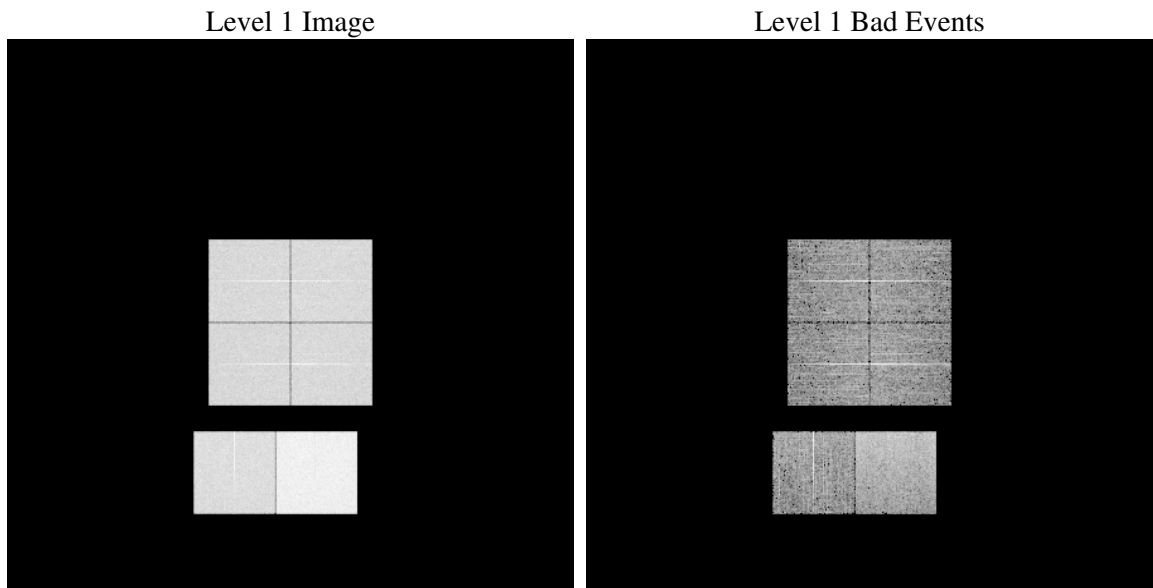
1 Front

seq_num	
obs_id	60781
title	ACIS-012367 diagnostics
observer	CHANDRA engineering request/realtime commanding
object	
dtcycle	0
cycle	P
ra_targ	0.0
dec_targ	0.0
ra_nom	225.90903480864
dec_nom	-41.672215947869
roll_nom	43.474436717355
revision	2
ontime	8463.9999684691
livetime	8356.8237044595
ontime0	4809.3577447832
ontime1	4934.5771402419
ontime2	4565.1041100025
ontime3	4682.877894491
ontime6	5114.1332557499
ontime7	8463.9999684691
l2events	1272665

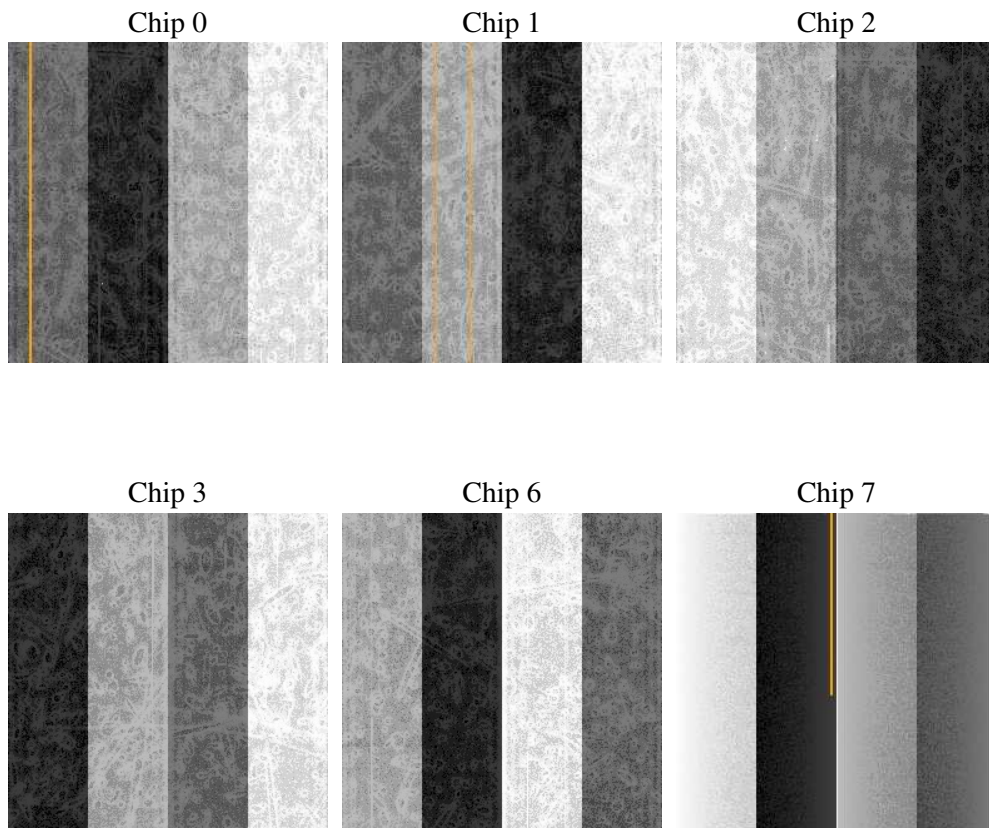
2 OBI

2.1 OBI

2.1.1 Images



2.1.2 Bias



2.1.3 Parameters

obi_num	0
ascdsver	7.6.8.1
caldbver	3.2.2
date	2006-08-05T02:29:45
revision	2

sched_exp_time	0.0
ontime	8465.5039073527
ontime0	4809.6823132336
ontime1	4936.0810791254
ontime2	4566.6080488861
ontime3	4683.284542948
ontime6	5114.3347042203
ontime7	8465.5039073527
l1events	1543702

2.1.4 Events

	ccd 0	ccd 1	ccd 2	ccd 3	ccd 6	ccd 7
level 1 events	224300	228857	216576	222147	249736	402086
rejected events	30821	30754	30738	31450	34051	54949
rejected %	13%	13%	14%	14%	13%	13%

	ccd 0	ccd 1	ccd 2	ccd 3	ccd 6	ccd 7
grade 0 events	106789	109081	104453	107653	117285	63597
	47%	47%	48%	48%	46%	15%
grade 1 events	574	495	592	636	524	135
	0%	0%	0%	0%	0%	0%
grade 2 events	33705	34987	31448	32594	37265	103949
	15%	15%	14%	14%	14%	25%
grade 3 events	12457	12592	12102	12450	13413	26109
	5%	5%	5%	5%	5%	6%
grade 4 events	12471	12685	12003	12348	13424	25579
	5%	5%	5%	5%	5%	6%
grade 5 events	2106	2264	1919	2232	2473	7276
	0%	0%	0%	1%	0%	1%
grade 6 events	28057	28758	25832	25652	34298	127903
	12%	12%	11%	11%	13%	31%
grade 7 events	28141	27995	28227	28582	31054	47538
	12%	12%	13%	12%	12%	11%

2.2 Compared Parameters

Parameter	Planned	Actual	Parameter	Planned	Actual
Instrument	ACIS	ACIS	Obspar format version number	6	6
Detector	ACIS-012367	ACIS-012367	Obspar file type	PREDICTED	ACTUAL
Grating	NONE	NONE	Obspar update status	NONE	UPDATED
Data mode	FAINT	FAINT	On-chip summing requested	N	N
Observation mode	SECONDARY	SECONDARY	Subarray requested	NONE	NONE
Pointing RA	0	225.9090348086394	Alternating exposures requested	N	N
Pointing Dec	0	-41.67221594786928	Primary exposure time	0.000000	3.2
Pointing Roll	0.0	43.47443671735516			
SIM focus pos (mm)	-0.782348	-0.7809083437167272			
SIM defocus (mm)	0	0.7524282956875696			
SIM translation stage pos (mm)	-233.592463	250.466033080201			
SIM translation stage offset (mm)	0	-0.01005468664627074			
Observation start time	166343155.652361	166343154.62764			
Observation start date	2003-04-10T06:25:56	2003-04-10T06:25:54			
Observation end time	166372983.153621	166372982.1289			
Observation end date	2003-04-10T14:43:03	2003-04-10T14:43:02			
Read mode	TIMED	TIMED			

2.3 Aspect

2.4 Star Slots

2.5 FID Slots

A Summary

A.1 Status

V&V Scientist	Beth Sundheim
V&V Date (YYYY-MM-DD)	2006.08.06
V&V Edition	1
V&V Disposition and Status	OK
V&V Charge Time	8.46399996

A.2 Comments