

V&V Reference Report

L2 ASCDS Version : 8.4.5

Observation 60770 - L2 Version 3
Chandra X-Ray Center

L2 Processing Date : Oct 26 2012

Contents

1	Front	2
2	OBI	3
2.1	OBI	3
2.1.1	Images	3
2.1.2	Bias	3
2.1.3	Parameters	4
2.1.4	Events	4
2.2	Compared Parameters	5
2.3	Star Slots	6
2.4	FID Slots	6
A	Summary	7
A.1	Status	7
A.2	Comments	7

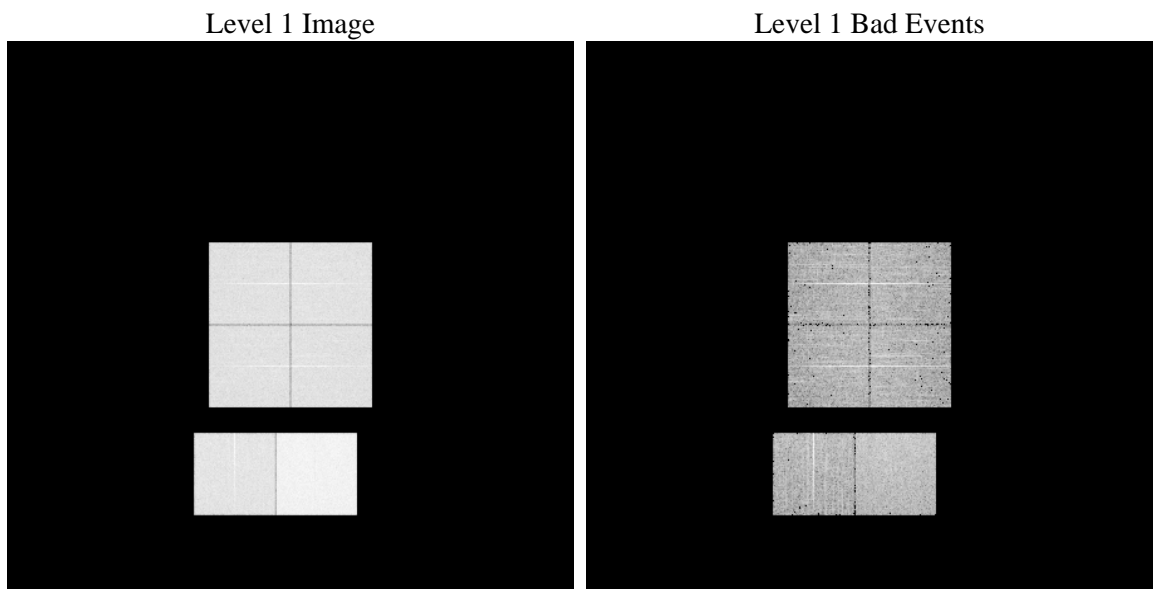
1 Front

seq_num	 	Sequence number
obs_id	60770	Observation id
title	ACIS-012367 diagnostics	Proposal title
observer	CHANDRA engineering request/realtime commanding	Principal investig
object	 	Source name
dtcycle	0	
cycle	P	events from which exps? Prim/Second/Both
ra_targ	0.0	Observer's specified target RA [deg]
dec_targ	0.0	Observer's specified target Dec [deg]
ra_nom	329.98685548371	Nominal RA [deg]
dec_nom	61.027883783413	Nominal Dec [deg]
roll_nom	69.943004141715	Nominal Roll [deg]
revision	3	Processing version of data
ontime	8366.7171748281	Sum of GTIs [s]
livetime	8260.7727641281	Livetime [s]
ontime0	4720.5897106826	Sum of GTIs [s]
ontime1	4905.2847910225	Sum of GTIs [s]
ontime2	4649.2055180967	Sum of GTIs [s]
ontime3	4644.3880948424	Sum of GTIs [s]
ontime6	5052.7515905499	Sum of GTIs [s]
ontime7	8366.7171748281	Sum of GTIs [s]
l2events	1262377	Number of level 2 events

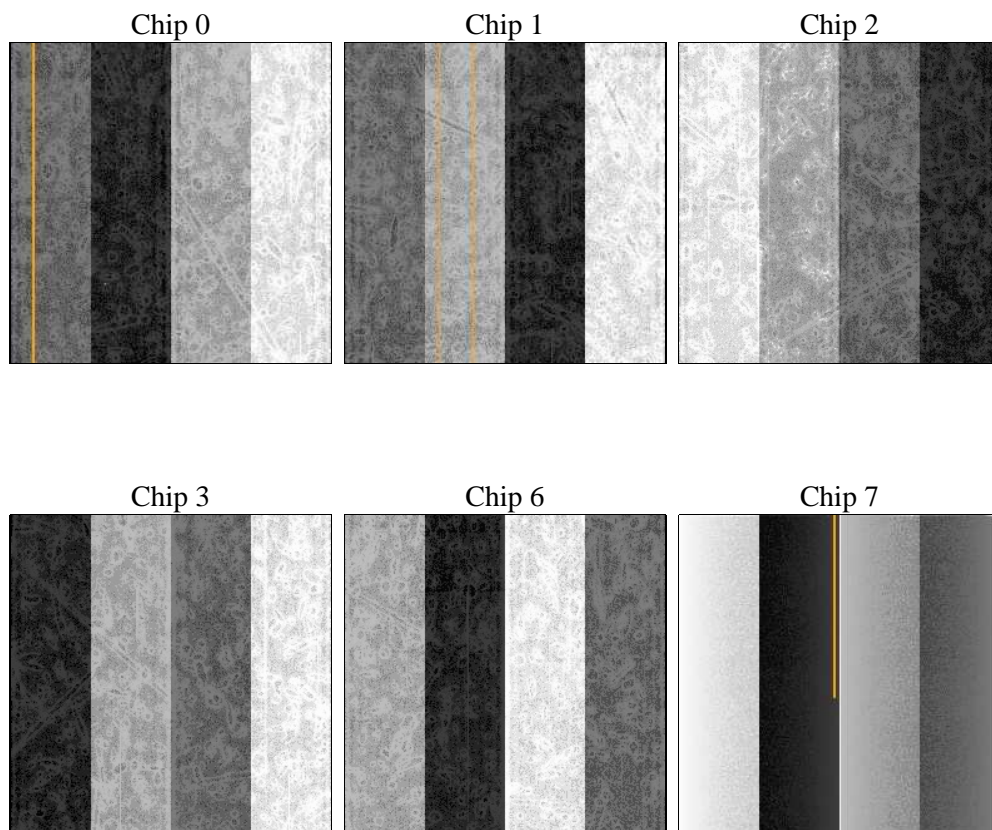
2 OBI

2.1 OBI

2.1.1 Images



2.1.2 Bias



2.1.3 Parameters

obi_num	1	Obi number	sched_exp_time	0.0	[s] Scheduled observation exposure time
ascdsver	8.4.5	Processing system revision	ontime	8366.7171748281	Sum of GTIs [s]
caldsver	4.5.2	 	ontime0	4720.5897106826	Sum of GTIs [s]
date	2012-10-26T22:58:52	Date and time of file creation	ontime1	4905.2847910225	Sum of GTIs [s]
revision	3	Processing version of data	ontime2	4649.2055180967	Sum of GTIs [s]
			ontime3	4644.3880948424	Sum of GTIs [s]
			ontime6	5052.7515905499	Sum of GTIs [s]
			ontime7	8366.7171748281	Sum of GTIs [s]
			l1events	1542311	Number of level 1 events

2.1.4 Events

	ccd 0	ccd 1	ccd 2	ccd 3	ccd 6	ccd 7		ccd 0	ccd 1	ccd 2	ccd 3	ccd 6	ccd 7
level 1 events	221475	229512	220951	221982	248652	399739	grade 0 events	104785	108761	105963	105737	116136	87994
rejected events	33342	33691	33892	34779	37303	48650		47%	47%	47%	47%	46%	22%
rejected %	15%	14%	15%	15%	15%	12%	grade 1 events	577	533	650	609	520	226
								0%	0%	0%	0%	0%	0%
							grade 2 events	33121	35163	31937	32141	36625	77933
								14%	15%	14%	14%	14%	19%
							grade 3 events	12291	12577	12463	12413	13331	35636
								5%	5%	5%	5%	5%	8%
							grade 4 events	12369	12526	12413	12604	13280	35974
								5%	5%	5%	5%	5%	8%
							grade 5 events	2124	2180	1929	2249	2517	8464
								0%	0%	0%	1%	1%	2%
							grade 6 events	27610	29029	26626	26323	34133	117608
								12%	12%	12%	11%	13%	29%
							grade 7 events	28598	28743	28970	29906	32110	35904
								12%	12%	13%	13%	12%	8%

2.2 Compared Parameters

Parameter	Planned	Actual	Parameter	Planned	Actual
Instrument	ACIS	ACIS	Obspar format version number	7	7
Detector	ACIS-012367	ACIS-012367	Obspar file type	PREDICTED	ACTUAL
Grating	NONE	NONE	Obspar update status	NONE	UPDATED
Data mode	FAINT	FAINT	On-chip summing requested	N	N
Observation mode	SECONDARY	SECONDARY	Subarray requested	NONE	NONE
[deg] Pointing RA	0	329.9868554837138	Alternating exposures requested	N	N
[deg] Pointing Dec	0	61.0278837834128	[s] Primary exposure time	0.000000	3.2
[deg] Pointing Roll	0.0	69.94300414171497			
[mm] SIM focus pos	-0.782348	-0.6828225247311905			
[mm] SIM defocus	0	0.8505141146731063			
[mm] SIM translation stage pos	-233.592463	250.466033080201			
[mm] SIM translation stage offset	0	-0.01005468664627074			
[s] Observation start time (MET)	167490749.800861	167490748.77614			
Observation start date	2003-04-23T13:12:30	2003-04-23T13:12:28			
[s] Observation end time (MET)	167514882.401882	167514881.37716			
Observation end date	2003-04-23T19:54:42	2003-04-23T19:54:41			
Read mode	TIMED	TIMED			

2.3 Star Slots

2.4 FID Slots

A Summary

A.1 Status

V&V Scientist	Beth Sundheim
V&V Date (YYYY-MM-DD)	2012.12.06
V&V Edition	1
V&V Disposition and Status	OK
V&V Charge Time	8.3667171748281

A.2 Comments