

V&V Reference Report

L2 ASCDS Version : 7.6.8.1

Observation 60770 - L2 Version 001
Chandra X-Ray Center

L2 Processing Date : Aug 5 2006

Contents

1	Front	2
2	OBI	3
2.1	OBI	3
2.1.1	Images	3
2.1.2	Bias	3
2.1.3	Parameters	4
2.1.4	Events	4
2.2	Compared Parameters	5
2.3	Aspect	6
2.4	Star Slots	8
2.5	FID Slots	8
A	Summary	9
A.1	Status	9
A.2	Comments	9

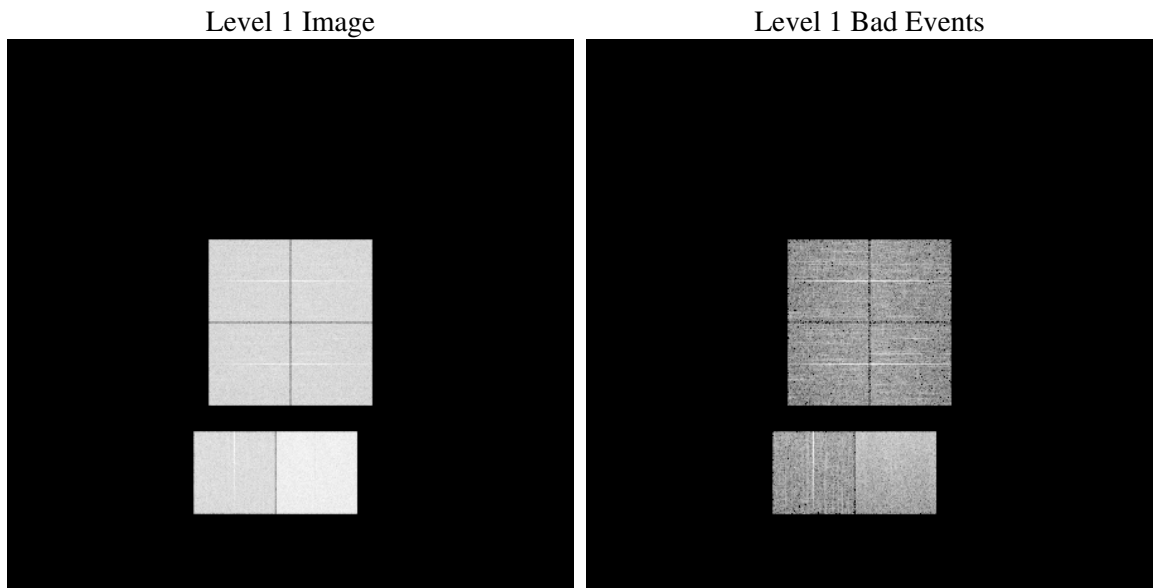
1 Front

seq_num	
obs_id	60770
title	ACIS-012367 diagnostics
observer	CHANDRA engineering request/realtime commanding
object	
dtcycle	0
cycle	P
ra_targ	0.0
dec_targ	0.0
ra_nom	329.98685549813
dec_nom	61.027883782928
roll_nom	69.943004130671
revision	2
ontime	8367.9999688268
livetime	8262.0393146168
ontime0	4721.895703733
ontime1	4906.6496650279
ontime2	4650.6114321053
ontime3	4644.1298296154
ontime6	5052.598544538
ontime7	8367.9999688268
l2events	1249329

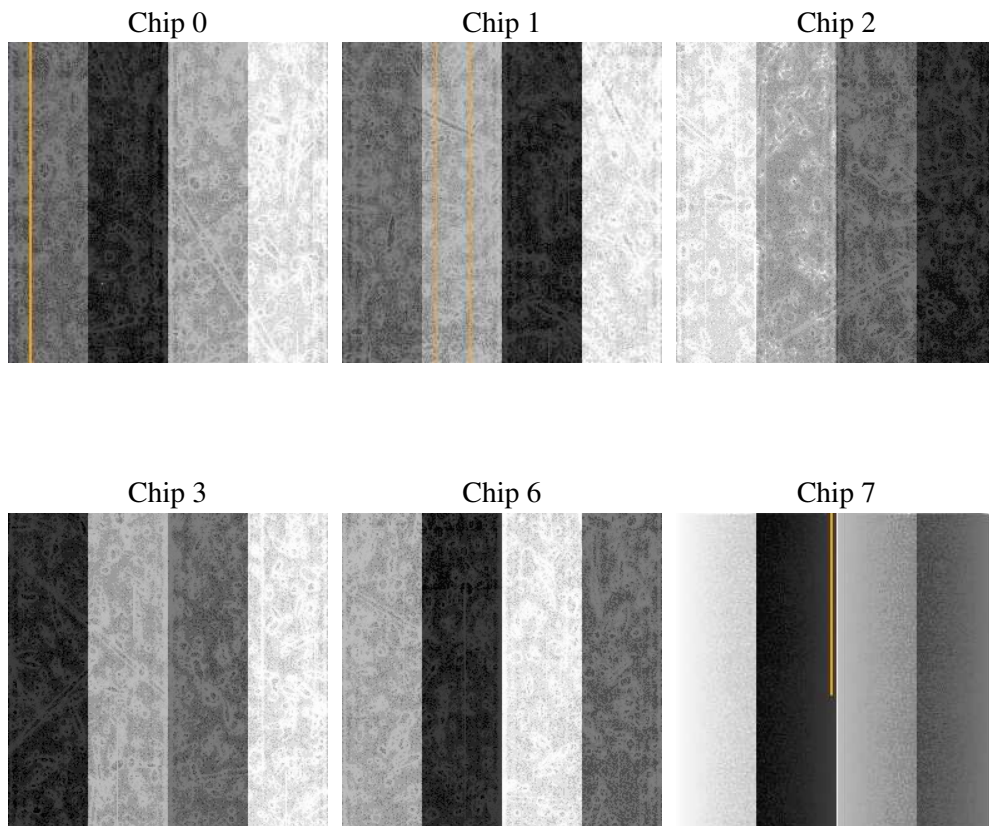
2 OBI

2.1 OBI

2.1.1 Images



2.1.2 Bias



2.1.3 Parameters

obi_num	1
ascdsver	7.6.8.1
caldbver	3.2.2
date	2006-08-05T06:02:04
revision	2

sched_exp_time	0.0
ontime	8465.4882380068
ontime0	4774.0283301473
ontime1	4958.7643907964
ontime2	4705.9671879411
ontime3	4693.0035352409
ontime6	5104.608061105
ontime7	8465.4882380068
l1events	1542311

2.1.4 Events

	ccd 0	ccd 1	ccd 2	ccd 3	ccd 6	ccd 7
level 1 events	221475	229512	220951	221982	248652	399739
rejected events	33341	33565	33751	34776	37301	62105
rejected %	15%	14%	15%	15%	15%	15%

	ccd 0	ccd 1	ccd 2	ccd 3	ccd 6	ccd 7
grade 0 events	104792	108764	105973	105740	116147	59879
	47%	47%	47%	47%	46%	14%
grade 1 events	577	533	650	610	521	135
	0%	0%	0%	0%	0%	0%
grade 2 events	33114	35160	31927	32138	36614	103978
	14%	15%	14%	14%	14%	26%
grade 3 events	12293	12579	12468	12417	13334	24579
	5%	5%	5%	5%	5%	6%
grade 4 events	12372	12526	12415	12607	13285	24626
	5%	5%	5%	5%	5%	6%
grade 5 events	2123	2180	1930	2247	2516	7437
	0%	0%	0%	1%	1%	1%
grade 6 events	27606	29027	26619	26319	34127	128482
	12%	12%	12%	11%	13%	32%
grade 7 events	28598	28743	28969	29904	32108	50623
	12%	12%	13%	13%	12%	12%

2.2 Compared Parameters

Parameter	Planned	Actual	Parameter	Planned	Actual
Instrument	ACIS	ACIS	Obspar format version number	6	6
Detector	ACIS-012367	ACIS-012367	Obspar file type	PREDICTED	ACTUAL
Grating	NONE	NONE	Obspar update status	NONE	UPDATED
Data mode	FAINT	FAINT	On-chip summing requested	N	N
Observation mode	SECONDARY	SECONDARY	Subarray requested	NONE	NONE
Pointing RA	0	329.9868554981307	Alternating exposures requested	N	N
Pointing Dec	0	61.0278837829281	Primary exposure time	0.000000	3.2
Pointing Roll	0.0	69.94300413067081			
SIM focus pos (mm)	-0.782348	-0.6828225247311905			
SIM defocus (mm)	0	0.8505141146731063			
SIM translation stage pos (mm)	-233.592463	250.466033080201			
SIM translation stage offset (mm)	0	-0.01005468664627074			
Observation start time	167490749.800861	167490748.77614			
Observation start date	2003-04-23T13:12:30	2003-04-23T13:12:28			
Observation end time	167514882.401882	167514881.37716			
Observation end date	2003-04-23T19:54:42	2003-04-23T19:54:41			
Read mode	TIMED	TIMED			

2.3 Aspect

2.4 Star Slots

2.5 FID Slots

A Summary

A.1 Status

V&V Scientist	Beth Sundheim
V&V Date (YYYY-MM-DD)	2006.08.06
V&V Edition	1
V&V Disposition and Status	OK
V&V Charge Time	8.36799996

A.2 Comments