

# V&V Reference Report

## L2 ASCDS Version : 8.4.5

Observation 60747 - L2 Version 3  
Chandra X-Ray Center

L2 Processing Date : Oct 27 2012

## Contents

<b>1</b>	<b>Front</b>	<b>2</b>
<b>2</b>	<b>OBI</b>	<b>3</b>
2.1	OBI . . . . .	3
2.1.1	Images . . . . .	3
2.1.2	Bias . . . . .	3
2.1.3	Parameters . . . . .	4
2.1.4	Events . . . . .	4
2.2	Compared Parameters . . . . .	5
2.3	Star Slots . . . . .	6
2.4	FID Slots . . . . .	6
<b>A</b>	<b>Summary</b>	<b>7</b>
A.1	Status . . . . .	7
A.2	Comments . . . . .	7

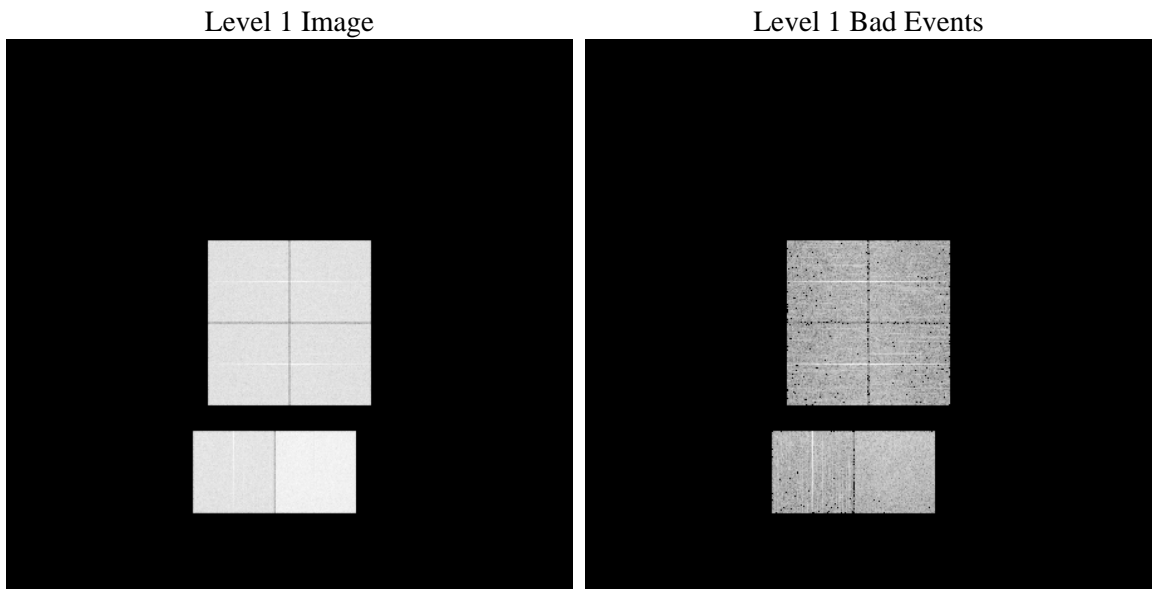
# 1 Front

seq_num	&#160	Sequence number
obs_id	60747	Observation id
title	ACIS-012367 diagnostics	Proposal title
observer	CHANDRA engineering request/realtime commanding	Principal investig
object	&#160	Source name
dtcycle	0	&#160
cycle	P	events from which exps? Prim/Second/Both
ra_targ	0.0	Observer's specified target RA [deg]
dec_targ	0.0	Observer's specified target Dec [deg]
ra_nom	289.58018045761	Nominal RA [deg]
dec_nom	-24.777781302292	Nominal Dec [deg]
roll_nom	96.203281954327	Nominal Roll [deg]
revision	3	Processing version of data
ontime	8467.1999684572	Sum of GTIs [s]
livetime	8359.9831841209	Livetime [s]
ontime0	4903.4223982394	Sum of GTIs [s]
ontime1	5046.0668055117	Sum of GTIs [s]
ontime2	4838.6858998835	Sum of GTIs [s]
ontime3	4819.074832648	Sum of GTIs [s]
ontime6	5203.5449111462	Sum of GTIs [s]
ontime7	8467.1999684572	Sum of GTIs [s]
l2events	1286136	Number of level 2 events

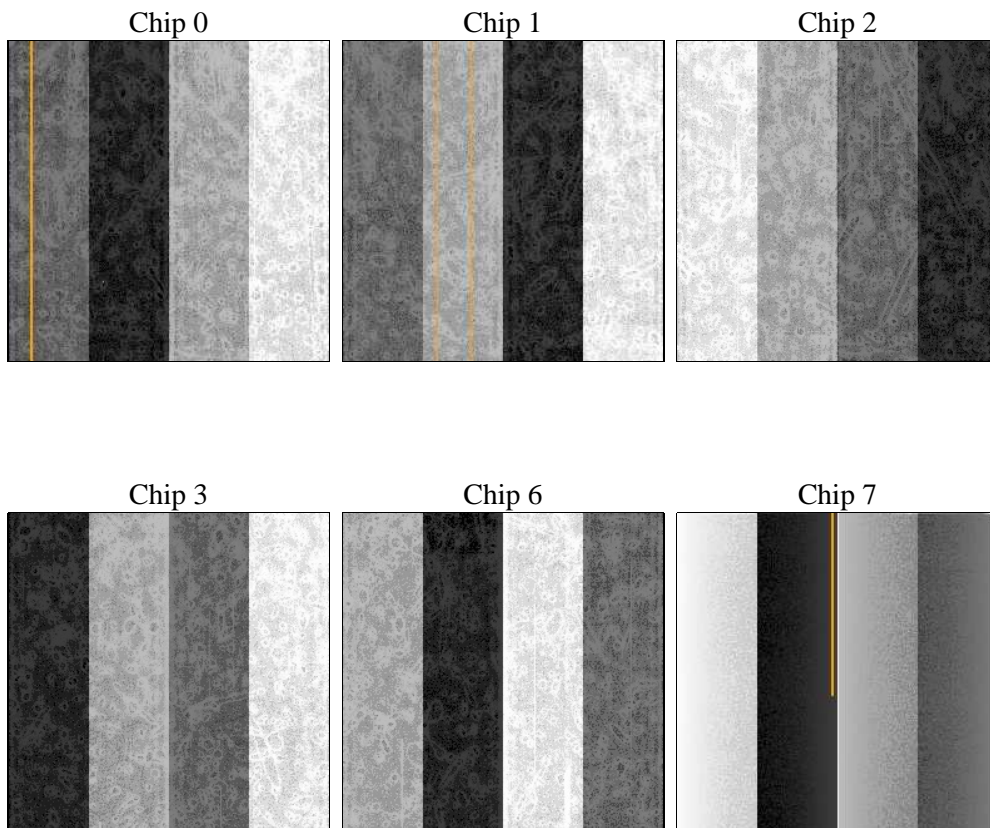
## 2 OBI

### 2.1 OBI

#### 2.1.1 Images



#### 2.1.2 Bias



### 2.1.3 Parameters

obi_num	1	Obi number	sched_exp_time	0.0	[s] Scheduled observation exposure time
ascdsver	8.4.5	Processing system revision	ontime	8467.1999684572	Sum of GTIs [s]
caldbver	4.5.2	&#160	ontime0	4903.4223982394	Sum of GTIs [s]
date	2012-10-27T19:26:24	Date and time of file creation	ontime1	5046.0668055117	Sum of GTIs [s]
revision	3	Processing version of data	ontime2	4838.6858998835	Sum of GTIs [s]
			ontime3	4819.074832648	Sum of GTIs [s]
			ontime6	5203.5449111462	Sum of GTIs [s]
			ontime7	8467.1999684572	Sum of GTIs [s]
			l1events	1542180	Number of level 1 events

### 2.1.4 Events

	ccd 0	ccd 1	ccd 2	ccd 3	ccd 6	ccd 7		ccd 0	ccd 1	ccd 2	ccd 3	ccd 6	ccd 7
level 1 events	223285	228295	222977	223400	249840	394383	grade 0 events	106425	109442	108161	108755	117401	88429
rejected events	29915	29579	30091	30637	33874	42715		47%	47%	48%	48%	46%	22%
rejected %	13%	12%	13%	13%	13%	10%	grade 1 events	526	515	605	624	558	234
								0%	0%	0%	0%	0%	0%
							grade 2 events	33839	35101	32620	32843	37148	77553
								15%	15%	14%	14%	14%	19%
							grade 3 events	12462	12556	12604	12557	13354	35410
								5%	5%	5%	5%	5%	8%
							grade 4 events	12491	12551	12621	12515	13450	34945
								5%	5%	5%	5%	5%	8%
							grade 5 events	2079	2201	2047	2189	2483	8250
								0%	0%	0%	0%	0%	2%
							grade 6 events	28153	29066	26880	26093	34613	115331
								12%	12%	12%	11%	13%	29%
							grade 7 events	27310	26863	27439	27824	30833	34231
								12%	11%	12%	12%	12%	8%

## 2.2 Compared Parameters

Parameter	Planned	Actual
Instrument	ACIS	ACIS
Detector	ACIS-012367	ACIS-012367
Grating	NONE	NONE
Data mode	FAINT	FAINT
Observation mode	SECONDARY	SECONDARY
[deg] Pointing RA	0	289.580180457607
[deg] Pointing Dec	0	-24.77778130229249
[deg] Pointing Roll	0.0	96.20328195432739
[mm] SIM focus pos	-0.782348	-0.6828225247311905
[mm] SIM defocus	0	0.8505141146731063
[mm] SIM translation stage pos	-233.592463	250.466033080201
[mm] SIM translation stage offset	0	-0.01005468664627074
[s] Observation start time (MET)	168875016.459371	168875015.43466
Observation start date	2003-05-09T13:43:36	2003-05-09T13:43:35
[s] Observation end time (MET)	168886334.509848	168886333.48514
Observation end date	2003-05-09T16:52:15	2003-05-09T16:52:13
Read mode	TIMED	TIMED

Parameter	Planned	Actual
Obspar format version number	7	7
Obspar file type	PREDICTED	ACTUAL
Obspar update status	NONE	UPDATED
On-chip summing requested	N	N
Subarray requested	NONE	NONE
Alternating exposures requested	N	N
[s] Primary exposure time	0.000000	3.2

## **2.3 Star Slots**

## **2.4 FID Slots**

## A Summary

### A.1 Status

V&V Scientist	Beth Sundheim
V&V Date (YYYY-MM-DD)	2012.12.07
V&V Edition	1
V&V Disposition and Status	OK
V&V Charge Time	8.4671999684572

### A.2 Comments