

V&V Reference Report

L2 ASCDS Version : 7.6.8.1

Observation 60747 - L2 Version 001
Chandra X-Ray Center

L2 Processing Date : Aug 12 2006

Contents

1	Front	2
2	OBI	3
2.1	OBI	3
2.1.1	Images	3
2.1.2	Bias	3
2.1.3	Parameters	4
2.1.4	Events	4
2.2	Compared Parameters	5
2.3	Aspect	6
2.4	Star Slots	8
2.5	FID Slots	8
A	Summary	9
A.1	Status	9
A.2	Comments	9

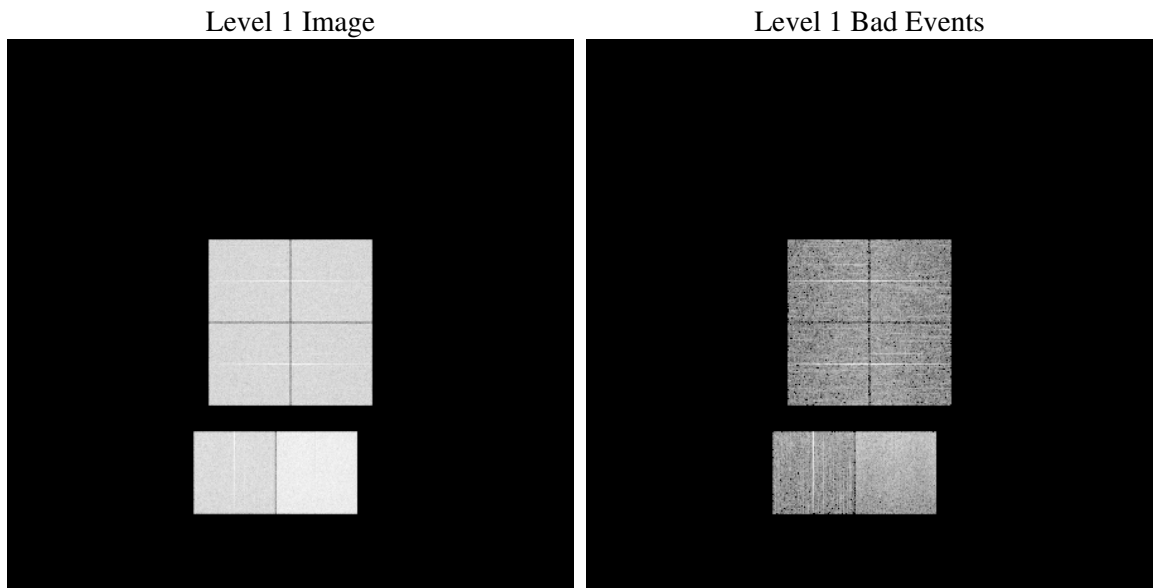
1 Front

seq_num	
obs_id	60747
title	ACIS-012367 diagnostics
observer	CHANDRA engineering request/realtime commanding
object	
dtcycle	0
cycle	P
ra_targ	0.0
dec_targ	0.0
ra_nom	289.58018045761
dec_nom	-24.777781302292
roll_nom	96.203281954327
revision	2
ontime	8466.8474348783
livetime	8359.6351145345
ontime0	4901.8223982453
ontime1	5044.4668055177
ontime2	4837.0858998895
ontime3	4817.474832654
ontime6	5203.3565375507
ontime7	8466.8474348783
l2events	1272685

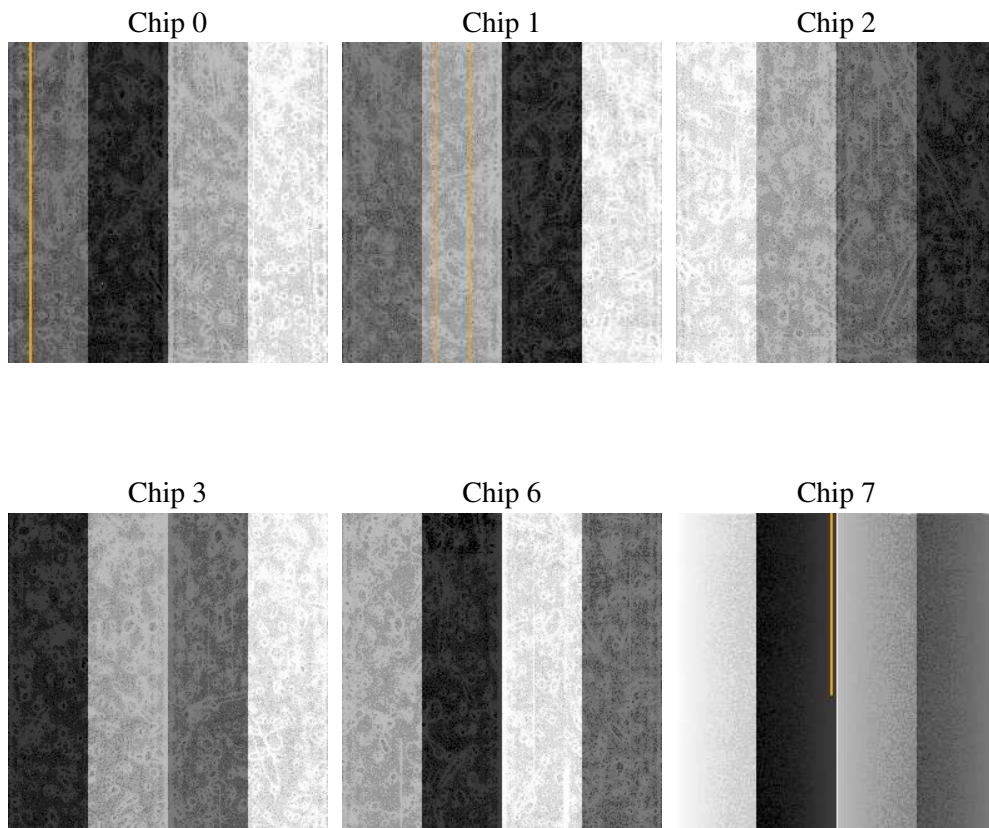
2 OBI

2.1 OBI

2.1.1 Images



2.1.2 Bias



2.1.3 Parameters

obi_num	1
ascdsver	7.6.8.1
caldbver	3.2.3
date	2006-08-12T09:43:58
revision	2

sched_exp_time	0.0
ontime	8468.7333678603
ontime0	4903.667291224
ontime1	5046.270658493
ontime2	4838.8487128615
ontime3	4819.4018056393
ontime6	5205.0783105493
ontime7	8468.7333678603
l1events	1542180

2.1.4 Events

	ccd 0	ccd 1	ccd 2	ccd 3	ccd 6	ccd 7
level 1 events	223285	228295	222977	223400	249840	394383
rejected events	30048	29698	30229	30787	34017	55691
rejected %	13%	13%	13%	13%	13%	14%

	ccd 0	ccd 1	ccd 2	ccd 3	ccd 6	ccd 7
grade 0 events	106425	109442	108161	108755	117401	61319
	47%	47%	48%	48%	46%	15%
grade 1 events	526	515	605	624	558	147
	0%	0%	0%	0%	0%	0%
grade 2 events	33839	35101	32620	32843	37148	102664
	15%	15%	14%	14%	14%	26%
grade 3 events	12462	12556	12604	12557	13355	24962
	5%	5%	5%	5%	5%	6%
grade 4 events	12491	12552	12621	12515	13449	24250
	5%	5%	5%	5%	5%	6%
grade 5 events	2079	2201	2047	2189	2483	7118
	0%	0%	0%	0%	0%	1%
grade 6 events	28153	29065	26881	26093	34613	125626
	12%	12%	12%	11%	13%	31%
grade 7 events	27310	26863	27438	27824	30833	48297
	12%	11%	12%	12%	12%	12%

2.2 Compared Parameters

Parameter	Planned	Actual	Parameter	Planned	Actual
Instrument	ACIS	ACIS	Obspar format version number	6	6
Detector	ACIS-012367	ACIS-012367	Obspar file type	PREDICTED	ACTUAL
Grating	NONE	NONE	Obspar update status	NONE	UPDATED
Data mode	FAINT	FAINT	On-chip summing requested	N	N
Observation mode	SECONDARY	SECONDARY	Subarray requested	NONE	NONE
Pointing RA	0	289.5801804576074	Alternating exposures requested	N	N
Pointing Dec	0	-24.77778130229244	Primary exposure time	0.000000	3.2
Pointing Roll	0.0	96.20328195432731			
SIM focus pos (mm)	-0.782348	-0.6828225247311905			
SIM defocus (mm)	0	0.8505141146731063			
SIM translation stage pos (mm)	-233.592463	250.466033080201			
SIM translation stage offset (mm)	0	-0.01005468664627074			
Observation start time	168875016.459371	168875015.43466			
Observation start date	2003-05-09T13:43:36	2003-05-09T13:43:35			
Observation end time	168886334.509848	168886333.48514			
Observation end date	2003-05-09T16:52:15	2003-05-09T16:52:13			
Read mode	TIMED	TIMED			

2.3 Aspect

2.4 Star Slots

2.5 FID Slots

A Summary

A.1 Status

V&V Scientist	Jen Lauer
V&V Date (YYYY-MM-DD)	2006.08.13
V&V Edition	1
V&V Disposition and Status	OK
V&V Charge Time	8.46684743

A.2 Comments