

# V&V Reference Report

## L2 ASCDS Version : 8.4.5

Observation 60739 - L2 Version 3  
Chandra X-Ray Center

L2 Processing Date : Oct 28 2012

## Contents

<b>1</b>	<b>Front</b>	<b>2</b>
<b>2</b>	<b>OBI</b>	<b>3</b>
2.1	OBI . . . . .	3
2.1.1	Images . . . . .	3
2.1.2	Bias . . . . .	3
2.1.3	Parameters . . . . .	4
2.1.4	Events . . . . .	4
2.2	Compared Parameters . . . . .	5
2.3	Star Slots . . . . .	6
2.4	FID Slots . . . . .	6
<b>A</b>	<b>Summary</b>	<b>7</b>
A.1	Status . . . . .	7
A.2	Comments . . . . .	7

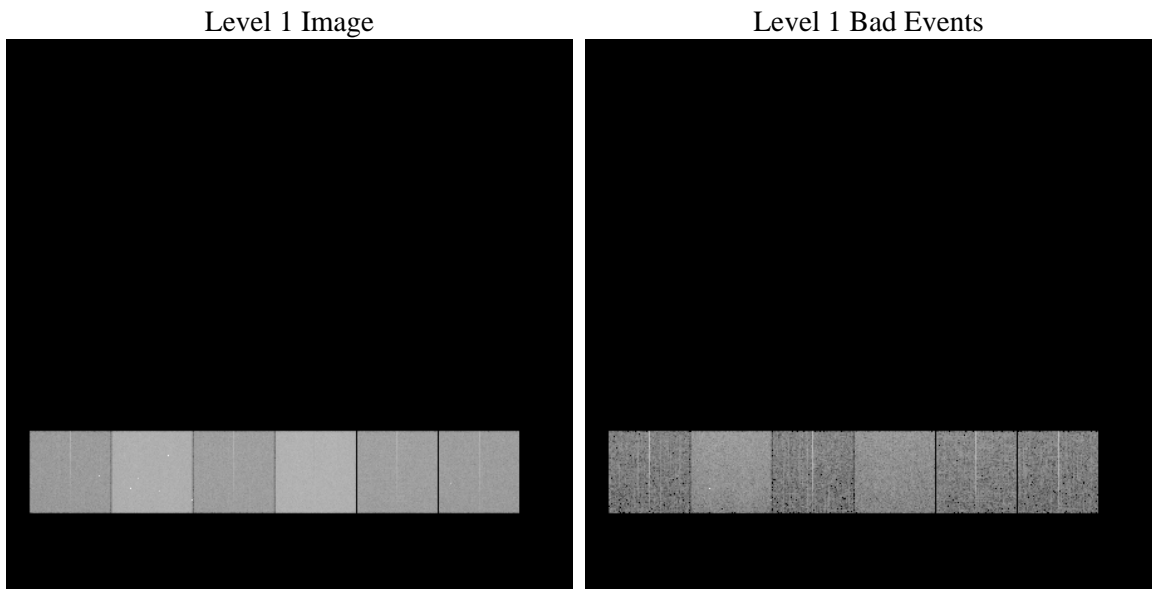
# 1 Front

seq_num	&#160	Sequence number
obs_id	60739	Observation id
title	ACIS-456789 diagnostics	Proposal title
observer	CHANDRA engineering request/realtime commanding	Principal investig
object	&#160	Source name
dtcycle	0	&#160
cycle	P	events from which exps? Prim/Second/Both
ra_targ	0.0	Observer's specified target RA [deg]
dec_targ	0.0	Observer's specified target Dec [deg]
ra_nom	112.01907465041	Nominal RA [deg]
dec_nom	34.9760553861	Nominal Dec [deg]
roll_nom	270.20367062175	Nominal Roll [deg]
revision	3	Processing version of data
ontime	8386.1970045865	Sum of GTIs [s]
livetime	8280.0059285528	Livetime [s]
ontime4	3824.4156891704	Sum of GTIs [s]
ontime5	8386.1559645832	Sum of GTIs [s]
ontime6	4140.4472598135	Sum of GTIs [s]
ontime7	8386.1970045865	Sum of GTIs [s]
ontime8	4213.3348069787	Sum of GTIs [s]
ontime9	4027.1350158453	Sum of GTIs [s]
l2events	1250684	Number of level 2 events

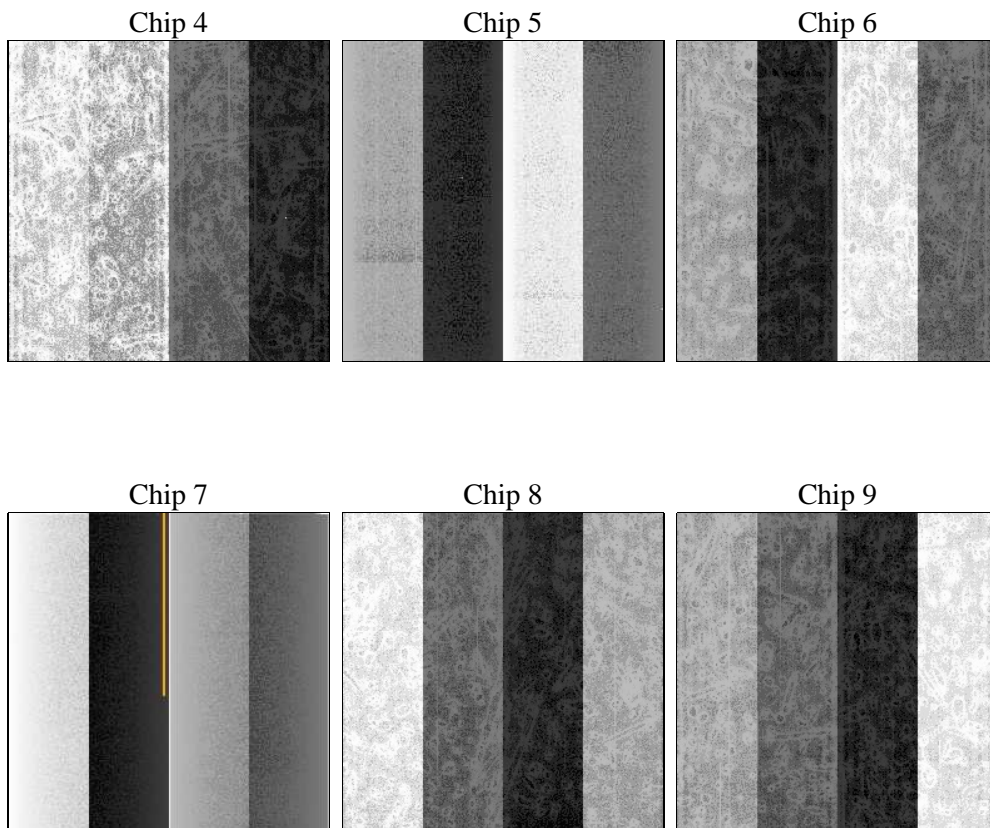
## 2 OBI

### 2.1 OBI

#### 2.1.1 Images



#### 2.1.2 Bias



### 2.1.3 Parameters

obi_num	1	Obi number	sched_exp_time	0.0	[s] Scheduled observation exposure time
ascdsver	8.4.5	Processing system revision	ontime	8386.1970045865	Sum of GTIs [s]
caldsver	4.5.2	&#160	ontime4	3824.4156891704	Sum of GTIs [s]
date	2012-10-28T09:32:12	Date and time of file creation	ontime5	8386.1559645832	Sum of GTIs [s]
revision	3	Processing version of data	ontime6	4140.4472598135	Sum of GTIs [s]
			ontime7	8386.1970045865	Sum of GTIs [s]
			ontime8	4213.3348069787	Sum of GTIs [s]
			ontime9	4027.1350158453	Sum of GTIs [s]
			l1events	1540057	Number of level 1 events

### 2.1.4 Events

	ccd 4	ccd 5	ccd 6	ccd 7	ccd 8	ccd 9		ccd 4	ccd 5	ccd 6	ccd 7	ccd 8	ccd 9
level 1 events	176363	367279	200978	396530	209183	189724	grade 0 events	86498	75108	94356	87411	97717	89409
rejected events	28988	57554	29720	47694	33478	29174		49%	20%	46%	22%	46%	47%
rejected %	16%	15%	14%	12%	16%	15%	grade 1 events	587	296	455	246	487	505
								0%	0%	0%	0%	0%	0%
							grade 2 events	23665	110495	29636	77648	31014	27898
								13%	30%	14%	19%	14%	14%
							grade 3 events	9765	20002	10732	35938	11403	10340
								5%	5%	5%	9%	5%	5%
							grade 4 events	9869	19561	10770	35345	11294	10433
								5%	5%	5%	8%	5%	5%
							grade 5 events	1817	9857	2077	8478	2337	1996
								1%	2%	1%	2%	1%	1%
							grade 6 events	18824	87350	27188	115576	26058	24168
								10%	23%	13%	29%	12%	12%
							grade 7 events	25338	44610	25764	35888	28873	24975
								14%	12%	12%	9%	13%	13%

## 2.2 Compared Parameters

Parameter	Planned	Actual	Parameter	Planned	Actual
Instrument	ACIS	ACIS	Obspar format version number	7	7
Detector	ACIS-456789	ACIS-456789	Obspar file type	PREDICTED	ACTUAL
Grating	NONE	NONE	Obspar update status	NONE	UPDATED
Data mode	FAINT	FAINT	On-chip summing requested	N	N
Observation mode	SECONDARY	SECONDARY	Subarray requested	NONE	NONE
[deg] Pointing RA	0	112.0190746504059	Alternating exposures requested	N	N
[deg] Pointing Dec	0	34.97605538609986	[s] Primary exposure time	0.000000	3.2
[deg] Pointing Roll	0.0	270.20367062175			
[mm] SIM focus pos	-0.684267	-0.6828225247311905			
[mm] SIM defocus	0	0.8505141146731063			
[mm] SIM translation stage pos	-190.132523	250.466033080201			
[mm] SIM translation stage offset	0	-0.01005468664627074			
[s] Observation start time (MET)	169316647.978042	169316646.95334			
Observation start date	2003-05-14T16:24:08	2003-05-14T16:24:06			
[s] Observation end time (MET)	169340058.979032	169340057.95434			
Observation end date	2003-05-14T22:54:19	2003-05-14T22:54:17			
Read mode	TIMED	TIMED			

## **2.3 Star Slots**

## **2.4 FID Slots**

## A Summary

### A.1 Status

V&V Scientist	Jen Lauer
V&V Date (YYYY-MM-DD)	2012.12.06
V&V Edition	1
V&V Disposition and Status	OK
V&V Charge Time	8.3861970045865

### A.2 Comments