

V&V Reference Report

L2 ASCDS Version : 7.6.8.1

Observation 60739 - L2 Version 001
Chandra X-Ray Center

L2 Processing Date : Aug 12 2006

Contents

1	Front	2
2	OBI	3
2.1	OBI	3
2.1.1	Images	3
2.1.2	Bias	3
2.1.3	Parameters	4
2.1.4	Events	4
2.2	Compared Parameters	5
2.3	Aspect	6
2.4	Star Slots	8
2.5	FID Slots	8
A	Summary	9
A.1	Status	9
A.2	Comments	9

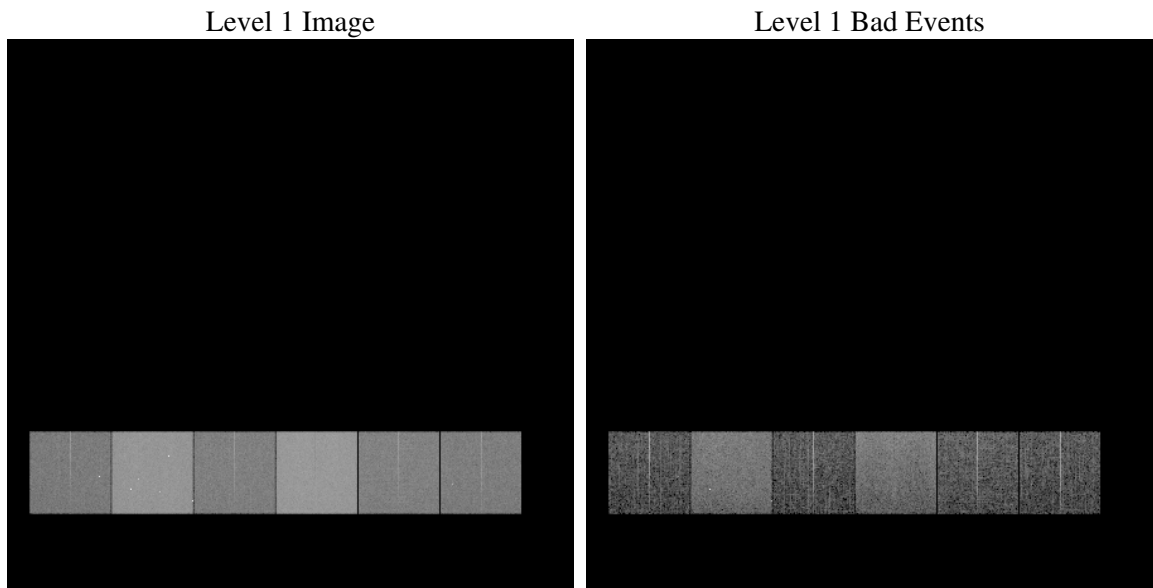
1 Front

seq_num	
obs_id	60739
title	ACIS-456789 diagnostics
observer	CHANDRA engineering request/realtime commanding
object	
dtcycle	0
cycle	P
ra_targ	0.0
dec_targ	0.0
ra_nom	112.01907464616
dec_nom	34.976055387858
roll_nom	270.20367062294
revision	2
ontime	8387.1999687552
livetime	8280.9961925854
ontime4	3823.941773355
ontime5	8387.1999687552
ontime6	4141.5193743408
ontime7	8387.1999687552
ontime8	4212.9019311368
ontime9	4027.9608903527
l2events	1229118

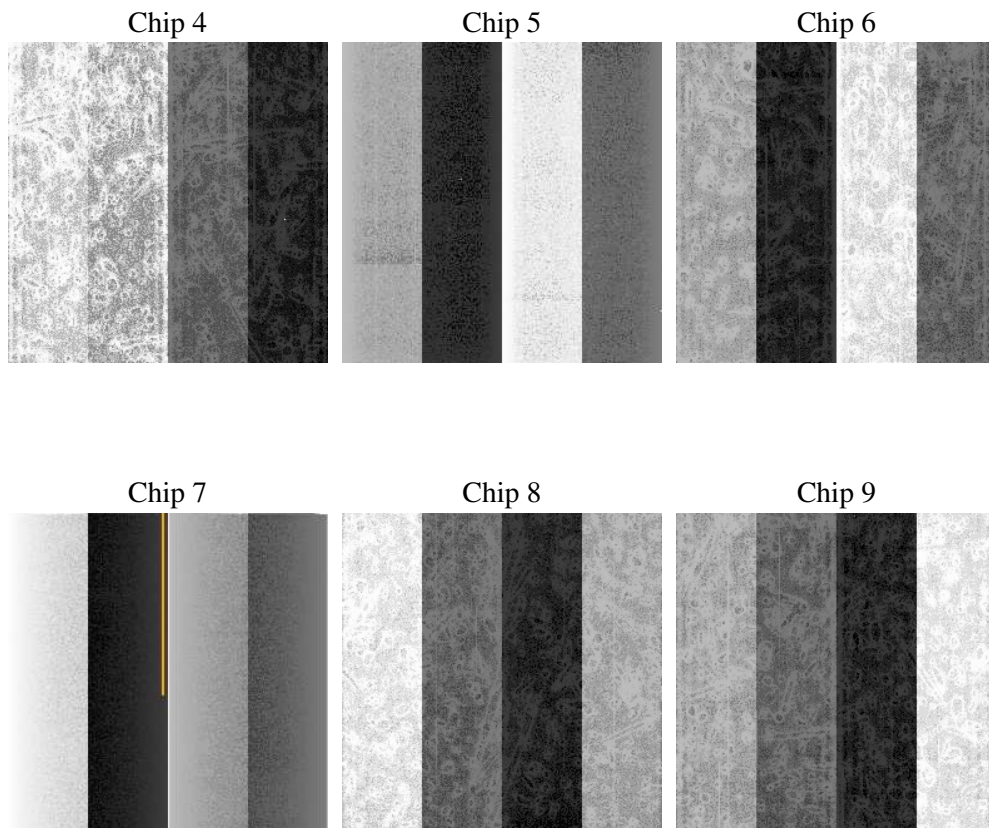
2 OBI

2.1 OBI

2.1.1 Images



2.1.2 Bias



2.1.3 Parameters

obi_num	1
ascdsver	7.6.8.1
caldsver	3.2.3
date	2006-08-12T10:53:52
revision	2

sched_exp_time	0.0
ontime	8462.2449580133
ontime4	3856.8260591626
ontime5	8462.2449580133
ontime6	4177.6855607927
ontime7	8462.2449580133
ontime8	4255.4681375325
ontime9	4070.7322468758
l1events	1540057

2.1.4 Events

	ccd 4	ccd 5	ccd 6	ccd 7	ccd 8	ccd 9
level 1 events	176363	367279	200978	396530	209183	189724
rejected events	28988	66214	29720	61013	33477	29174
rejected %	16%	18%	14%	15%	16%	15%

	ccd 4	ccd 5	ccd 6	ccd 7	ccd 8	ccd 9
grade 0 events	86500	38490	94359	59992	97722	89410
	49%	10%	46%	15%	46%	47%
grade 1 events	587	185	455	147	487	505
	0%	0%	0%	0%	0%	0%
grade 2 events	23663	143073	29633	103047	31009	27897
	13%	38%	14%	25%	14%	14%
grade 3 events	9767	10781	10733	25212	11405	10340
	5%	2%	5%	6%	5%	5%
grade 4 events	9872	10211	10771	24532	11295	10435
	5%	2%	5%	6%	5%	5%
grade 5 events	1817	7362	2078	7354	2337	1996
	1%	2%	1%	1%	1%	1%
grade 6 events	18819	101219	27186	125705	26056	24166
	10%	27%	13%	31%	12%	12%
grade 7 events	25338	55958	25763	50541	28872	24975
	14%	15%	12%	12%	13%	13%

2.2 Compared Parameters

Parameter	Planned	Actual	Parameter	Planned	Actual
Instrument	ACIS	ACIS	Obspar format version number	6	6
Detector	ACIS-456789	ACIS-456789	Obspar file type	PREDICTED	ACTUAL
Grating	NONE	NONE	Obspar update status	NONE	UPDATED
Data mode	FAINT	FAINT	On-chip summing requested	N	N
Observation mode	SECONDARY	SECONDARY	Subarray requested	NONE	NONE
Pointing RA	0	112.0190746461633	Alternating exposures requested	N	N
Pointing Dec	0	34.97605538785753	Primary exposure time	0.000000	3.2
Pointing Roll	0.0	270.2036706229397			
SIM focus pos (mm)	-0.684267	-0.6828225247311905			
SIM defocus (mm)	0	0.8505141146731063			
SIM translation stage pos (mm)	-190.132523	250.466033080201			
SIM translation stage offset (mm)	0	-0.01005468664627074			
Observation start time	169316647.978042	169316646.95334			
Observation start date	2003-05-14T16:24:08	2003-05-14T16:24:06			
Observation end time	169340058.979032	169340057.95434			
Observation end date	2003-05-14T22:54:19	2003-05-14T22:54:17			
Read mode	TIMED	TIMED			

2.3 Aspect

2.4 Star Slots

2.5 FID Slots

A Summary

A.1 Status

V&V Scientist	Jen Lauer
V&V Date (YYYY-MM-DD)	2006.08.13
V&V Edition	1
V&V Disposition and Status	OK
V&V Charge Time	8.38719996

A.2 Comments