

V&V Reference Report

L2 ASCDS Version : 8.4.5

Observation 60736 - L2 Version 3
Chandra X-Ray Center

L2 Processing Date : Oct 28 2012

Contents

1	Front	2
2	OBI	3
2.1	OBI	3
2.1.1	Images	3
2.1.2	Bias	3
2.1.3	Parameters	4
2.1.4	Events	4
2.2	Compared Parameters	5
2.3	Star Slots	6
2.4	FID Slots	6
A	Summary	7
A.1	Status	7
A.2	Comments	7

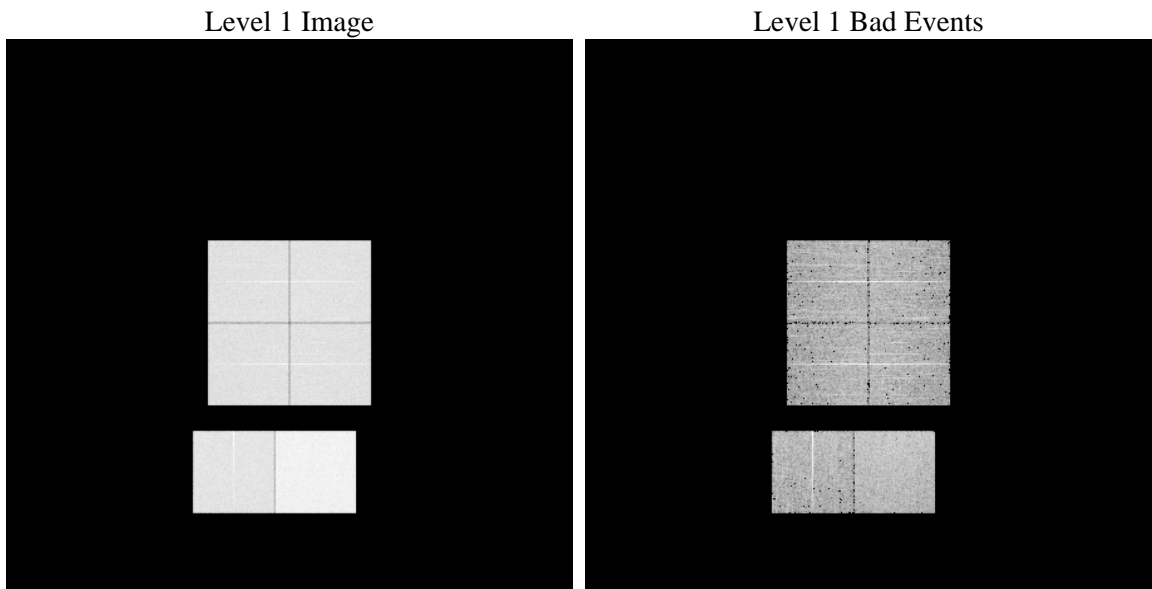
1 Front

seq_num	 	Sequence number
obs_id	60736	Observation id
title	ACIS-012367 diagnostics	Proposal title
observer	CHANDRA engineering request/realtime commanding	Principal investig
object	 	Source name
dtcycle	0	
cycle	P	events from which exps? Prim/Second/Both
ra_targ	0.0	Observer's specified target RA [deg]
dec_targ	0.0	Observer's specified target Dec [deg]
ra_nom	229.03978022311	Nominal RA [deg]
dec_nom	-48.988333914456	Nominal Dec [deg]
roll_nom	351.17822655183	Nominal Roll [deg]
revision	3	Processing version of data
ontime	8463.3686517179	Sum of GTIs [s]
livetime	8356.2003818211	Livetime [s]
ontime0	4933.9072035551	Sum of GTIs [s]
ontime1	5069.9879707992	Sum of GTIs [s]
ontime2	4762.0526231229	Sum of GTIs [s]
ontime3	4825.8865640759	Sum of GTIs [s]
ontime6	5198.600785166	Sum of GTIs [s]
ontime7	8463.3686517179	Sum of GTIs [s]
l2events	1275919	Number of level 2 events

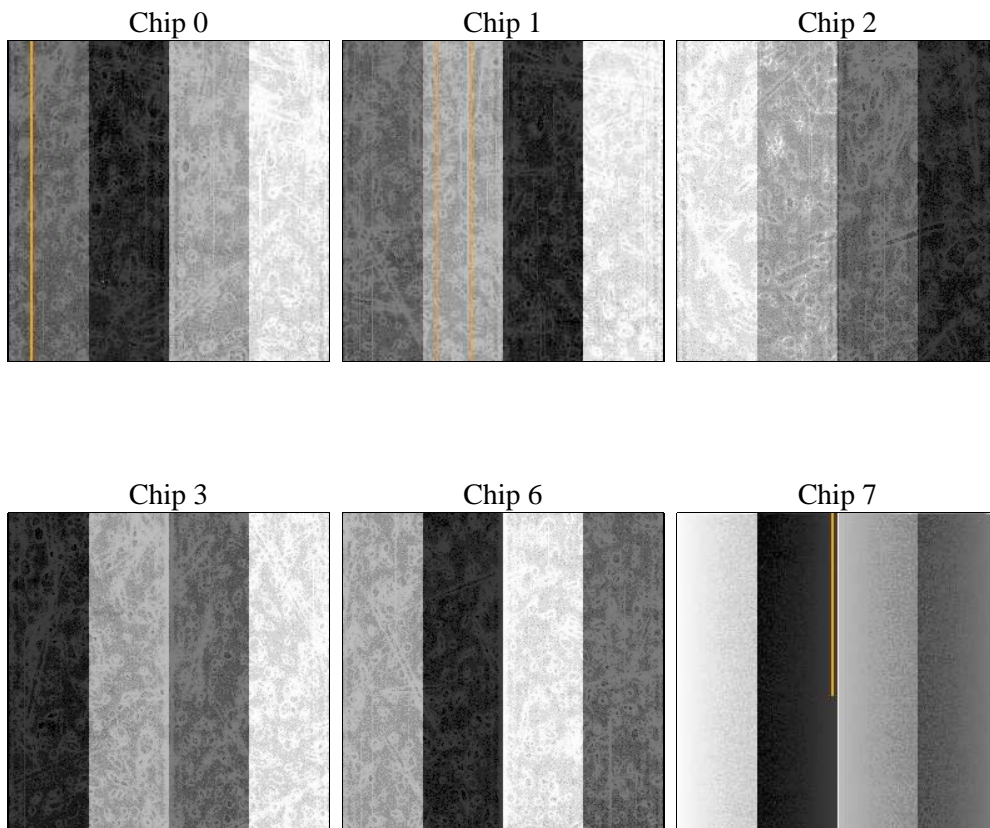
2 OBI

2.1 OBI

2.1.1 Images



2.1.2 Bias



2.1.3 Parameters

obi_num	1	Obi number	sched_exp_time	0.0	[s] Scheduled observation exposure time
ascdsver	8.4.5	Processing system revision	ontime	8463.3686517179	Sum of GTIs [s]
caldsver	4.5.2	 	ontime0	4933.9072035551	Sum of GTIs [s]
date	2012-10-28T10:05:16	Date and time of file creation	ontime1	5069.9879707992	Sum of GTIs [s]
revision	3	Processing version of data	ontime2	4762.0526231229	Sum of GTIs [s]
			ontime3	4825.8865640759	Sum of GTIs [s]
			ontime6	5198.600785166	Sum of GTIs [s]
			ontime7	8463.3686517179	Sum of GTIs [s]
			l1events	1542208	Number of level 1 events

2.1.4 Events

	ccd 0	ccd 1	ccd 2	ccd 3	ccd 6	ccd 7		ccd 0	ccd 1	ccd 2	ccd 3	ccd 6	ccd 7
level 1 events	224701	230396	219441	224188	248785	394697	grade 0 events	106908	108885	106050	107736	116633	87059
rejected events	31880	32397	31227	32759	34460	44054		47%	47%	48%	48%	46%	22%
rejected %	14%	14%	14%	14%	13%	11%	grade 1 events	579	519	584	603	532	249
								0%	0%	0%	0%	0%	0%
							grade 2 events	33471	35016	31853	32394	36923	76988
								14%	15%	14%	14%	14%	19%
							grade 3 events	12578	12468	12170	12678	13431	35722
								5%	5%	5%	5%	5%	9%
							grade 4 events	12564	12695	12124	12487	13210	35350
								5%	5%	5%	5%	5%	8%
							grade 5 events	2106	2281	2080	2299	2467	8466
								0%	0%	0%	1%	0%	2%
							grade 6 events	27432	29079	26136	26134	34128	115650
								12%	12%	11%	11%	13%	29%
							grade 7 events	29063	29453	28444	29857	31461	35213
								12%	12%	12%	13%	12%	8%

2.2 Compared Parameters

Parameter	Planned	Actual
Instrument	ACIS	ACIS
Detector	ACIS-012367	ACIS-012367
Grating	NONE	NONE
Data mode	FAINT	FAINT
Observation mode	SECONDARY	SECONDARY
[deg] Pointing RA	0	229.0397802231099
[deg] Pointing Dec	0	-48.98833391445627
[deg] Pointing Roll	0.0	351.1782265518311
[mm] SIM focus pos	-0.782348	-0.6828225247311905
[mm] SIM defocus	0	0.8505141146731063
[mm] SIM translation stage pos	-233.592463	250.466033080201
[mm] SIM translation stage offset	0	-0.01005468664627074
[s] Observation start time (MET)	169548794.087884	169548793.06317
Observation start date	2003-05-17T08:53:14	2003-05-17T08:53:13
[s] Observation end time (MET)	169571803.288858	169571802.26415
Observation end date	2003-05-17T15:16:43	2003-05-17T15:16:42
Read mode	TIMED	TIMED

Parameter	Planned	Actual
Obspar format version number	7	7
Obspar file type	PREDICTED	ACTUAL
Obspar update status	NONE	UPDATED
On-chip summing requested	N	N
Subarray requested	NONE	NONE
Alternating exposures requested	N	N
[s] Primary exposure time	0.000000	3.2

2.3 Star Slots

2.4 FID Slots

A Summary

A.1 Status

V&V Scientist	Jen Lauer
V&V Date (YYYY-MM-DD)	2012.12.06
V&V Edition	1
V&V Disposition and Status	OK
V&V Charge Time	8.4633686517179

A.2 Comments