

V&V Reference Report

L2 ASCDS Version : 7.6.8

Observation 60727 - L2 Version 001
Chandra X-Ray Center

L2 Processing Date : Aug 3 2006

Contents

1	Front	2
2	OBI	3
2.1	OBI	3
2.1.1	Images	3
2.1.2	Bias	3
2.1.3	Parameters	4
2.1.4	Events	4
2.2	Compared Parameters	5
2.3	Aspect	6
2.4	Star Slots	8
2.5	FID Slots	8
A	Summary	9
A.1	Status	9
A.2	Comments	9

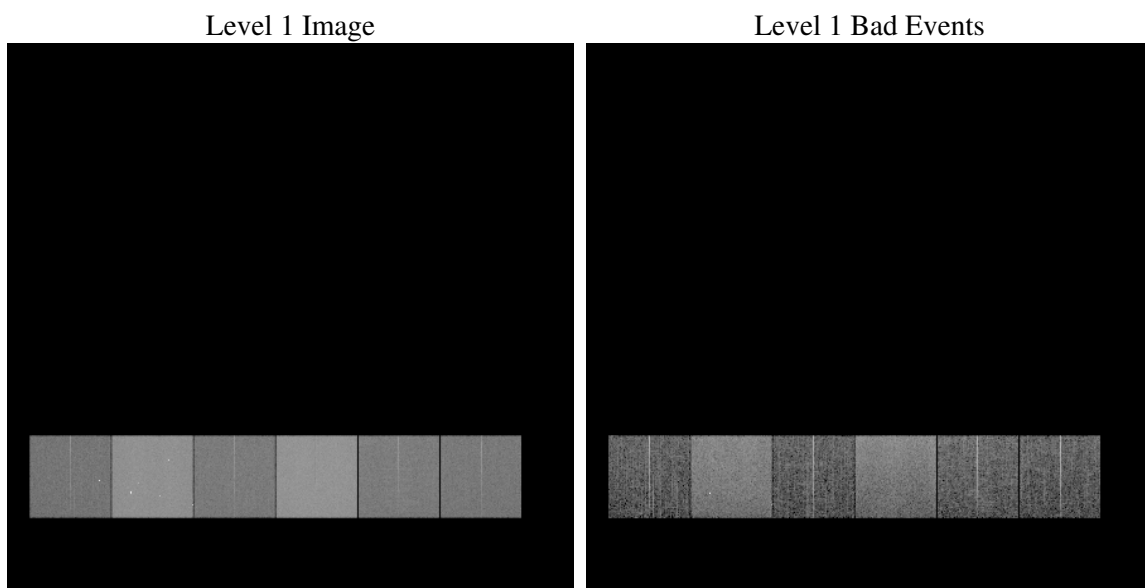
1 Front

seq_num	
obs_id	60727
title	ACIS-456789 diagnostics
observer	CHANDRA engineering request/realtime commanding
object	
dtcycle	0
cycle	P
ra_targ	0.0
dec_targ	0.0
ra_nom	296.19471305578
dec_nom	-70.871450536449
roll_nom	60.529536765485
revision	2
ontime	11385.518046916
livetime	11241.34776187
ontime4	5013.8769017458
ontime5	11382.277026832
ontime6	5642.5108964443
ontime7	11385.518046916
ontime8	5665.3182384968
ontime9	5405.8833242953
l2events	1660893

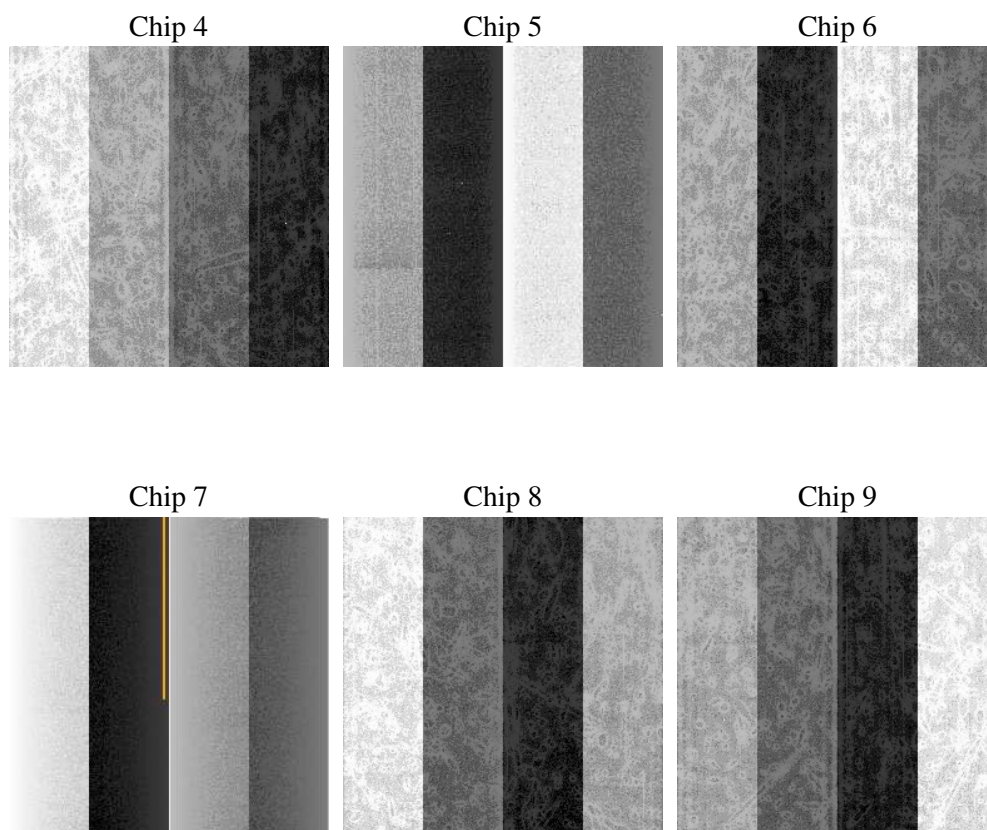
2 OBI

2.1 OBI

2.1.1 Images



2.1.2 Bias



2.1.3 Parameters

obi_num	0
ascdsver	7.6.8
caldbver	3.2.2
date	2006-08-03T09:58:18
revision	2

sched_exp_time	0.0
ontime	11385.64019236
ontime4	5013.8769017458
ontime5	11382.399172276
ontime6	5642.6330418885
ontime7	11385.64019236
ontime8	5665.3182384968
ontime9	5406.039293617
l1events	2063504

2.1.4 Events

	ccd 4	ccd 5	ccd 6	ccd 7	ccd 8	ccd 9
level 1 events	231441	493194	271936	532413	281459	253061
rejected events	38682	84490	38394	76109	43857	38063
rejected %	16%	17%	14%	14%	15%	15%

	ccd 4	ccd 5	ccd 6	ccd 7	ccd 8	ccd 9
grade 0 events	111981	52777	127673	83471	130406	118425
	48%	10%	46%	15%	46%	46%
grade 1 events	765	180	626	215	661	657
	0%	0%	0%	0%	0%	0%
grade 2 events	30769	191961	40360	137269	41347	37112
	13%	38%	14%	25%	14%	14%
grade 3 events	12870	14561	14454	33560	15224	13670
	5%	2%	5%	6%	5%	5%
grade 4 events	12541	13984	14372	33341	15297	13730
	5%	2%	5%	6%	5%	5%
grade 5 events	2321	9338	2752	9697	3243	2768
	1%	1%	1%	1%	1%	1%
grade 6 events	24816	135435	36683	168697	35436	32061
	10%	27%	13%	31%	12%	12%
grade 7 events	35378	74958	35016	66163	39845	34638
	15%	15%	12%	12%	14%	13%

2.2 Compared Parameters

Parameter	Planned	Actual	Parameter	Planned	Actual
Instrument	ACIS	ACIS	Obspar format version number	6	6
Detector	ACIS-456789	ACIS-456789	Obspar file type	PREDICTED	ACTUAL
Grating	NONE	NONE	Obspar update status	NONE	UPDATED
Data mode	FAINT	FAINT	On-chip summing requested	N	N
Observation mode	SECONDARY	SECONDARY	Subarray requested	NONE	NONE
Pointing RA	0	296.1947130557792	Alternating exposures requested	N	N
Pointing Dec	0	-70.8714505364492	Primary exposure time	0.000000	3.2
Pointing Roll	0.0	60.52953676548456			
SIM focus pos (mm)	-0.684267	-0.7809083437167272			
SIM defocus (mm)	0	0.7524282956875696			
SIM translation stage pos (mm)	-190.132523	250.466033080201			
SIM translation stage offset (mm)	0	-0.01005468664627074			
Observation start time	170414140.124583	170414139.09986			
Observation start date	2003-05-27T09:15:40	2003-05-27T09:15:39			
Observation end time	170428014.525172	170428013.50045			
Observation end date	2003-05-27T13:06:55	2003-05-27T13:06:53			
Read mode	TIMED	TIMED			

2.3 Aspect

2.4 Star Slots

2.5 FID Slots

A Summary

A.1 Status

V&V Scientist	Beth Sundheim
V&V Date (YYYY-MM-DD)	2006.08.03
V&V Edition	1
V&V Disposition and Status	OK
V&V Charge Time	11.385518

A.2 Comments