

# V&V Reference Report

## L2 ASCDS Version : 7.6.8.1

Observation 60714 - L2 Version 001  
Chandra X-Ray Center

L2 Processing Date : Aug 7 2006

## Contents

<b>1</b>	<b>Front</b>	<b>2</b>
<b>2</b>	<b>OBI</b>	<b>3</b>
2.1	OBI . . . . .	3
2.1.1	Images . . . . .	3
2.1.2	Bias . . . . .	3
2.1.3	Parameters . . . . .	4
2.1.4	Events . . . . .	4
2.2	Compared Parameters . . . . .	5
2.3	Aspect . . . . .	6
2.4	Star Slots . . . . .	8
2.5	FID Slots . . . . .	8
<b>A</b>	<b>Summary</b>	<b>9</b>
A.1	Status . . . . .	9
A.2	Comments . . . . .	9

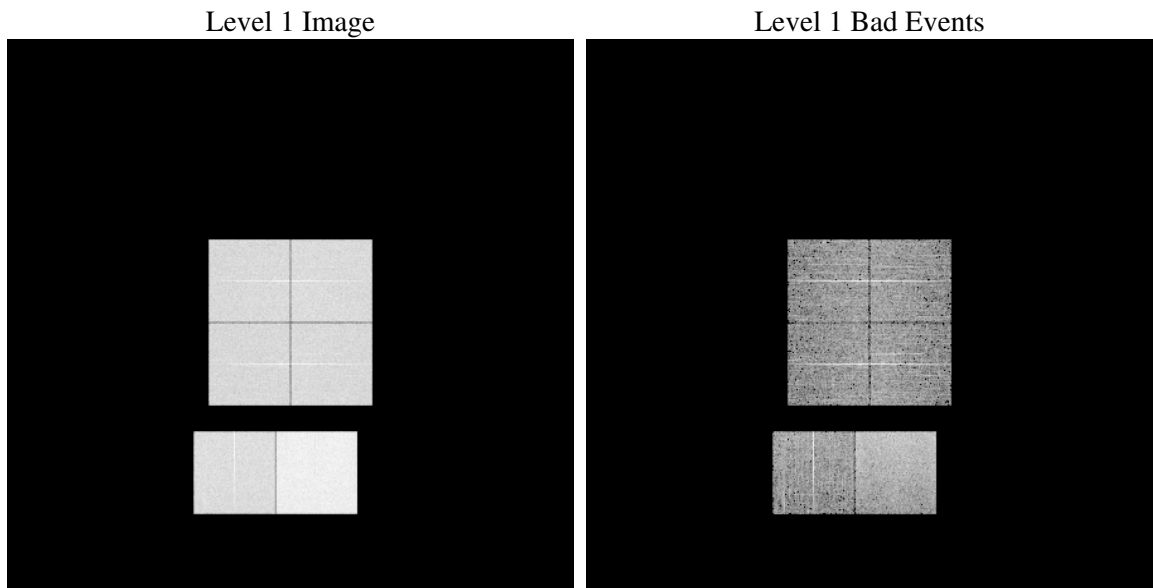
# 1 Front

seq_num	&#160
obs_id	60714
title	ACIS-012367 diagnostics
observer	CHANDRA engineering request/realtime commanding
object	&#160
dtcycle	0
cycle	P
ra_targ	0.0
dec_targ	0.0
ra_nom	267.00616396415
dec_nom	-35.971892170996
roll_nom	47.167319596854
revision	2
ontime	8457.599968493
livetime	8350.5047451366
ontime0	5009.2043058872
ontime1	5203.66333884
ontime2	4814.7454726994
ontime3	4905.4925900102
ontime6	5278.382479161
ontime7	8457.599968493
l2events	1264704

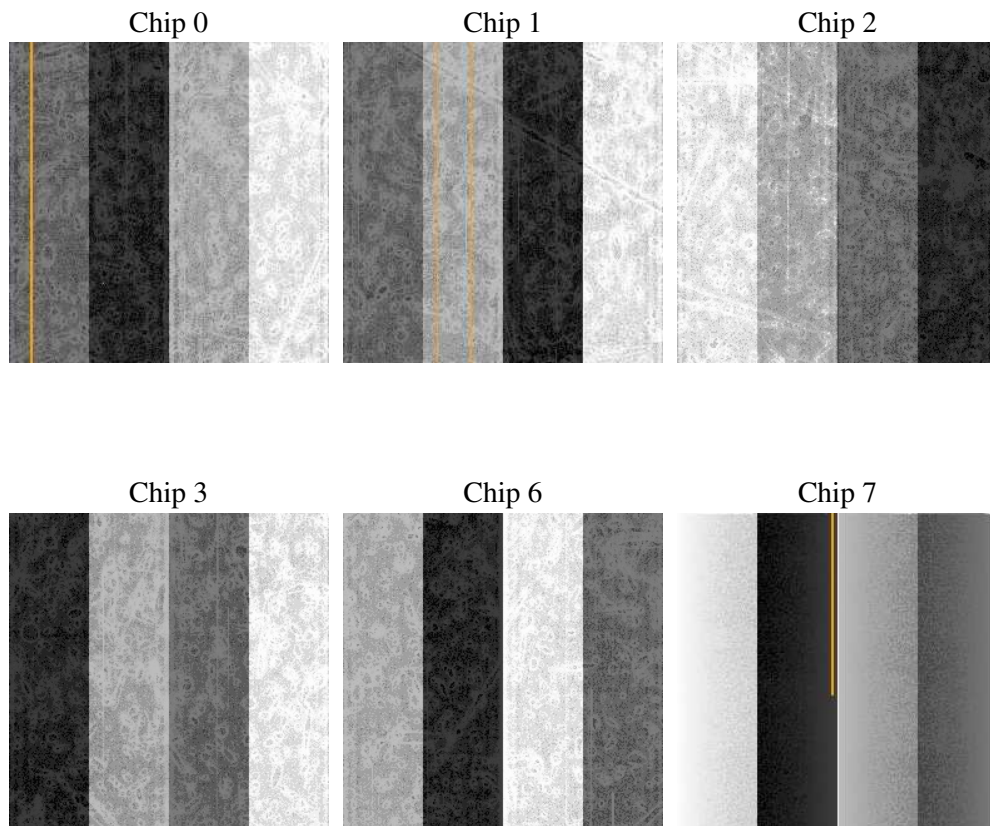
## 2 OBI

### 2.1 OBI

#### 2.1.1 Images



#### 2.1.2 Bias



### 2.1.3 Parameters

obi_num	2
ascdsver	7.6.8.1
caldbver	3.2.2
date	2006-08-07T04:39:17
revision	2

sched_exp_time	0.0
ontime	8465.5004290044
ontime0	5013.8637961447
ontime1	5208.3228290975
ontime2	4819.404943049
ontime3	4910.1520603597
ontime6	5286.1059457958
ontime7	8465.5004290044
l1events	1540578

### 2.1.4 Events

	ccd 0	ccd 1	ccd 2	ccd 3	ccd 6	ccd 7
level 1 events	224926	233927	218103	225021	248506	390095
rejected events	31131	32339	29925	32394	34435	56572
rejected %	13%	13%	13%	14%	13%	14%

	ccd 0	ccd 1	ccd 2	ccd 3	ccd 6	ccd 7
grade 0 events	107174	110936	106113	108780	116625	59202
	47%	47%	48%	48%	46%	15%
grade 1 events	585	502	595	583	537	147
	0%	0%	0%	0%	0%	0%
grade 2 events	33910	35945	31477	32589	36928	101290
	15%	15%	14%	14%	14%	25%
grade 3 events	12588	12900	12122	12613	13324	24343
	5%	5%	5%	5%	5%	6%
grade 4 events	12324	12875	12164	12603	13422	24017
	5%	5%	5%	5%	5%	6%
grade 5 events	2197	2221	2170	2228	2494	7212
	0%	0%	0%	0%	1%	1%
grade 6 events	27935	29057	26427	26156	34040	124927
	12%	12%	12%	11%	13%	32%
grade 7 events	28213	29491	27035	29469	31136	48957
	12%	12%	12%	13%	12%	12%

## 2.2 Compared Parameters

Parameter	Planned	Actual	Parameter	Planned	Actual
Instrument	ACIS	ACIS	Obspar format version number	6	6
Detector	ACIS-012367	ACIS-012367	Obspar file type	PREDICTED	ACTUAL
Grating	NONE	NONE	Obspar update status	NONE	UPDATED
Data mode	FAINT	FAINT	On-chip summing requested	N	N
Observation mode	SECONDARY	SECONDARY	Subarray requested	NONE	NONE
Pointing RA	0	267.0061639641536	Alternating exposures requested	N	N
Pointing Dec	0	-35.97189217099618	Primary exposure time	0.000000	3.2
Pointing Roll	0.0	47.16731959685366			
SIM focus pos (mm)	-0.782348	-0.7809083437167272			
SIM defocus (mm)	0	0.7524282956875696			
SIM translation stage pos (mm)	-233.592463	250.466033080201			
SIM translation stage offset (mm)	0	-0.01005468664627074			
Observation start time	171143608.055512	171143607.03079			
Observation start date	2003-06-04T19:53:28	2003-06-04T19:53:27			
Observation end time	171166990.356503	171166989.33179			
Observation end date	2003-06-05T02:23:10	2003-06-05T02:23:09			
Read mode	TIMED	TIMED			

## 2.3 Aspect



## 2.4 Star Slots

## 2.5 FID Slots



## A Summary

### A.1 Status

V&V Scientist	Jen Lauer
V&V Date (YYYY-MM-DD)	2006.08.07
V&V Edition	1
V&V Disposition and Status	OK
V&V Charge Time	8.45759996

### A.2 Comments