

V&V Reference Report

L2 ASCDS Version : 8.4.5

Observation 60696 - L2 Version 3
Chandra X-Ray Center

L2 Processing Date : Oct 29 2012

Contents

| | | |
|----------|-------------------------------|----------|
| 1 | Front | 2 |
| 2 | OBI | 3 |
| 2.1 | OBI | 3 |
| 2.1.1 | Images | 3 |
| 2.1.2 | Bias | 3 |
| 2.1.3 | Parameters | 4 |
| 2.1.4 | Events | 4 |
| 2.2 | Compared Parameters | 5 |
| 2.3 | Star Slots | 6 |
| 2.4 | FID Slots | 6 |
| A | Summary | 7 |
| A.1 | Status | 7 |
| A.2 | Comments | 7 |

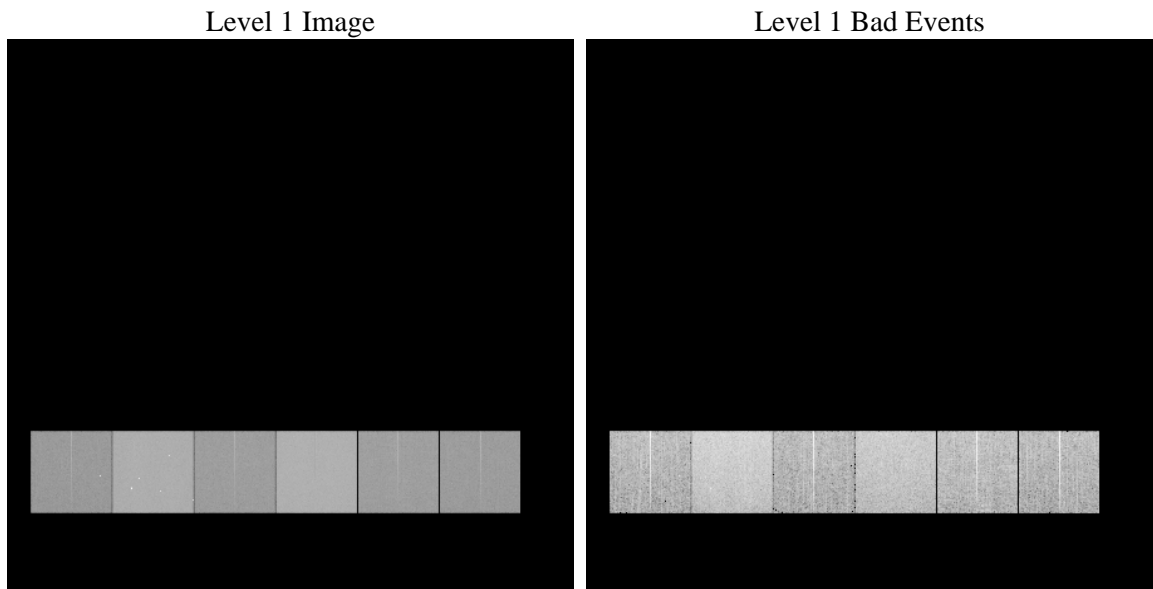
1 Front

| | | |
|----------|---|---|
| seq_num | | Sequence number |
| obs_id | 60696 | Observation id |
| title | ACIS-456789 diagnostics | Proposal title |
| observer | CHANDRA engineering request/realtime commanding | Principal investig |
| object | | Source name |
| dtcycle | 0 | |
| cycle | P | events from which exps? Prim/Second/Both |
| ra_targ | 0.0 | Observer's specified target RA [deg] |
| dec_targ | 0.0 | Observer's specified target Dec [deg] |
| ra_nom | 238.03523645723 | Nominal RA [deg] |
| dec_nom | -40.510073614506 | Nominal Dec [deg] |
| roll_nom | 306.52029803612 | Nominal Roll [deg] |
| revision | 3 | Processing version of data |
| ontime | 15758.499707848 | Sum of GTIs [s] |
| livetime | 15558.956095918 | Livetime [s] |
| ontime4 | 7348.0383152962 | Sum of GTIs [s] |
| ontime5 | 15758.458667845 | Sum of GTIs [s] |
| ontime6 | 7992.3781224489 | Sum of GTIs [s] |
| ontime7 | 15758.499707848 | Sum of GTIs [s] |
| ontime8 | 8173.8719002008 | Sum of GTIs [s] |
| ontime9 | 7840.0522328615 | Sum of GTIs [s] |
| l2events | 2337762 | Number of level 2 events |

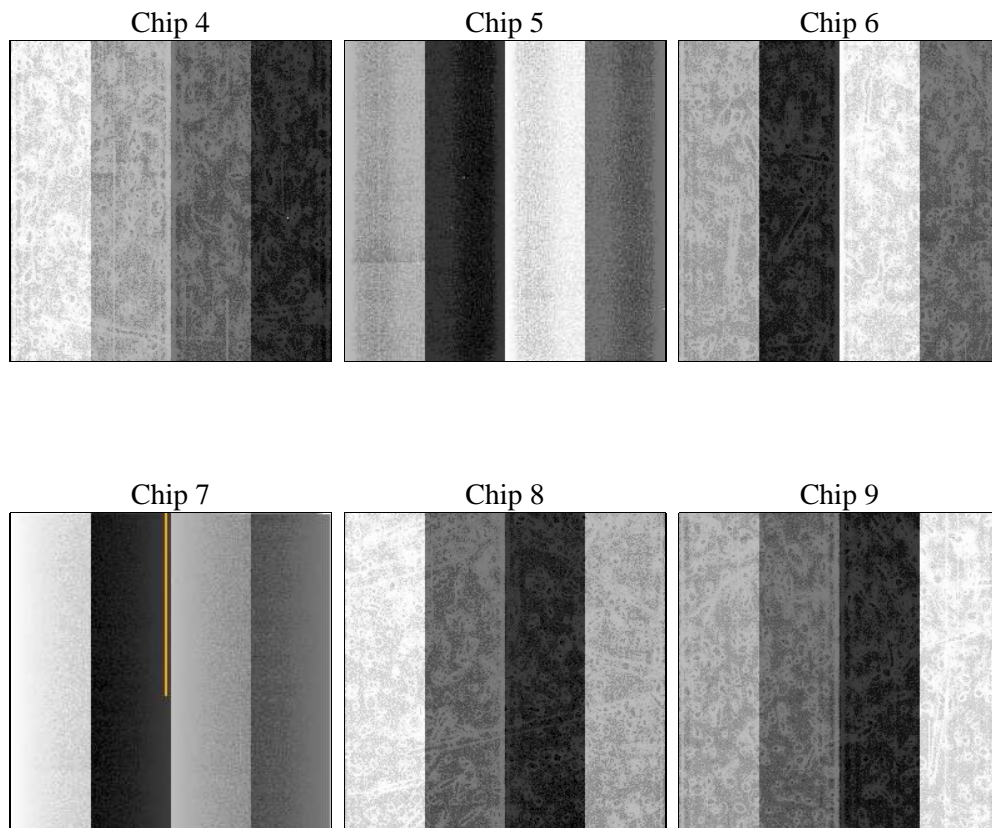
2 OBI

2.1 OBI

2.1.1 Images



2.1.2 Bias



2.1.3 Parameters

| | | | | | |
|----------|---------------------|--------------------------------|----------------|-----------------|---|
| obi_num | 0 | Obi number | sched_exp_time | 0.0 | [s] Scheduled observation exposure time |
| ascdsver | 8.4.5 | Processing system revision | ontime | 15758.499707848 | Sum of GTIs [s] |
| caldbver | 4.5.2 | | ontime4 | 7348.0383152962 | Sum of GTIs [s] |
| date | 2012-10-29T16:55:44 | Date and time of file creation | ontime5 | 15758.458667845 | Sum of GTIs [s] |
| revision | 3 | Processing version of data | ontime6 | 7992.3781224489 | Sum of GTIs [s] |
| | | | ontime7 | 15758.499707848 | Sum of GTIs [s] |
| | | | ontime8 | 8173.8719002008 | Sum of GTIs [s] |
| | | | ontime9 | 7840.0522328615 | Sum of GTIs [s] |
| | | | l1events | 2843357 | Number of level 1 events |

2.1.4 Events

| | ccd 4 | ccd 5 | ccd 6 | ccd 7 | ccd 8 | ccd 9 | | ccd 4 | ccd 5 | ccd 6 | ccd 7 | ccd 8 | ccd 9 |
|-----------------|--------|--------|--------|--------|--------|--------|----------------|--------|--------|--------|--------|--------|--------|
| level 1 events | 329156 | 667107 | 375236 | 719838 | 395187 | 356833 | grade 0 events | 162258 | 141096 | 177986 | 160562 | 184388 | 169142 |
| rejected events | 51014 | 95797 | 49591 | 77910 | 60480 | 51287 | | 49% | 21% | 47% | 22% | 46% | 47% |
| rejected % | 15% | 14% | 13% | 10% | 15% | 14% | grade 1 events | 1073 | 491 | 845 | 442 | 933 | 915 |
| | | | | | | | | 0% | 0% | 0% | 0% | 0% | 0% |
| | | | | | | | grade 2 events | 44759 | 198919 | 56411 | 141710 | 58310 | 52577 |
| | | | | | | | | 13% | 29% | 15% | 19% | 14% | 14% |
| | | | | | | | grade 3 events | 18431 | 36471 | 20306 | 64571 | 21628 | 19338 |
| | | | | | | | | 5% | 5% | 5% | 8% | 5% | 5% |
| | | | | | | | grade 4 events | 18039 | 36512 | 20265 | 64472 | 21409 | 19237 |
| | | | | | | | | 5% | 5% | 5% | 8% | 5% | 5% |
| | | | | | | | grade 5 events | 3153 | 16746 | 3793 | 15111 | 4444 | 3820 |
| | | | | | | | | 0% | 2% | 1% | 2% | 1% | 1% |
| | | | | | | | grade 6 events | 34778 | 158451 | 50677 | 210732 | 48972 | 45252 |
| | | | | | | | | 10% | 23% | 13% | 29% | 12% | 12% |
| | | | | | | | grade 7 events | 46665 | 78421 | 44953 | 62238 | 55103 | 46552 |
| | | | | | | | | 14% | 11% | 11% | 8% | 13% | 13% |

2.2 Compared Parameters

| Parameter | Planned | Actual | Parameter | Planned | Actual |
|-----------------------------------|---------------------|----------------------|---------------------------------|-----------|---------|
| Instrument | ACIS | ACIS | Obspar format version number | 7 | 7 |
| Detector | ACIS-456789 | ACIS-456789 | Obspar file type | PREDICTED | ACTUAL |
| Grating | NONE | NONE | Obspar update status | NONE | UPDATED |
| Data mode | FAINT | FAINT | On-chip summing requested | N | N |
| Observation mode | SECONDARY | SECONDARY | Subarray requested | NONE | NONE |
| [deg] Pointing RA | 0 | 238.0352364572256 | Alternating exposures requested | N | N |
| [deg] Pointing Dec | 0 | -40.51007361450648 | [s] Primary exposure time | 0.000000 | 3.2 |
| [deg] Pointing Roll | 0.0 | 306.5202980361174 | | | |
| [mm] SIM focus pos | -0.684267 | -0.6828225247311905 | | | |
| [mm] SIM defocus | 0 | 0.8505141146731063 | | | |
| [mm] SIM translation stage pos | -190.132523 | 250.466033080201 | | | |
| [mm] SIM translation stage offset | 0 | -0.01005468664627074 | | | |
| [s] Observation start time (MET) | 171786114.982772 | 171786113.95807 | | | |
| Observation start date | 2003-06-12T06:21:55 | 2003-06-12T06:21:53 | | | |
| [s] Observation end time (MET) | 171808445.63372 | 171808444.60902 | | | |
| Observation end date | 2003-06-12T12:34:06 | 2003-06-12T12:34:04 | | | |
| Read mode | TIMED | TIMED | | | |

2.3 Star Slots

2.4 FID Slots

A Summary

A.1 Status

| | |
|----------------------------|-----------------|
| V&V Scientist | Jen Lauer |
| V&V Date (YYYY-MM-DD) | 2012.12.06 |
| V&V Edition | 1 |
| V&V Disposition and Status | OK |
| V&V Charge Time | 15.758499707848 |

A.2 Comments