

# V&V Reference Report

## L2 ASCDS Version : 7.6.8.1

Observation 60696 - L2 Version 001  
Chandra X-Ray Center

L2 Processing Date : Aug 7 2006

## Contents

<b>1</b>	<b>Front</b>	<b>2</b>
<b>2</b>	<b>OBI</b>	<b>3</b>
2.1	OBI . . . . .	3
2.1.1	Images . . . . .	3
2.1.2	Bias . . . . .	3
2.1.3	Parameters . . . . .	4
2.1.4	Events . . . . .	4
2.2	Compared Parameters . . . . .	5
2.3	Aspect . . . . .	6
2.4	Star Slots . . . . .	8
2.5	FID Slots . . . . .	8
<b>A</b>	<b>Summary</b>	<b>9</b>
A.1	Status . . . . .	9
A.2	Comments . . . . .	9

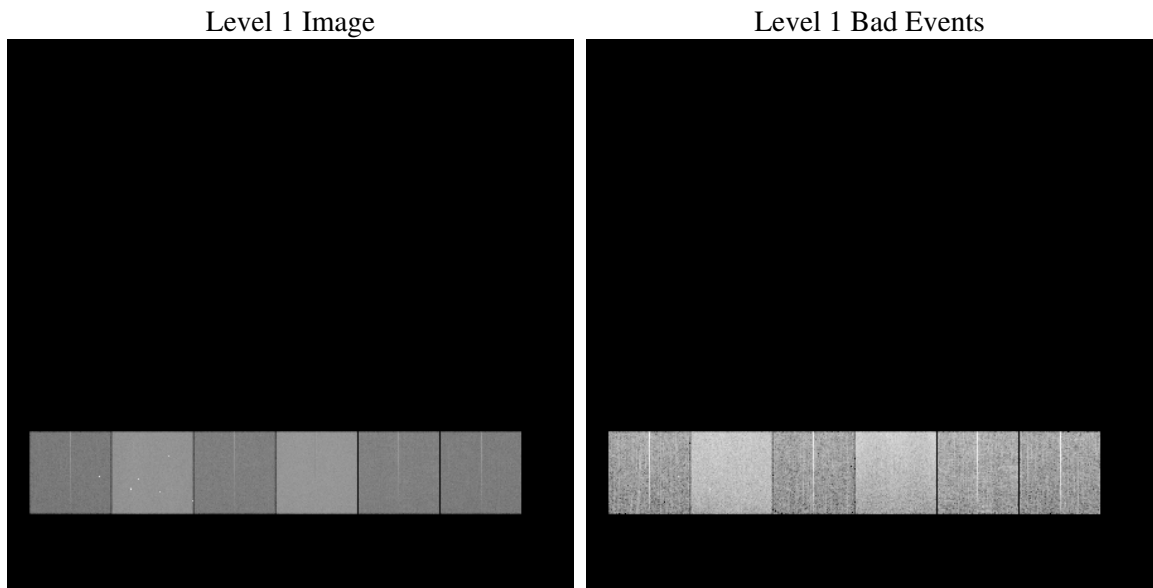
# 1 Front

seq_num	&#160
obs_id	60696
title	ACIS-456789 diagnostics
observer	CHANDRA engineering request/realtime commanding
object	&#160
dtcycle	0
cycle	P
ra_targ	0.0
dec_targ	0.0
ra_nom	238.03521474393
dec_nom	-40.510051273766
roll_nom	306.52028392359
revision	2
ontime	15759.999941289
livetime	15560.4373325
ontime4	7349.6383152902
ontime5	15759.999941289
ontime6	7992.3604359031
ontime7	15759.999941289
ontime8	8173.8719002008
ontime9	7839.9114263058
l2events	2299677

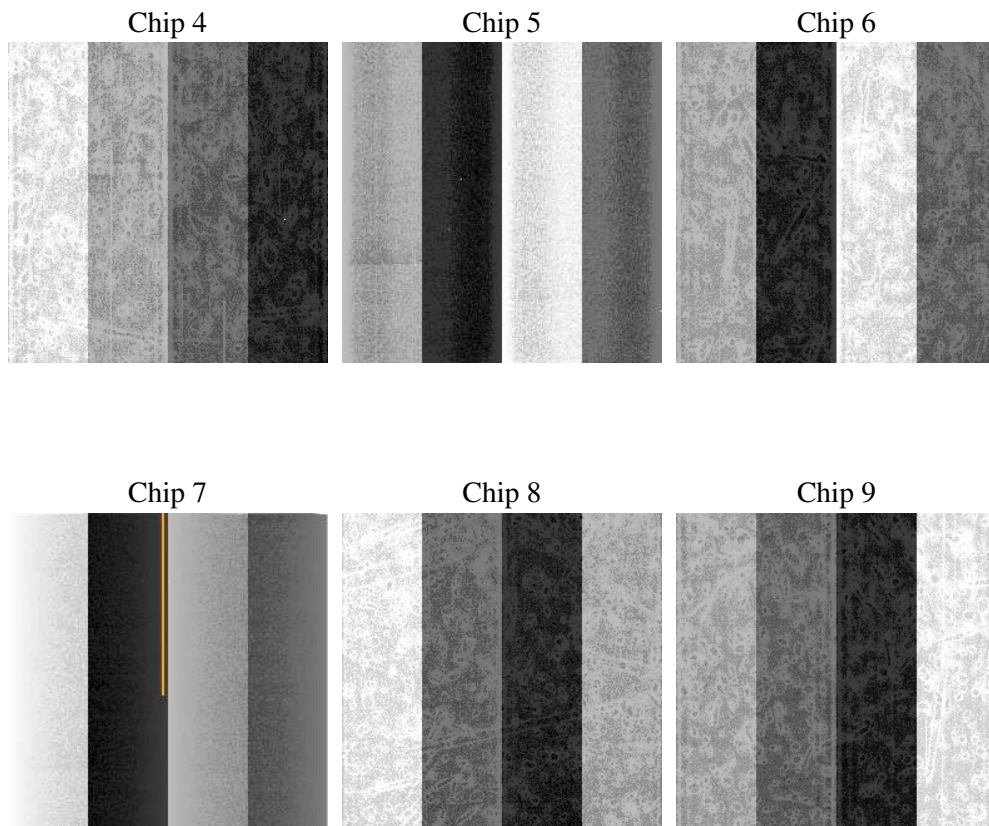
## 2 OBI

### 2.1 OBI

#### 2.1.1 Images



#### 2.1.2 Bias



### 2.1.3 Parameters

obi_num	0
ascdsver	7.6.8.1
caldbver	3.2.2
date	2006-08-07T06:57:11
revision	2

sched_exp_time	0.0
ontime	15760.997469425
ontime4	7350.6591968834
ontime5	15760.997469425
ontime6	7992.3781224489
ontime7	15760.997469425
ontime8	8173.8719002008
ontime9	7840.0522328615
l1events	2843357

### 2.1.4 Events

	ccd 4	ccd 5	ccd 6	ccd 7	ccd 8	ccd 9
level 1 events	329156	667107	375236	719838	395187	356833
rejected events	50891	111417	49591	101078	60480	51287
rejected %	15%	16%	13%	14%	15%	14%

	ccd 4	ccd 5	ccd 6	ccd 7	ccd 8	ccd 9
grade 0 events	162258	74035	177985	112372	184387	169141
	49%	11%	47%	15%	46%	47%
grade 1 events	1073	265	845	292	933	915
	0%	0%	0%	0%	0%	0%
grade 2 events	44759	259294	56412	186296	58311	52578
	13%	38%	15%	25%	14%	14%
grade 3 events	18431	19402	20306	45655	21628	19338
	5%	2%	5%	6%	5%	5%
grade 4 events	18039	19293	20264	45592	21409	19237
	5%	2%	5%	6%	5%	5%
grade 5 events	3153	12305	3793	13155	4444	3820
	0%	1%	1%	1%	1%	1%
grade 6 events	34778	183666	50678	228845	48972	45252
	10%	27%	13%	31%	12%	12%
grade 7 events	46665	98847	44953	87631	55103	46552
	14%	14%	11%	12%	13%	13%

## 2.2 Compared Parameters

Parameter	Planned	Actual	Parameter	Planned	Actual
Instrument	ACIS	ACIS	Obspar format version number	6	6
Detector	ACIS-456789	ACIS-456789	Obspar file type	PREDICTED	ACTUAL
Grating	NONE	NONE	Obspar update status	NONE	UPDATED
Data mode	FAINT	FAINT	On-chip summing requested	N	N
Observation mode	SECONDARY	SECONDARY	Subarray requested	NONE	NONE
Pointing RA	0	238.0352147439327	Alternating exposures requested	N	N
Pointing Dec	0	-40.51005127376577	Primary exposure time	0.000000	3.2
Pointing Roll	0.0	306.5202839235923			
SIM focus pos (mm)	-0.684267	-0.6828225247311905			
SIM defocus (mm)	0	0.8505141146731063			
SIM translation stage pos (mm)	-190.132523	250.466033080201			
SIM translation stage offset (mm)	0	-0.01005468664627074			
Observation start time	171786114.982772	171786113.95807			
Observation start date	2003-06-12T06:21:55	2003-06-12T06:21:53			
Observation end time	171808445.63372	171808444.60902			
Observation end date	2003-06-12T12:34:06	2003-06-12T12:34:04			
Read mode	TIMED	TIMED			

## 2.3 Aspect



## **2.4 Star Slots**

## **2.5 FID Slots**



## A Summary

### A.1 Status

V&V Scientist	Jen Lauer
V&V Date (YYYY-MM-DD)	2006.08.07
V&V Edition	1
V&V Disposition and Status	OK
V&V Charge Time	15.7599999

### A.2 Comments