

# V&V Reference Report

## L2 ASCDS Version : 7.6.8.1

Observation 60681 - L2 Version 001  
Chandra X-Ray Center

L2 Processing Date : Aug 10 2006

## Contents

<b>1</b>	<b>Front</b>	<b>2</b>
<b>2</b>	<b>OBI</b>	<b>3</b>
2.1	OBI . . . . .	3
2.1.1	Images . . . . .	3
2.1.2	Bias . . . . .	3
2.1.3	Parameters . . . . .	4
2.1.4	Events . . . . .	4
2.2	Compared Parameters . . . . .	5
2.3	Aspect . . . . .	6
2.4	Star Slots . . . . .	8
2.5	FID Slots . . . . .	8
<b>A</b>	<b>Summary</b>	<b>9</b>
A.1	Status . . . . .	9
A.2	Comments . . . . .	9

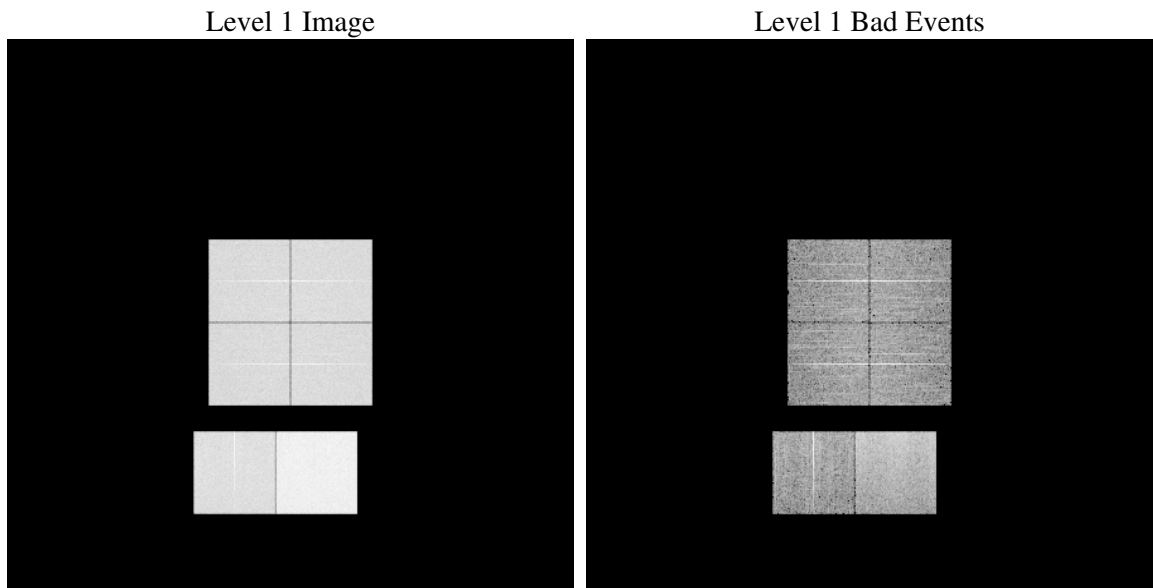
# 1 Front

seq_num	&#160
obs_id	60681
title	ACIS-012367 diagnostics
observer	CHANDRA engineering request/realtime commanding
object	&#160
dtcycle	0
cycle	P
ra_targ	0.0
dec_targ	0.0
ra_nom	30.976340435064
dec_nom	74.027855696742
roll_nom	70.3361258539
revision	2
ontime	12207.746592879
livetime	12053.164754898
ontime0	7288.0034896433
ontime1	7414.4415816963
ontime2	6983.4330536723
ontime3	7135.5944242179
ontime6	7728.8984731734
ontime7	12207.746592879
l2events	1832922

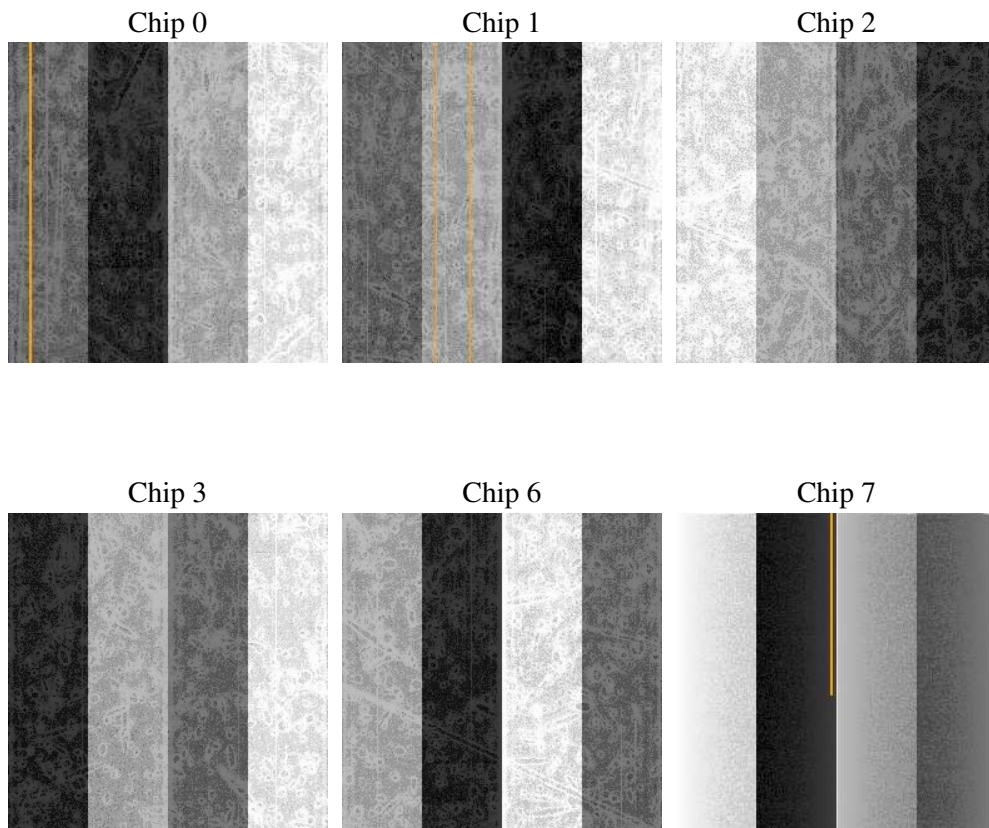
## 2 OBI

### 2.1 OBI

#### 2.1.1 Images



#### 2.1.2 Bias



### 2.1.3 Parameters

obi_num	1
ascdsver	7.6.8.1
caldbver	3.2.2
date	2006-08-10T14:34:43
revision	2

sched_exp_time	0.0
ontime	12208.842038929
ontime0	7289.0578956902
ontime1	7415.4549477398
ontime2	6984.4053797126
ontime3	7136.7309102714
ontime6	7729.8297592402
ontime7	12208.842038929
l1events	2210080

### 2.1.4 Events

	ccd 0	ccd 1	ccd 2	ccd 3	ccd 6	ccd 7
level 1 events	323750	330087	317279	323120	361876	553968
rejected events	40986	42223	42982	43165	46356	75408
rejected %	12%	12%	13%	13%	12%	13%

	ccd 0	ccd 1	ccd 2	ccd 3	ccd 6	ccd 7
grade 0 events	156613	157913	153775	157679	171700	87787
	48%	47%	48%	48%	47%	15%
grade 1 events	786	671	854	820	779	215
	0%	0%	0%	0%	0%	0%
grade 2 events	49176	50851	46155	47691	54687	143512
	15%	15%	14%	14%	15%	25%
grade 3 events	18018	18394	18100	17904	19356	35661
	5%	5%	5%	5%	5%	6%
grade 4 events	17987	18227	17769	18019	19764	35118
	5%	5%	5%	5%	5%	6%
grade 5 events	2990	3061	2881	2969	3454	10112
	0%	0%	0%	0%	0%	1%
grade 6 events	40970	42479	38498	38662	50013	176482
	12%	12%	12%	11%	13%	31%
grade 7 events	37210	38491	39247	39376	42123	65081
	11%	11%	12%	12%	11%	11%

## 2.2 Compared Parameters

Parameter	Planned	Actual	Parameter	Planned	Actual
Instrument	ACIS	ACIS	Obspar format version number	6	6
Detector	ACIS-012367	ACIS-012367	Obspar file type	PREDICTED	ACTUAL
Grating	NONE	NONE	Obspar update status	NONE	UPDATED
Data mode	FAINT	FAINT	On-chip summing requested	N	N
Observation mode	SECONDARY	SECONDARY	Subarray requested	NONE	NONE
Pointing RA	0	30.97634043506358	Alternating exposures requested	N	N
Pointing Dec	0	74.02785569674191	Primary exposure time	0.000000	3.2
Pointing Roll	0.0	70.33612585389992			
SIM focus pos (mm)	-0.782348	-0.6828225247311905			
SIM defocus (mm)	0	0.8505141146731063			
SIM translation stage pos (mm)	-233.592463	250.466033080201			
SIM translation stage offset (mm)	0	-0.01005468664627074			
Observation start time	172932120.381483	172932119.35677			
Observation start date	2003-06-25T12:42:00	2003-06-25T12:41:59			
Observation end time	172956509.232519	172956508.20781			
Observation end date	2003-06-25T19:28:29	2003-06-25T19:28:28			
Read mode	TIMED	TIMED			

## 2.3 Aspect



## **2.4 Star Slots**

## **2.5 FID Slots**

## A Summary

### A.1 Status

V&V Scientist	Jen Lauer
V&V Date (YYYY-MM-DD)	2006.08.10
V&V Edition	1
V&V Disposition and Status	OK
V&V Charge Time	12.2077465

### A.2 Comments