

V&V Reference Report

L2 ASCDS Version : 8.4.5

Observation 60677 - L2 Version 3
Chandra X-Ray Center

L2 Processing Date : Oct 31 2012

Contents

1	Front	2
2	OBI	3
2.1	OBI	3
2.1.1	Images	3
2.1.2	Bias	3
2.1.3	Parameters	4
2.1.4	Events	4
2.2	Compared Parameters	5
2.3	Star Slots	6
2.4	FID Slots	6
A	Summary	7
A.1	Status	7
A.2	Comments	7

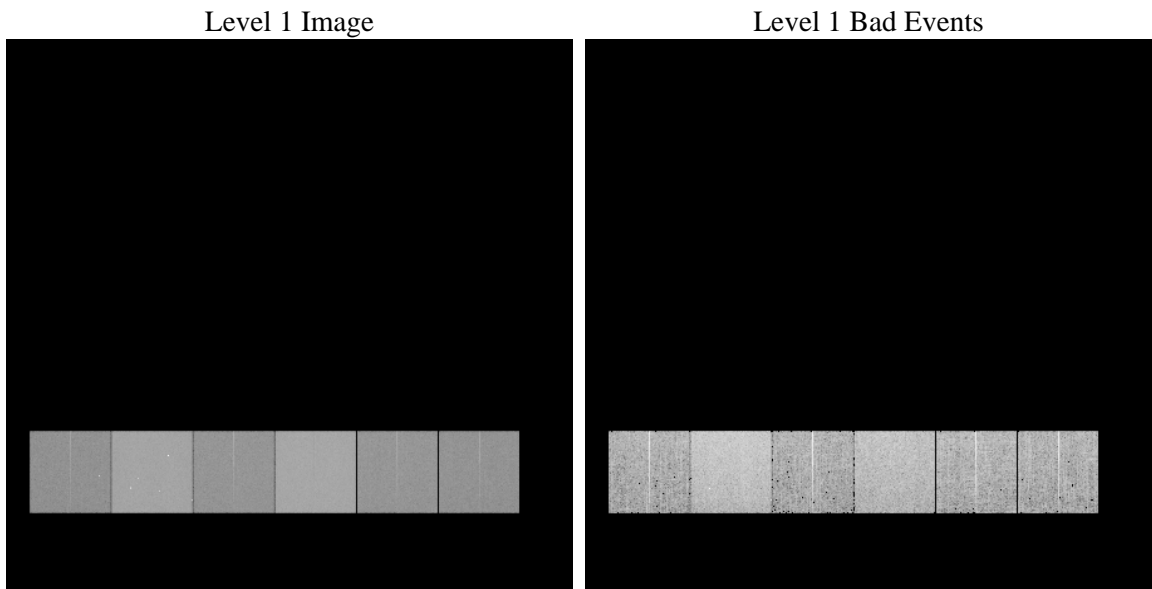
1 Front

seq_num	 	Sequence number
obs_id	60677	Observation id
title	ACIS-456789 diagnostics	Proposal title
observer	CHANDRA engineering request/realtime commanding	Principal investig
object	 	Source name
dtcycle	0	
cycle	P	events from which exps? Prim/Second/Both
ra_targ	0.0	Observer's specified target RA [deg]
dec_targ	0.0	Observer's specified target Dec [deg]
ra_nom	30.971472033685	Nominal RA [deg]
dec_nom	74.027489102199	Nominal Dec [deg]
roll_nom	73.084386230873	Nominal Roll [deg]
revision	3	Processing version of data
ontime	11430.399957418	Sum of GTIs [s]
livetime	11285.661350597	Livetime [s]
ontime4	5366.958943814	Sum of GTIs [s]
ontime5	11430.399957418	Sum of GTIs [s]
ontime6	5894.8243968785	Sum of GTIs [s]
ontime7	11430.399957418	Sum of GTIs [s]
ontime8	5927.6901276112	Sum of GTIs [s]
ontime9	5541.807425499	Sum of GTIs [s]
l2events	1706115	Number of level 2 events

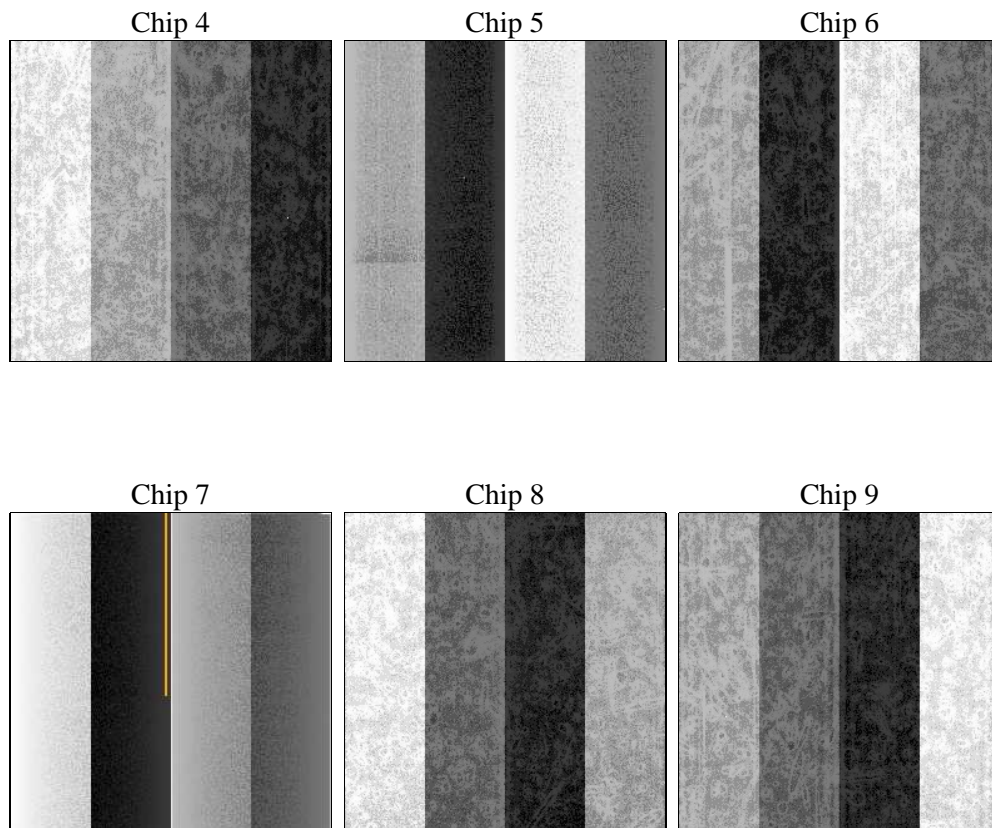
2 OBI

2.1 OBI

2.1.1 Images



2.1.2 Bias



2.1.3 Parameters

obi_num	1	Obi number	sched_exp_time	0.0	[s] Scheduled observation exposure time
ascdsver	8.4.5	Processing system revision	ontime	11430.399957418	Sum of GTIs [s]
caldsver	4.5.2	 	ontime4	5366.958943814	Sum of GTIs [s]
date	2012-10-31T05:03:59	Date and time of file creation	ontime5	11430.399957418	Sum of GTIs [s]
revision	3	Processing version of data	ontime6	5894.8243968785	Sum of GTIs [s]
			ontime7	11430.399957418	Sum of GTIs [s]
			ontime8	5927.6901276112	Sum of GTIs [s]
			ontime9	5541.807425499	Sum of GTIs [s]
			l1events	2069758	Number of level 1 events

2.1.4 Events

	ccd 4	ccd 5	ccd 6	ccd 7	ccd 8	ccd 9		ccd 4	ccd 5	ccd 6	ccd 7	ccd 8	ccd 9
level 1 events	241328	484490	279421	522377	285474	256668	grade 0 events	118892	101184	132445	116781	133683	120395
rejected events	36718	69014	36671	55818	41536	38353		49%	20%	47%	22%	46%	46%
rejected %	15%	14%	13%	10%	14%	14%	grade 1 events	792	365	582	330	591	652
								0%	0%	0%	0%	0%	0%
							grade 2 events	32568	146495	41813	102396	42481	37188
								13%	30%	14%	19%	14%	14%
							grade 3 events	13634	26538	14847	46910	15602	13970
								5%	5%	5%	8%	5%	5%
							grade 4 events	13310	25846	15090	46415	15717	13924
								5%	5%	5%	8%	5%	5%
							grade 5 events	2382	12068	2698	10813	3099	2775
								0%	2%	0%	2%	1%	1%
							grade 6 events	26206	115413	38555	154057	36455	32838
								10%	23%	13%	29%	12%	12%
							grade 7 events	33544	56581	33391	44675	37846	34926
								13%	11%	11%	8%	13%	13%

2.2 Compared Parameters

Parameter	Planned	Actual	Parameter	Planned	Actual
Instrument	ACIS	ACIS	Obspar format version number	7	7
Detector	ACIS-456789	ACIS-456789	Obspar file type	PREDICTED	ACTUAL
Grating	NONE	NONE	Obspar update status	NONE	UPDATED
Data mode	FAINT	FAINT	On-chip summing requested	N	N
Observation mode	SECONDARY	SECONDARY	Subarray requested	NONE	NONE
[deg] Pointing RA	0	30.97147203368467	Alternating exposures requested	N	N
[deg] Pointing Dec	0	74.02748910219938	[s] Primary exposure time	0.000000	3.2
[deg] Pointing Roll	0.0	73.08438623087285			
[mm] SIM focus pos	-0.684267	-0.7809083437167272			
[mm] SIM defocus	0	0.7524282956875696			
[mm] SIM translation stage pos	-190.132523	250.466033080201			
[mm] SIM translation stage offset	0	-0.01005468664627074			
[s] Observation start time (MET)	173160678.991202	173160677.96649			
Observation start date	2003-06-28T04:11:19	2003-06-28T04:11:17			
[s] Observation end time (MET)	173183214.64216	173183213.61745			
Observation end date	2003-06-28T10:26:55	2003-06-28T10:26:53			
Read mode	TIMED	TIMED			

2.3 Star Slots

2.4 FID Slots

A Summary

A.1 Status

V&V Scientist	Jen Lauer
V&V Date (YYYY-MM-DD)	2012.12.06
V&V Edition	1
V&V Disposition and Status	OK
V&V Charge Time	11.430399957418

A.2 Comments