

V&V Reference Report

L2 ASCDS Version : 7.6.8.1

Observation 60677 - L2 Version 001
Chandra X-Ray Center

L2 Processing Date : Aug 10 2006

Contents

1	Front	2
2	OBI	3
2.1	OBI	3
2.1.1	Images	3
2.1.2	Bias	3
2.1.3	Parameters	4
2.1.4	Events	4
2.2	Compared Parameters	5
2.3	Aspect	6
2.4	Star Slots	8
2.5	FID Slots	8
A	Summary	9
A.1	Status	9
A.2	Comments	9

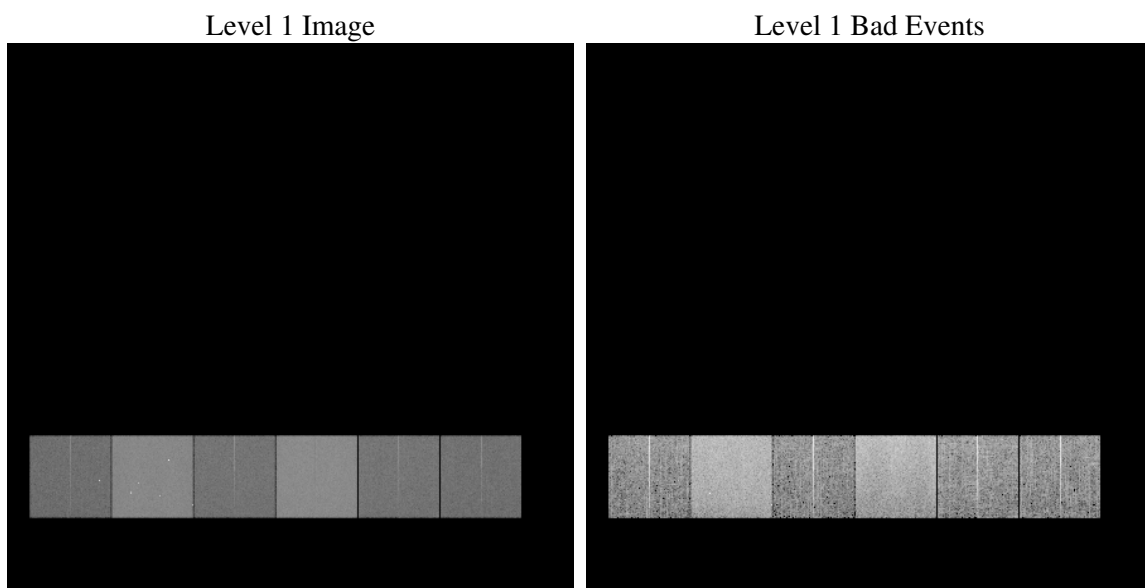
1 Front

seq_num	
obs_id	60677
title	ACIS-456789 diagnostics
observer	CHANDRA engineering request/realtime commanding
object	
dtcycle	0
cycle	P
ra_targ	0.0
dec_targ	0.0
ra_nom	30.971442548876
dec_nom	74.02746253576
roll_nom	73.084414569845
revision	2
ontime	11429.093378872
livetime	11284.371316735
ontime4	5365.35894382
ontime5	11429.134418875
ontime6	5893.5998983383
ontime7	11429.093378872
ontime8	5926.0901276171
ontime9	5540.2074255049
l2events	1676277

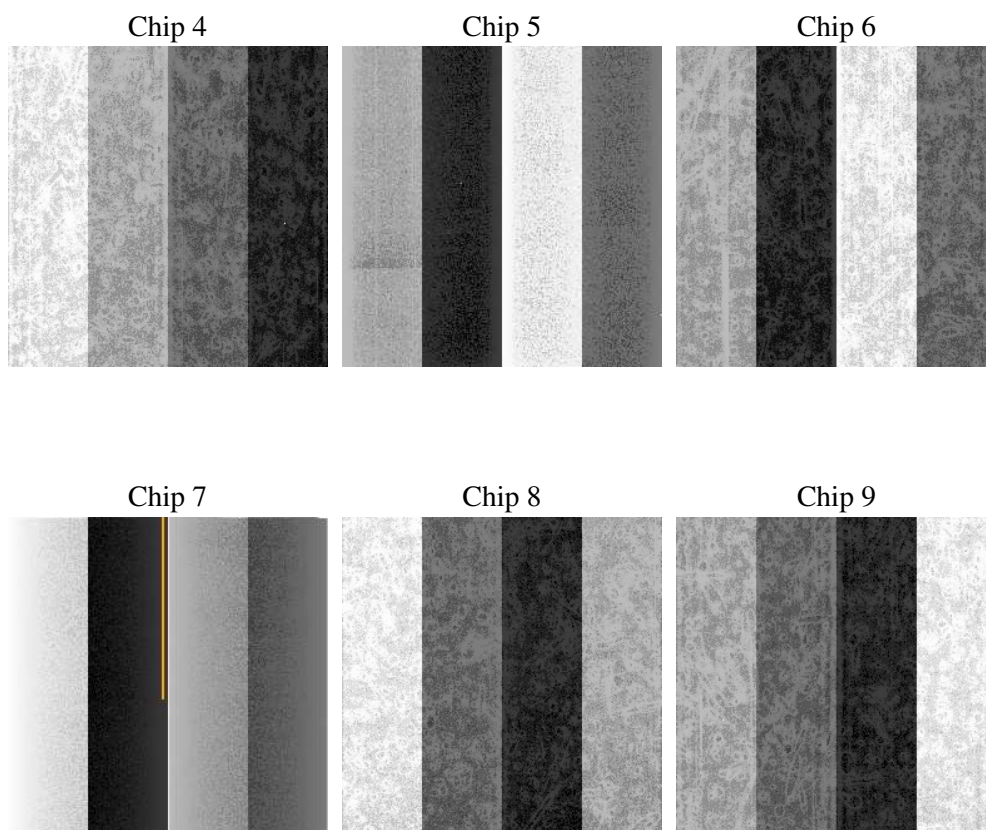
2 OBI

2.1 OBI

2.1.1 Images



2.1.2 Bias



2.1.3 Parameters

obi_num	1
ascdsver	7.6.8.1
caldsver	3.2.2
date	2006-08-10T17:04:08
revision	2

sched_exp_time	0.0
ontime	11431.004696012
ontime4	5367.14714095
ontime5	11431.004696012
ontime6	5895.4291354716
ontime7	11431.004696012
ontime8	5927.8372847736
ontime9	5542.1597826481
l1events	2069758

2.1.4 Events

	ccd 4	ccd 5	ccd 6	ccd 7	ccd 8	ccd 9
level 1 events	241328	484490	279421	522377	285474	256668
rejected events	36876	80776	36842	73802	41695	38497
rejected %	15%	16%	13%	14%	14%	14%

	ccd 4	ccd 5	ccd 6	ccd 7	ccd 8	ccd 9
grade 0 events	118892	52629	132445	80022	133683	120395
	49%	10%	47%	15%	46%	46%
grade 1 events	792	205	582	203	591	652
	0%	0%	0%	0%	0%	0%
grade 2 events	32568	189615	41813	136486	42481	37188
	13%	39%	14%	26%	14%	14%
grade 3 events	13634	14024	14847	32677	15602	13970
	5%	2%	5%	6%	5%	5%
grade 4 events	13310	13564	15090	32129	15717	13923
	5%	2%	5%	6%	5%	5%
grade 5 events	2382	8799	2698	9607	3099	2775
	0%	1%	0%	1%	1%	1%
grade 6 events	26206	134001	38555	167415	36455	32839
	10%	27%	13%	32%	12%	12%
grade 7 events	33544	71653	33391	63838	37846	34926
	13%	14%	11%	12%	13%	13%

2.2 Compared Parameters

Parameter	Planned	Actual	Parameter	Planned	Actual
Instrument	ACIS	ACIS	Obspar format version number	6	6
Detector	ACIS-456789	ACIS-456789	Obspar file type	PREDICTED	ACTUAL
Grating	NONE	NONE	Obspar update status	NONE	UPDATED
Data mode	FAINT	FAINT	On-chip summing requested	N	N
Observation mode	SECONDARY	SECONDARY	Subarray requested	NONE	NONE
Pointing RA	0	30.97144254887604	Alternating exposures requested	N	N
Pointing Dec	0	74.02746253575961	Primary exposure time	0.000000	3.2
Pointing Roll	0.0	73.08441456984474			
SIM focus pos (mm)	-0.684267	-0.7809083437167272			
SIM defocus (mm)	0	0.7524282956875696			
SIM translation stage pos (mm)	-190.132523	250.466033080201			
SIM translation stage offset (mm)	0	-0.01005468664627074			
Observation start time	173160678.991202	173160677.96649			
Observation start date	2003-06-28T04:11:19	2003-06-28T04:11:17			
Observation end time	173183214.64216	173183213.61745			
Observation end date	2003-06-28T10:26:55	2003-06-28T10:26:53			
Read mode	TIMED	TIMED			

2.3 Aspect

2.4 Star Slots

2.5 FID Slots

A Summary

A.1 Status

V&V Scientist	Beth Sundheim
V&V Date (YYYY-MM-DD)	2006.08.10
V&V Edition	1
V&V Disposition and Status	OK
V&V Charge Time	11.4290933

A.2 Comments