

# V&V Reference Report

## L2 ASCDS Version : 7.6.8.1

Observation 60670 - L2 Version 001  
Chandra X-Ray Center

L2 Processing Date : Aug 10 2006

## Contents

<b>1</b>	<b>Front</b>	<b>2</b>
<b>2</b>	<b>OBI</b>	<b>3</b>
2.1	OBI . . . . .	3
2.1.1	Images . . . . .	3
2.1.2	Bias . . . . .	3
2.1.3	Parameters . . . . .	4
2.1.4	Events . . . . .	4
2.2	Compared Parameters . . . . .	5
2.3	Aspect . . . . .	6
2.4	Star Slots . . . . .	8
2.5	FID Slots . . . . .	8
<b>A</b>	<b>Summary</b>	<b>9</b>
A.1	Status . . . . .	9
A.2	Comments . . . . .	9

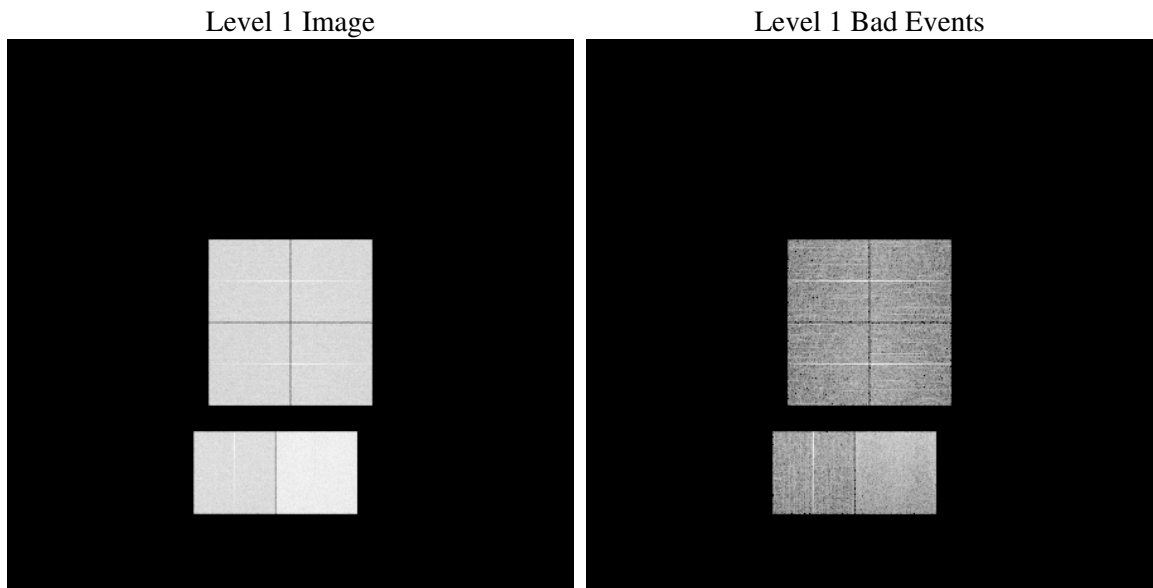
# 1 Front

seq_num	&#160
obs_id	60670
title	ACIS-012367 diagnostics
observer	CHANDRA engineering request/realtime commanding
object	&#160
dtcycle	0
cycle	P
ra_targ	0.0
dec_targ	0.0
ra_nom	137.18869824339
dec_nom	-25.026687159939
roll_nom	216.11110297768
revision	2
ontime	11263.013031483
livetime	11120.393978706
ontime0	6612.2701709569
ontime1	6878.0699031353
ontime2	6362.7961572409
ontime3	6573.2966272831
ontime6	7004.5515373647
ontime7	11263.013031483
l2events	1679314

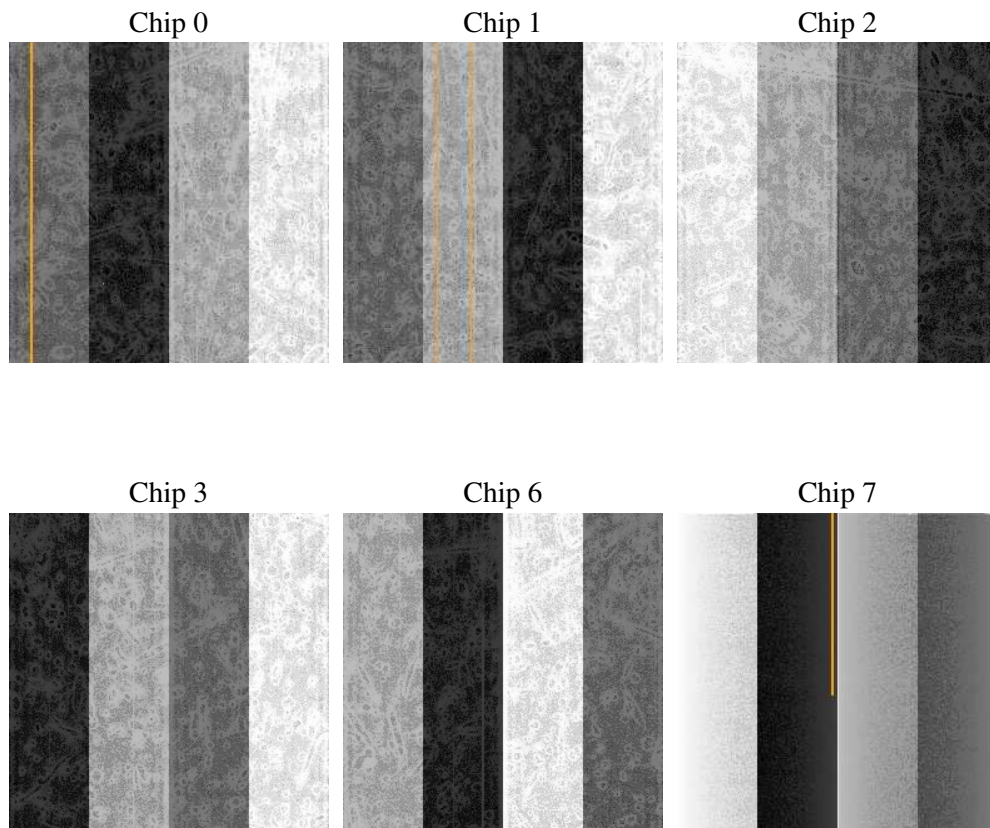
## 2 OBI

### 2.1 OBI

#### 2.1.1 Images



#### 2.1.2 Bias



### 2.1.3 Parameters

obi_num	1
ascdsver	7.6.8.1
caldbver	3.2.2
date	2006-08-10T18:41:58
revision	2

sched_exp_time	0.0
ontime	11265.710559756
ontime0	6614.9266592264
ontime1	6880.6853514016
ontime2	6365.3705655038
ontime3	6576.0351955593
ontime6	7007.0849056542
ontime7	11265.710559756
l1events	2042873

### 2.1.4 Events

	ccd 0	ccd 1	ccd 2	ccd 3	ccd 6	ccd 7
level 1 events	296004	307094	291133	301031	329949	517662
rejected events	40411	41341	40744	43443	45432	73746
rejected %	13%	13%	13%	14%	13%	14%

	ccd 0	ccd 1	ccd 2	ccd 3	ccd 6	ccd 7
grade 0 events	140846	145983	140273	144790	154321	80701
	47%	47%	48%	48%	46%	15%
grade 1 events	745	690	761	792	728	195
	0%	0%	0%	0%	0%	0%
grade 2 events	44614	47036	42141	43898	49006	133881
	15%	15%	14%	14%	14%	25%
grade 3 events	16402	16654	16166	16693	17780	33071
	5%	5%	5%	5%	5%	6%
grade 4 events	16654	16908	16414	16896	17726	32561
	5%	5%	5%	5%	5%	6%
grade 5 events	2925	2878	2725	3032	3255	9399
	0%	0%	0%	1%	0%	1%
grade 6 events	37182	39306	35533	35430	45810	163812
	12%	12%	12%	11%	13%	31%
grade 7 events	36636	37639	37120	39500	41323	64042
	12%	12%	12%	13%	12%	12%

## 2.2 Compared Parameters

Parameter	Planned	Actual	Parameter	Planned	Actual
Instrument	ACIS	ACIS	Obspar format version number	6	6
Detector	ACIS-012367	ACIS-012367	Obspar file type	PREDICTED	ACTUAL
Grating	NONE	NONE	Obspar update status	NONE	UPDATED
Data mode	FAINT	FAINT	On-chip summing requested	N	N
Observation mode	SECONDARY	SECONDARY	Subarray requested	NONE	NONE
Pointing RA	0	137.1886982433903	Alternating exposures requested	N	N
Pointing Dec	0	-25.02668715993851	Primary exposure time	0.000000	3.2
Pointing Roll	0.0	216.1111029776811			
SIM focus pos (mm)	-0.782348	-0.6828225247311905			
SIM defocus (mm)	0	0.8505141146731063			
SIM translation stage pos (mm)	-233.592463	250.466033080201			
SIM translation stage offset (mm)	0	-0.01005468664627074			
Observation start time	173846137.520367	173846136.49566			
Observation start date	2003-07-06T02:35:38	2003-07-06T02:35:36			
Observation end time	173887147.772113	173887146.74741			
Observation end date	2003-07-06T13:59:08	2003-07-06T13:59:06			
Read mode	TIMED	TIMED			

## 2.3 Aspect



## **2.4 Star Slots**

## **2.5 FID Slots**



## A Summary

### A.1 Status

V&V Scientist	Beth Sundheim
V&V Date (YYYY-MM-DD)	2006.08.10
V&V Edition	1
V&V Disposition and Status	OK
V&V Charge Time	11.263013

### A.2 Comments