

V&V Reference Report

L2 ASCDS Version : 8.4.5

Observation 60645 - L2 Version 3
Chandra X-Ray Center

L2 Processing Date : Nov 1 2012

Contents

1	Front	2
2	OBI	3
2.1	OBI	3
2.1.1	Images	3
2.1.2	Bias	3
2.1.3	Parameters	4
2.1.4	Events	4
2.2	Compared Parameters	5
2.3	Star Slots	6
2.4	FID Slots	6
A	Summary	7
A.1	Status	7
A.2	Comments	7

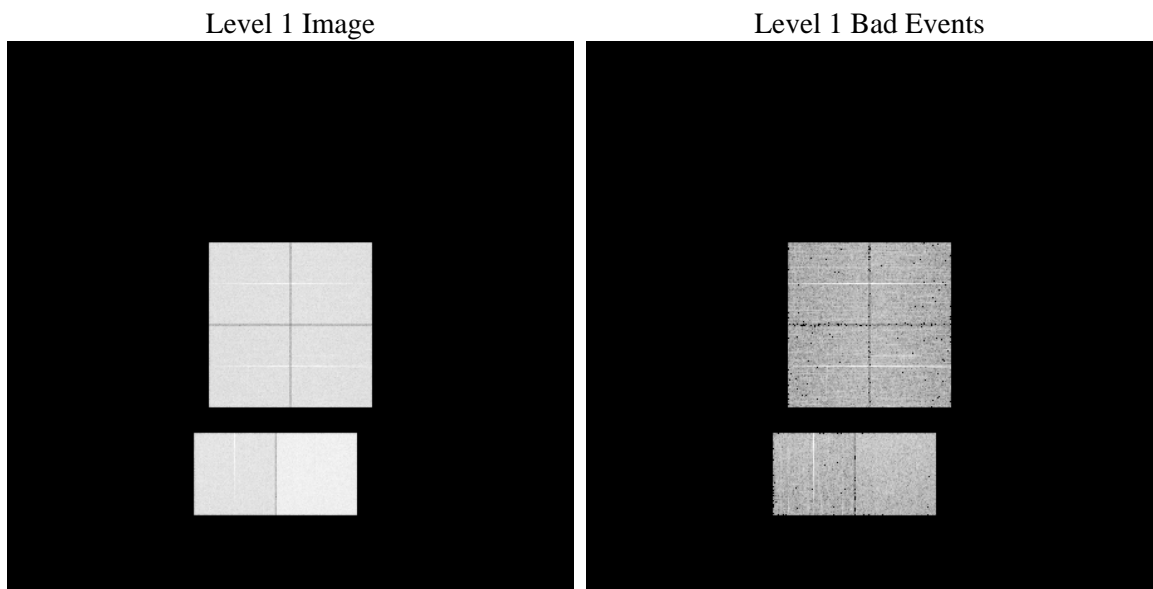
1 Front

seq_num	 	Sequence number
obs_id	60645	Observation id
title	ACIS-012367 diagnostics	Proposal title
observer	CHANDRA engineering request/realtime commanding	Principal investig
object	 	Source name
dtcycle	0	
cycle	P	events from which exps? Prim/Second/Both
ra_targ	0.0	Observer's specified target RA [deg]
dec_targ	0.0	Observer's specified target Dec [deg]
ra_nom	166.00170429238	Nominal RA [deg]
dec_nom	-4.0285694248924	Nominal Dec [deg]
roll_nom	240.53243546556	Nominal Roll [deg]
revision	3	Processing version of data
ontime	8460.2371303141	Sum of GTIs [s]
livetime	8353.1085136269	Livetime [s]
ontime0	5031.2583028972	Sum of GTIs [s]
ontime1	5146.7404839396	Sum of GTIs [s]
ontime2	4871.2574856877	Sum of GTIs [s]
ontime3	4995.6890924871	Sum of GTIs [s]
ontime6	5300.135045439	Sum of GTIs [s]
ontime7	8460.2371303141	Sum of GTIs [s]
l2events	1268045	Number of level 2 events

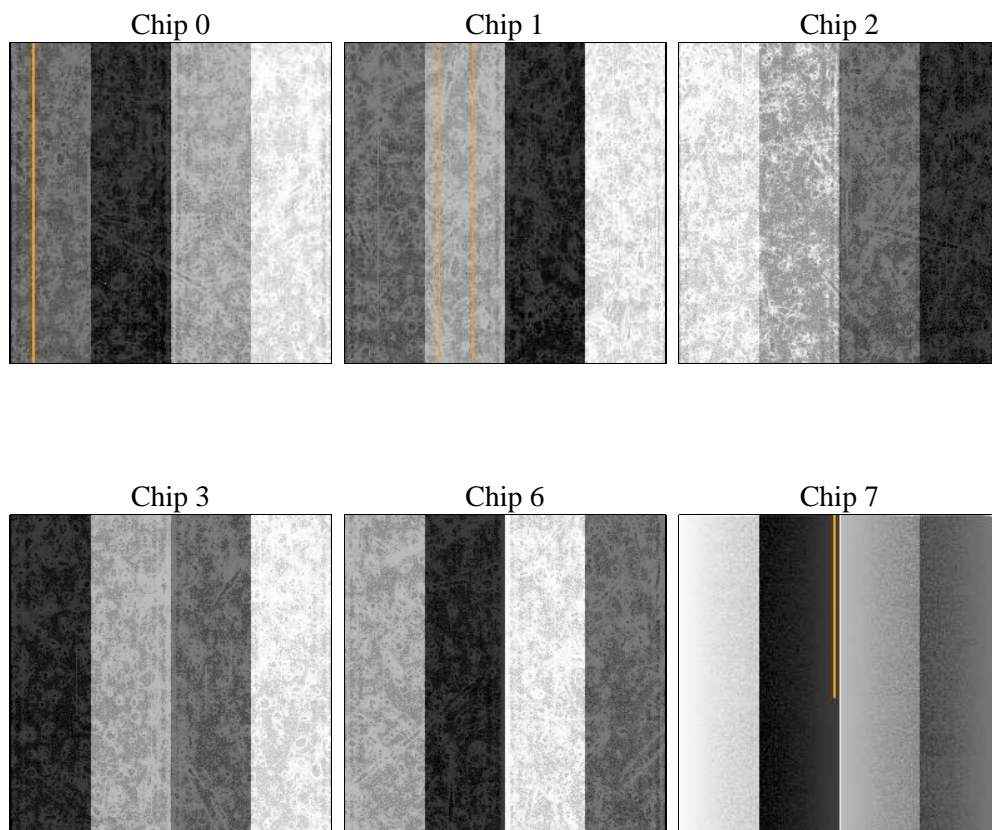
2 OBI

2.1 OBI

2.1.1 Images



2.1.2 Bias



2.1.3 Parameters

obi_num	0	Obi number	sched_exp_time	0.0	[s] Scheduled observation exposure time
ascdsver	8.4.5	Processing system revision	ontime	8460.2371303141	Sum of GTIs [s]
caldbver	4.5.2	 	ontime0	5031.2583028972	Sum of GTIs [s]
date	2012-11-01T08:50:17	Date and time of file creation	ontime1	5146.7404839396	Sum of GTIs [s]
revision	3	Processing version of data	ontime2	4871.2574856877	Sum of GTIs [s]
			ontime3	4995.6890924871	Sum of GTIs [s]
			ontime6	5300.135045439	Sum of GTIs [s]
			ontime7	8460.2371303141	Sum of GTIs [s]
			l1events	1541076	Number of level 1 events

2.1.4 Events

	ccd 0	ccd 1	ccd 2	ccd 3	ccd 6	ccd 7		ccd 0	ccd 1	ccd 2	ccd 3	ccd 6	ccd 7
level 1 events	225048	231116	221193	228731	250032	384956	grade 0 events	106295	108661	105563	109268	116205	84098
rejected events	32463	33136	32790	34536	36986	44074		47%	47%	47%	47%	46%	21%
rejected %	14%	14%	14%	15%	14%	11%	grade 1 events	586	505	585	622	558	199
								0%	0%	0%	0%	0%	0%
							grade 2 events	33381	35368	31817	33045	36851	74901
								14%	15%	14%	14%	14%	19%
							grade 3 events	12450	12435	12456	12550	13129	34346
								5%	5%	5%	5%	5%	8%
							grade 4 events	12378	12544	12279	12641	12987	34064
								5%	5%	5%	5%	5%	8%
							grade 5 events	2191	2215	2161	2284	2377	8287
								0%	0%	0%	0%	0%	2%
							grade 6 events	28185	28972	26288	26799	34001	113605
								12%	12%	11%	11%	13%	29%
							grade 7 events	29582	30416	30044	31522	33924	35456
								13%	13%	13%	13%	13%	9%

2.2 Compared Parameters

Parameter	Planned	Actual
Instrument	ACIS	ACIS
Detector	ACIS-012367	ACIS-012367
Grating	NONE	NONE
Data mode	FAINT	FAINT
Observation mode	SECONDARY	SECONDARY
[deg] Pointing RA	0	166.0017042923801
[deg] Pointing Dec	0	-4.028569424892436
[deg] Pointing Roll	0.0	240.5324354655552
[mm] SIM focus pos	-0.782348	-0.6828225247311905
[mm] SIM defocus	0	0.8505141146731063
[mm] SIM translation stage pos	-233.592463	250.466033080201
[mm] SIM translation stage offset	0	-0.01005468664627074
[s] Observation start time (MET)	174804846.71119	174804845.68648
Observation start date	2003-07-17T04:54:07	2003-07-17T04:54:05
[s] Observation end time (MET)	174827210.162141	174827209.13744
Observation end date	2003-07-17T11:06:50	2003-07-17T11:06:49
Read mode	TIMED	TIMED

Parameter	Planned	Actual
Obspar format version number	7	7
Obspar file type	PREDICTED	ACTUAL
Obspar update status	NONE	UPDATED
On-chip summing requested	N	N
Subarray requested	NONE	NONE
Alternating exposures requested	N	N
[s] Primary exposure time	0.000000	3.2

2.3 Star Slots

2.4 FID Slots

A Summary

A.1 Status

V&V Scientist	Jen Lauer
V&V Date (YYYY-MM-DD)	2012.12.06
V&V Edition	1
V&V Disposition and Status	OK
V&V Charge Time	8.4602371303141

A.2 Comments