

# V&V Reference Report

## L2 ASCDS Version : 7.6.8

Observation 60645 - L2 Version 001  
Chandra X-Ray Center

L2 Processing Date : Jul 14 2006

## Contents

<b>1</b>	<b>Front</b>	<b>2</b>
<b>2</b>	<b>OBI</b>	<b>3</b>
2.1	OBI . . . . .	3
2.1.1	Images . . . . .	3
2.1.2	Bias . . . . .	3
2.1.3	Parameters . . . . .	4
2.1.4	Events . . . . .	4
2.2	Compared Parameters . . . . .	5
2.3	Aspect . . . . .	6
2.4	Star Slots . . . . .	8
2.5	FID Slots . . . . .	8
<b>A</b>	<b>Summary</b>	<b>9</b>
A.1	Status . . . . .	9
A.2	Comments . . . . .	9

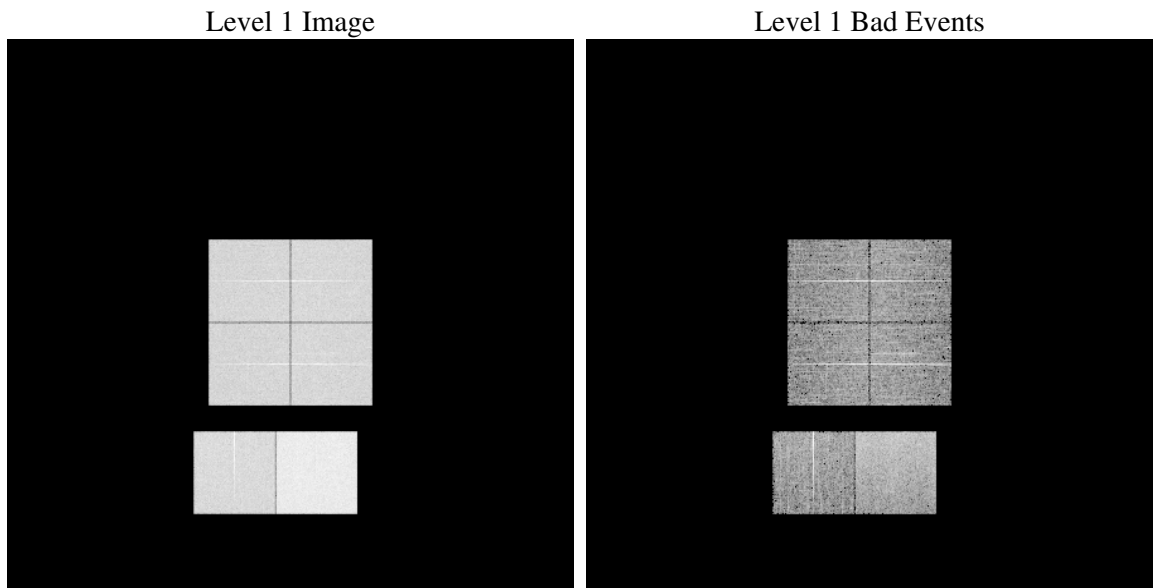
# 1 Front

seq_num	&#160
obs_id	60645
title	ACIS-012367 diagnostics
observer	CHANDRA engineering request/realtime commanding
object	&#160
dtcycle	0
cycle	P
ra_targ	0.0
dec_targ	0.0
ra_nom	166.00171800952
dec_nom	-4.0285452027226
roll_nom	240.53243642701
revision	2
ontime	8460.7999684811
livetime	8353.664224798
ontime0	5031.8621810675
ontime1	5145.7854021192
ontime2	4870.3434438705
ontime3	4996.2108906507
ontime6	5300.8620435894
ontime7	8460.7999684811
l2events	1254978

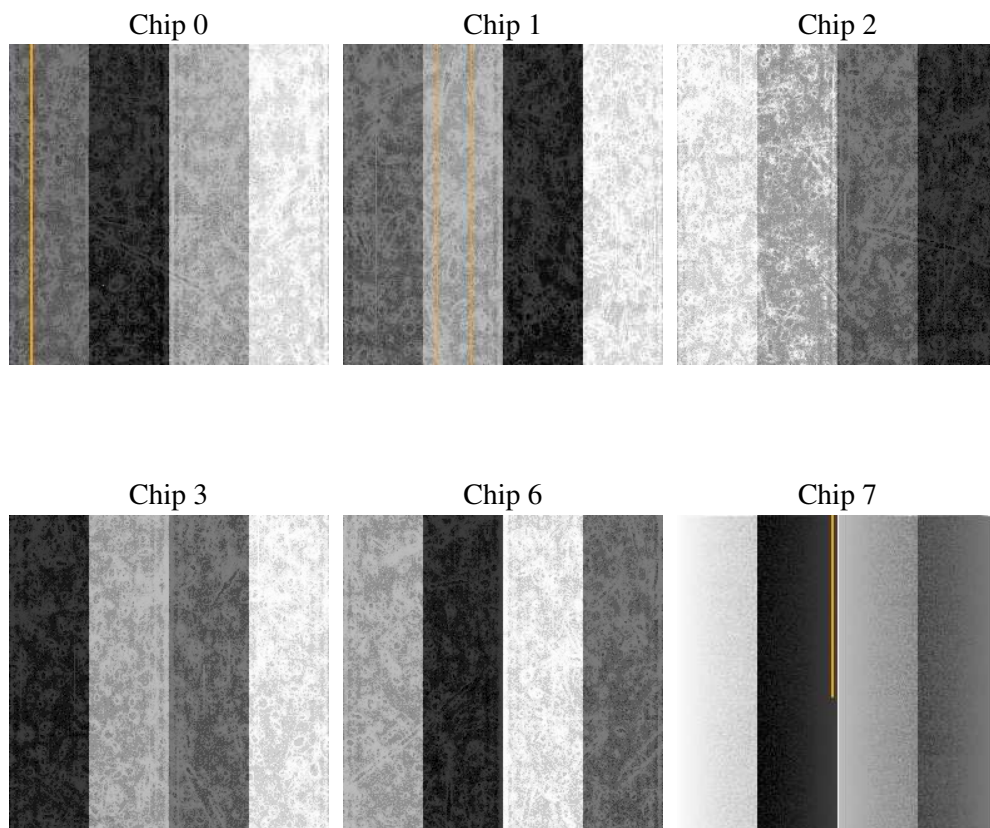
## 2 OBI

### 2.1 OBI

#### 2.1.1 Images



#### 2.1.2 Bias



### 2.1.3 Parameters

obi_num	0
ascdsver	7.6.8
caldbver	3.2.2
date	2006-07-14T18:26:36
revision	2

sched_exp_time	0.0
ontime	8462.2450904548
ontime0	5033.3073030412
ontime1	5146.7404839396
ontime2	4871.2574856877
ontime3	4997.6560126245
ontime6	5302.3071655631
ontime7	8462.2450904548
l1events	1541076

### 2.1.4 Events

	ccd 0	ccd 1	ccd 2	ccd 3	ccd 6	ccd 7
level 1 events	225048	231116	221193	228731	250032	384956
rejected events	32365	33140	32799	34431	36863	57598
rejected %	14%	14%	14%	15%	14%	14%

	ccd 0	ccd 1	ccd 2	ccd 3	ccd 6	ccd 7
grade 0 events	106265	108609	105534	109229	116125	56703
	47%	46%	47%	47%	46%	14%
grade 1 events	584	501	582	620	556	116
	0%	0%	0%	0%	0%	0%
grade 2 events	33410	35420	31845	33084	36932	100257
	14%	15%	14%	14%	14%	26%
grade 3 events	12433	12428	12444	12531	13114	23597
	5%	5%	5%	5%	5%	6%
grade 4 events	12367	12530	12266	12623	12970	23275
	5%	5%	5%	5%	5%	6%
grade 5 events	2192	2213	2164	2281	2367	7280
	0%	0%	0%	0%	0%	1%
grade 6 events	28208	28989	26305	26833	34028	123526
	12%	12%	11%	11%	13%	32%
grade 7 events	29589	30426	30053	31530	33940	50202
	13%	13%	13%	13%	13%	13%

## 2.2 Compared Parameters

Parameter	Planned	Actual	Parameter	Planned	Actual
Instrument	ACIS	ACIS	Obspar format version number	6	6
Detector	ACIS-012367	ACIS-012367	Obspar file type	PREDICTED	ACTUAL
Grating	NONE	NONE	Obspar update status	NONE	UPDATED
Data mode	FAINT	FAINT	On-chip summing requested	N	N
Observation mode	SECONDARY	SECONDARY	Subarray requested	NONE	NONE
Pointing RA	0	166.0017180095164	Alternating exposures requested	N	N
Pointing Dec	0	-4.028545202722561	Primary exposure time	0.000000	3.2
Pointing Roll	0.0	240.532436427014			
SIM focus pos (mm)	-0.782348	-0.6828225247311905			
SIM defocus (mm)	0	0.8505141146731063			
SIM translation stage pos (mm)	-233.592463	250.466033080201			
SIM translation stage offset (mm)	0	-0.01005468664627074			
Observation start time	174804846.71119	174804845.68648			
Observation start date	2003-07-17T04:54:07	2003-07-17T04:54:05			
Observation end time	174827210.162141	174827209.13744			
Observation end date	2003-07-17T11:06:50	2003-07-17T11:06:49			
Read mode	TIMED	TIMED			

## 2.3 Aspect



## **2.4 Star Slots**

## **2.5 FID Slots**



## A Summary

### A.1 Status

V&V Scientist	Beth Sundheim
V&V Date (YYYY-MM-DD)	2006.07.14
V&V Edition	1
V&V Disposition and Status	OK
V&V Charge Time	8.46079996

### A.2 Comments