

V&V Reference Report

L2 ASCDS Version : 7.6.8

Observation 60632 - L2 Version 001
Chandra X-Ray Center

L2 Processing Date : Jul 14 2006

Contents

1	Front	2
2	OBI	3
2.1	OBI	3
2.1.1	Images	3
2.1.2	Bias	3
2.1.3	Parameters	4
2.1.4	Events	4
2.2	Compared Parameters	5
2.3	Aspect	6
2.4	Star Slots	8
2.5	FID Slots	8
A	Summary	9
A.1	Status	9
A.2	Comments	9

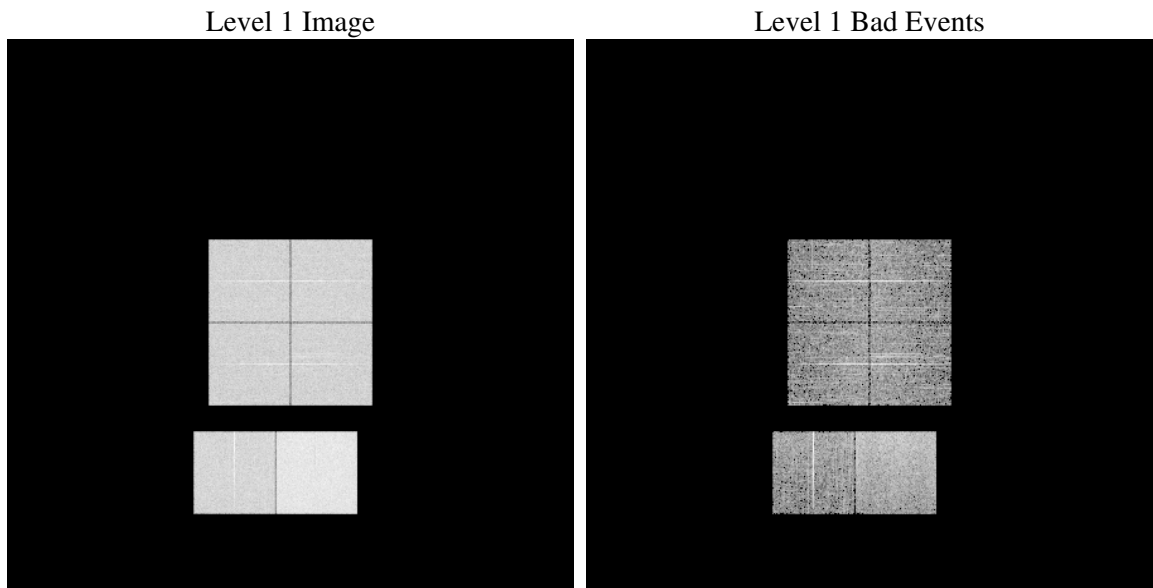
1 Front

seq_num	
obs_id	60632
title	ACIS-012367 diagnostics
observer	CHANDRA engineering request/realtime commanding
object	
dtcycle	0
cycle	P
ra_targ	0.0
dec_targ	0.0
ra_nom	260.80654819696
dec_nom	-48.030098352249
roll_nom	303.75686349738
revision	2
ontime	5846.3999782205
livetime	5772.3693414168
ontime0	3656.7273840606
ontime1	3747.5159097016
ontime2	3536.8934654593
ontime3	3578.8625556231
ontime6	3877.2368587852
ontime7	5846.3999782205
l2events	863630

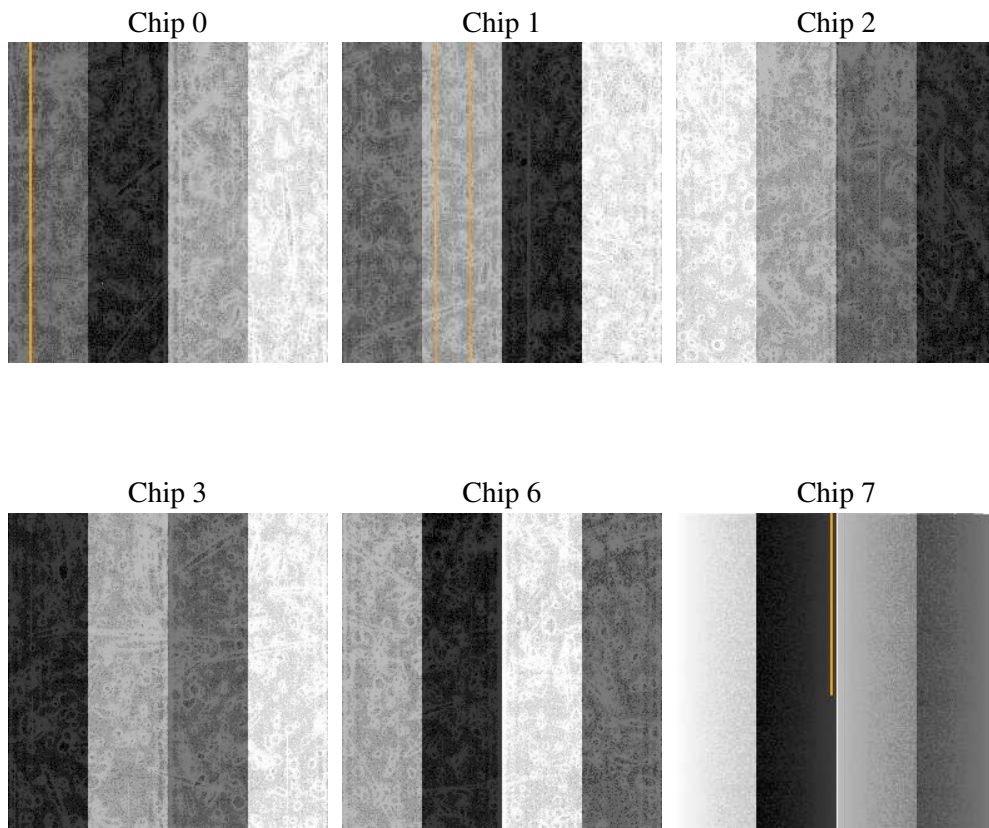
2 OBI

2.1 OBI

2.1.1 Images



2.1.2 Bias



2.1.3 Parameters

obi_num	0
ascdsver	7.6.8
caldbver	3.2.2
date	2006-07-14T18:44:44
revision	2

sched_exp_time	0.0
ontime	5850.0068792701
ontime0	3659.1117147505
ontime1	3749.8592003882
ontime2	3539.1957161427
ontime3	3581.3289663196
ontime6	3879.498069495
ontime7	5850.0068792701
l1events	1070903

2.1.4 Events

	ccd 0	ccd 1	ccd 2	ccd 3	ccd 6	ccd 7
level 1 events	159173	162136	155401	158181	175092	260920
rejected events	23659	23992	24031	25054	27030	42563
rejected %	14%	14%	15%	15%	15%	16%

	ccd 0	ccd 1	ccd 2	ccd 3	ccd 6	ccd 7
grade 0 events	74927	74336	74657	75943	77093	35235
	47%	45%	48%	48%	44%	13%
grade 1 events	364	296	394	384	311	97
	0%	0%	0%	0%	0%	0%
grade 2 events	23461	26490	21387	21895	29851	68840
	14%	16%	13%	13%	17%	26%
grade 3 events	8650	8358	8623	8395	8501	14899
	5%	5%	5%	5%	4%	5%
grade 4 events	8674	8337	8392	8437	8338	14480
	5%	5%	5%	5%	4%	5%
grade 5 events	1563	1555	1424	1544	1813	4981
	0%	0%	0%	0%	1%	1%
grade 6 events	19902	20749	18452	18588	24419	85033
	12%	12%	11%	11%	13%	32%
grade 7 events	21632	22015	22072	22995	24766	37355
	13%	13%	14%	14%	14%	14%

2.2 Compared Parameters

Parameter	Planned	Actual	Parameter	Planned	Actual
Instrument	ACIS	ACIS	Obspar format version number	6	6
Detector	ACIS-012367	ACIS-012367	Obspar file type	PREDICTED	ACTUAL
Grating	NONE	NONE	Obspar update status	NONE	UPDATED
Data mode	FAINT	FAINT	On-chip summing requested	N	N
Observation mode	SECONDARY	SECONDARY	Subarray requested	NONE	NONE
Pointing RA	0	260.8065481969575	Alternating exposures requested	N	N
Pointing Dec	0	-48.03009835224933	Primary exposure time	0.000000	3.2
Pointing Roll	0.0	303.7568634973792			
SIM focus pos (mm)	-0.782348	-0.6828225247311905			
SIM defocus (mm)	0	0.8505141146731063			
SIM translation stage pos (mm)	-233.592463	250.466033080201			
SIM translation stage offset (mm)	0	-0.01005468664627074			
Observation start time	175044665.971392	175044664.94671			
Observation start date	2003-07-19T23:31:06	2003-07-19T23:31:04			
Observation end time	175052232.521714	175052231.49703			
Observation end date	2003-07-20T01:37:13	2003-07-20T01:37:11			
Read mode	TIMED	TIMED			

2.3 Aspect

2.4 Star Slots

2.5 FID Slots

A Summary

A.1 Status

V&V Scientist	Beth Sundheim
V&V Date (YYYY-MM-DD)	2006.07.14
V&V Edition	1
V&V Disposition and Status	OK
V&V Charge Time	5.84639997

A.2 Comments

Focal plane temperature is warmer than -118 degrees throughout observation. The ACIS calibrations are not verified or necessarily applicable for focal plane temperatures warmer than -118 degrees.