

V&V Reference Report

L2 ASCDS Version : 7.6.8

Observation 60628 - L2 Version 001
Chandra X-Ray Center

L2 Processing Date : Jul 14 2006

Contents

1	Front	2
2	OBI	3
2.1	OBI	3
2.1.1	Images	3
2.1.2	Bias	3
2.1.3	Parameters	4
2.1.4	Events	4
2.2	Compared Parameters	5
2.3	Aspect	6
2.4	Star Slots	8
2.5	FID Slots	8
A	Summary	9
A.1	Status	9
A.2	Comments	9

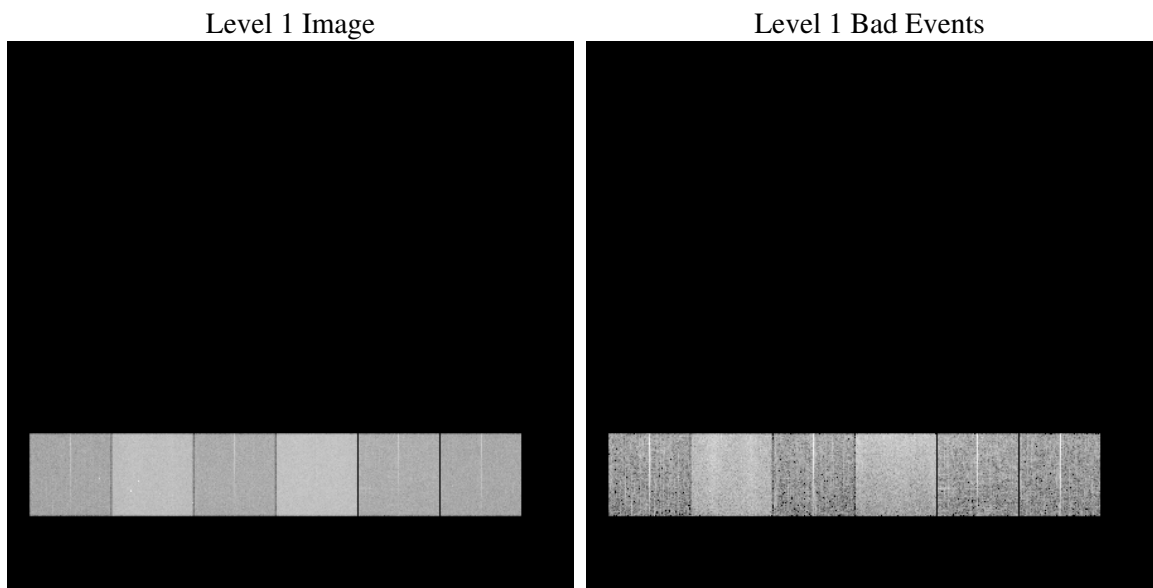
1 Front

seq_num	
obs_id	60628
title	ACIS-456789 diagnostics
observer	CHANDRA engineering request/realtime commanding
object	
dtcycle	0
cycle	P
ra_targ	0.0
dec_targ	0.0
ra_nom	267.83239469959
dec_nom	-41.214787660187
roll_nom	296.13189017538
revision	2
ontime	8456.9008525908
livetime	8349.814481861
ontime4	4237.2683978975
ontime5	8460.1828927696
ontime6	4655.3162195981
ontime7	8456.9008525908
ontime8	4694.2894638777
ontime9	4451.0104469955
l2events	1217134

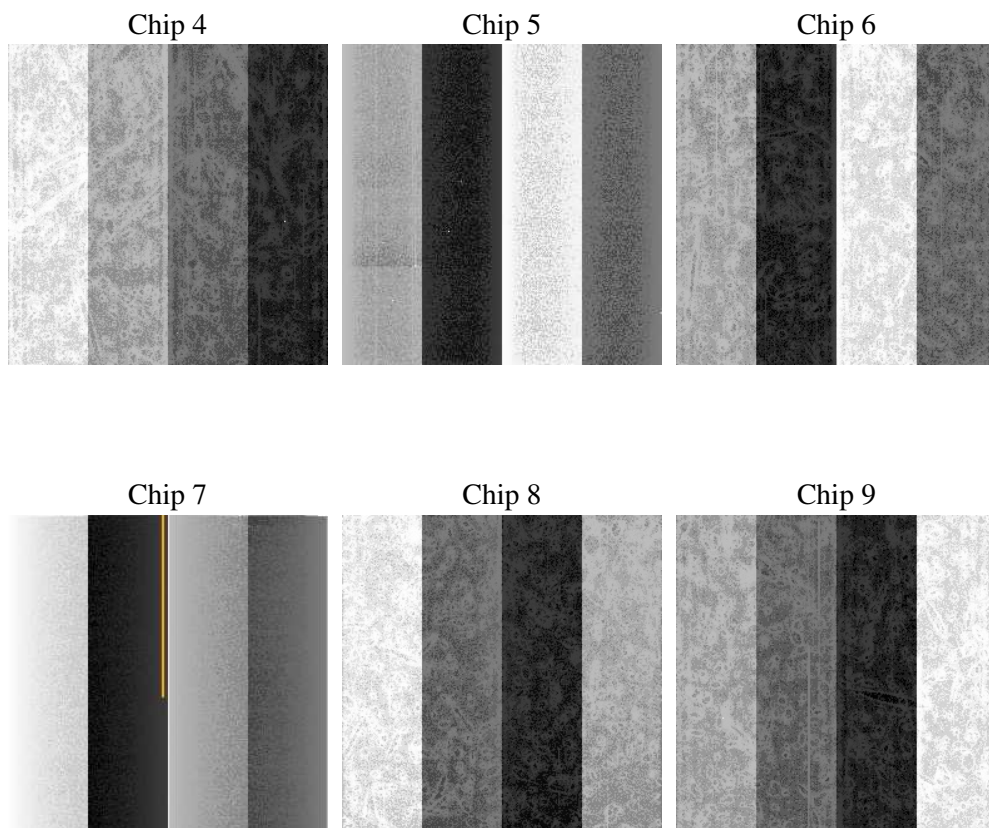
2 OBI

2.1 OBI

2.1.1 Images



2.1.2 Bias



2.1.3 Parameters

obi_num	0
ascdsver	7.6.8
caldsver	3.2.2
date	2006-07-14T19:57:51
revision	2

sched_exp_time	0.0
ontime	8459.0220704973
ontime4	4239.2664957941
ontime5	8462.2630706728
ontime6	4657.3553574979
ontime7	8459.0220704973
ontime8	4696.2465218008
ontime9	4453.1727049053
l1events	1537261

2.1.4 Events

	ccd 4	ccd 5	ccd 6	ccd 7	ccd 8	ccd 9
level 1 events	183131	346723	211745	378020	221073	196569
rejected events	32670	66616	32724	60245	36265	31102
rejected %	17%	19%	15%	15%	16%	15%

	ccd 4	ccd 5	ccd 6	ccd 7	ccd 8	ccd 9
grade 0 events	89584	26288	95010	52345	101864	92684
	48%	7%	44%	13%	46%	47%
grade 1 events	582	118	407	115	451	455
	0%	0%	0%	0%	0%	0%
grade 2 events	21804	133288	33916	99649	31878	27396
	11%	38%	16%	26%	14%	13%
grade 3 events	10045	8678	10699	22134	12023	10286
	5%	2%	5%	5%	5%	5%
grade 4 events	10079	7831	10590	21473	11778	10333
	5%	2%	5%	5%	5%	5%
grade 5 events	1919	6404	2221	7199	2457	2163
	1%	1%	1%	1%	1%	1%
grade 6 events	19053	104129	28932	122289	27395	24889
	10%	30%	13%	32%	12%	12%
grade 7 events	30065	59987	29970	52816	33227	28363
	16%	17%	14%	13%	15%	14%

2.2 Compared Parameters

Parameter	Planned	Actual	Parameter	Planned	Actual
Instrument	ACIS	ACIS	Obspar format version number	6	6
Detector	ACIS-456789	ACIS-456789	Obspar file type	PREDICTED	ACTUAL
Grating	NONE	NONE	Obspar update status	NONE	UPDATED
Data mode	FAINT	FAINT	On-chip summing requested	N	N
Observation mode	SECONDARY	SECONDARY	Subarray requested	NONE	NONE
Pointing RA	0	267.8323946995892	Alternating exposures requested	N	N
Pointing Dec	0	-41.21478766018738	Primary exposure time	0.000000	3.2
Pointing Roll	0.0	296.1318901753799			
SIM focus pos (mm)	-0.684267	-0.7809083437167272			
SIM defocus (mm)	0	0.7524282956875696			
SIM translation stage pos (mm)	-190.132523	250.466033080201			
SIM translation stage offset (mm)	0	-0.01005468664627074			
Observation start time	175257732.730511	175257731.70579			
Observation start date	2003-07-22T10:42:13	2003-07-22T10:42:11			
Observation end time	175281422.531522	175281421.5068			
Observation end date	2003-07-22T17:17:03	2003-07-22T17:17:01			
Read mode	TIMED	TIMED			

2.3 Aspect

2.4 Star Slots

2.5 FID Slots

A Summary

A.1 Status

V&V Scientist	Jen Lauer
V&V Date (YYYY-MM-DD)	2006.07.17
V&V Edition	1
V&V Disposition and Status	OK
V&V Charge Time	8.45690085

A.2 Comments

The ACIS focal plane temperature is above calibration limits for the entire observation.