

V&V Reference Report

L2 ASCDS Version : 7.6.11.10

Observation 60613 - L2 Version 3
Chandra X-Ray Center

L2 Processing Date : Feb 4 2009

Contents

1	Front	2
2	OBI	3
2.1	OBI	3
2.1.1	Images	3
2.1.2	Bias	3
2.1.3	Parameters	4
2.1.4	Events	4
2.2	Compared Parameters	5
2.3	Star Slots	6
2.4	FID Slots	6
A	Summary	7
A.1	Status	7
A.2	Comments	7

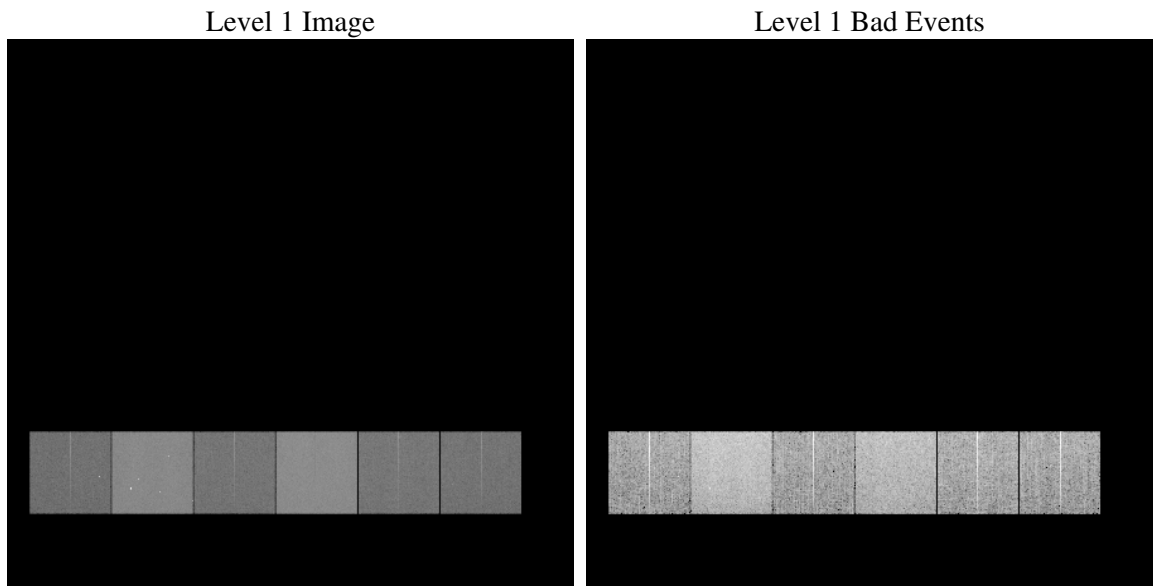
1 Front

seq_num	
obs_id	60613
title	ACIS-456789 diagnostics
observer	CHANDRA engineering request/realtime commanding
object	
dtcycle	0
cycle	P
ra_targ	0.0
dec_targ	0.0
ra_nom	269.75156385049
dec_nom	-31.603658308731
roll_nom	283.79912541325
revision	3
ontime	11974.399955392
livetime	11822.772893039
ontime4	5829.4919375777
ontime5	11974.399955392
ontime6	6250.8200584352
ontime7	11974.399955392
ontime8	6443.1042916775
ontime9	6216.0294476449
l2events	1771163

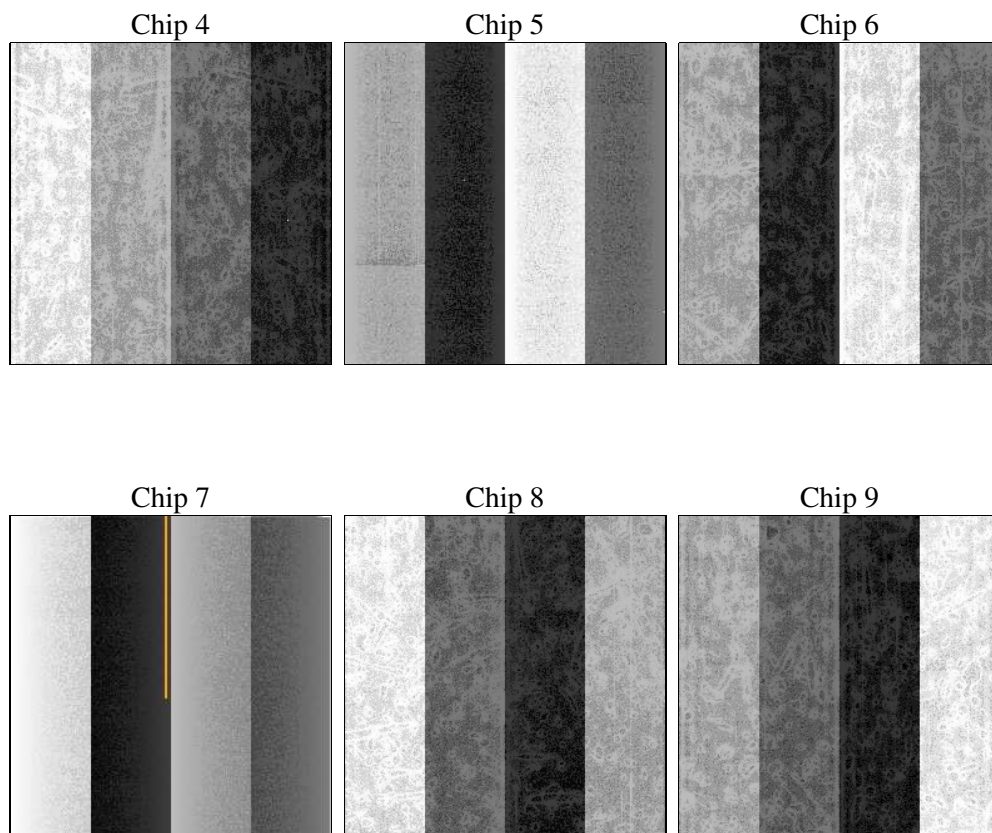
2 OBI

2.1 OBI

2.1.1 Images



2.1.2 Bias



2.1.3 Parameters

obi_num	1
ascdsver	7.6.11.10
caldbver	3.5.1
date	2009-02-04T17:04:29
revision	3

sched_exp_time	10200
ontime	11974.399955392
ontime4	5829.4919375777
ontime5	11974.399955392
ontime6	6250.8200584352
ontime7	11974.399955392
ontime8	6443.1042916775
ontime9	6216.0294476449
l1events	2205197

2.1.4 Events

	ccd 4	ccd 5	ccd 6	ccd 7	ccd 8	ccd 9
level 1 events	259511	507787	294317	550218	309416	283948
rejected events	44843	83732	45925	70868	51489	46950
rejected %	17%	16%	15%	12%	16%	16%

	ccd 4	ccd 5	ccd 6	ccd 7	ccd 8	ccd 9
grade 0 events	126543	101276	138157	123025	144344	132853
	48%	19%	46%	22%	46%	46%
grade 1 events	879	342	660	314	721	751
	0%	0%	0%	0%	0%	0%
grade 2 events	34905	156121	43526	108049	45424	41376
	13%	30%	14%	19%	14%	14%
grade 3 events	14620	26794	15684	49262	16682	15240
	5%	5%	5%	8%	5%	5%
grade 4 events	14609	26199	15553	49096	16826	15231
	5%	5%	5%	8%	5%	5%
grade 5 events	2749	12956	2877	11728	3602	3111
	1%	2%	0%	2%	1%	1%
grade 6 events	27861	121659	40027	158938	38577	36839
	10%	23%	13%	28%	12%	12%
grade 7 events	37345	62440	37833	49806	43240	38547
	14%	12%	12%	9%	13%	13%

2.2 Compared Parameters

Parameter	Planned	Actual
Instrument	ACIS	ACIS
Detector	ACIS-456789	ACIS-456789
Grating	NONE	NONE
Data mode	FAINT	FAINT
Observation mode	SECONDARY	SECONDARY
Pointing RA	269.7515638504851	269.7515638504851
Pointing Dec	-31.60365830873103	-31.60365830873103
Pointing Roll	283.799125413248	283.799125413248
SIM focus pos (mm)	-0.78090834371673	-0.78090834371673
SIM defocus (mm)	0.7524282194390134	0.7524282194390134
SIM translation stage pos (mm)	250.4660330802	250.4660330802
SIM translation stage offset (mm)	-0.01005726120527584	-0.01005726120527584
Observation start time	175673991.398278	175673991.398278
Observation start date	2003-07-27T06:33:00	2003-07-27T06:19:51
Observation end time	175687729.547255	175687729.547255
Observation end date	2003-07-27T09:23:00	2003-07-27T10:08:49
Read mode	TIMED	TIMED

Parameter	Planned	Actual
Obspar format version number	6	6
Obspar file type	PREDICTED	ACTUAL
Obspar update status	OVERRIDE	OVERRIDE
Number of optional ACIS chips dropped	0	0
On-chip summing requested	N	N
Subarray requested	NONE	NONE
Alternating exposures requested	N	N
Primary exposure time	3.2	3.2

2.3 Star Slots

2.4 FID Slots

A Summary

A.1 Status

V&V Scientist	Jen Lauer
V&V Date (YYYY-MM-DD)	2009.02.05
V&V Edition	1
V&V Disposition and Status	OK
V&V Charge Time	11.9743999

A.2 Comments

This obsid was reprocessed to correct minor errors in parameters used in processing. Some of these parameters cannot be determined automatically for this observation and were derived from spacecraft telemetry.