

V&V Reference Report

L2 ASCDS Version : 8.4.5

Observation 60608 - L2 Version 3
Chandra X-Ray Center

L2 Processing Date : Nov 2 2012

Contents

1	Front	2
2	OBI	3
2.1	OBI	3
2.1.1	Images	3
2.1.2	Bias	3
2.1.3	Parameters	4
2.1.4	Events	4
2.2	Compared Parameters	5
2.3	Star Slots	6
2.4	FID Slots	6
A	Summary	7
A.1	Status	7
A.2	Comments	7

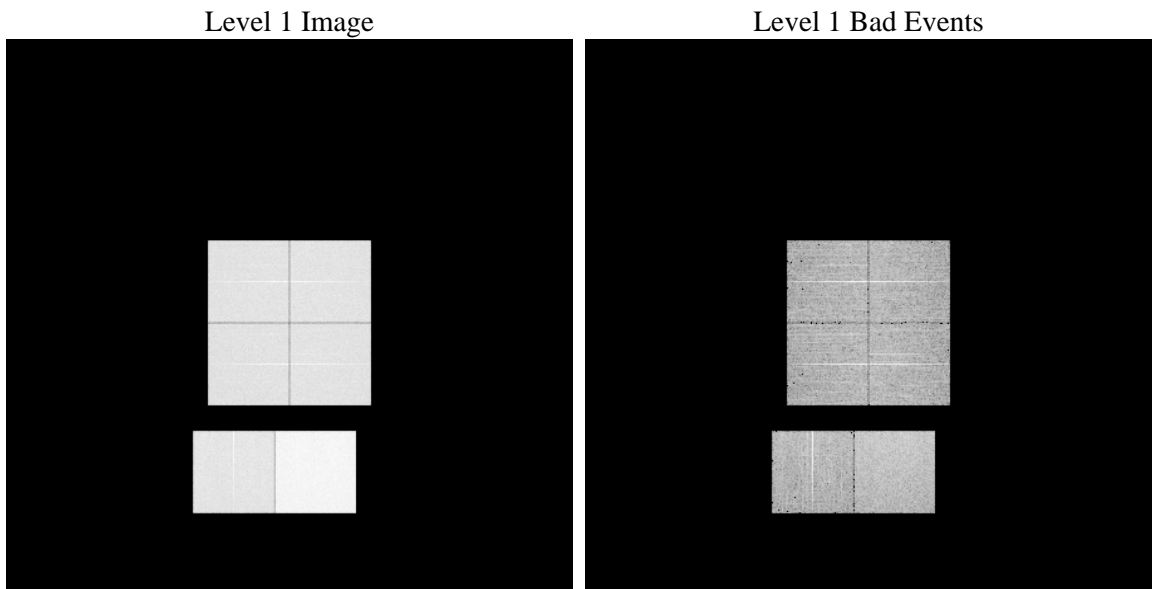
1 Front

seq_num	 	Sequence number
obs_id	60608	Observation id
title	ACIS-012367 diagnostics	Proposal title
observer	CHANDRA engineering request/realtime commanding	Principal investig
object	 	Source name
dtcycle	0	
cycle	P	events from which exps? Prim/Second/Both
ra_targ	0.0	Observer's specified target RA [deg]
dec_targ	0.0	Observer's specified target Dec [deg]
ra_nom	29.073489156131	Nominal RA [deg]
dec_nom	29.416901549225	Nominal Dec [deg]
roll_nom	110.97416010174	Nominal Roll [deg]
revision	3	Processing version of data
ontime	11811.199956	Sum of GTIs [s]
livetime	11661.639430306	Livetime [s]
ontime0	6393.4094333947	Sum of GTIs [s]
ontime1	6496.0088538229	Sum of GTIs [s]
ontime2	6113.5719128847	Sum of GTIs [s]
ontime3	6269.1397610009	Sum of GTIs [s]
ontime6	6609.4422640204	Sum of GTIs [s]
ontime7	11811.199956	Sum of GTIs [s]
l2events	1770961	Number of level 2 events

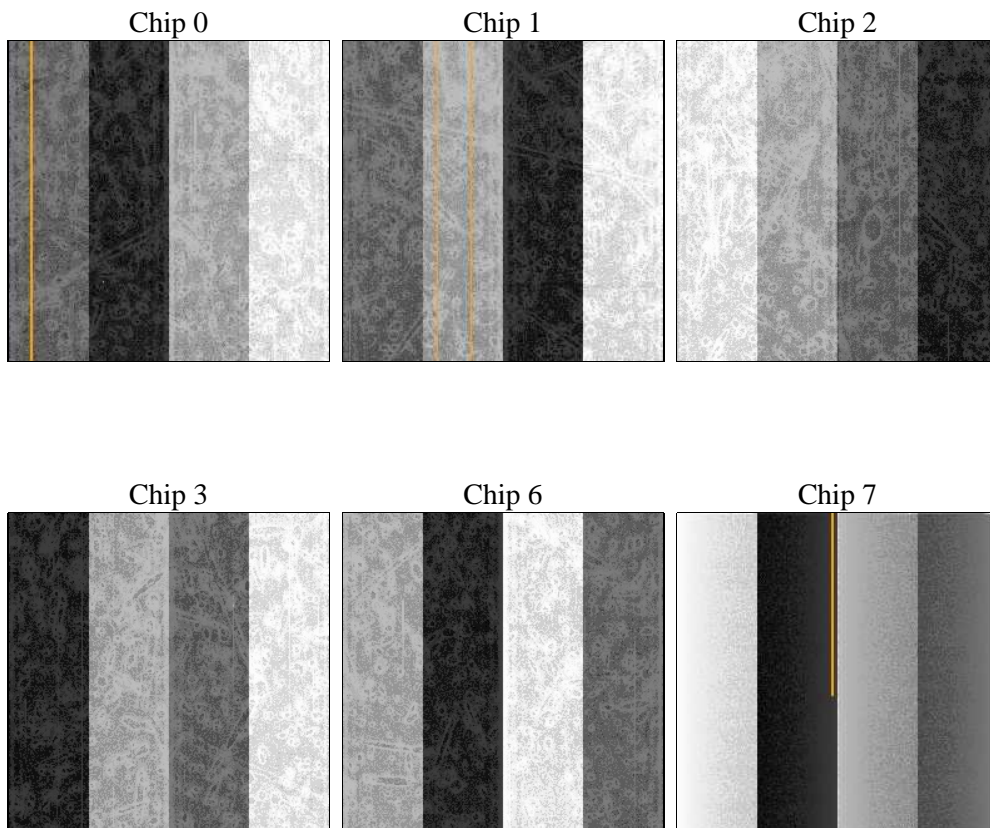
2 OBI

2.1 OBI

2.1.1 Images



2.1.2 Bias



2.1.3 Parameters

obi_num	0	Obi number	sched_exp_time	0.0	[s] Scheduled observation exposure time
ascdsver	8.4.5	Processing system revision	ontime	11811.199956	Sum of GTIs [s]
caldbver	4.5.2	 	ontime0	6393.4094333947	Sum of GTIs [s]
date	2012-11-01T23:55:59	Date and time of file creation	ontime1	6496.0088538229	Sum of GTIs [s]
revision	3	Processing version of data	ontime2	6113.5719128847	Sum of GTIs [s]
			ontime3	6269.1397610009	Sum of GTIs [s]
			ontime6	6609.4422640204	Sum of GTIs [s]
			ontime7	11811.199956	Sum of GTIs [s]
			l1events	2144870	Number of level 1 events

2.1.4 Events

	ccd 0	ccd 1	ccd 2	ccd 3	ccd 6	ccd 7		ccd 0	ccd 1	ccd 2	ccd 3	ccd 6	ccd 7
level 1 events	308647	312820	298713	308390	333981	582319	grade 0 events	144228	145748	141234	145833	153244	132596
rejected events	45049	44802	45049	46421	48343	63492		46%	46%	47%	47%	45%	22%
rejected %	14%	14%	15%	15%	14%	10%	grade 1 events	896	774	894	913	856	393
								0%	0%	0%	0%	0%	0%
							grade 2 events	45747	47608	42396	44313	48795	113573
								14%	15%	14%	14%	14%	19%
							grade 3 events	16760	16909	16221	16897	17484	51212
								5%	5%	5%	5%	5%	8%
							grade 4 events	16859	16728	16727	16900	17652	50370
								5%	5%	5%	5%	5%	8%
							grade 5 events	2924	3073	2746	3099	3346	11642
								0%	0%	0%	1%	1%	1%
							grade 6 events	40004	41025	37086	38026	48463	171076
								12%	13%	12%	12%	14%	29%
							grade 7 events	41229	40955	41409	42409	44141	51457
								13%	13%	13%	13%	13%	8%

2.2 Compared Parameters

Parameter	Planned	Actual	Parameter	Planned	Actual
Instrument	ACIS	ACIS	Obspar format version number	7	7
Detector	ACIS-012367	ACIS-012367	Obspar file type	PREDICTED	ACTUAL
Grating	NONE	NONE	Obspar update status	NONE	UPDATED
Data mode	FAINT	FAINT	On-chip summing requested	N	N
Observation mode	SECONDARY	SECONDARY	Subarray requested	NONE	NONE
[deg] Pointing RA	0	29.07348915613124	Alternating exposures requested	N	N
[deg] Pointing Dec	0	29.41690154922501	[s] Primary exposure time	0.000000	3.2
[deg] Pointing Roll	0.0	110.974160101741			
[mm] SIM focus pos	-0.782348	-1.523540733526241			
[mm] SIM defocus	0	0.009795905878055677			
[mm] SIM translation stage pos	-233.592463	250.4635187648994			
[mm] SIM translation stage offset	0	-0.007540371344731511			
[s] Observation start time (MET)	175902476.208004	175902475.18329			
Observation start date	2003-07-29T21:47:56	2003-07-29T21:47:55			
[s] Observation end time (MET)	175925903.609003	175925902.58428			
Observation end date	2003-07-30T04:18:24	2003-07-30T04:18:22			
Read mode	TIMED	TIMED			

2.3 Star Slots

2.4 FID Slots

A Summary

A.1 Status

V&V Scientist	Jen Lauer
V&V Date (YYYY-MM-DD)	2012.12.06
V&V Edition	1
V&V Disposition and Status	OK
V&V Charge Time	11.811199956

A.2 Comments