

V&V Reference Report

L2 ASCDS Version : 7.6.8

Observation 60592 - L2 Version 001
Chandra X-Ray Center

L2 Processing Date : Jul 11 2006

Contents

1	Front	2
2	OBI	3
2.1	OBI	3
2.1.1	Images	3
2.1.2	Bias	3
2.1.3	Parameters	4
2.1.4	Events	4
2.2	Compared Parameters	5
2.3	Aspect	6
2.4	Star Slots	8
2.5	FID Slots	8
A	Summary	9
A.1	Status	9
A.2	Comments	9

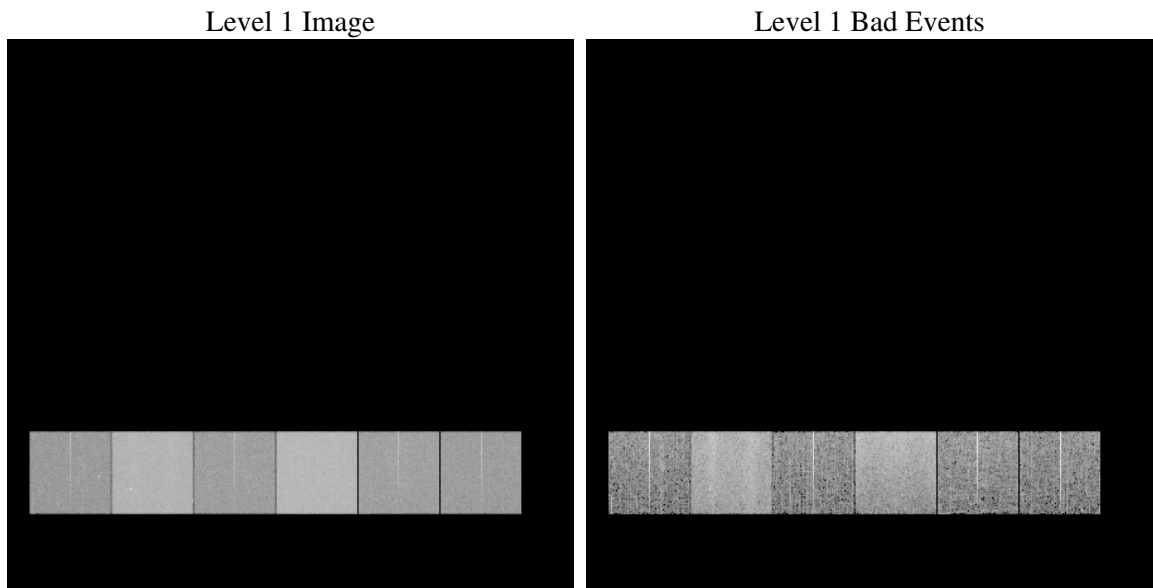
1 Front

seq_num	
obs_id	60592
title	ACIS-456789 diagnostics
observer	CHANDRA engineering request/realtime commanding
object	
dtcycle	0
cycle	P
ra_targ	0.0
dec_targ	0.0
ra_nom	12.976140819107
dec_nom	6.0159712526905
roll_nom	113.13330922693
revision	2
ontime	8453.9787926972
livetime	8346.9294228492
ontime4	4075.5392019153
ontime5	8450.7788624167
ontime6	4325.0563688576
ontime7	8453.9787926972
ontime8	4432.0904081464
ontime9	4240.6655811965
l2events	1219830

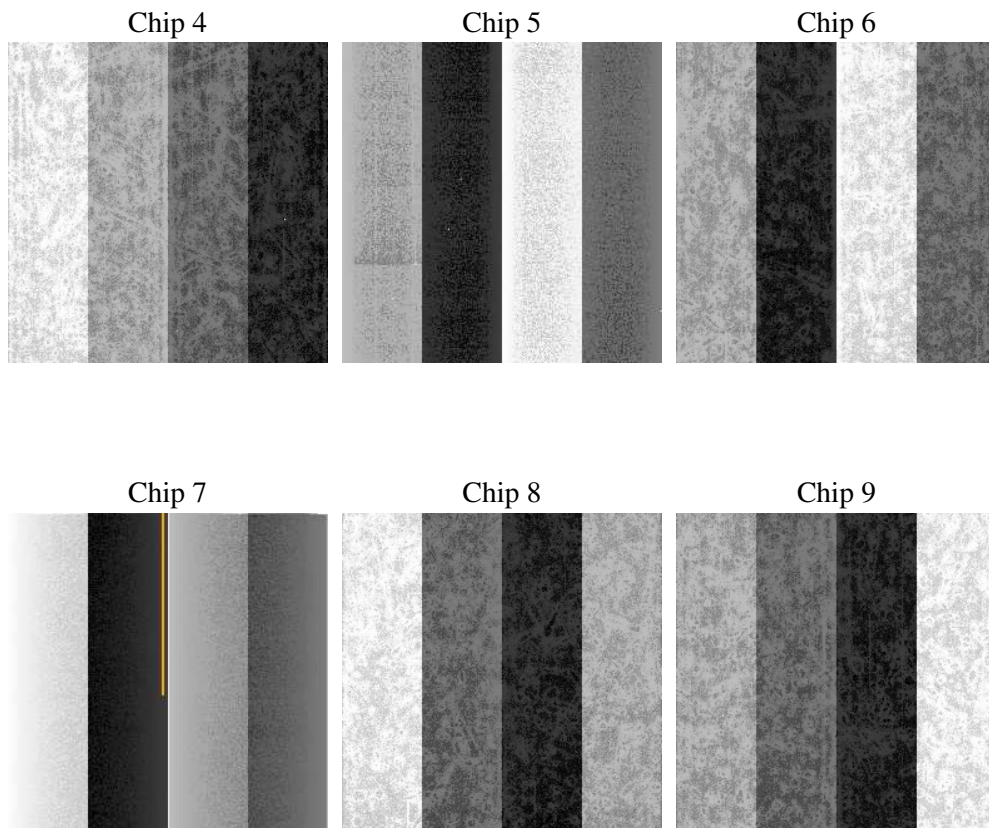
2 OBI

2.1 OBI

2.1.1 Images



2.1.2 Bias



2.1.3 Parameters

obi_num	0
ascdsver	7.6.8
caldsver	3.2.2
date	2006-07-11T11:27:50
revision	2

sched_exp_time	0.0
ontime	8455.7784211934
ontime4	4077.2157104015
ontime5	8452.5374509096
ontime6	4326.7739173472
ontime7	8455.7784211934
ontime8	4433.7258766592
ontime9	4242.506249696
l1events	1537429

2.1.4 Events

	ccd 4	ccd 5	ccd 6	ccd 7	ccd 8	ccd 9
level 1 events	182856	354187	203299	387102	215246	194739
rejected events	32019	67244	32587	60108	34770	31053
rejected %	17%	18%	16%	15%	16%	15%

	ccd 4	ccd 5	ccd 6	ccd 7	ccd 8	ccd 9
grade 0 events	89473	27123	90415	55334	98927	90781
	48%	7%	44%	14%	45%	46%
grade 1 events	644	115	347	120	455	471
	0%	0%	0%	0%	0%	0%
grade 2 events	21983	135183	32044	101864	31439	27307
	12%	38%	15%	26%	14%	14%
grade 3 events	10149	9082	10014	22748	11241	10222
	5%	2%	4%	5%	5%	5%
grade 4 events	10014	8247	10209	22278	11349	10259
	5%	2%	5%	5%	5%	5%
grade 5 events	1901	6482	2125	7148	2383	2095
	1%	1%	1%	1%	1%	1%
grade 6 events	19540	107416	28166	124907	27645	25228
	10%	30%	13%	32%	12%	12%
grade 7 events	29152	60539	29979	52703	31807	28376
	15%	17%	14%	13%	14%	14%

2.2 Compared Parameters

Parameter	Planned	Actual	Parameter	Planned	Actual
Instrument	ACIS	ACIS	Obspar format version number	6	6
Detector	ACIS-456789	ACIS-456789	Obspar file type	PREDICTED	ACTUAL
Grating	NONE	NONE	Obspar update status	NONE	UPDATED
Data mode	FAINT	FAINT	On-chip summing requested	N	N
Observation mode	SECONDARY	SECONDARY	Subarray requested	NONE	NONE
Pointing RA	0	12.97614081910702	Alternating exposures requested	N	N
Pointing Dec	0	6.015971252690543	Primary exposure time	0.000000	3.2
Pointing Roll	0.0	113.1333092269339			
SIM focus pos (mm)	-0.684267	-0.6828225247311905			
SIM defocus (mm)	0	0.8505141146731063			
SIM translation stage pos (mm)	-190.132523	250.466033080201			
SIM translation stage offset (mm)	0	-0.01005468664627074			
Observation start time	176861193.598916	176861192.57421			
Observation start date	2003-08-10T00:06:34	2003-08-10T00:06:32			
Observation end time	176883302.849861	176883301.82515			
Observation end date	2003-08-10T06:15:03	2003-08-10T06:15:01			
Read mode	TIMED	TIMED			

2.3 Aspect

2.4 Star Slots

2.5 FID Slots

A Summary

A.1 Status

V&V Scientist	Jen Lauer
V&V Date (YYYY-MM-DD)	2006.07.11
V&V Edition	1
V&V Disposition and Status	OK
V&V Charge Time	8.45397879

A.2 Comments

The ACIS focal plane temperature was above calibration limits for the entire observation, and decreased by two degrees during the course of the obsid.