

V&V Reference Report

L2 ASCDS Version : 7.6.8

Observation 60590 - L2 Version 001
Chandra X-Ray Center

L2 Processing Date : Jul 11 2006

Contents

1	Front	2
2	OBI	3
2.1	OBI	3
2.1.1	Images	3
2.1.2	Bias	3
2.1.3	Parameters	4
2.1.4	Events	4
2.2	Compared Parameters	5
2.3	Aspect	6
2.4	Star Slots	8
2.5	FID Slots	8
A	Summary	9
A.1	Status	9
A.2	Comments	9

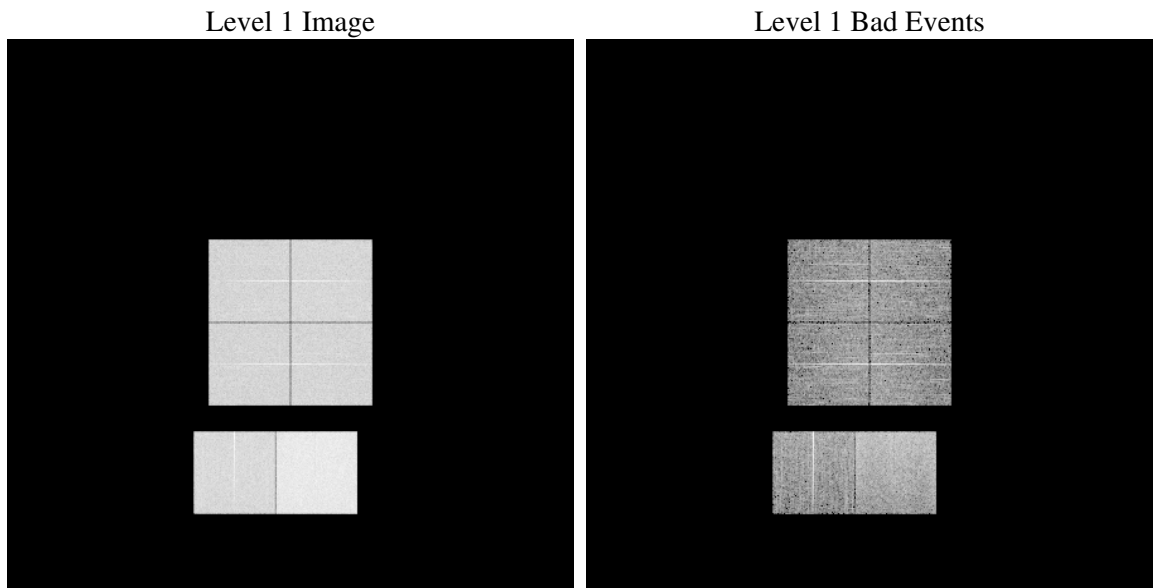
1 Front

seq_num	
obs_id	60590
title	ACIS-012367 diagnostics
observer	CHANDRA engineering request/realtime commanding
object	
dtcycle	0
cycle	P
ra_targ	0.0
dec_targ	0.0
ra_nom	343.17086096591
dec_nom	12.202696131346
roll_nom	141.65939072647
revision	2
ontime	8460.7999684811
livetime	8353.664224798
ontime0	5171.2101920247
ontime1	5414.2843191922
ontime2	5018.8838117719
ontime3	5073.9803467691
ontime6	5567.3161321878
ontime7	8460.7999684811
l2events	1241026

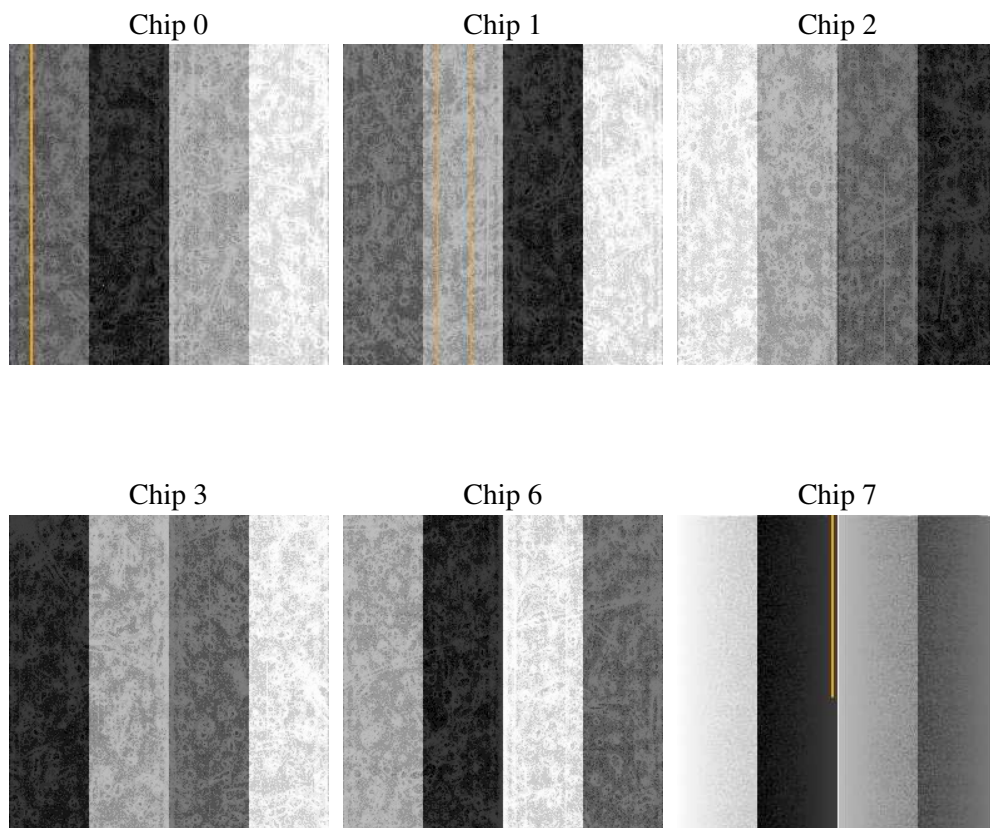
2 OBI

2.1 OBI

2.1.1 Images



2.1.2 Bias



2.1.3 Parameters

obi_num	0
ascdsver	7.6.8
caldbver	3.2.2
date	2006-07-11T12:00:22
revision	2

sched_exp_time	0.0
ontime	8462.2634314895
ontime0	5172.6736550331
ontime1	5415.7477822006
ontime2	5020.3472747803
ontime3	5075.4438097775
ontime6	5568.0740919411
ontime7	8462.2634314895
l1events	1538733

2.1.4 Events

	ccd 0	ccd 1	ccd 2	ccd 3	ccd 6	ccd 7
level 1 events	225511	235270	221502	225584	253346	377520
rejected events	34164	34535	34125	35460	39756	60625
rejected %	15%	14%	15%	15%	15%	16%

	ccd 0	ccd 1	ccd 2	ccd 3	ccd 6	ccd 7
grade 0 events	105969	108907	106387	107577	113831	52551
	46%	46%	48%	47%	44%	13%
grade 1 events	550	481	599	625	527	151
	0%	0%	0%	0%	0%	0%
grade 2 events	33206	37072	30246	31574	39268	98869
	14%	15%	13%	13%	15%	26%
grade 3 events	12152	12327	12124	12404	12762	21922
	5%	5%	5%	5%	5%	5%
grade 4 events	12137	12438	12062	12179	12656	21426
	5%	5%	5%	5%	4%	5%
grade 5 events	2269	2293	2138	2328	2607	7214
	1%	0%	0%	1%	1%	1%
grade 6 events	27883	29991	26558	26390	35073	122127
	12%	12%	11%	11%	13%	32%
grade 7 events	31345	31761	31388	32507	36622	53260
	13%	13%	14%	14%	14%	14%

2.2 Compared Parameters

Parameter	Planned	Actual	Parameter	Planned	Actual
Instrument	ACIS	ACIS	Obspar format version number	6	6
Detector	ACIS-012367	ACIS-012367	Obspar file type	PREDICTED	ACTUAL
Grating	NONE	NONE	Obspar update status	NONE	UPDATED
Data mode	FAINT	FAINT	On-chip summing requested	N	N
Observation mode	SECONDARY	SECONDARY	Subarray requested	NONE	NONE
Pointing RA	0	343.1708609659144	Alternating exposures requested	N	N
Pointing Dec	0	12.20269613134558	Primary exposure time	0.000000	3.2
Pointing Roll	0.0	141.6593907264676			
SIM focus pos (mm)	-0.782348	-0.6828225247311905			
SIM defocus (mm)	0	0.8505141146731063			
SIM translation stage pos (mm)	-233.592463	250.466033080201			
SIM translation stage offset (mm)	0	-0.01005468664627074			
Observation start time	177085566.108512	177085565.08379			
Observation start date	2003-08-12T14:26:06	2003-08-12T14:26:05			
Observation end time	177107730.70946	177107729.68474			
Observation end date	2003-08-12T20:35:31	2003-08-12T20:35:29			
Read mode	TIMED	TIMED			

2.3 Aspect

2.4 Star Slots

2.5 FID Slots

A Summary

A.1 Status

V&V Scientist	Jen Lauer
V&V Date (YYYY-MM-DD)	2006.07.11
V&V Edition	1
V&V Disposition and Status	OK
V&V Charge Time	8.46079996

A.2 Comments

The ACIS focal plane temperature was above calibration limits for the entire observation.