

V&V Reference Report

L2 ASCDS Version : 7.6.8

Observation 60586 - L2 Version 001
Chandra X-Ray Center

L2 Processing Date : Jul 11 2006

Contents

1	Front	2
2	OBI	3
2.1	OBI	3
2.1.1	Images	3
2.1.2	Bias	3
2.1.3	Parameters	4
2.1.4	Events	4
2.2	Compared Parameters	5
2.3	Aspect	6
2.4	Star Slots	8
2.5	FID Slots	8
A	Summary	9
A.1	Status	9
A.2	Comments	9

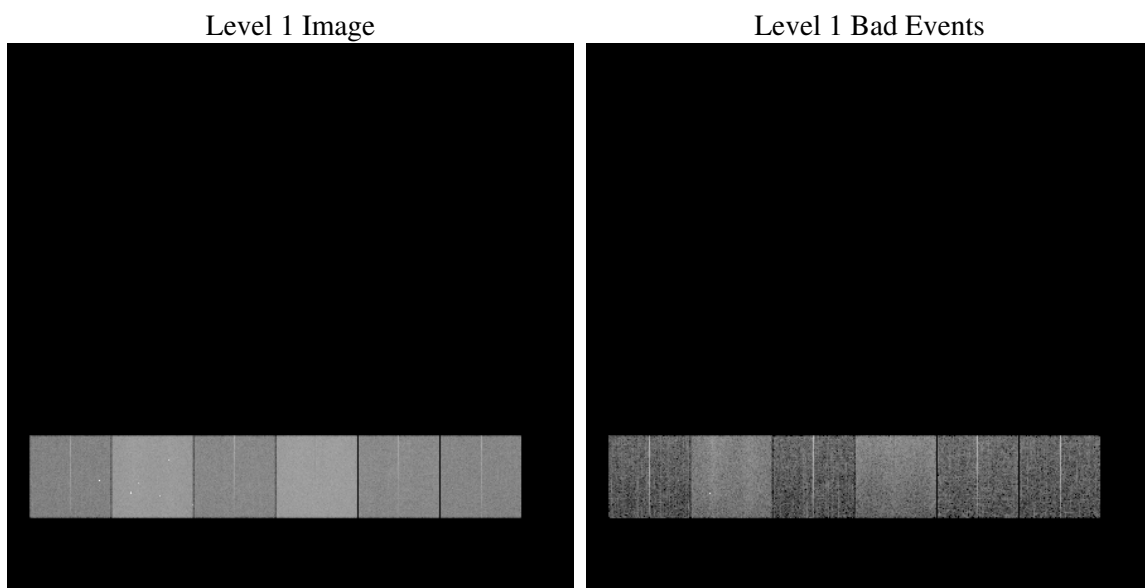
1 Front

seq_num	
obs_id	60586
title	ACIS-456789 diagnostics
observer	CHANDRA engineering request/realtime commanding
object	
dtcycle	0
cycle	P
ra_targ	0.0
dec_targ	0.0
ra_nom	343.17078966347
dec_nom	12.20143062543
roll_nom	144.26542874507
revision	2
ontime	8453.7618682981
livetime	8346.7152452774
ontime4	4221.1657706797
ontime5	8457.0439084768
ontime6	4632.731123507
ontime7	8453.7618682981
ontime8	4717.0781210363
ontime9	4486.7634336054
l2events	1213380

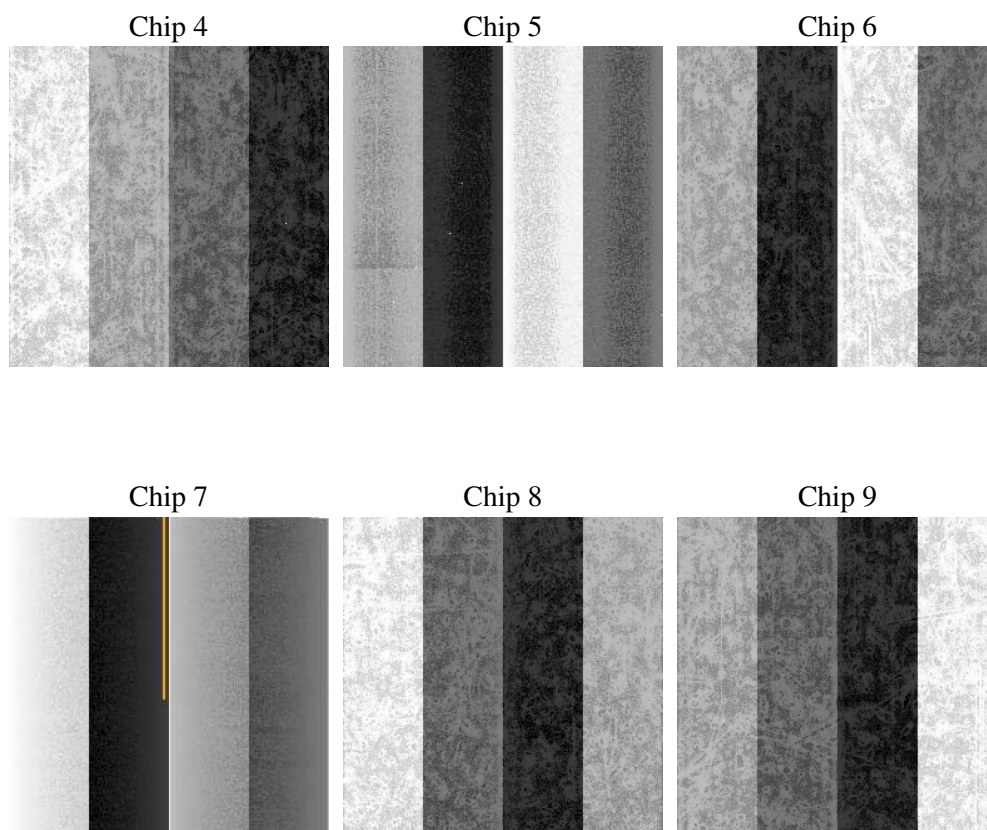
2 OBI

2.1 OBI

2.1.1 Images



2.1.2 Bias



2.1.3 Parameters

obi_num	0
ascdsver	7.6.8
caldsver	3.2.2
date	2006-07-11T13:23:28
revision	2

sched_exp_time	0.0
ontime	8455.7811213732
ontime4	4223.0619037449
ontime5	8459.0221215487
ontime6	4634.6682965755
ontime7	8455.7811213732
ontime8	4718.933214128
ontime9	4488.8237266839
l1events	1536223

2.1.4 Events

	ccd 4	ccd 5	ccd 6	ccd 7	ccd 8	ccd 9
level 1 events	182741	347672	211434	374870	221183	198323
rejected events	32101	67001	32409	60497	36353	31667
rejected %	17%	19%	15%	16%	16%	15%

	ccd 4	ccd 5	ccd 6	ccd 7	ccd 8	ccd 9
grade 0 events	90307	27325	96159	52296	102455	93193
	49%	7%	45%	13%	46%	46%
grade 1 events	636	116	425	120	464	454
	0%	0%	0%	0%	0%	0%
grade 2 events	21878	133354	32899	98396	31869	28187
	11%	38%	15%	26%	14%	14%
grade 3 events	9957	8424	10729	21744	11532	10398
	5%	2%	5%	5%	5%	5%
grade 4 events	9656	7920	10526	21093	11582	10423
	5%	2%	4%	5%	5%	5%
grade 5 events	1916	6475	2142	7238	2537	2224
	1%	1%	1%	1%	1%	1%
grade 6 events	18966	103756	28876	120958	27530	24584
	10%	29%	13%	32%	12%	12%
grade 7 events	29425	60302	29678	53025	33214	28860
	16%	17%	14%	14%	15%	14%

2.2 Compared Parameters

Parameter	Planned	Actual	Parameter	Planned	Actual
Instrument	ACIS	ACIS	Obspar format version number	6	6
Detector	ACIS-456789	ACIS-456789	Obspar file type	PREDICTED	ACTUAL
Grating	NONE	NONE	Obspar update status	NONE	UPDATED
Data mode	FAINT	FAINT	On-chip summing requested	N	N
Observation mode	SECONDARY	SECONDARY	Subarray requested	NONE	NONE
Pointing RA	0	343.17078966347	Alternating exposures requested	N	N
Pointing Dec	0	12.20143062542986	Primary exposure time	0.000000	3.2
Pointing Roll	0.0	144.2654287450719			
SIM focus pos (mm)	-0.684267	-0.6828225247311905			
SIM defocus (mm)	0	0.8505141146731063			
SIM translation stage pos (mm)	-190.132523	250.466033080201			
SIM translation stage offset (mm)	0	-0.01005468664627074			
Observation start time	177317480.568426	177317479.54371			
Observation start date	2003-08-15T06:51:21	2003-08-15T06:51:19			
Observation end time	177339466.819367	177339465.79465			
Observation end date	2003-08-15T12:57:47	2003-08-15T12:57:45			
Read mode	TIMED	TIMED			

2.3 Aspect

2.4 Star Slots

2.5 FID Slots

A Summary

A.1 Status

V&V Scientist	Jen Lauer
V&V Date (YYYY-MM-DD)	2006.07.11
V&V Edition	1
V&V Disposition and Status	OK
V&V Charge Time	8.45376186

A.2 Comments

The ACIS focal plane temperature was above calibration limits for the entire obsid and decreased by more than a degree over the course of the observation.