

# V&V Reference Report

## L2 ASCDS Version : 7.6.8

Observation 60578 - L2 Version 001  
Chandra X-Ray Center

L2 Processing Date : Jul 7 2006

## Contents

<b>1</b>	<b>Front</b>	<b>2</b>
<b>2</b>	<b>OBI</b>	<b>3</b>
2.1	OBI . . . . .	3
2.1.1	Images . . . . .	3
2.1.2	Bias . . . . .	3
2.1.3	Parameters . . . . .	4
2.1.4	Events . . . . .	4
2.2	Compared Parameters . . . . .	5
2.3	Aspect . . . . .	6
2.4	Star Slots . . . . .	8
2.5	FID Slots . . . . .	8
<b>A</b>	<b>Summary</b>	<b>9</b>
A.1	Status . . . . .	9
A.2	Comments . . . . .	9

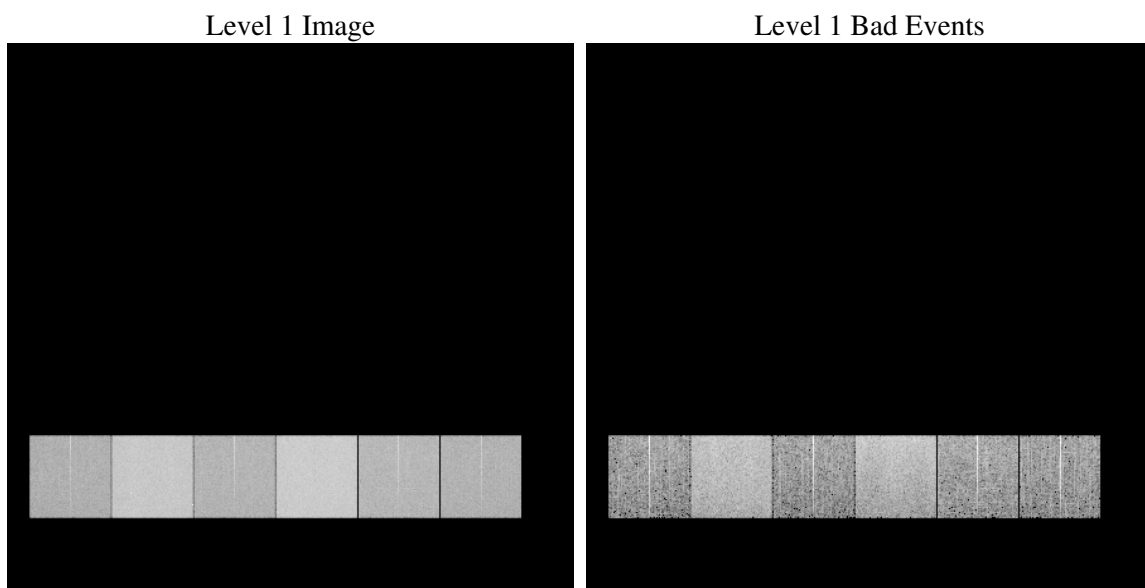
# 1 Front

seq_num	&#160
obs_id	60578
title	ACIS-456789 diagnostics
observer	CHANDRA engineering request/realtime commanding
object	&#160
dtcycle	0
cycle	P
ra_targ	0.0
dec_targ	0.0
ra_nom	353.98163594888
dec_nom	-9.9778377435172
roll_nom	96.295107075084
revision	2
ontime	8459.324056834
livetime	8352.2070020329
ontime4	4210.525639981
ontime5	8459.3650968373
ontime6	4541.0666055083
ontime7	8459.324056834
ontime8	4803.66883111
ontime9	4359.4476066828
l2events	1225070

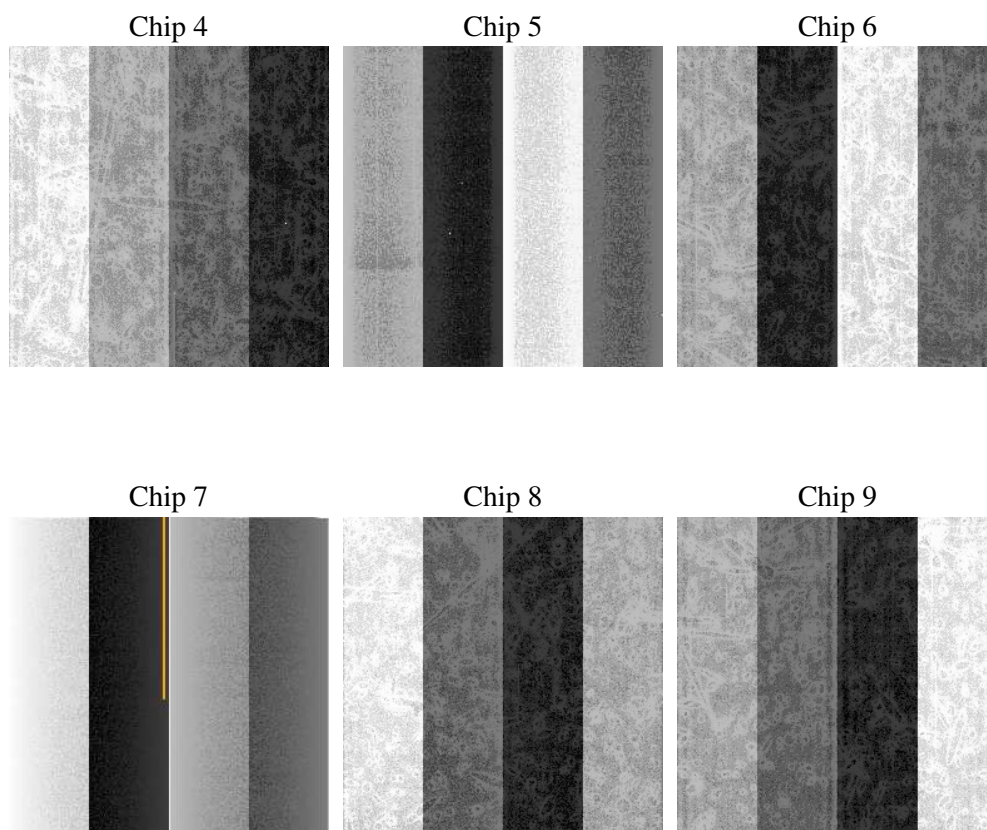
## 2 OBI

### 2.1 OBI

#### 2.1.1 Images



#### 2.1.2 Bias



### 2.1.3 Parameters

obi_num	0
ascdsver	7.6.8
caldbver	3.2.2
date	2006-07-08T02:01:46
revision	2

sched_exp_time	0.0
ontime	8462.2593418956
ontime4	4213.3378050327
ontime5	8462.2593418956
ontime6	4543.9198105633
ontime7	8462.2593418956
ontime8	4806.4399561882
ontime9	4362.4239317477
l1events	1537355

### 2.1.4 Events

	ccd 4	ccd 5	ccd 6	ccd 7	ccd 8	ccd 9
level 1 events	183810	345151	207974	379574	224960	195886
rejected events	31509	63086	30954	58511	35813	31744
rejected %	17%	18%	14%	15%	15%	16%

	ccd 4	ccd 5	ccd 6	ccd 7	ccd 8	ccd 9
grade 0 events	88785	29461	96593	56221	104085	90795
	48%	8%	46%	14%	46%	46%
grade 1 events	602	105	424	131	535	504
	0%	0%	0%	0%	0%	0%
grade 2 events	24004	135697	30625	98432	32888	28175
	13%	39%	14%	25%	14%	14%
grade 3 events	10147	8796	10905	23209	12340	10392
	5%	2%	5%	6%	5%	5%
grade 4 events	10007	8278	10882	22616	12057	10354
	5%	2%	5%	5%	5%	5%
grade 5 events	1922	6482	2177	7259	2600	2169
	1%	1%	1%	1%	1%	1%
grade 6 events	19497	99954	28166	120723	27934	24539
	10%	28%	13%	31%	12%	12%
grade 7 events	28846	56378	28202	50983	32521	28958
	15%	16%	13%	13%	14%	14%

## 2.2 Compared Parameters

Parameter	Planned	Actual	Parameter	Planned	Actual
Instrument	ACIS	ACIS	Obspar format version number	6	6
Detector	ACIS-456789	ACIS-456789	Obspar file type	PREDICTED	ACTUAL
Grating	NONE	NONE	Obspar update status	NONE	UPDATED
Data mode	FAINT	FAINT	On-chip summing requested	N	N
Observation mode	SECONDARY	SECONDARY	Subarray requested	NONE	NONE
Pointing RA	0	353.9816359488755	Alternating exposures requested	N	N
Pointing Dec	0	-9.977837743517197	Primary exposure time	0.000000	3.2
Pointing Roll	0.0	96.29510707508436			
SIM focus pos (mm)	-0.684267	-0.7809083437167272			
SIM defocus (mm)	0	0.7524282956875696			
SIM translation stage pos (mm)	-190.132523	250.466033080201			
SIM translation stage offset (mm)	0	-0.01005468664627074			
Observation start time	178002369.197724	178002368.173			
Observation start date	2003-08-23T05:06:09	2003-08-23T05:06:08			
Observation end time	178025419.398711	178025418.37399			
Observation end date	2003-08-23T11:30:19	2003-08-23T11:30:18			
Read mode	TIMED	TIMED			

## 2.3 Aspect



## **2.4 Star Slots**

## **2.5 FID Slots**



# A Summary

## A.1 Status

V&V Scientist	Jen Lauer
V&V Date (YYYY-MM-DD)	2006.07.10
V&V Edition	1
V&V Disposition and Status	OK
V&V Charge Time	8.45932405

## A.2 Comments

The ACIS focal plane temperature dropped by more than a degree during this observation.